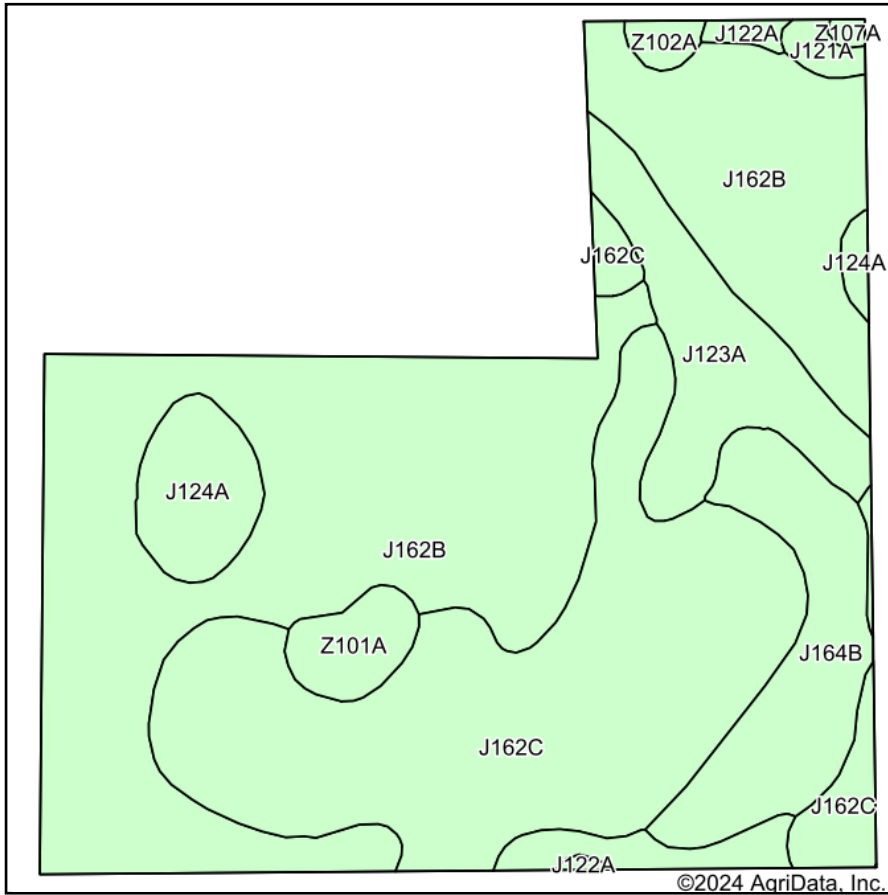
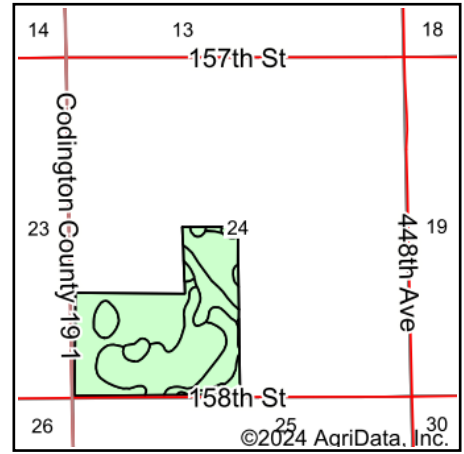


Soils Map



Soils data provided by USDA and NRCS.



State: **South Dakota**
 County: **Codington**
 Location: **24-119N-54W**
 Township: **Dexter**
 Acres: **113.1**
 Date: **12/27/2024**

ADVANTAGE
Land Co.

Maps Provided By:

 CUSTOMIZED ONLINE MAPPING
 © AgriData, Inc. 2023 www.AgriDataInc.com



Area Symbol: SD029, Soil Area Version: 28

Code	Soil Description	Acres	Percent of field	Non-Irr Class *c	Productivity Index
J162B	Poinsett-Buse-Waubay complex, 1 to 6 percent slopes	52.41	46.4%	Ile	81
J162C	Poinsett-Buse-Waubay complex, 2 to 9 percent slopes	34.34	30.4%	IIle	69
J164B	Poinsett-Waubay silty clay loams, 1 to 6 percent slopes	9.01	8.0%	Ile	89
J123A	Cubden-Badger silty clay loams, coteau, 0 to 2 percent slopes	8.31	7.3%	IIs	81
J124A	Cubden-Tonka silty clay loams, coteau, 0 to 2 percent slopes	4.58	4.0%	IIs	71
Z101A	Tonka silty clay loam, 0 to 1 percent slopes	2.28	2.0%	IVw	58
J121A	Colvin silty clay loam, till substratum, 0 to 1 percent slopes	0.72	0.6%	IVw	46
Z102A	Badger-Tonka silty clay loams, coteau, 0 to 1 percent slopes	0.68	0.6%	IIw	73
J122A	Cubden silty clay loam, 0 to 2 percent slopes	0.57	0.5%	IIs	77
Z107A	Parnell silty clay loam, coteau, 0 to 1 percent slopes	0.20	0.2%	Vw	32
Weighted Average				2.36	76.7

*c: Using Capabilities Class Dominant Condition Aggregation Method

Soils data provided by USDA and NRCS.