



REEDY
LAND CO.

South Pine Farms

Listing Summary

Parcel Overview

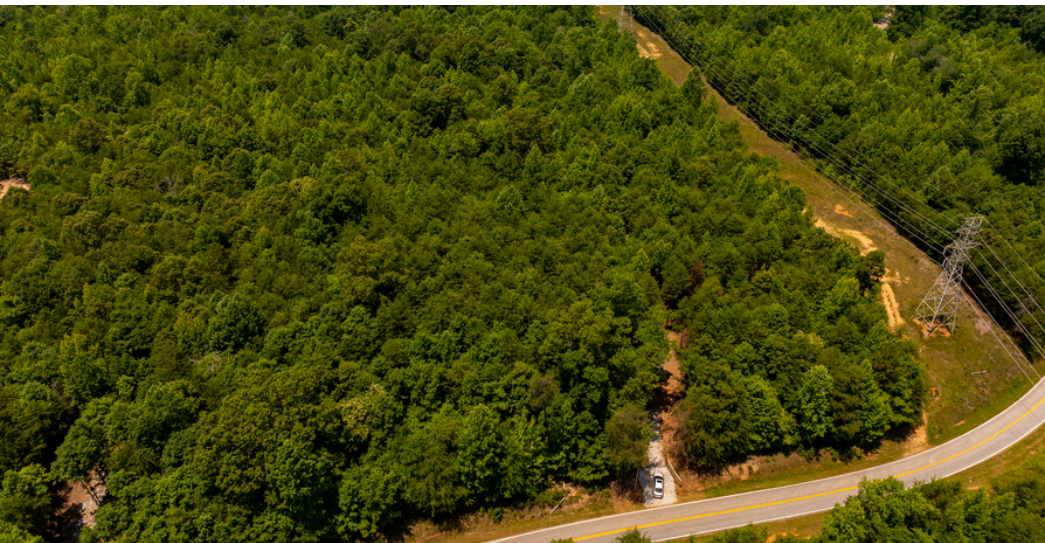
Goldmine Road | Spartanburg, SC

REEDY



Tract	Acreage	Price
13	±17.78	SOLD
16	±22.05	\$235k
17	±6.74	SOLD
18	±11.53	SOLD

Contact broker for lot availability



Property Summary

South Pine Farms provides a perfect canvas for a new homeowner to create their dream home on any of the lots available, each with varying sizes. The thriving community surrounding the property features local restaurants, breweries, public parks, organic farms, and traditional country churches. You can enjoy the modern-day amenities without sacrificing the tranquility of a rural lifestyle, just outside the city. Discover the perfect place to build your dream home on Goldmine Road.

Enjoy planting your roots in the peace and quiet with us at Reedy Land Co!

Property Details

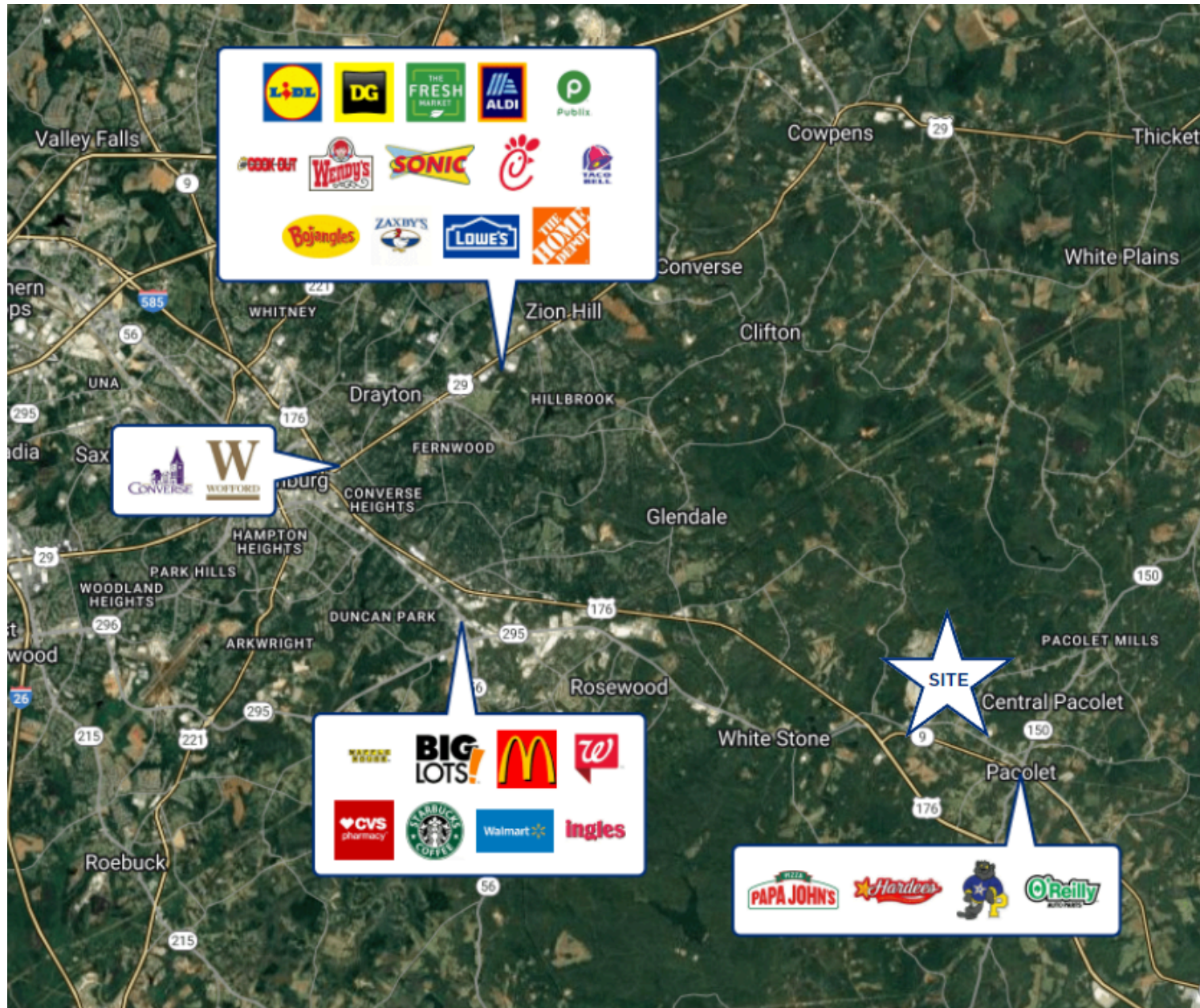
- **Spartanburg County TMS Numbers:**
 - 3-28-00-087.22
 - 3-28-00-087.19
 - 3-28-00-087.23 (SOLD)
 - 3-28-00-087.24
- **Zoning:** Unzoned
- **Schools:** Pacolet Elementary, Pacolet Middle, and Spartanburg High
- ±15 minutes to Downtown Spartanburg
- ±5 minutes to Pacolet Elementary
- ±10 minutes to Converse College
- **Property Features:** creek, gated entry, mature hardwoods
- ****Acreage and utility to be verified by Buyer and/or Buyer's Agent**



Municipality Map

South Pine Farms

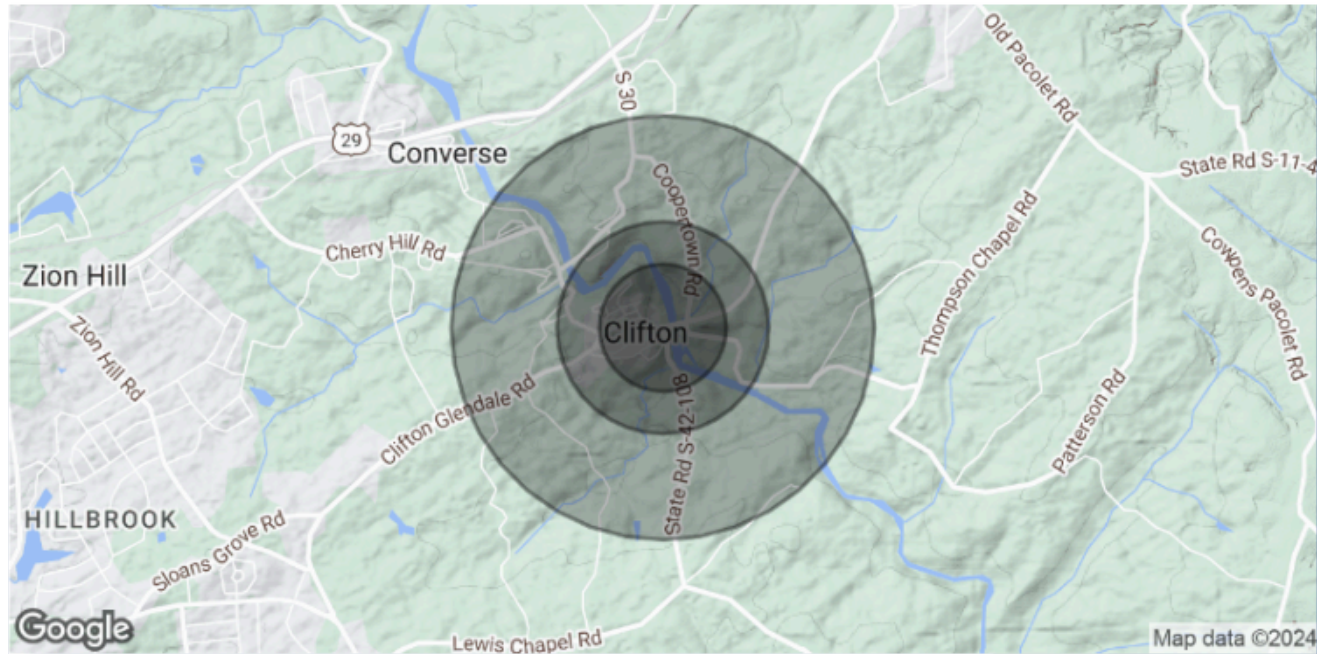
REEDY



Demographics

South Pine Farms

REEDY



POPULATION	0.3 MILES	0.5 MILES	1 MILE
Total Population	120	346	1,002
Average Age	42	42	43
Average Age (Male)	42	41	41
Average Age (Female)	43	44	44
HOUSEHOLDS & INCOME	0.3 MILES	0.5 MILES	1 MILE
Total Households	49	142	413
# of Persons per HH	2.4	2.4	2.4
Average HH Income	\$92,218	\$82,378	\$81,995
Average House Value	\$354,117	\$303,717	\$297,451

Demographics data derived from AlphaMap

Contact Information

Listing Team



Jacob Smith

P: 864-979-9844

E: jsmith@reedypg.com



Tyler Whims

P: 864-430-4507

E: twhims@reedypg.com