

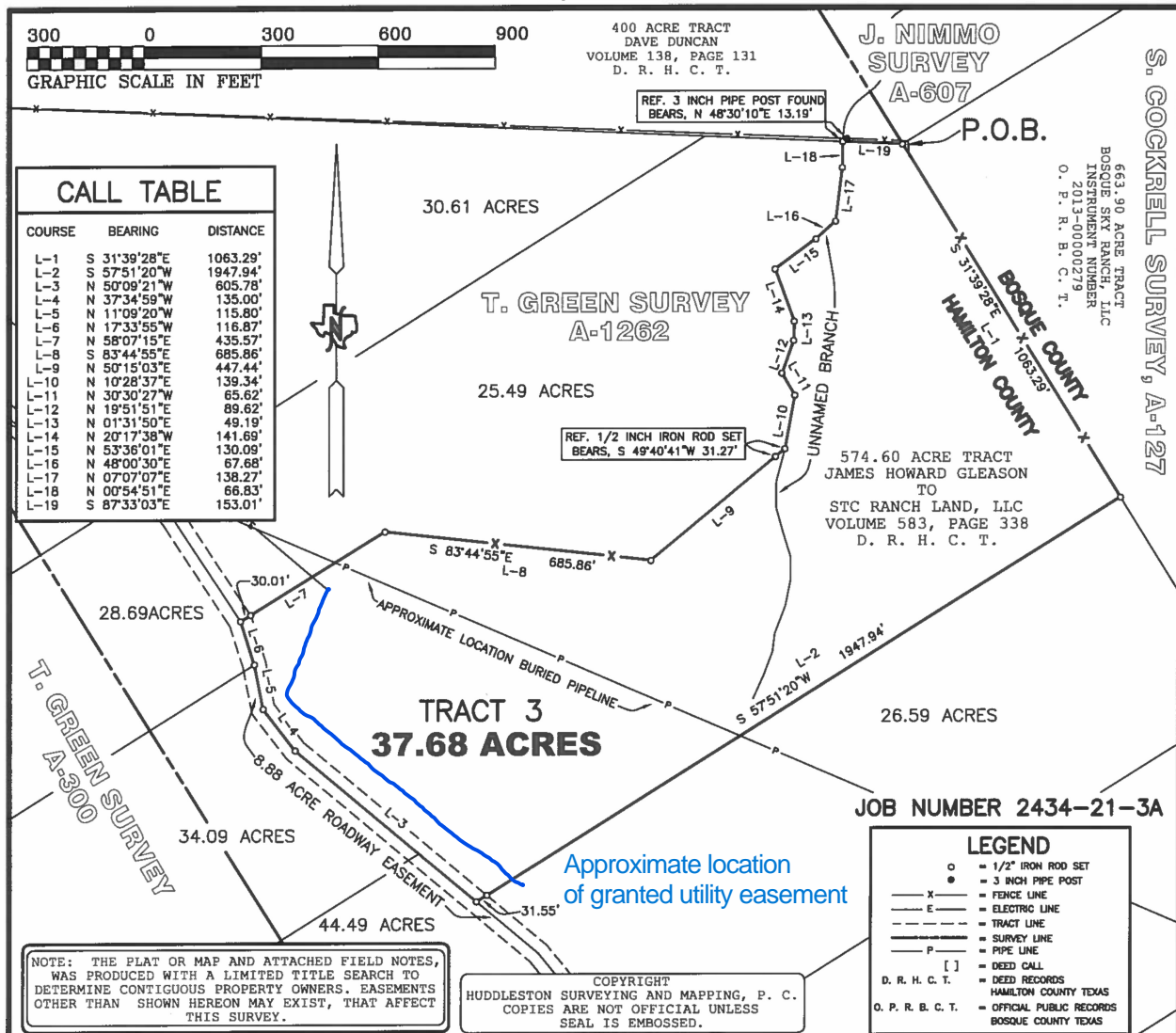
HUDDLESTON SURVEYING & MAPPING, P.C.

107 S. PAGE, PO BOX 39, COMANCHE, TEXAS 76442

325-356-2267 OFFICE, 325-356-2903 FAX

T. B. P. L. S. NUMBER 10033700

shsurveyor@verizon.net



THE STATE OF TEXAS:

COUNTY OF HAMILTON:

Being 37.68 acres of land, situated in Hamilton County, Texas, out of the T. GREEN SURVEY, ABSTRACT NUMBER 1262, and being out of a 574.60 acre tract of land that is described in a deed from James Howard Gleason to STC Ranch Land, LLC, recorded in Volume 583 at Page 338, Deed Records of Hamilton County, Texas, and further described as follows;

BEGINNING, at a 1/2 inch iron rod set at the Northeast corner of said 574.60 acre tract, and being the Southeast corner of a 400 acre tract of land that is described in a deed to Dave Duncan, recorded in Volume 138 at Page 131, said Deed Records, and the Northwest corner of a 663.90 acre tract of land that is described in a deed to Bosque Sky Ranch, LLC, recorded in Instrument Number 2013-00000279, Official Public Records of Bosque County, Texas, for the Northeast corner of this tract;

THENCE, S 31° 39' 28" E 1063.29 feet, part way with a fence, along the East line of said 574.60 acre tract and the West line of said 663.90 acre tract, to a 1/2 inch iron rod set, for the Southeast corner of this tract;

THENCE, S 57° 51' 20" W 1947.94 feet, to a spike set in the center of an 8.88 acre Roadway Easement, surveyed this day, for the Southwest corner of this tract;

THENCE, with the center of said Roadway Easement, as follows, N 50° 09' 21" W 605.78 feet, to a spike set, N 37° 34' 59" W 135.00 feet, to a spike set, N 11° 09' 20" W 115.80 feet, to a spike set, and N 17° 33' 55" W 116.87 feet, to a spike set, for the Northwest corner of this tract;

THENCE, N 58° 07' 15" E 435.57 feet, to a 1/2 inch iron rod set at a fence corner, S 83° 44' 55" E 685.86 feet, with a fence, to a 1/2 inch iron rod set, and N 50° 15' 03" E 447.44 feet, to a point in the approximate center of an unnamed branch, from which a reference 1/2 inch iron rod set bears, S 49° 40' 41" W 31.27 feet, for a corner of this tract;

THENCE, with the approximate center of said unnamed branch, as follows, N 10° 28' 37" E 139.34 feet, to a point, N 30° 30' 27" W 65.62 feet, to a point, N 19° 51' 51" E 89.62 feet, to a point, N 01° 31' 50" E 49.19 feet, to a point, N 20° 17' 38" W 141.69 feet, to a point, N 53° 36' 01" E 130.09 feet, to a point, N 48° 00' 30" E 67.68 feet, to a point, N 07° 07' 07" E 138.27 feet, to a point, and N 00° 54' 51" E 66.83 feet, to a point in the North line of said 574.60 acre tract and the South line of said 400 acre tract, from which a reference 3 inch pipe post bears, N 48° 30' 10" E 13.19 feet, for a corner of this tract;

THENCE, S 87° 33' 03" E 153.01 feet, with the North line of said 574.60 acre tract and the South line of said 400 acre tract, to the point of beginning and containing 37.68 acres of land.

I, SCOTT HUDDLESTON, a Registered Professional Land Surveyor in the State of Texas, do hereby certify that the foregoing Field Notes and Plat, was prepared from an actual survey, made on the ground, on June 2, 2021, from the Deed Records of Hamilton County, Texas, and the Official Public Records of Bosque County, Texas, surveys of area properties, that the corners and boundaries with marks natural and artificial are just as were found on the ground. Bearings are based on True North as determined by GPS survey data (NAD 83).

WITNESS MY HAND AND SEAL THIS THE 15th DAY OF JUNE, 2021.

Scott Huddleston
SCOTT HUDDLESTON
REGISTERED PROFESSIONAL LAND SURVEYOR, NO. 6334 OF TEXAS.

