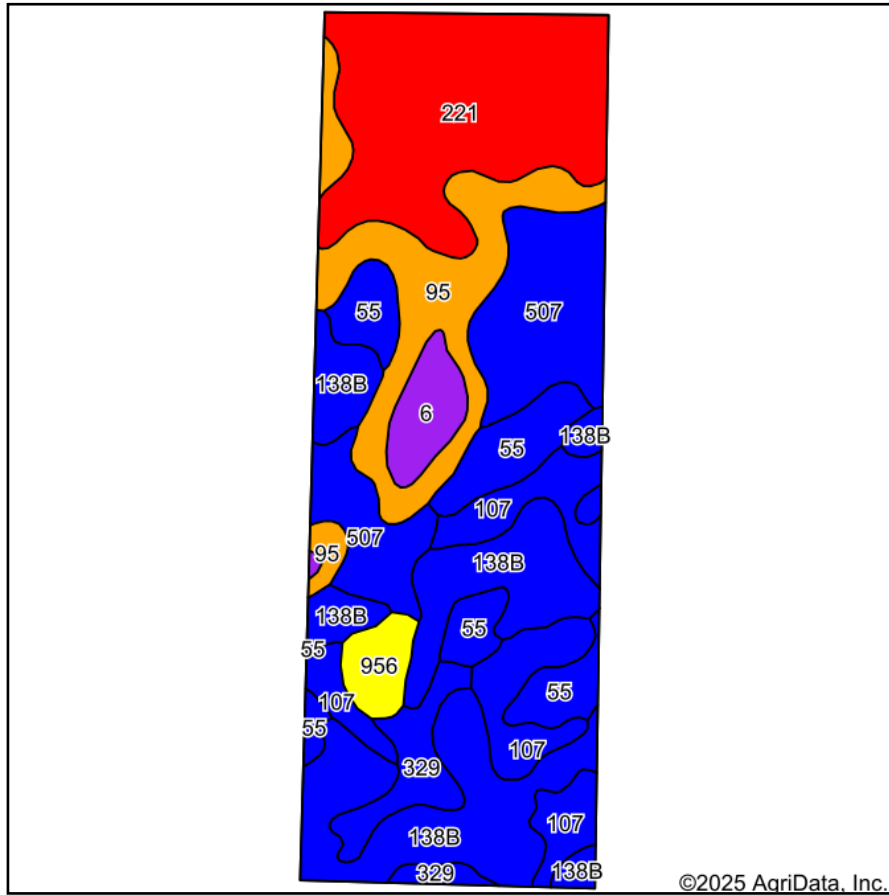
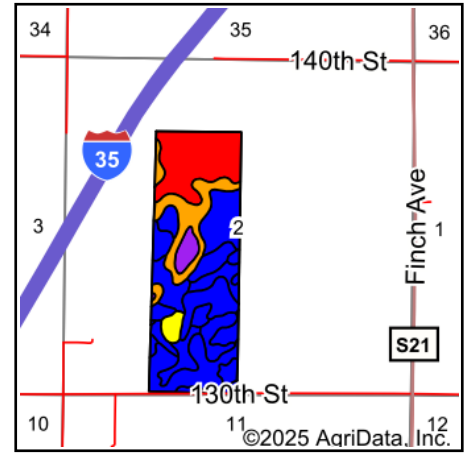


Soils Map



Soils data provided by USDA and NRCS.



State: **Iowa**
 County: **Franklin**
 Location: **2-91N-22W**
 Township: **Morgan**
 Acres: **120.27**
 Date: **2/20/2025**



Maps Provided By:

 CUSTOMIZED ONLINE MAPPING
 © AgriData, Inc. 2023 www.AgriDataInc.com



Area Symbol: IA069, Soil Area Version: 31

Code	Soil Description	Acres	Percent of field	CSR2 Legend	Non-Irr Class *c	CSR2**	CSR	*n NCCPI Overall	*n NCCPI Corn	*n NCCPI Small Grains	*n NCCPI Soybeans
138B	Clarion loam, 2 to 6 percent slopes	27.73	23.0%		Ile	89	82	83	78	72	83
221	Klossner muck, 0 to 1 percent slopes	24.90	20.7%		IIIw	32	44	84	78	79	84
507	Canisteo clay loam, 0 to 2 percent slopes	16.19	13.5%		IIw	84	79	81	71	69	81
95	Harps clay loam, 0 to 2 percent slopes	15.60	13.0%		IIw	72	63	82	70	68	82
107	Webster clay loam, 0 to 2 percent slopes	12.72	10.6%		IIw	86	84	83	78	71	82
55	Nicollet clay loam, 1 to 3 percent slopes	11.50	9.6%		Iw	89	89	81	81	74	81
329	Webster-Nicollet complex, 0 to 3 percent slopes	5.10	4.2%		IIw	87	86	82	79	73	81
6	Okoboji silty clay loam, 0 to 1 percent slopes	3.75	3.1%		IIIw	59	57	77	74	74	74
956	Harps-Okoboji complex, 0 to 2 percent slopes	2.78	2.3%		IIw	69	59	80	71	70	79
Weighted Average					2.14	72.5	71	*n 82.3	*n 76.1	*n 72.7	*n 82.1

**IA has updated the CSR values for each county to CSR2.

*n: The aggregation method is "Weighted Average using all components"

*c: Using Capabilities Class Dominant Condition Aggregation Method

Soils data provided by USDA and NRCS.