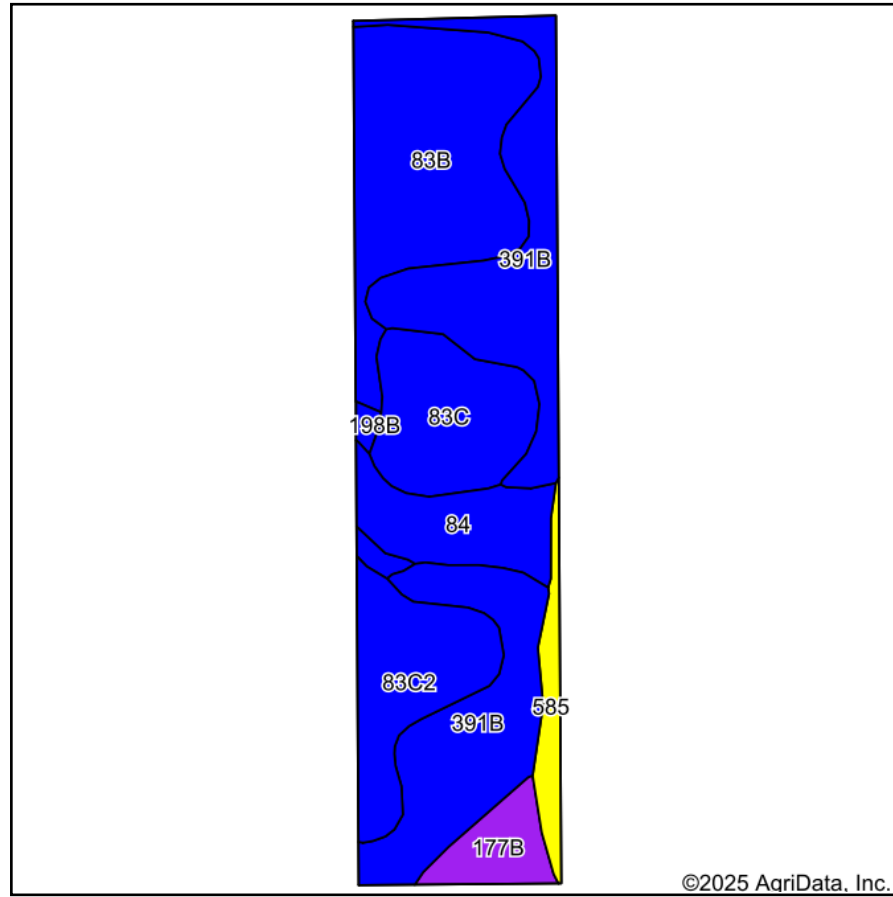
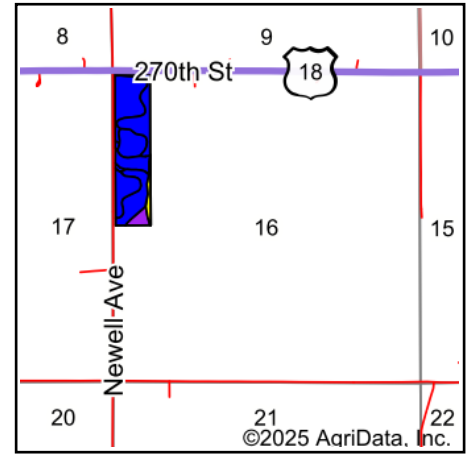


Soils Map



Soils data provided by USDA and NRCS.



State: **Iowa**
 County: **Chickasaw**
 Location: **16-94N-12W**
 Township: **Dresden**
 Acres: **35.89**
 Date: **3/26/2025**



Maps Provided By:



Area Symbol: IA037, Soil Area Version: 30

Code	Soil Description	Acres	Percent of field	CSR2 Legend	Non-Irr Class *c	*j Corn Bu	*i Soybeans Bu	CSR2**	CSR	Brome grass alfalfa AUM	Brome grass alfalfa hay Tons	Corn Bu	Kentucky bluegrass AUM	Oats Bu	Smooth brome grass AUM	S B
391B	Clyde-Floyd complex, 1 to 4 percent slopes	12.07	33.6%		Ilw	216.0	62.6	87	72							
83B	Kenyon loam, 2 to 5 percent slopes	8.64	24.1%		Ile	225.6	65.4	90	84							
83C	Kenyon loam, 5 to 9 percent slopes	4.42	12.3%		Ille	209.6	60.8	85	69	10.6	6.4	188	3.7	90.5	6.2	
83C2	Kenyon loam, 5 to 9 percent slopes, eroded	4.28	11.9%		Ille	204.8	59.4	84	67	10.6	6.3	212	3.7	88	6.2	
84	Clyde clay loam, 0 to 3 percent slopes	3.09	8.6%		Ilw	224.0	65.0	88	74							
177B	Saude loam, 2 to 5 percent slopes	1.64	4.6%		Ilis	80.0	23.2	55	57							

Soils data provided by USDA and NRCS.

Code	Soil Description	Acres	Percent of field	CSR2 Legend	Non-Irr Class *c	*i Corn Bu	*i Soybeans Bu	CSR2**	CSR	Bromegrass alfalfa AUM	Bromegrass alfalfa hay Tons	Corn Bu	Kentucky bluegrass AUM	Oats Bu	Smooth bromegrass AUM	S B
585	Coland-Spillville complex, 0 to 2 percent slopes, occasionally flooded	1.31	3.7%		Ilw	203.2	58.9	70	85							
198B	Floyd loam, 1 to 4 percent slopes	0.44	1.2%		Ilw	222.4	64.5	89	74							
Weighted Average					2.24	210.3	61	85.1	73.9	2.6	1.5	48.4	0.9	21.6	1.5	

**IA has updated the CSR values for each county to CSR2.

*i Yield data provided by the ISPAID Database version 8.1.1 developed by IA State University.

*n: The aggregation method is "Weighted Average using all components"

*c: Using Capabilities Class Dominant Condition Aggregation Method