



EL Dorado 725 +/- Acres

4433 Pat Thomas Parkway, Quincy, FL 3235

Sale Price: \$7,141,250.00



PROPERTY HIGHLIGHTS

- Own a piece of Florida's natural beauty with this exceptional 725-acre property, a rare gem that has been cherished by the same family since the early 1900's. Once a thriving shade leaf tobacco farm, this land carries a rich agriculture heritage while offering endless possibilities for its next chapter. More than just acreage, it's a legacy - blending history, recreation, and incredible potential.
- Expansive Acreage: 725 acres of diverse landscape, featuring various stages of timber growth, providing both immediate beauty and long-term investment potential.
- Water Features: A picturesque 3+/- acre pond, perfect for fishing and relaxation, with an adjoining site primed for a duck pond. Several creeks, including the tranquil Turkey Creek, meander through the property.
- Residential Comfort: A spacious 4,400 sq ft house provides ample living space, complemented by a 1,340 sq ft guest house, ideal for family and friends.
- Essential Infrastructure: An equipment barn ensures convenient storage for all your tools and machinery.
- Outdoor Paradise: Abundant wildlife, including deer and turkey, roam the property, while excellent quail habitat makes it a haven for hunters and nature enthusiasts.
- Prime Location: Situated just a short distance from I-10 in Quincy, Florida, offering convenient access to nearby amenities.
- Recreational Opportunities: Just minutes from boat landings on the renowned Lake Talquin, providing endless opportunities for fishing, boating, and water sports.

Clark Smith
850.510.6333
csmith@tlgproperty.com

TLG REAL ESTATE SERVICES

3520 Thomasville Road, Suite 200, Tallahassee, FL 32309

850.385.6363



El Dorado 725 +/- Acres

Executive Summary

4433 Pat Thomas Parkway, Quincy, FL 32351



OFFERING SUMMARY

Sale Price:	\$7,141,250
Lot Size:	725 +/- Acres
Price / Acre:	\$9,850
Zoning:	AG (Agriculture)

PROPERTY OVERVIEW

Family Legacy: A once-in-a-lifetime opportunity to own a property with a rich history, cherished by the same family for generations. 725+/- acres of pristine land ideal for recreational/homestead uses. The main house is 4,400 sq. ft., and guest house is 1,340 sq. ft.

ADDITIONAL HIGHLIGHTS

- Main House: 4 bedrooms/3 bathrooms; Guest House: 2 bedrooms/1 bathroom.
- 23 miles from Tallahassee International Airport.
- Rolling topography and virgin bottomlands. Multiple springs located throughout property.
- The guest house was originally a one room schoolhouse in Quincy (Miss Pinky Whites Academy) which the family moved out to the farm in 1980.

Clark Smith
850.510.6333
csmith@tlgproperty.com

TLG REAL ESTATE SERVICES
3520 Thomasville Road, Suite 200, Tallahassee, FL 32309
850.385.6363



El Dorado 725 +/- Acres

Structures - Shed, Pole Barn & Deer Blind

4433 Pat Thomas Parkway, Quincy, FL 32351



Clark Smith
850.510.6333
csmith@tlgproperty.com

TLG REAL ESTATE SERVICES
3520 Thomasville Road, Suite 200, Tallahassee, FL 32309
850.385.6363



El Dorado 725 +/- Acres

Landscape - Timber, Pond, Creek & Woods

4433 Pat Thomas Parkway, Quincy, FL 32351



Clark Smith
850.510.6333
csmith@tlgproperty.com

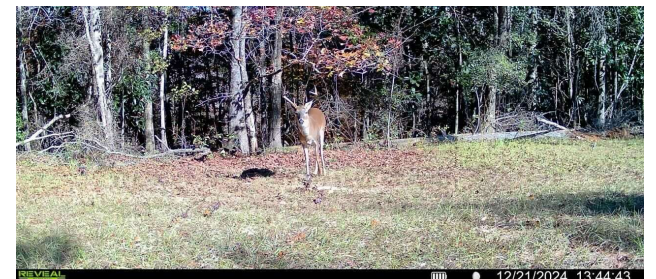
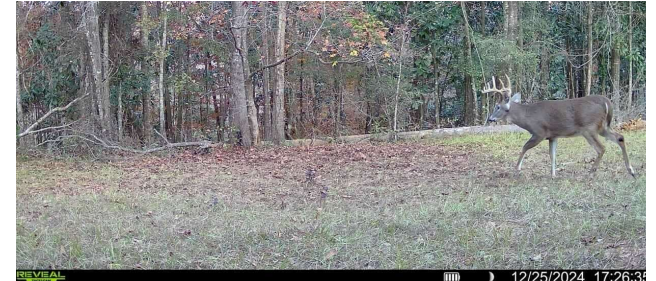
TLG REAL ESTATE SERVICES
3520 Thomasville Road, Suite 200, Tallahassee, FL 32309
850.385.6363



El Dorado 725 +/- Acres

Wildlife - Deer, Turkey & Quail

4433 Pat Thomas Parkway, Quincy, FL 32351



Clark Smith
850.510.6333
csmith@tlgproperty.com

TLG REAL ESTATE SERVICES
3520 Thomasville Road, Suite 200, Tallahassee, FL 32309
850.385.6363



El Dorado 725 +/- Acres

Main House

4433 Pat Thomas Parkway, Quincy, FL 32351



Clark Smith
850.510.6333
csmith@tlgproperty.com

TLG REAL ESTATE SERVICES
3520 Thomasville Road, Suite 200, Tallahassee, FL 32309
850.385.6363



El Dorado 725 +/- Acres

Main House Continued

4433 Pat Thomas Parkway, Quincy, FL 32351



Clark Smith
850.510.6333
csmith@tlgproperty.com

TLG REAL ESTATE SERVICES
3520 Thomasville Road, Suite 200, Tallahassee, FL 32309
850.385.6363



El Dorado 725 +/- Acres

Main House Continued

4433 Pat Thomas Parkway, Quincy, FL 32351



Clark Smith
850.510.6333
csmith@tlgproperty.com

TLG REAL ESTATE SERVICES
3520 Thomasville Road, Suite 200, Tallahassee, FL 32309
850.385.6363



El Dorado 725 +/- Acres

Guest House

4433 Pat Thomas Parkway, Quincy, FL 32351



Clark Smith
850.510.6333
csmith@tlgproperty.com

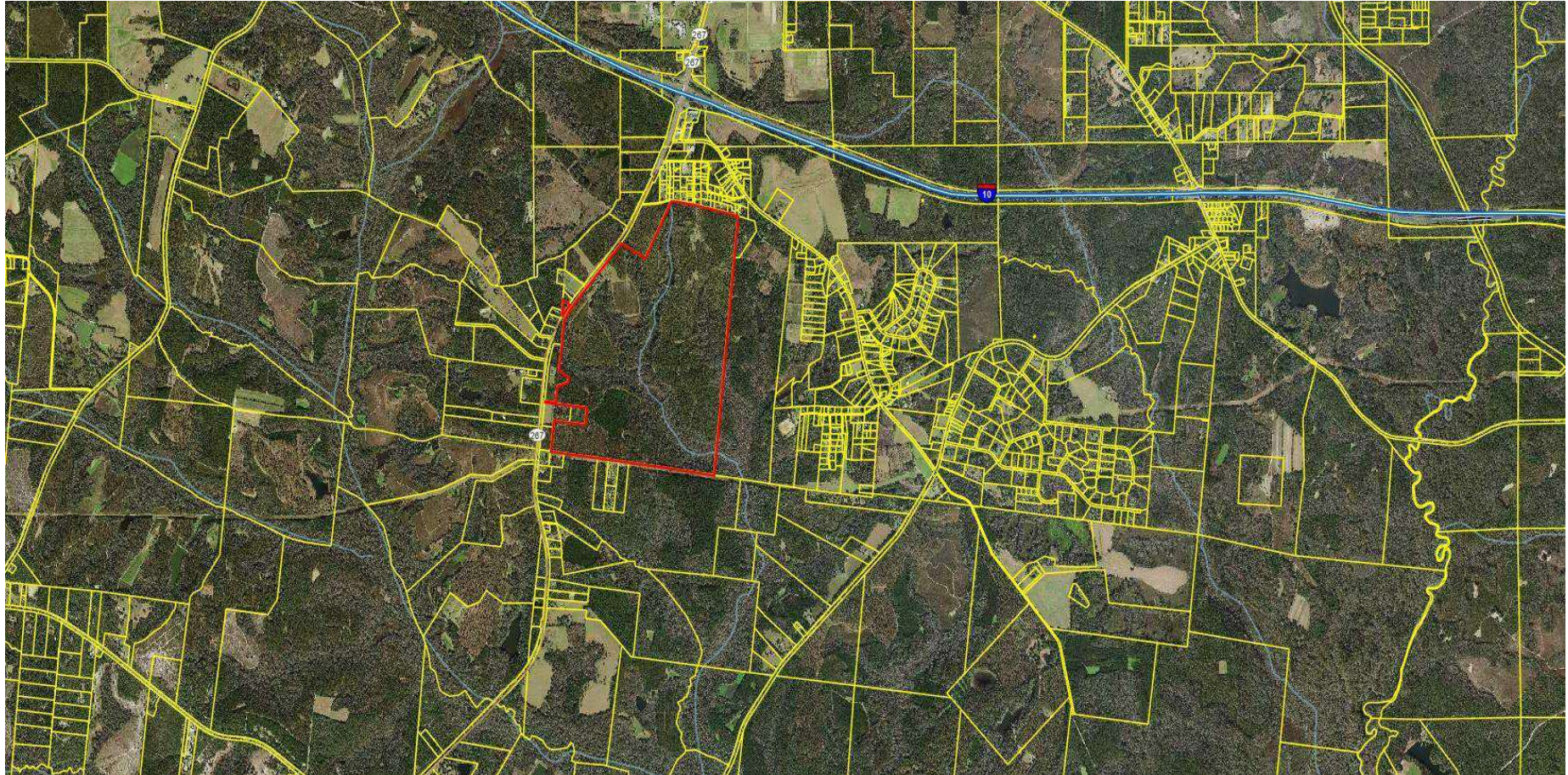
TLG REAL ESTATE SERVICES
3520 Thomasville Road, Suite 200, Tallahassee, FL 32309
850.385.6363



El Dorado 725 +/- Acres

Aerial/Parcel

4433 Pat Thomas Parkway, Quincy, FL 32351



Clark Smith
850.510.6333
csmith@tlgproperty.com

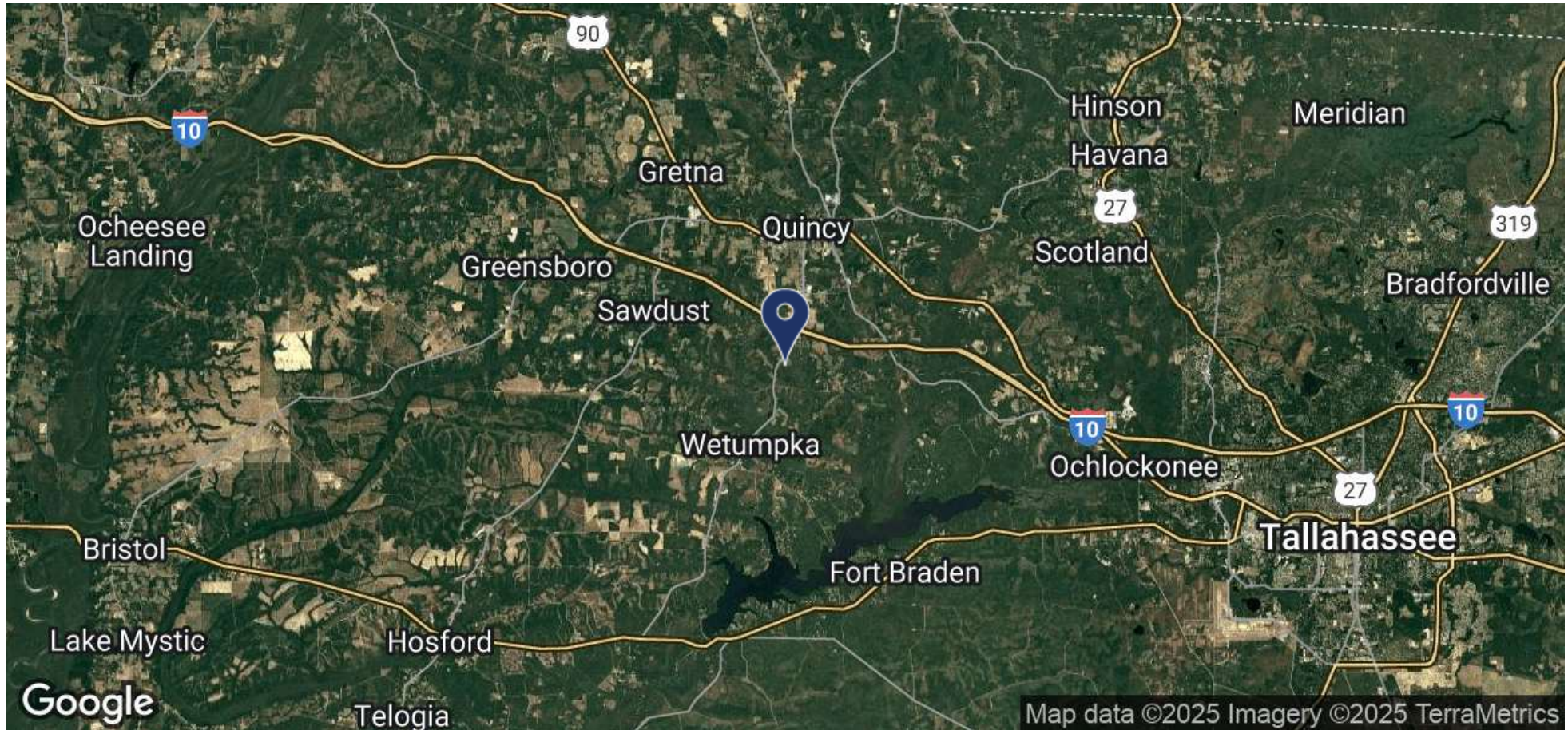
TLG REAL ESTATE SERVICES
3520 Thomasville Road, Suite 200, Tallahassee, FL 32309
850.385.6363



El Dorado 725 +/- Acres

Location Map

4433 Pat Thomas Parkway, Quincy, FL 32351



Clark Smith
850.510.6333
csmith@tlgproperty.com

TLG REAL ESTATE SERVICES
3520 Thomasville Road, Suite 200, Tallahassee, FL 32309
850.385.6363

