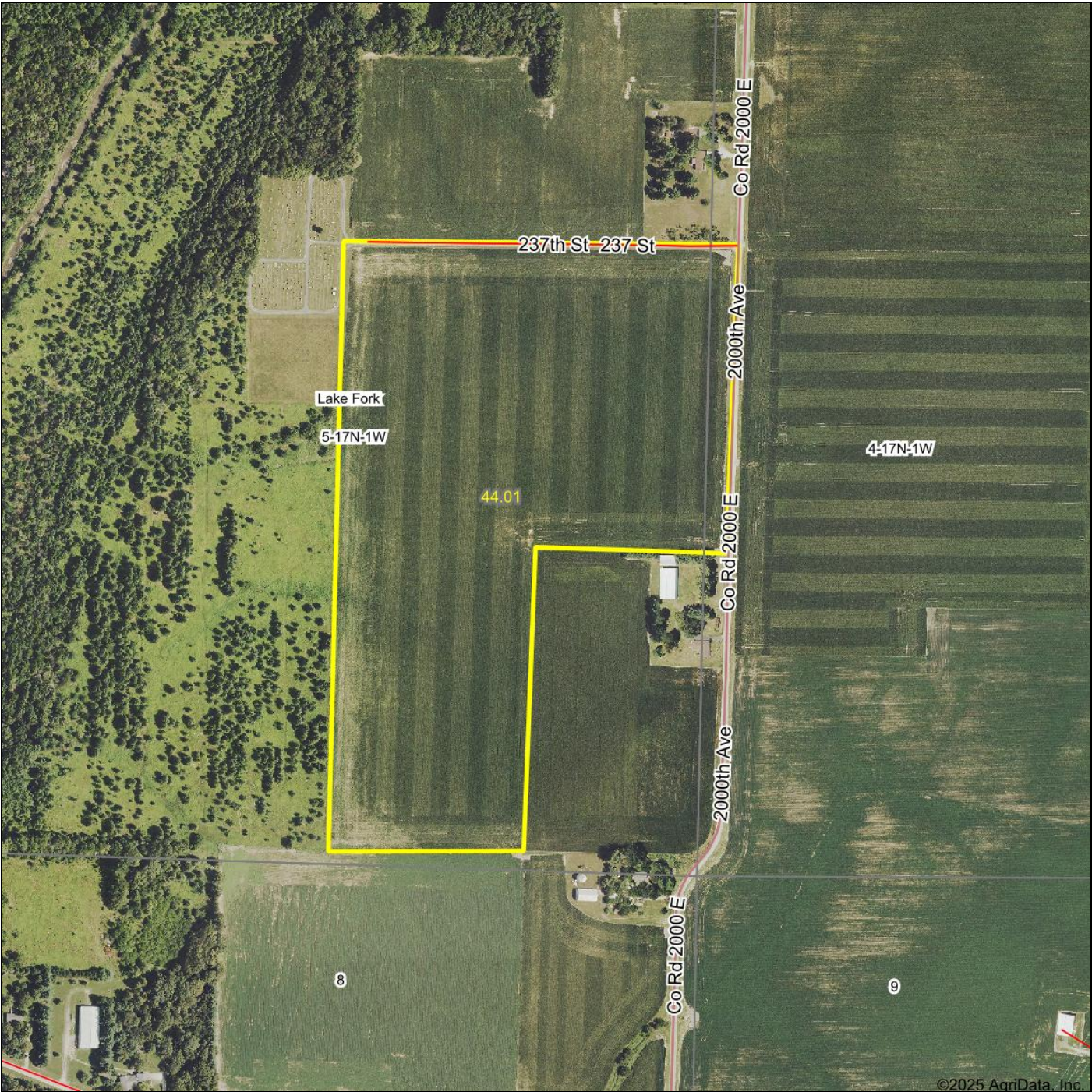


Aerial Map



Boundary Center: 39° 56' 55.63, -89° 13' 12.1

0ft 508ft 1016ft



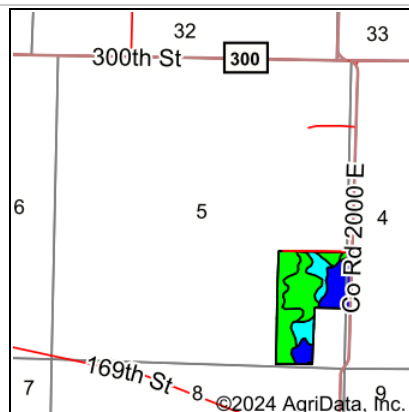
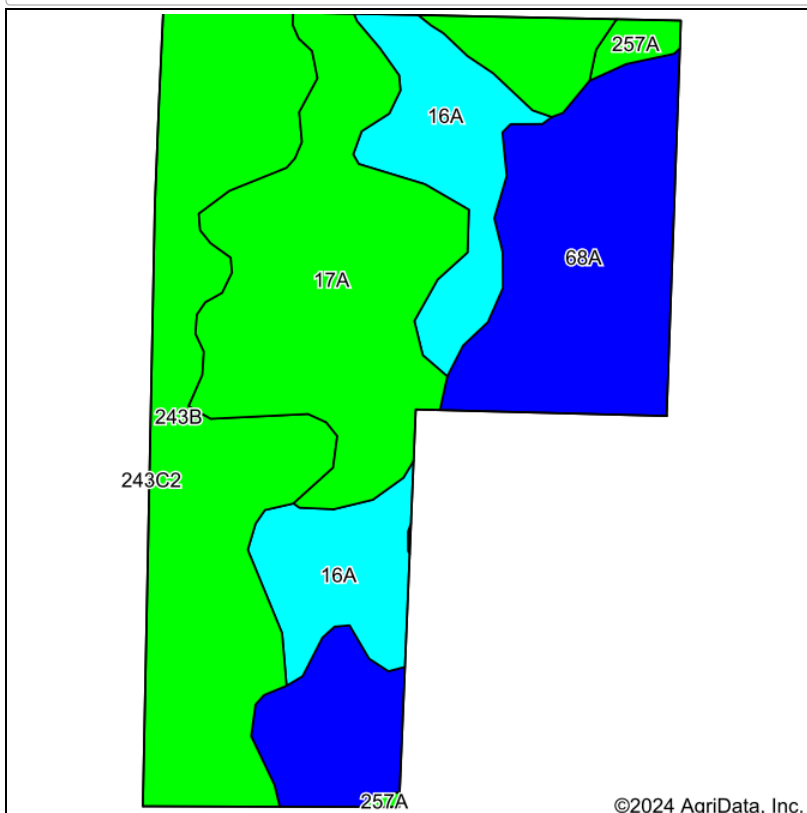
4/4/2025

FIRST ILLINOIS
AG GROUP



5-17N-1W
Logan County
Illinois

Soils Map



State: **Illinois**
 County: **Logan**
 Location: **5-17N-1W**
 Township: **Lake Fork**
 Acres: **44.01**
 Date: **10/1/2024**

FIRST ILLINOIS
AG GROUP

Maps Provided By:



Area Symbol: IL107, Soil Area Version: 19

Code	Soil Description	Acres	Percent of field	Il. State Productivity Index Legend	*Corn Bu/A	*Soybeans Bu/A	*Wheat Bu/A	*Oats Bu/A <i>b</i>	*Sorghum <i>c</i> Bu/A	*Grass-legume <i>e</i> hay, T/A	*Crop productivity index for optimum management
**243B	St. Charles silt loam, 2 to 5 percent slopes	12.69	28.8%		**166	**51	**64	**86	0	**5.00	**121
17A	Keomah silt loam, 0 to 2 percent slopes	12.19	27.7%		161	51	65	83	0	5.10	119
**68A	Sable silty clay loam, 0 to 2 percent slopes	11.39	25.9%		**192	**63	**74	**99	0	**5.80	**143
16A	Rushville silt loam, 0 to 2 percent slopes	7.20	16.4%		147	48	61	73	0	4.60	109
257A	Clarksdale silt loam, 0 to 2 percent slopes	0.54	1.2%		174	56	69	89	0	5.30	128
Weighted Average					168.3	53.7	66.4	86.4	*	5.2	124.3

Table: Optimum Crop Productivity Ratings for Illinois Soil EFOTG are sourced from Bulletin 811 calculated Map Unit Base Yield Indices, and adjusted (Adj) for slope, erosion, and surface texture. Publication Date: 02-08-2023

Crop yields and productivity (B811 EFOTG) are maintained at the following USDA web site: 2023 Illinois Soil Productivity and Yield Indices: <https://efotg.sc.egov.usda.gov/#/state/IL/documents/section=2&folder=52809>

* The flood/pond factor has been removed for B811 indexes and yields.

** Base indexes from Bulletin 811 adjusted for slope, erosion, and surface texture according to the Il. Soils EFOTG

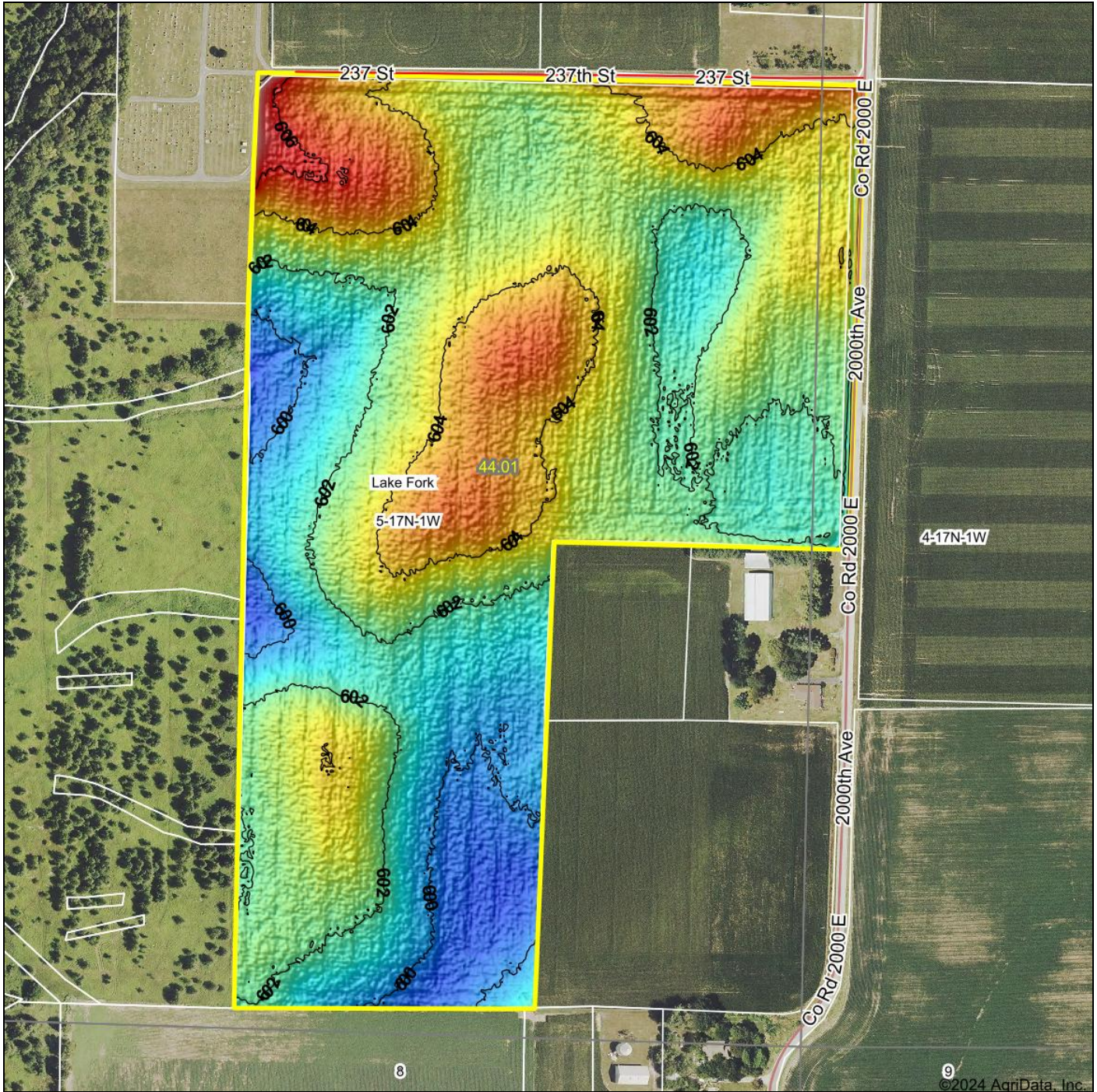
b Soils in the southern region were not rated for oats and are shown with a zero "0".

c Soils in the northern region or in both regions were not rated for grain sorghum and are shown with a zero "0".

e Soils in the well drained group were not rated for grass-legume and are shown with a zero "0".

Soils data provided by USDA and NRCS. Soils data provided by University of Illinois at Champaign-Urbana.

Topography Hillshade



Low Elevation High



FIRST ILLINOIS
AG GROUP

Maps Provided By:



© AgriData, Inc. 2023

www.AgridataInc.com

Field borders provided by Farm Service Agency as of 5/21/2008.

Source: USGS 1 meter dem
Interval(ft): 2

Min: 598.6

Max: 608.5

Range: 9.9

Average: 602.5

Standard Deviation: 1.61 ft

0ft 331ft 661ft



10/1/2024

5-17N-1W
Logan County
Illinois

Boundary Center: 39° 56' 55.54, -89° 13' 12.14