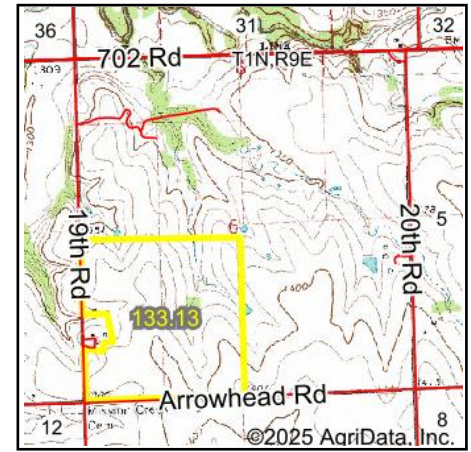
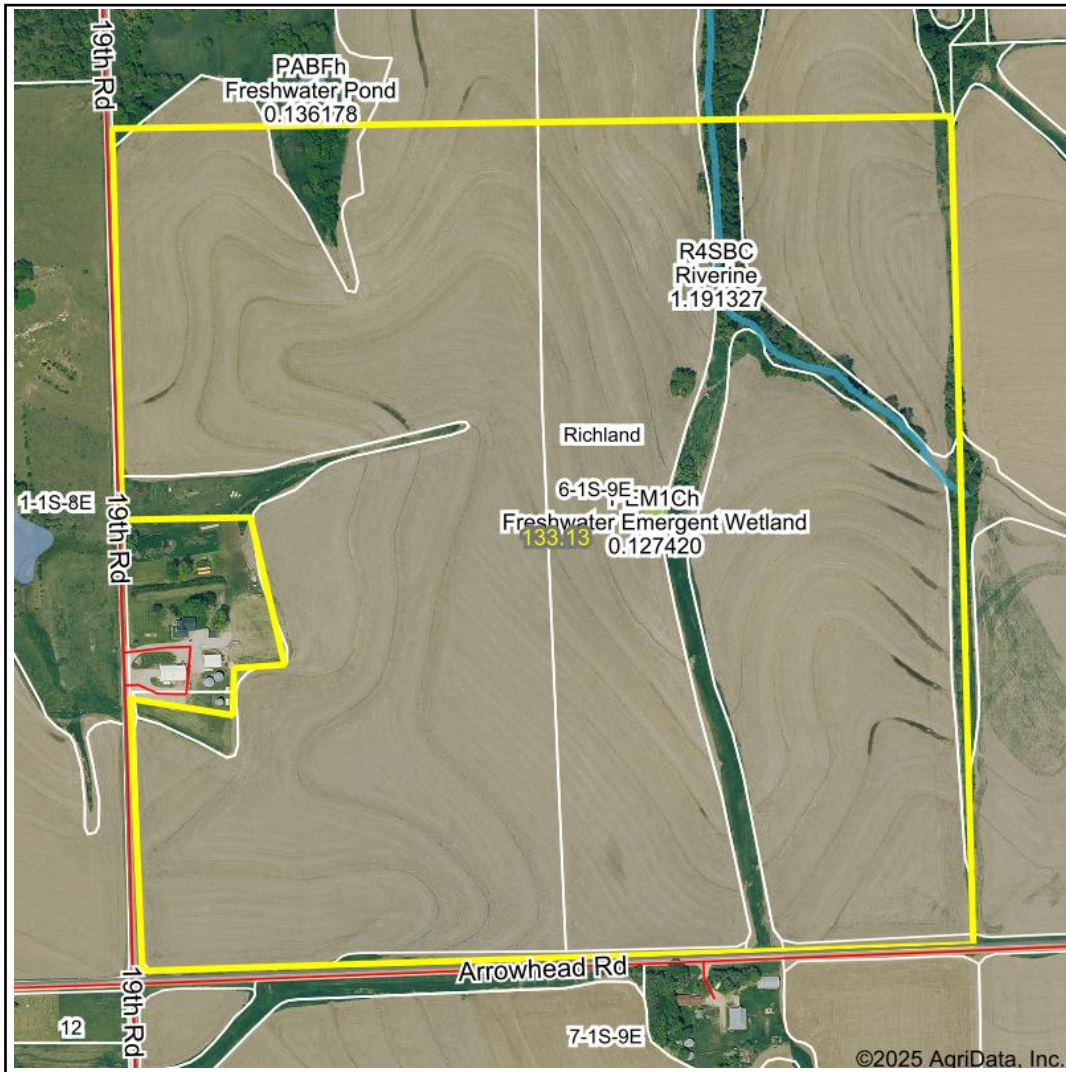


Wetlands Map



State: **Kansas**
 Location: **6-1S-9E**
 County: **Marshall**
 Township: **Richland**
 Date: **4/11/2025**



Maps Provided By:



0ft 646ft 1292ft

Classification Code	Type	Acres
R4SBC	Riverine	0.66
PEM1Ch	Freshwater Emergent Wetland	0.13
Total Acres		0.79

Data Source: National Wetlands Inventory website. U.S. DoI, Fish and Wildlife Service, Washington, D.C. <http://www.fws.gov/wetlands/>