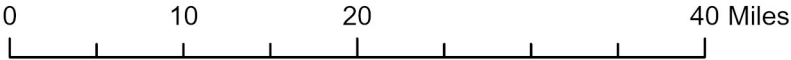


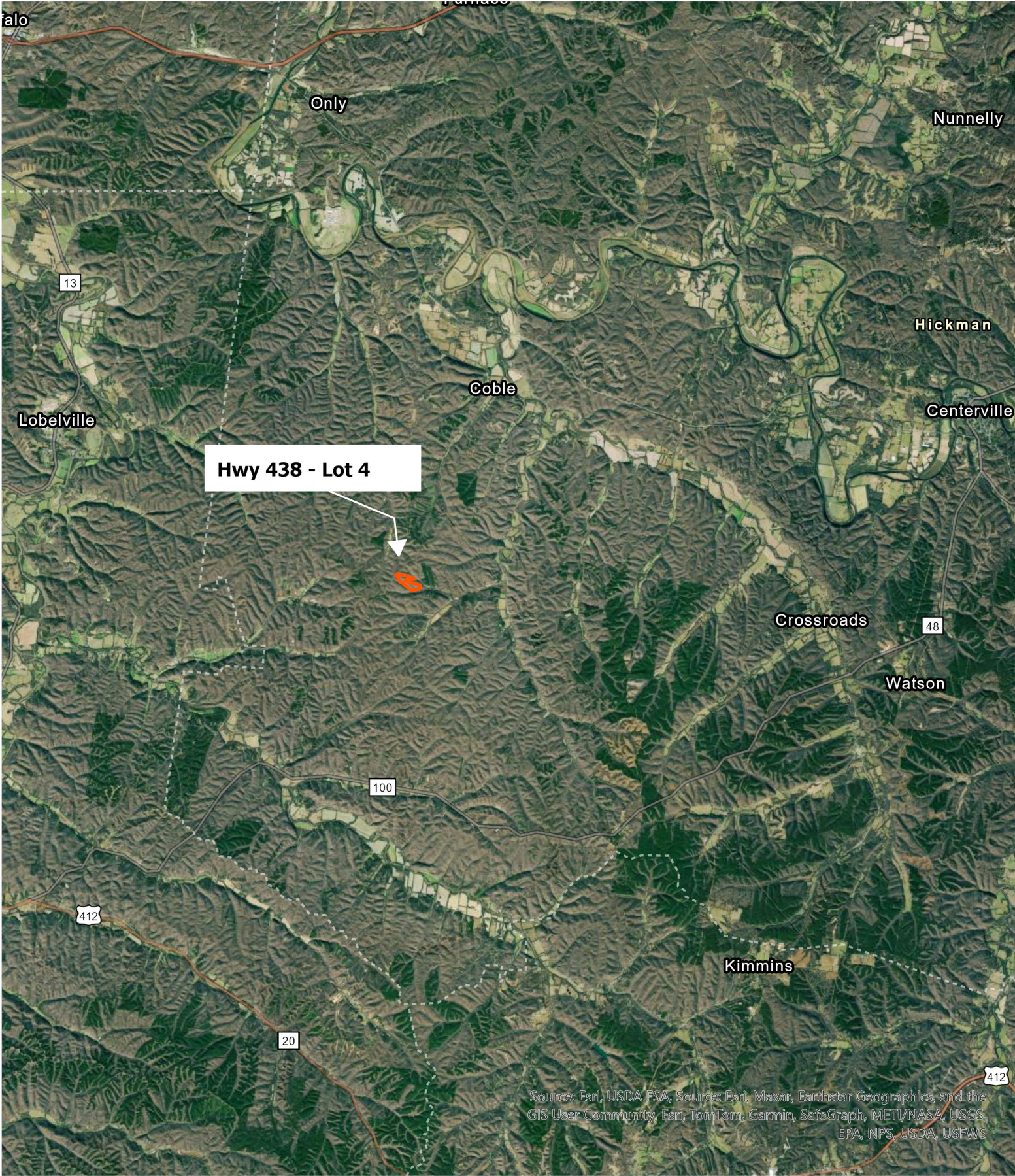
Hwy 438 - Lot 4
Hickman County, Tennessee, 40 AC +/-



Source: Esri, USDA FSA, Source: Esri, Maxar, Earthstar Geographics, and the
GIS User Community, Esri, TomTom, Garmin, SafeGraph, FAO, METI/NASA,
USGS, EPA, NPS, USFWS



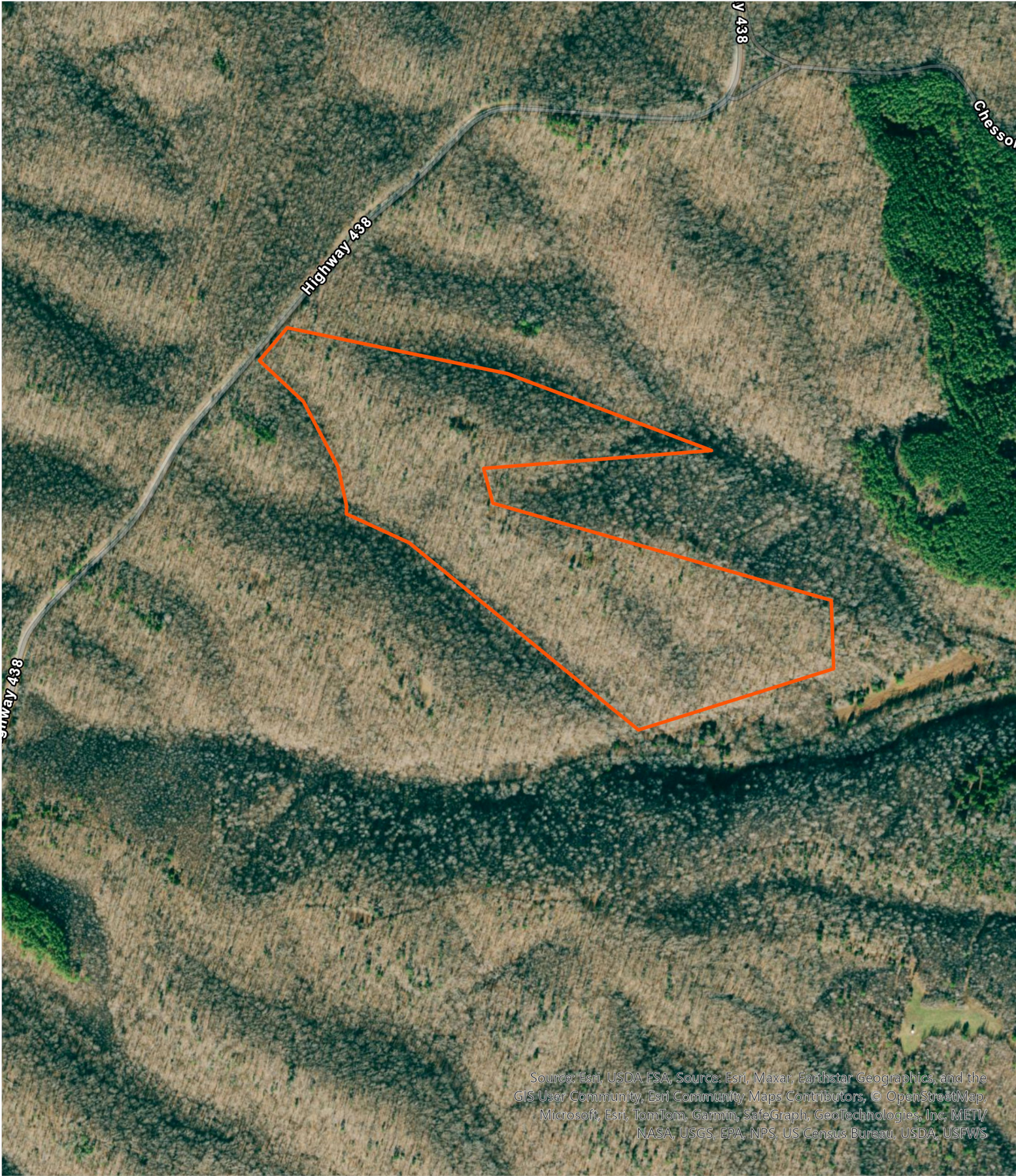
Hwy 438 - Lot 4
Hickman County, Tennessee, 40 AC +/-



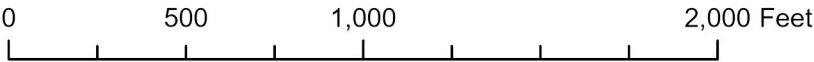
Source: Esri, USDA, FSA, Source: Esri, Maxar, Earthstar Geographics, and the
GIS User Community, Esri, TomTom, Garmin, SafeGraph, METI/NASA, USGS,
EPA, NPS, USDA, USEWS



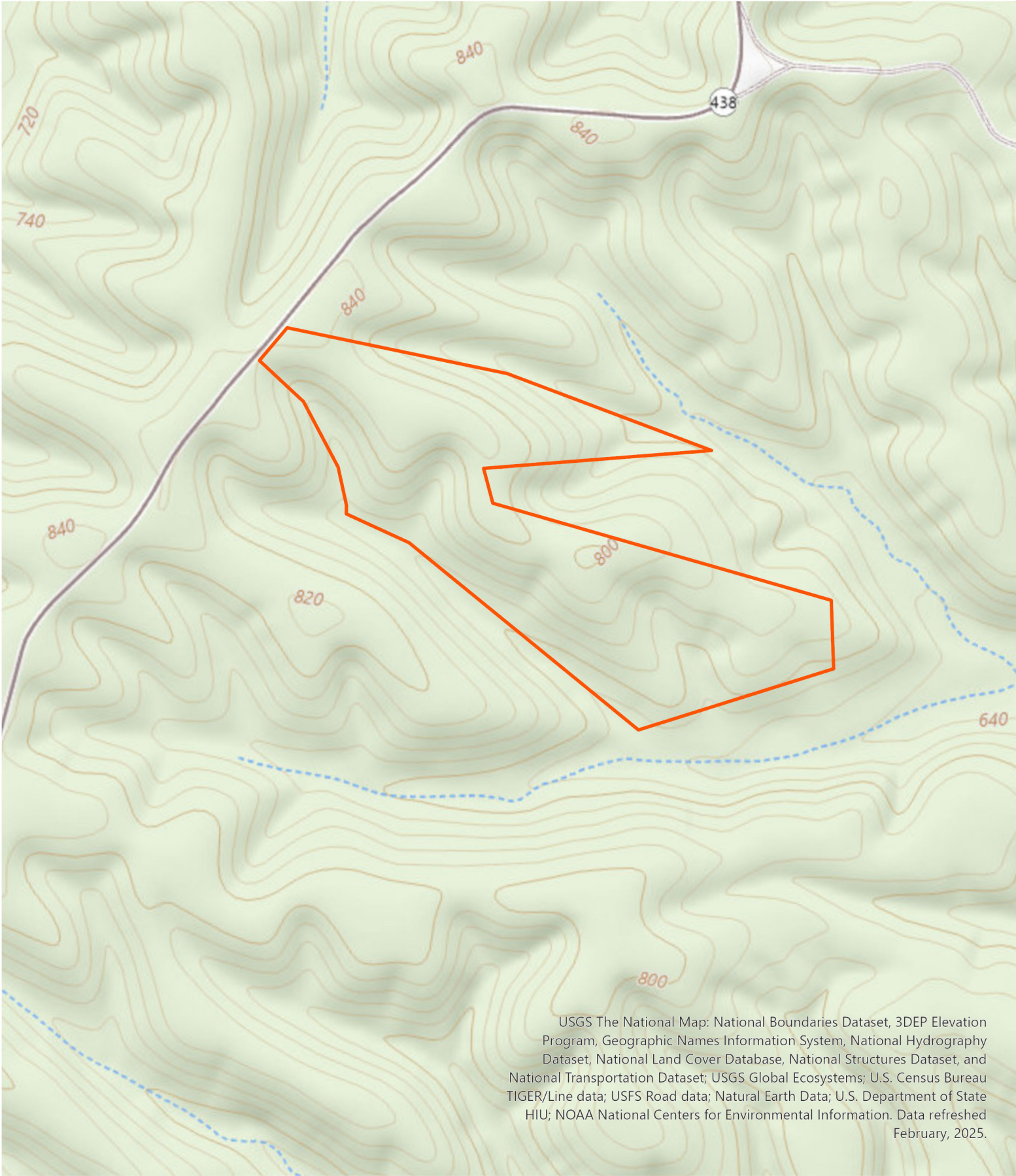
Hwy 438 - Lot 4
Hickman County, Tennessee, 40 AC +/-



Source: Esri, USDA FSA, Source: Esri, Maxar, Earthstar Geographics, and the
GIS User Community, Esri Community Maps Contributors, © OpenStreetMap
Microsoft, Esri, TomTom, Garmin, SafeGraph, GeoTechnologies, Inc, METV
NASA, USGS, EPA, NPS, US Census Bureau, USDA, USFWS



Hwy 438 - Lot 4
Hickman County, Tennessee, 40 AC +/-



USGS The National Map: National Boundaries Dataset, 3DEP Elevation Program, Geographic Names Information System, National Hydrography Dataset, National Land Cover Database, National Structures Dataset, and National Transportation Dataset; USGS Global Ecosystems; U.S. Census Bureau TIGER/Line data; USFS Road data; Natural Earth Data; U.S. Department of State HIU; NOAA National Centers for Environmental Information. Data refreshed February, 2025.

