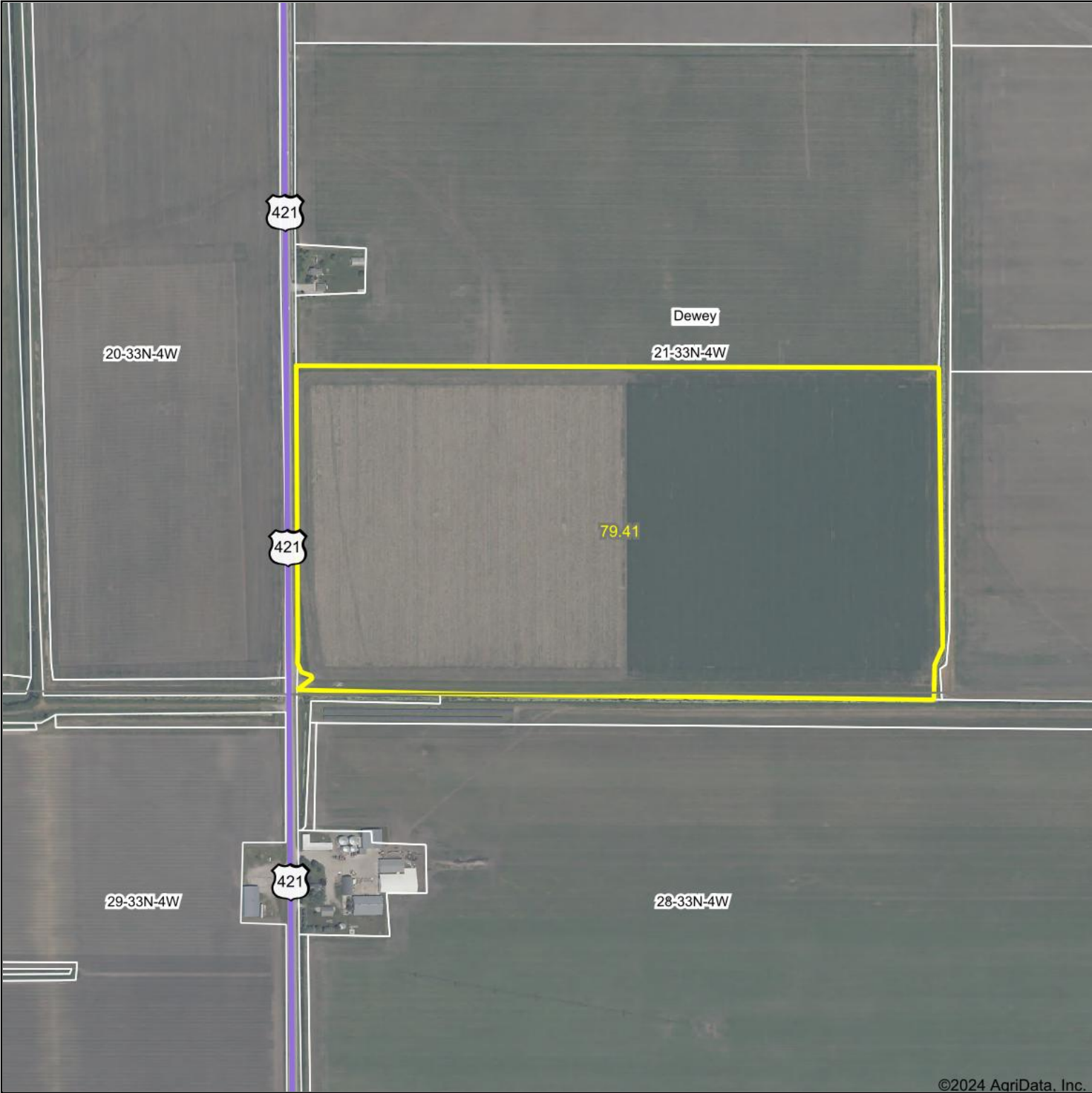



Aerial Map







HALDERMAN
REAL ESTATE & FARM MANAGEMENT

Boundary Center: 41° 17' 24.36, -86° 53' 10.45


21-33N-4W
LaPorte County
Indiana

0ft 631ft 1261ft



12/10/2024

Maps Provided By:



surety
CUSTOMIZED ONLINE MAPPING

© AgriData, Inc. 2023 www.AgriDataInc.com

Field borders provided by Farm Service Agency as of 5/21/2008.