



Horn Hill Farm

TBD LCR 390, Groesbeck, TX

64.5 Acres | \$599,000



Copyright 2025 Grand Land Realty, LLC
The material contained in this document is based in part upon information furnished to Grand Land Realty, LLC. by sources deemed to be reliable. The information is believed to be accurate in all material respects, but no representation or warranty, expressed, or implied, as to list accuracy or completeness is made by any party. Recipients should conduct their own investigation and analysis of the information described herein.



Dustin Preston

Realtor®- Land Specialist

dpreston@grandland.com

(281) 787-5401

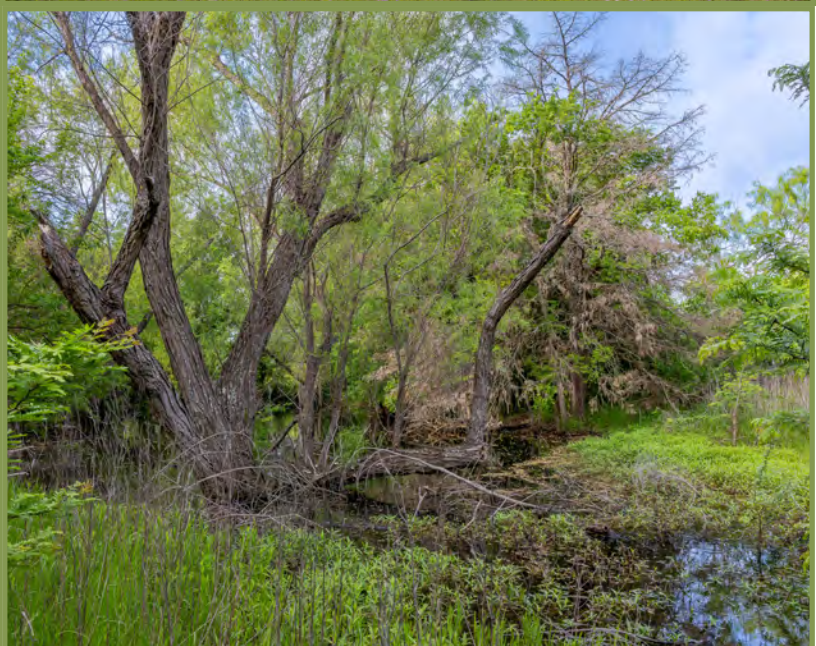
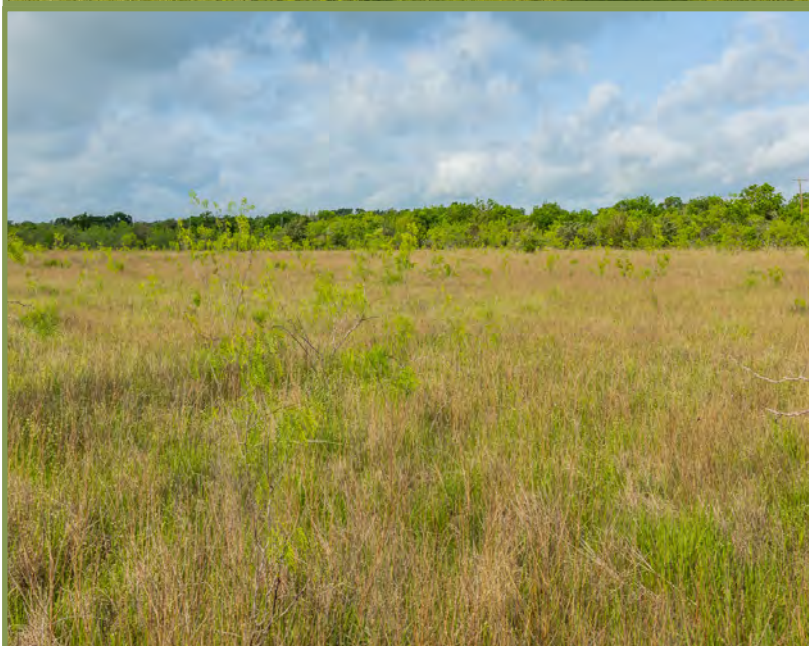
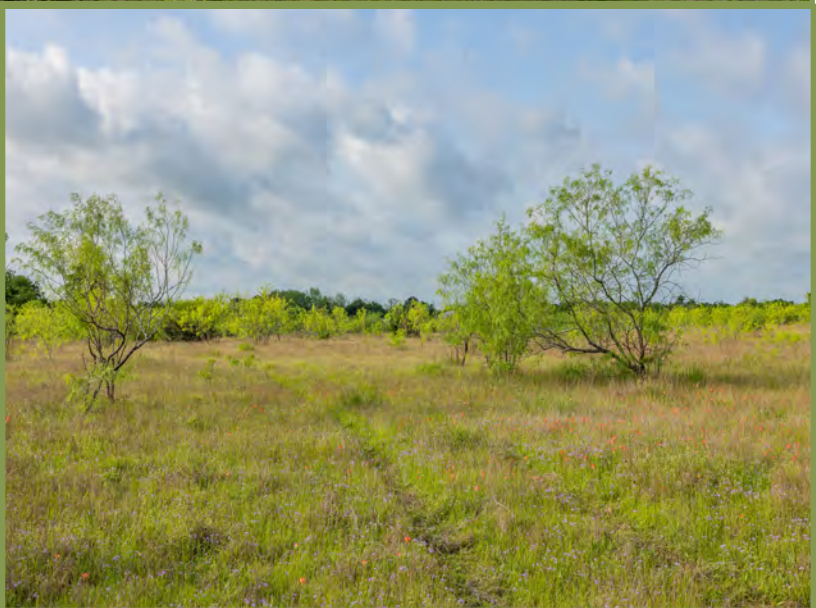
Property Description

Horn Hill Farm is 64 acres of exceptional land located in Groesbeck, TX, just 25 miles from Waco. The property is rectangular in shape and features 3/4 of a mile of frontage on two sides along county roads. The topography is primarily flat, making it an ideal candidate for future development. The ranch includes two ponds—one medium-sized and one small—both of which hold water year-round, even during the hottest parts of summer. A balanced mix of open pasture and tree cover provides both beauty and natural habitat. With its proximity to Waco, Horn Hill Farm is perfectly suited for use as an investment, recreational getaway, or homestead.

Copyright 2025 Grand Land Realty, LLC
The material contained in this document is based in part upon information furnished to Grand Land Realty, LLC. by sources deemed to be reliable. The information is believed to be accurate in all material respects, but no representation or warranty, expressed, or implied, as to list accuracy or completeness is made by any party. Recipients should conduct their own investigation and analysis of the information described herein.



Dustin Preston
Realtor®- Land Specialist
dpreston@grandland.com
(281) 787-5401



TREES

Live Oak
Cedar Elm
Texas Mountain
Laurel

WILDLIFE

Whitetail deer
Rio Grande Turkey
Waterfowl
Hogs

GRASSES

Bahia
Perennial Ryegrass
Bermuda

UTILITIES

Electricity available at the
road
Well Needed





SCAN HERE TO SEE MORE OF
HORN HILL FARM

Location

Limestone County

25 miles to Waco, 33 miles to Corsicana, and 60 miles to Bryan/
College Station.

Directions

From State HWY 164, travel north on LCR 390 for 4 miles until you reach LCR 392. Turn left and travel 0.25 miles—the property will be on your right.

Copyright 2025 Grand Land Realty, LLC
The material contained in this document is based in part upon information furnished to Grand Land Realty, LLC, by sources deemed to be reliable. The information is believed to be accurate in all material respects, but no representation or warranty, expressed, or implied, as to list accuracy or completeness is made by any party. Recipients should conduct their own investigation and analysis of the information described herein.

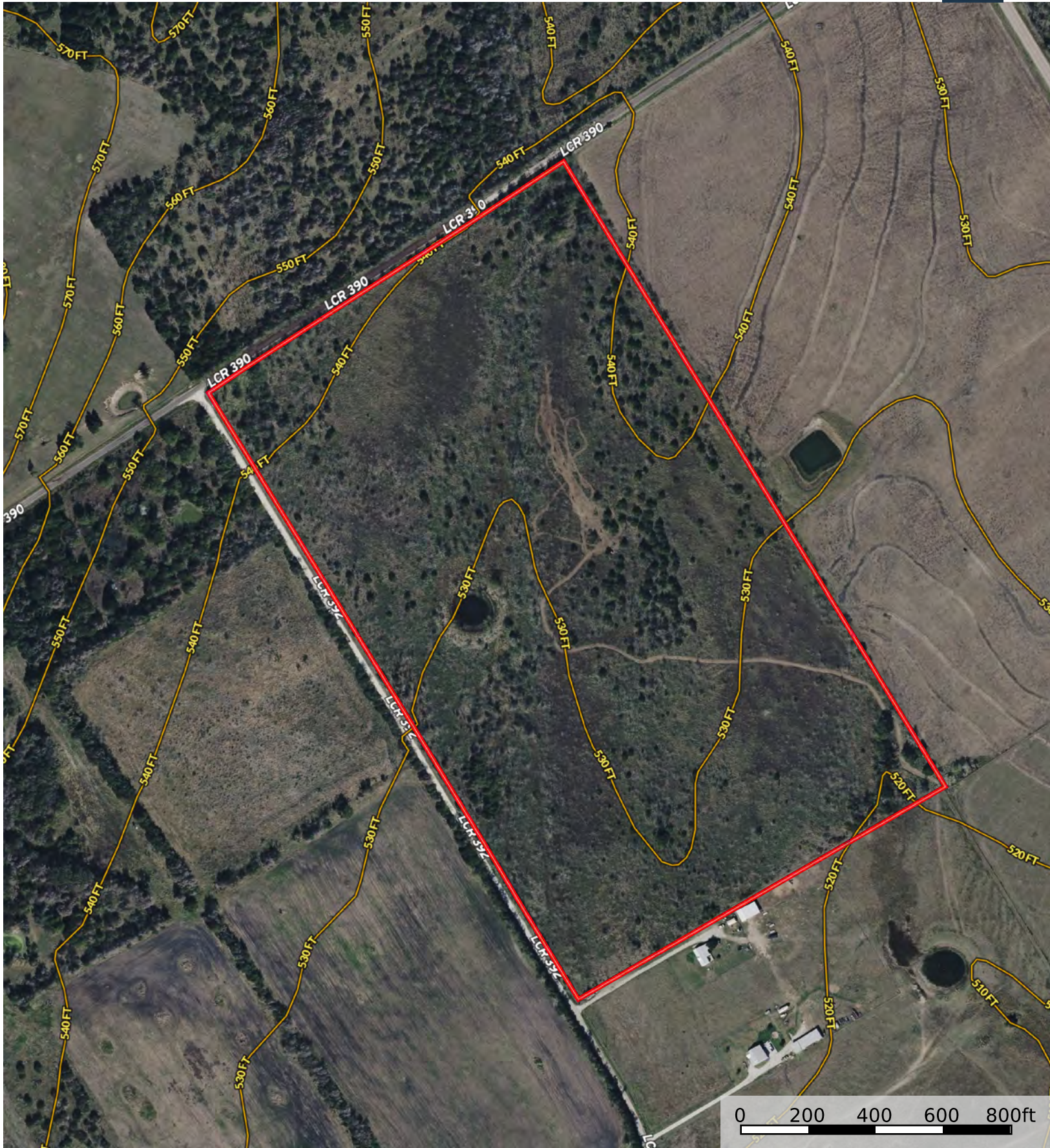


Dustin Preston
Realtor®- Land Specialist
dpreston@grandland.com
(281) 787-5401



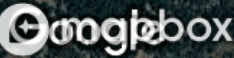


Boundary



Boundary





Boundary Boundary 1