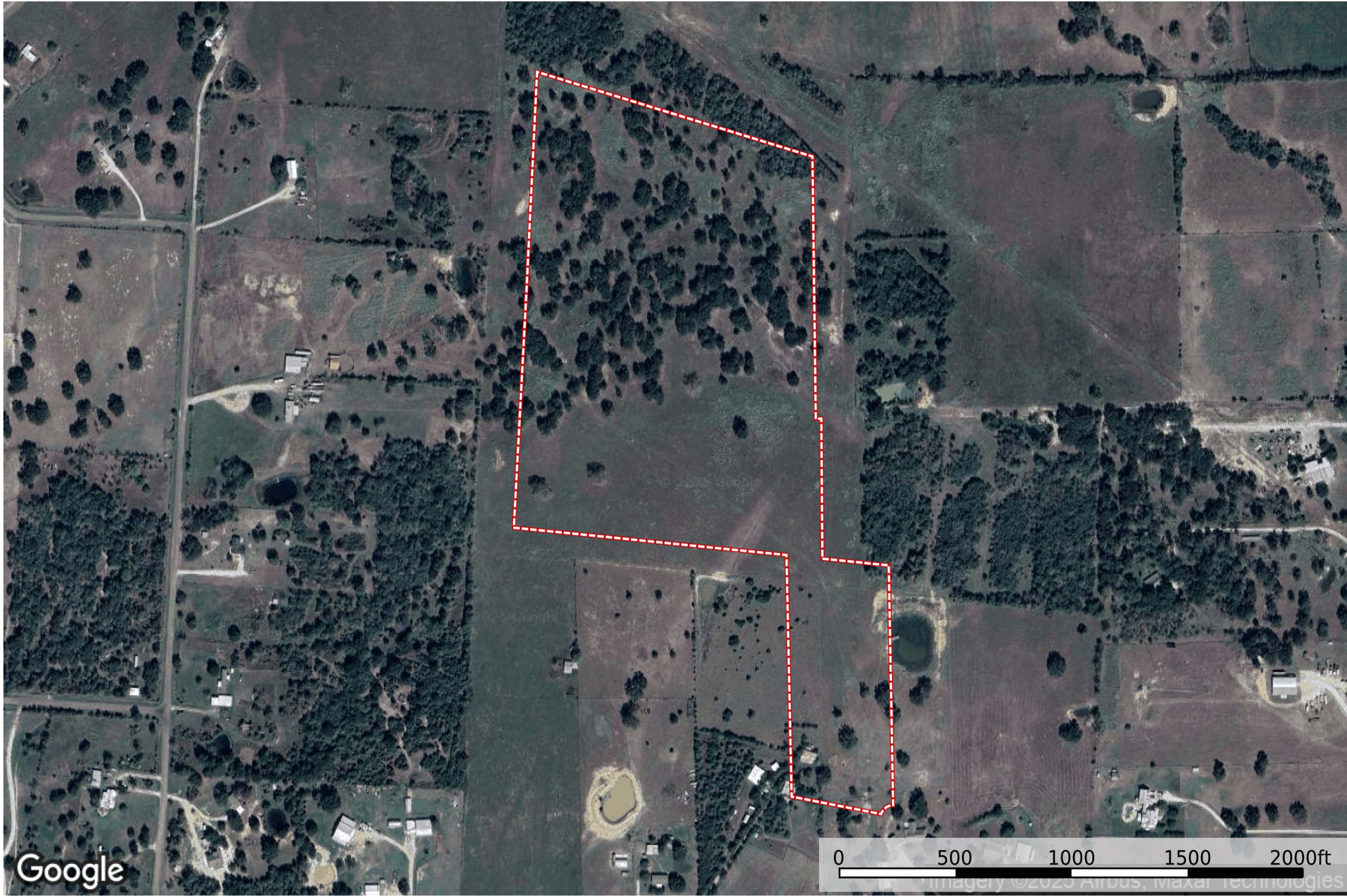


13187 Wildflower Ln, Iola, TX 77861  
Texas, AC +/-

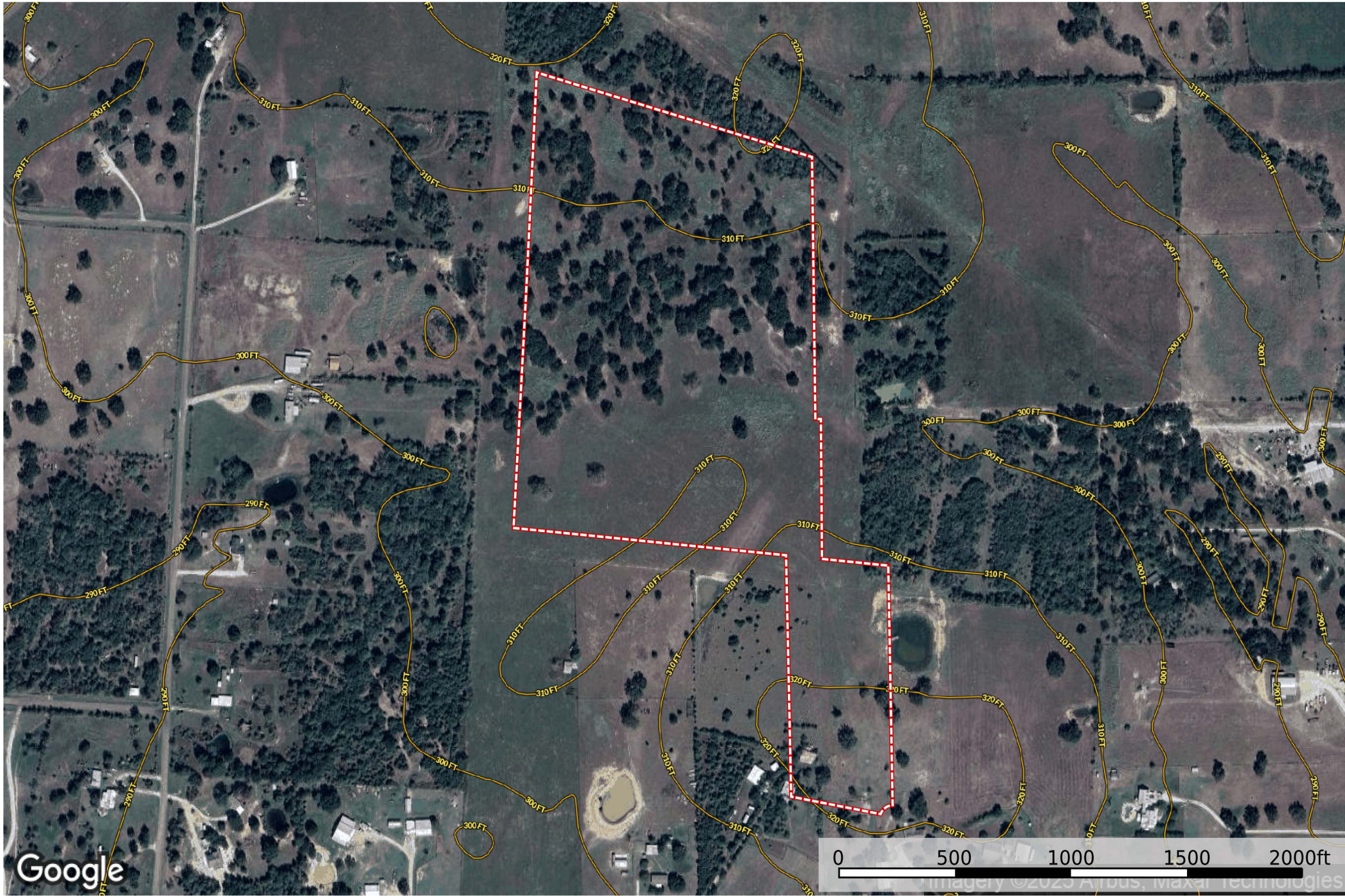


 Boundary



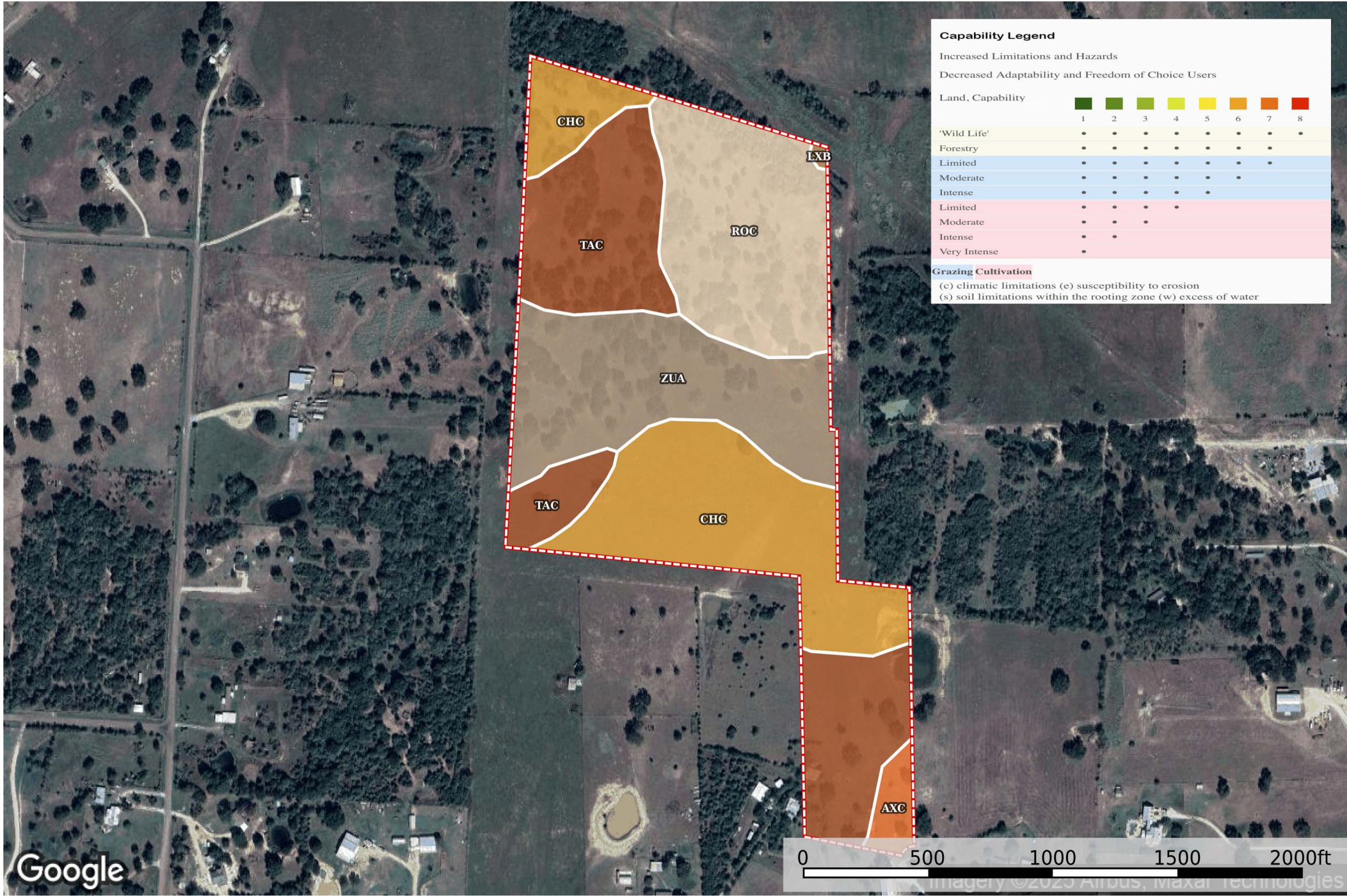






 Boundary





SOIL CODE	SOIL DESCRIPTION	ACRES	%	GPI	NCCPI	CAP
TaC	Tabor fine sandy loam, 1 to 5 percent slopes	16.61	27.61	0	39	4e
ChC	Chazos loamy fine sand, 1 to 5 percent slopes	16.02	26.62	0	55	3e
ZuA	Zulch fine sandy loam, 0 to 1 percent slopes	13.51	22.45	0	49	3w
RoC	Robco-Tanglewood complex, 1 to 5 percent slopes	12.58	20.91	0	48	3e
AxC	Axtell fine sandy loam, 1 to 5 percent slopes	1.33	2.21	0	55	4e
LxB	Lufkin-Rader complex, gently undulating	0.12	0.2	0	43	3e
TOTALS		60.17( )	100%	-	47.75	3.3



The information contained herein was obtained from sources deemed to be reliable. Land id™ Services makes no warranties or guarantees as to the completeness or accuracy thereof.