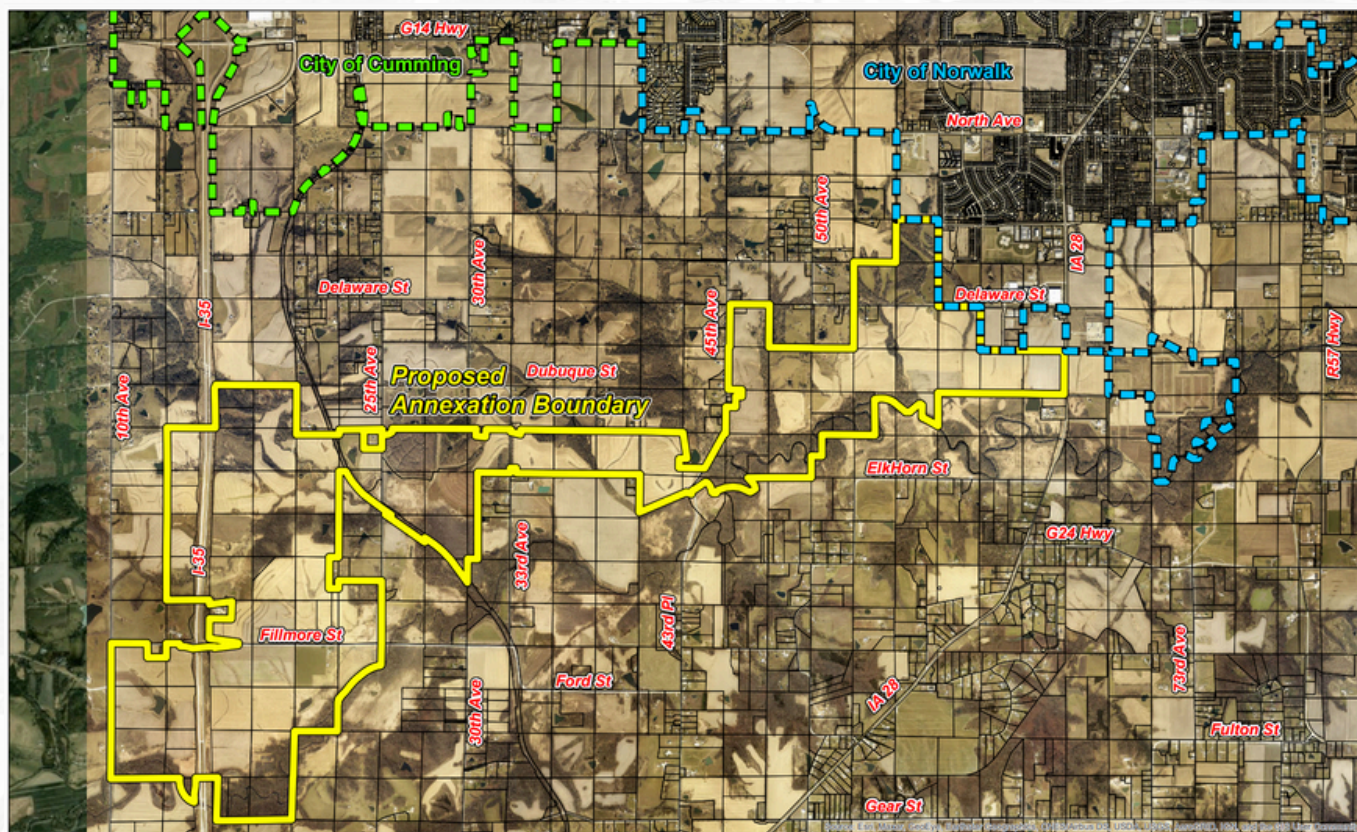


# NORWALK'S SOUTHWEST DEVELOPMENT CORRIDOR

## EXPANDING CITY LIMITS



Norwalk Annexation Proposal Map



Date: 12/12/2024

## NEWLY ANNEXED 2,900-ACRES

Norwalk's westward annexation will provide access to 2,900-acres for tech, data, and industrial development and connect Iowa Highway 28 to Interstate 35. The City is investing in infrastructure expansions in this corridor including the new 72-inch North River Sewer Interceptor, water main expansion and extension of Delaware Street west towards 50th Avenue.



VISIT  
<https://norwalkiaswdevelopment.com>  
FOR MORE INFORMATION