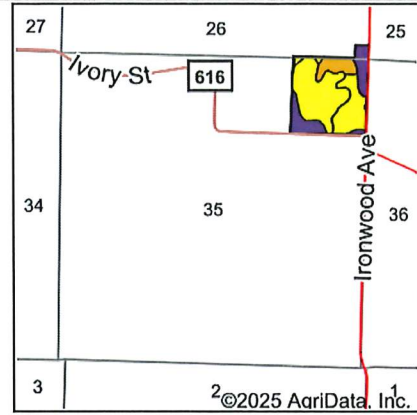
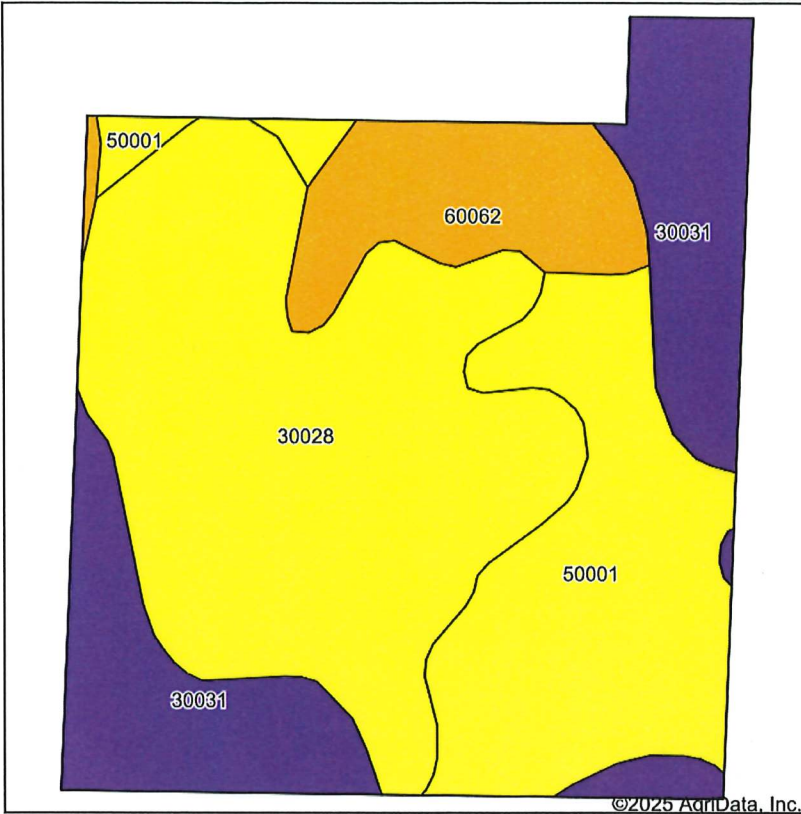


# Soils Map



State: **Missouri**  
 County: **Macon**  
 Location: **35-58N-15W**  
 Township: **Liberty**  
 Acres: **40.9**  
 Date: **4/22/2025**



Soils data provided by USDA and NRCS.

©2025 AgriData, Inc.

© AgriData, Inc. 2023

www.AgriDataInc.com

Area Symbol: MO121, Soil Area Version: 28

Code	Soil Description	Acres	Percent of field	Non-Irr Class Legend	Non-Irr Class *c	*n NCCPI Overall	*n NCCPI Corn	*n NCCPI Small Grains	*n NCCPI Soybeans
30028	Armstrong clay loam, 5 to 9 percent slopes, severely eroded	17.62	43.0%		IVe	56	56	48	38
50001	Armstrong loam, 5 to 9 percent slopes, eroded	9.88	24.2%		IVe	66	66	60	49
30031	Armstrong clay loam, 9 to 14 percent slopes, severely eroded	9.04	22.1%		Vle	51	51	39	32
60062	Bevier silty clay loam, 3 to 8 percent slopes, moderately eroded	4.36	10.7%		IIle	64	64	57	49
Weighted Average					4.34	*n 58.2	*n 58.2	*n 49.9	*n 40.5

\*n: The aggregation method is "Weighted Average using all components"

\*c: Using Capabilities Class Dominant Condition Aggregation Method

Soils data provided by USDA and NRCS.