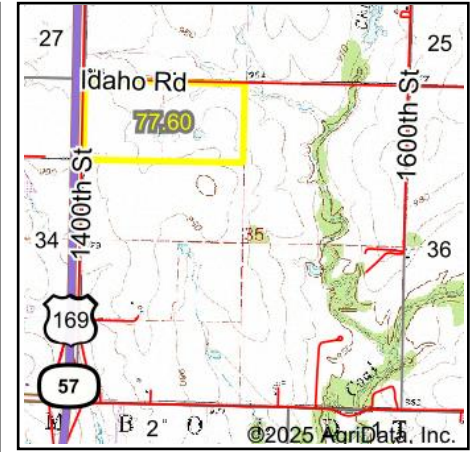
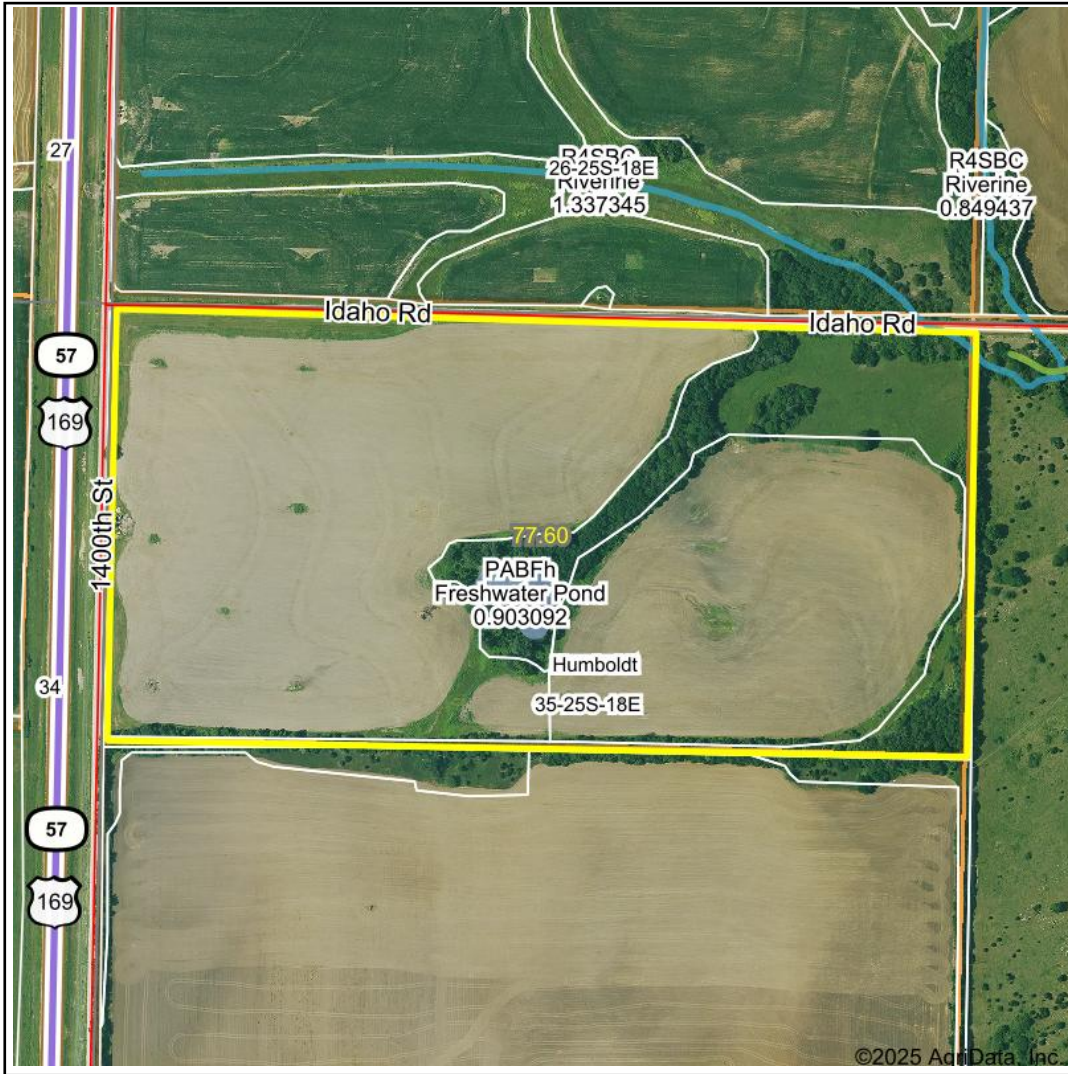


# Wetlands Map



State: **Kansas**  
 Location: **35-25S-18E**  
 County: **Allen**  
 Township: **Humboldt**  
 Date: **5/7/2025**



Maps Provided By:



0ft 668ft 1336ft

Classification Code	Type	Acres
PABFh	Freshwater Pond	0.90
R4SBC	Riverine	0.05
Total Acres		0.95

Data Source: National Wetlands Inventory website. U.S. DoI, Fish and Wildlife Service, Washington, D.C. <http://www.fws.gov/wetlands/>