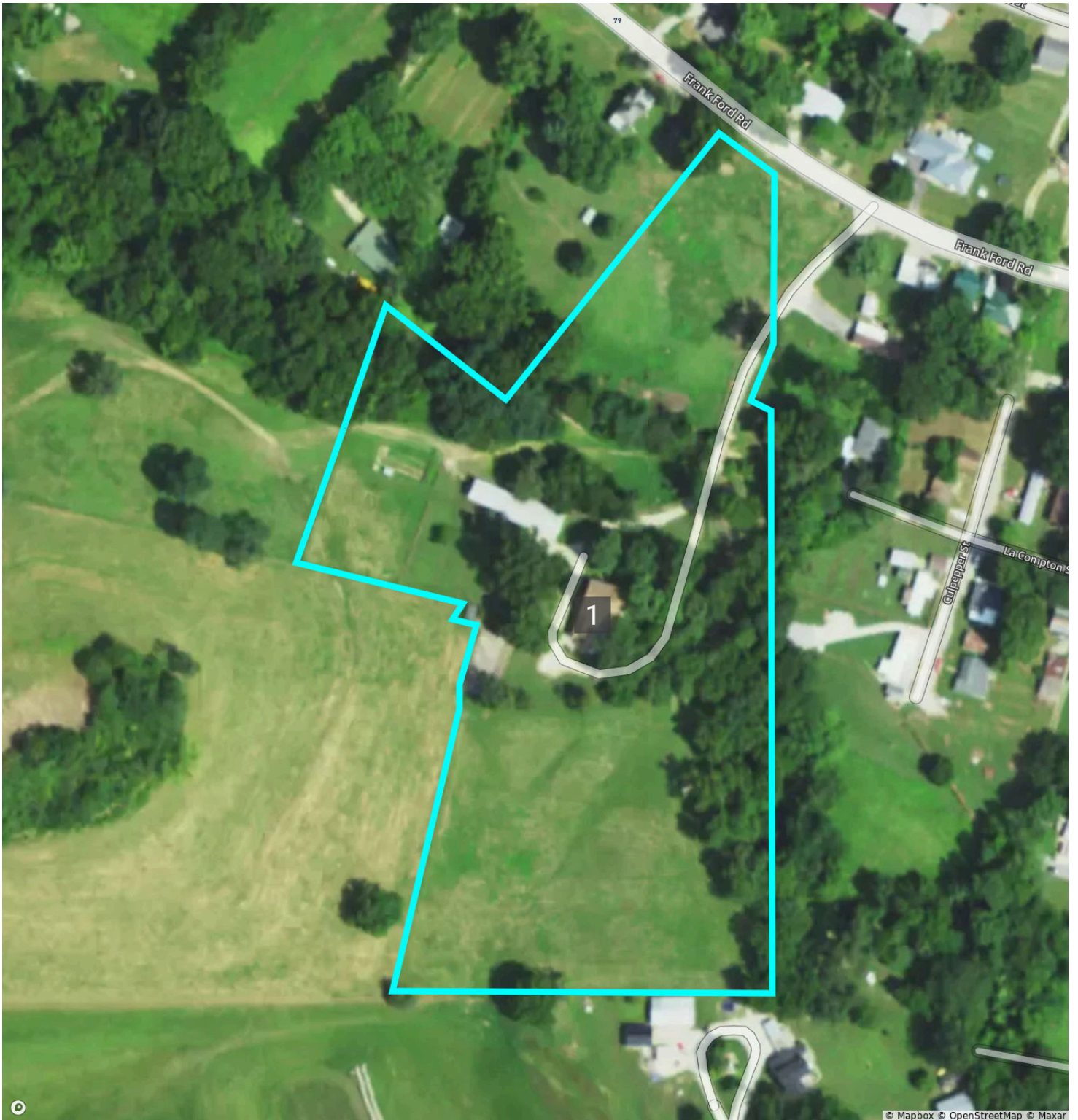


Overview



Pike, MO • Township: Buffalo • Location: 13-54N-2W

8.60 acres, 1 selection



Overview 8.60 acres, 1 selection



Pike, MO • Township: Buffalo • Location: 13-54N-2W

Type: Custom Boundary



Acres
8.60

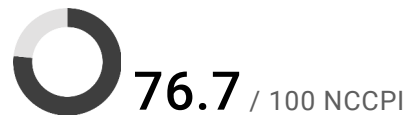
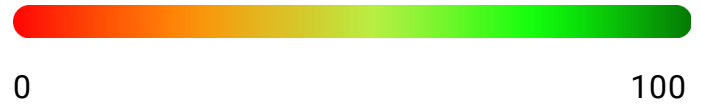
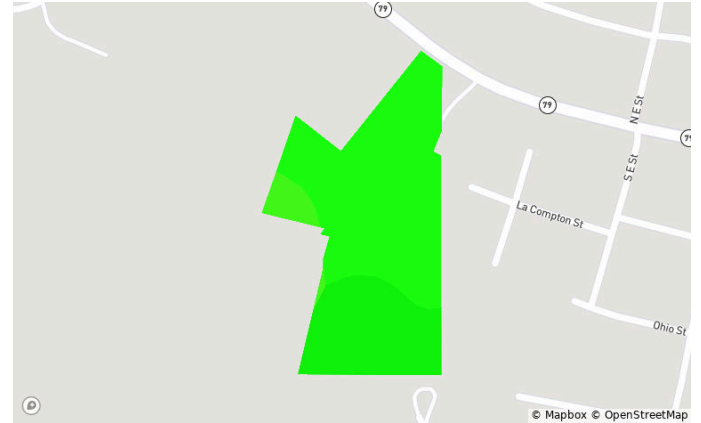
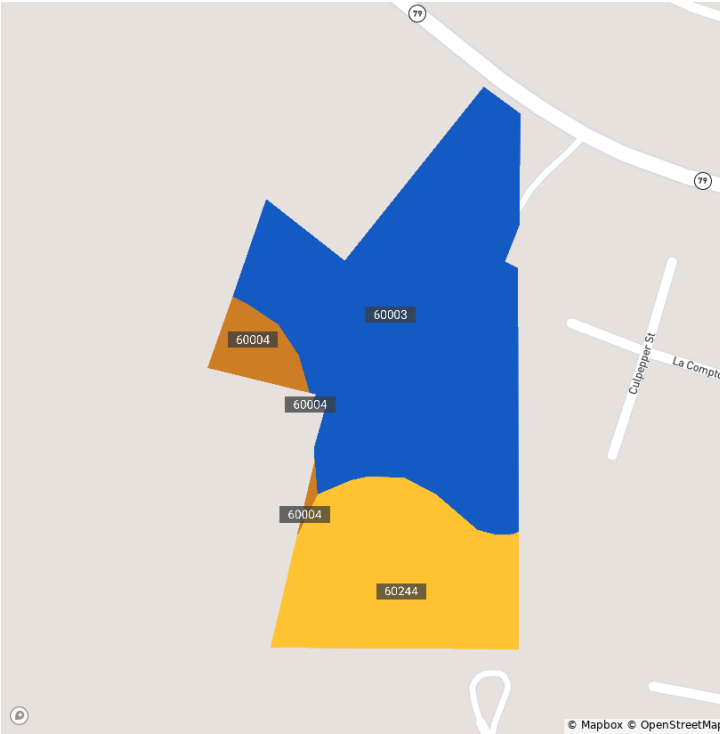
Lat. Long.
39.4547, -91.0632

Soils



Pike, MO • Township: Buffalo • Location: 13-54N-2W

8.60 acres, 1 selection



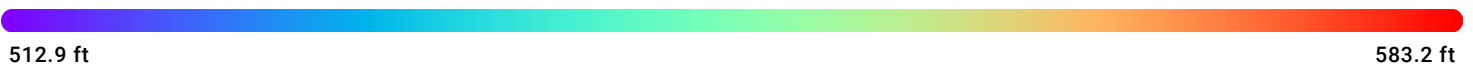
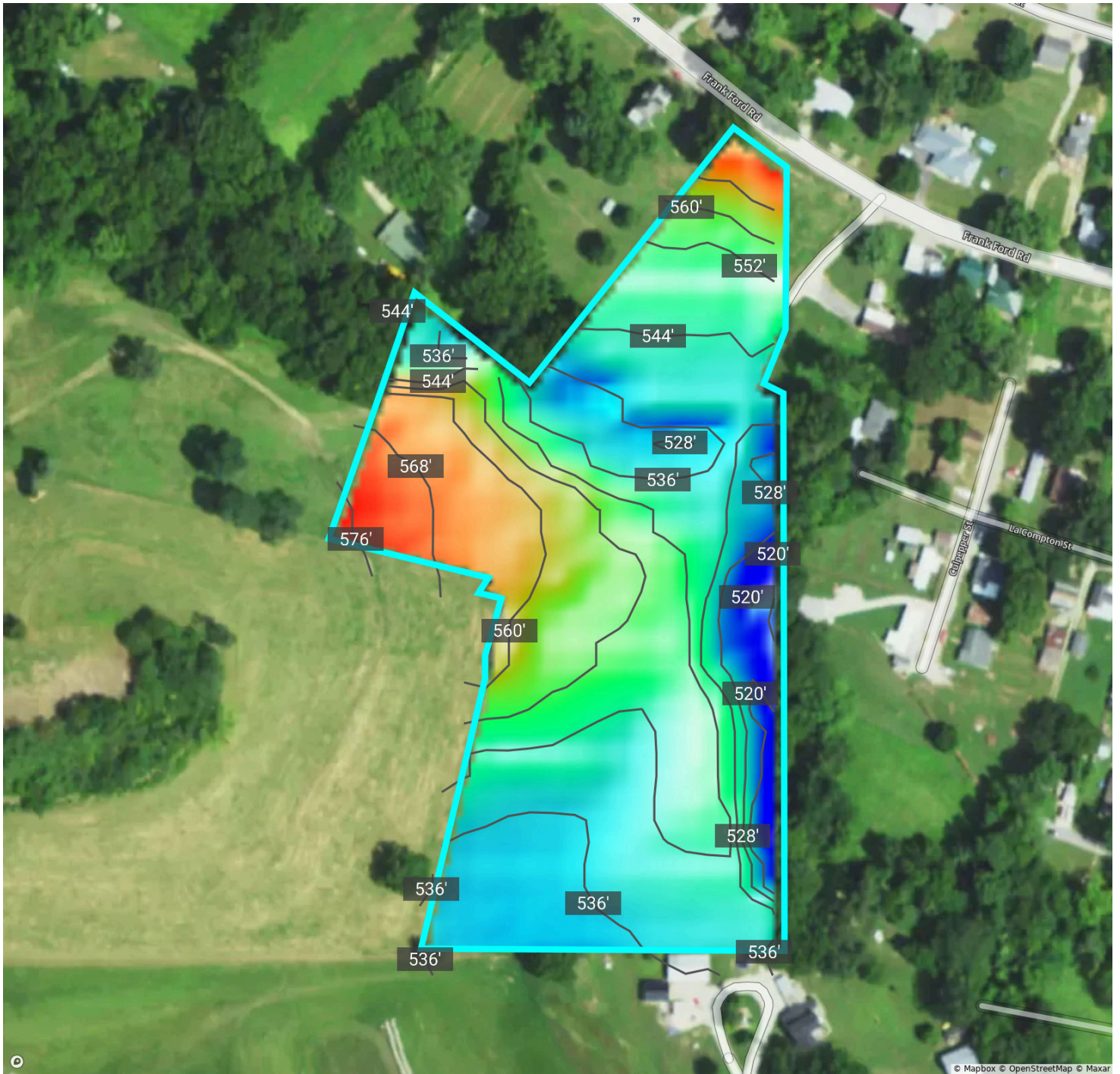
Code	Soil Description	Acres	% of Field	Non-IRR Class	IRR Class	NCCPI
● 60003	Menfro silt loam, 9 to 14 percent slopes, eroded	5.6	65.2%	4e	—	76.0
● 60244	Winfield silt loam, 5 to 10 percent slopes, eroded	2.6	29.9%	3e	—	79.4
● 60004	Menfro silt loam, 14 to 20 percent slopes, eroded	0.4	4.9%	6e	—	70.3

Elevation



Pike, MO • Township: Buffalo • Location: 13-54N-2W

8.60 acres, 1 selection



Source: USGS 3 Meter Dem

Interval: 8.0 ft

Range: 70.2 ft

Min: 512.9

Max: 583.2

Crop History



Pike, MO • Township: Buffalo • Location: 13-54N-2W

8.60 acres, 1 selection

2023



2022



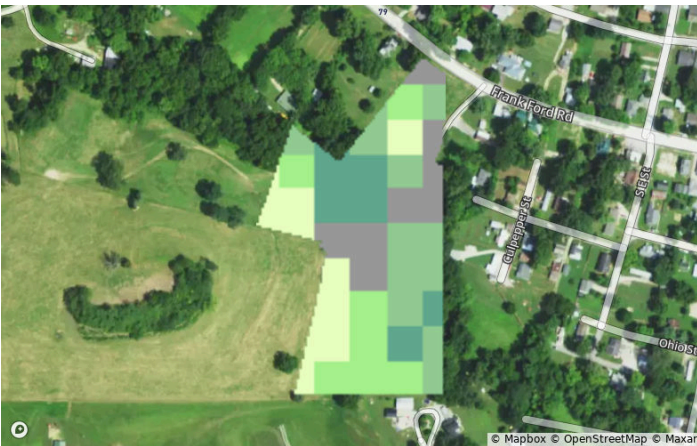
2021



2020



2019



2018



Crop History



Pike, MO • Township: Buffalo • Location: 13-54N-2W

8.60 acres, 1 selection

All Selections



Crop	2023	2022	2021	2020	2019	2018
Grassland/Pasture	47.5%	45.0%	52.5%	25.0%	22.5%	27.5%
Deciduous Forest	25.0%	22.5%	22.5%	30.0%	27.5%	35.0%
Developed/Open Space	12.5%	12.5%	12.5%	10.0%	10.0%	22.5%
Other Hay/Non Alfalfa	7.5%	10.0%	2.5%	20.0%	22.5%	15.0%
Other	7.5%	10.0%	10.0%	15.0%	17.5%	0.0%

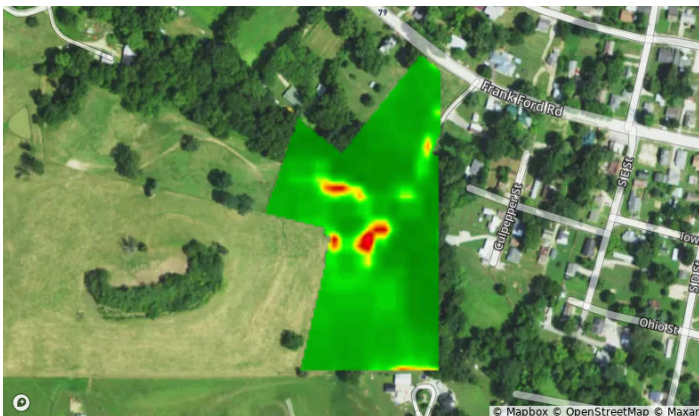
Vegetation Index (NDVI)



Pike, MO • Township: Buffalo • Location: 13-54N-2W

8.60 acres, 1 selection

2024



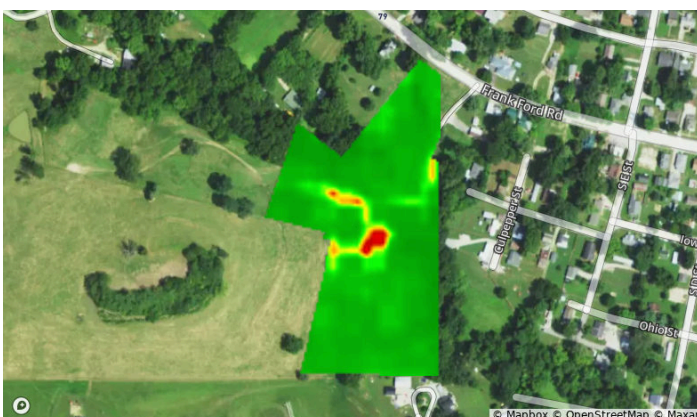
2023



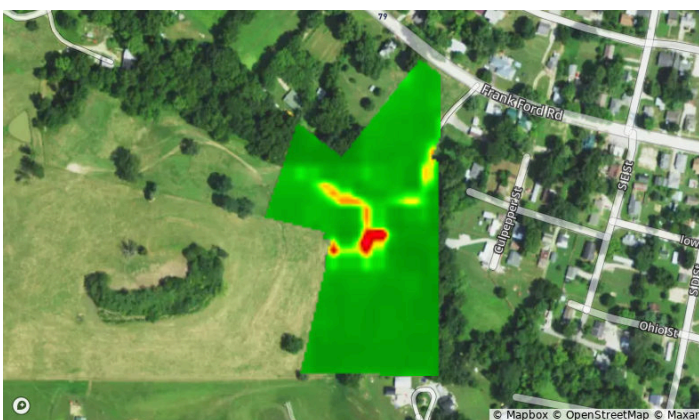
2022



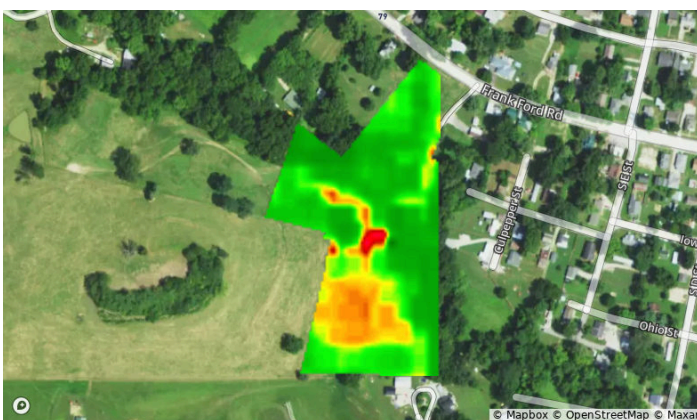
2021



2020



2019



Vegetation Index (NDVI)



Pike, MO • Township: Buffalo • Location: 13-54N-2W

8.60 acres, 1 selection

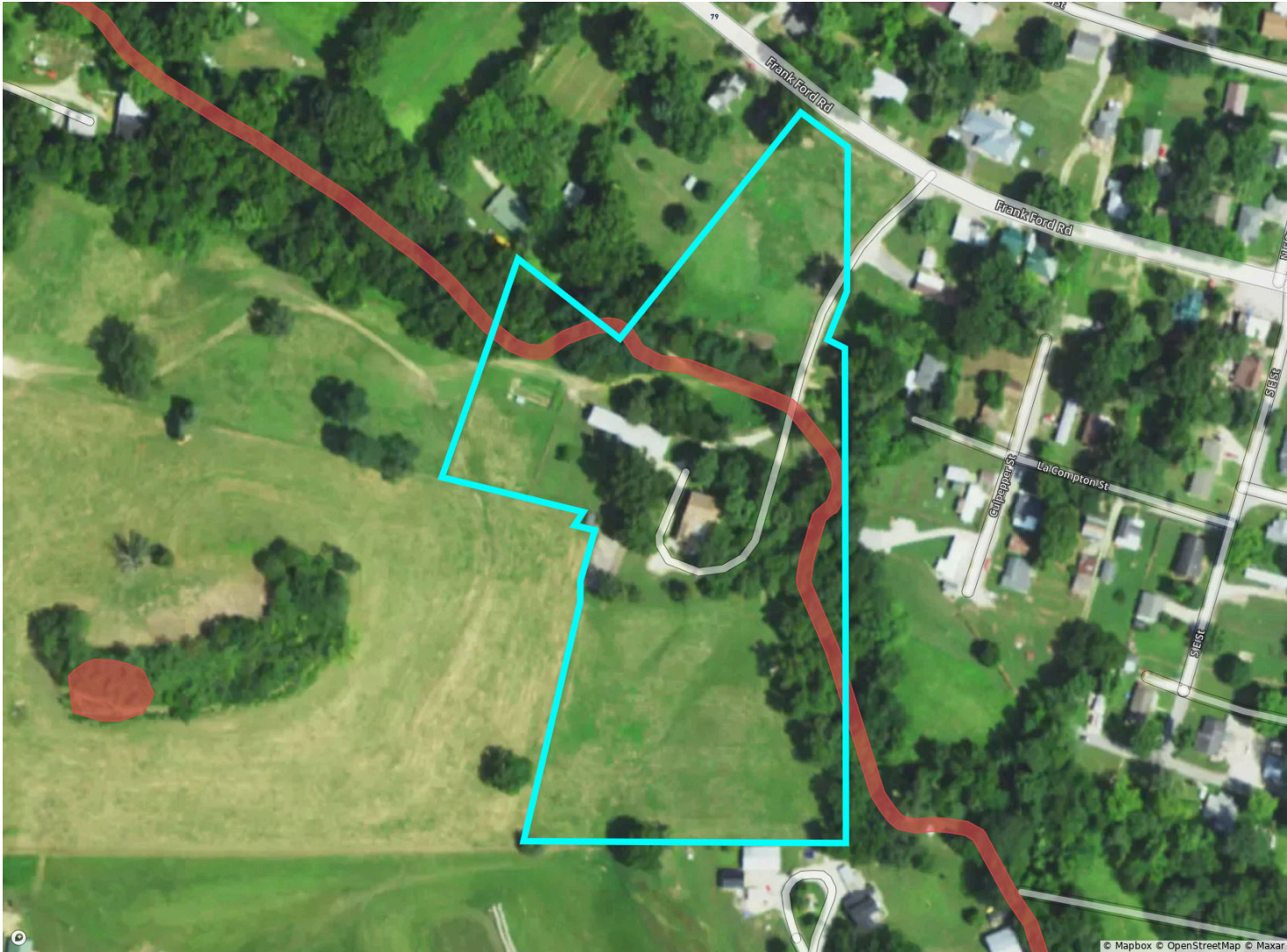
Year	2024	2023	2022	2021	2020	2019
Standard Deviation	5	5	6	4	5	6
Mean	87	85	86	86	87	81
Min	55	51	48	60	53	53
Max	95	92	94	92	94	96

Flood (FEMA Report)



Pike, MO • Township: Buffalo • Location: 13-54N-2W

8.60 acres, 1 selection



Flood Hazard Zone		% of Selection	Acres
<div></div>	100 Year Flood Zone (1% annual chance of flooding)	0.0%	0.0
<div></div>	500 Year Flood Zone (0.2% annual chance of flooding)	0.0%	0.0
<div></div>	Regulatory Floodway	0.0%	0.0
<div></div>	No Flood Hazard Zone	0.0%	0.0
Wetlands		% of Selection	Acres
<div></div>	Assorted Wetlands	4.6%	0.4

FSA Overview



Pike, MO • Township: Buffalo • Location: 13-54N-2W

8.60 acres, 1 selection



CLU		Acres
1		7.25
2		1.05
3		0.30

Historical Imagery



Pike, MO • Township: Buffalo • Location: 13-54N-2W

8.60 acres, 1 selection

2022



2020



2018



2016



2014



2012

