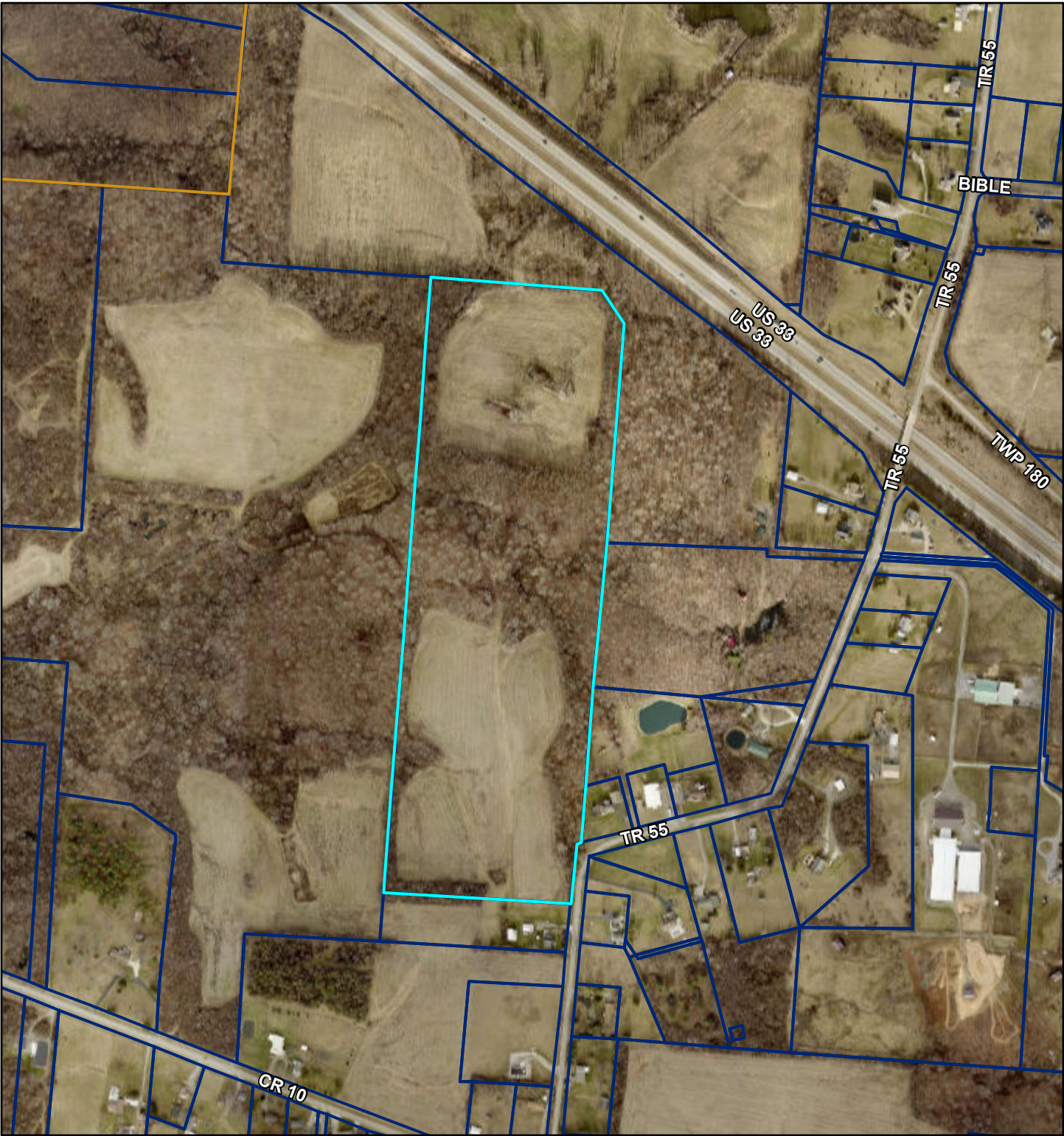
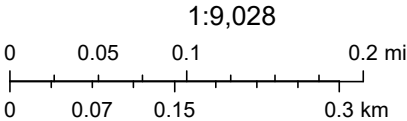


12-093-00-00-052-000 Logan County, Ohio GIS



11/5/2024, 3:08:59 PM

- Incorporated
- Blue: Band_3
- OHLOGA22-SID-3INCH.sid
- VMS/S-T-R
- Red: Band_1
- Logan County Parcels
- Green: Band_2
- Road Centerlines



Esri Community Maps Contributors, © OpenStreetMap, Microsoft, Esri, TomTom, Garmin, SafeGraph, GeoTechnologies, Inc, METI/NASA, USGS, EPA, NPS, US Census Bureau, USDA, USFWS