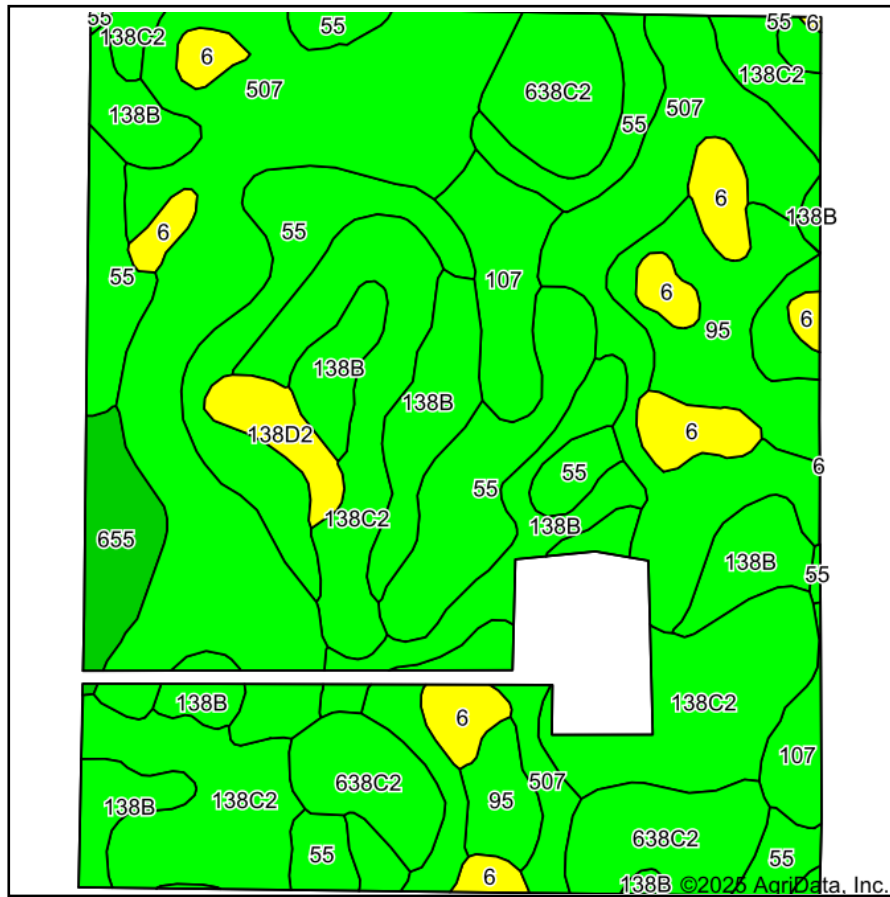
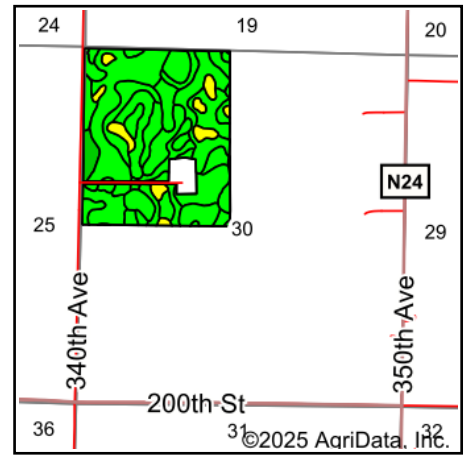


Soils Map



Soils data provided by USDA and NRCS.



State: **Iowa**
 County: **Emmet**
 Location: **30-99N-34W**
 Township: **Estherville**
 Acres: **125.79**
 Date: **5/14/2025**

MIDWEST LAND & REAL ESTATE, INC.
 712-262-3110 MANAGEMENT
 Maps Provided By: **surety**
 CUSTOMIZED ONLINE MAPPING
 © AgriData, Inc. 2023 www.AgriDataInc.com

Area Symbol: IA063, Soil Area Version: 34

Code	Soil Description	Acres	Percent of field	CSR2 Legend	Non-Irr Class *c	CSR2**	CSR
507	Canisteo clay loam, 0 to 2 percent slopes	36.87	29.4%		IIw	84	73
138C2	Clarion loam, 6 to 10 percent slopes, moderately eroded	21.57	17.1%		IIIe	83	59
55	Nicollet clay loam, 1 to 3 percent slopes	19.28	15.3%		Iw	89	82
138B	Clarion loam, 2 to 6 percent slopes	14.98	11.9%		Ile	89	74
638C2	Clarion-Storden complex, 6 to 10 percent slopes, moderately eroded	10.52	8.4%		IIIe	75	53
95	Harps clay loam, 0 to 2 percent slopes	6.98	5.5%		IIw	72	57
6	Okoboji silty clay loam, 0 to 1 percent slopes	6.05	4.8%		IIIw	59	53
107	Webster clay loam, 0 to 2 percent slopes	4.86	3.9%		IIw	86	77
655	Crippin loam, 1 to 3 percent slopes	3.00	2.4%		Ie	91	77
138D2	Clarion loam, 9 to 14 percent slopes, moderately eroded	1.68	1.3%		IIIe	51	50
Weighted Average					2.14	82.4	68.5

**IA has updated the CSR values for each county to CSR2.

*c: Using Capabilities Class Dominant Condition Aggregation Method