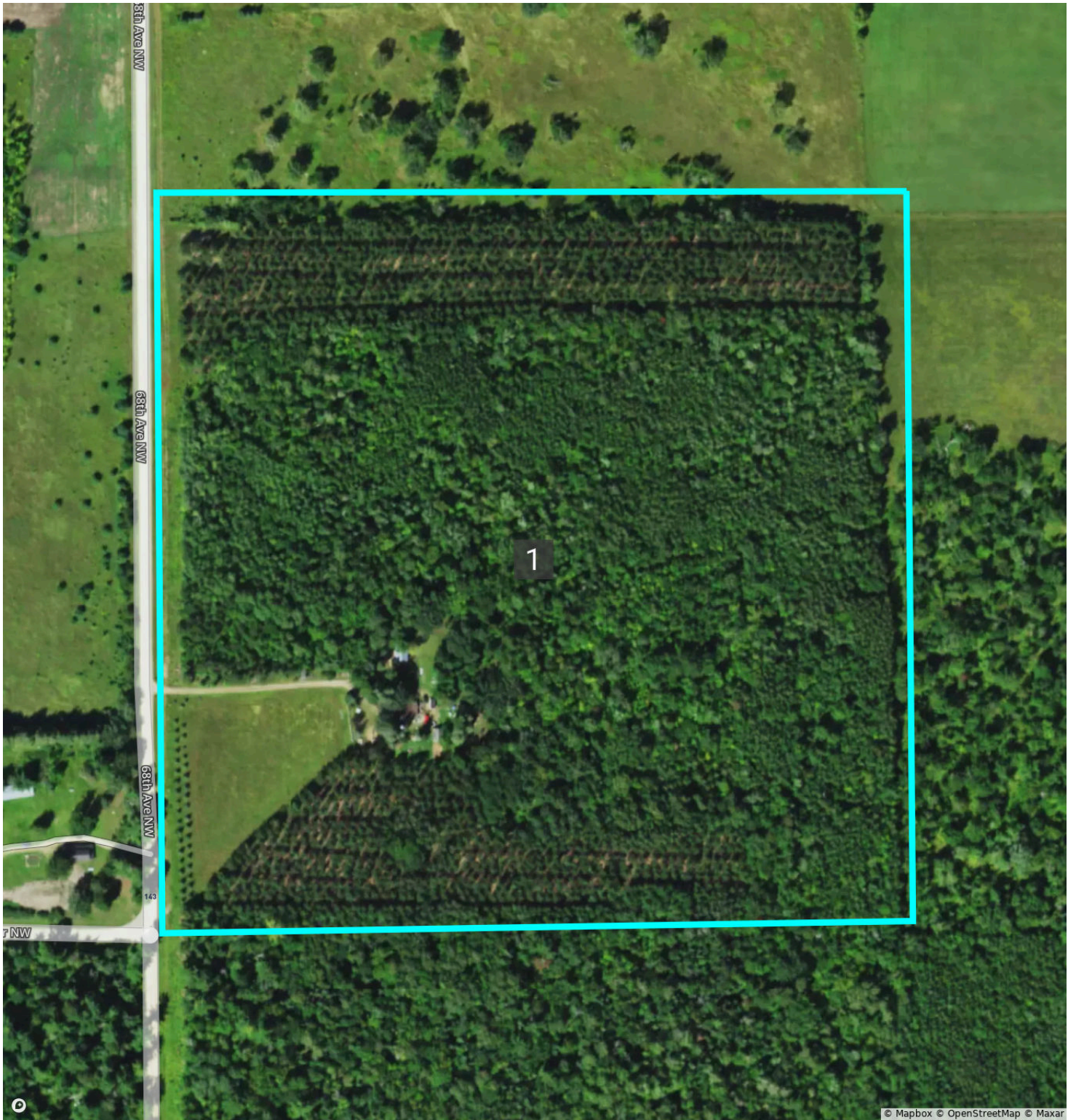


Overview



Cass, MN • Township: Wilkinson • Location: 17-144N-31W

39.88 acres, 1 selection



Overview 39.88 acres, 1 selection



Cass, MN • Township: Wilkinson • Location: 17-144N-31W

Type: Parcel



Acres
39.88

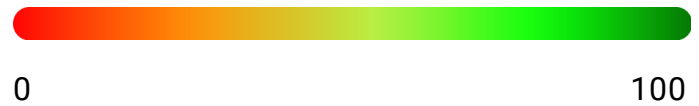
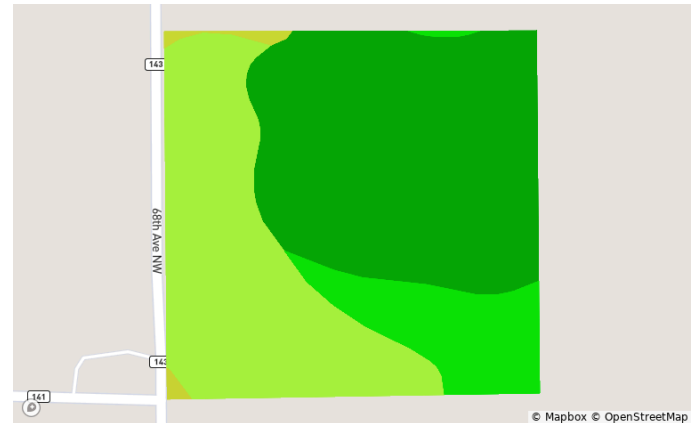
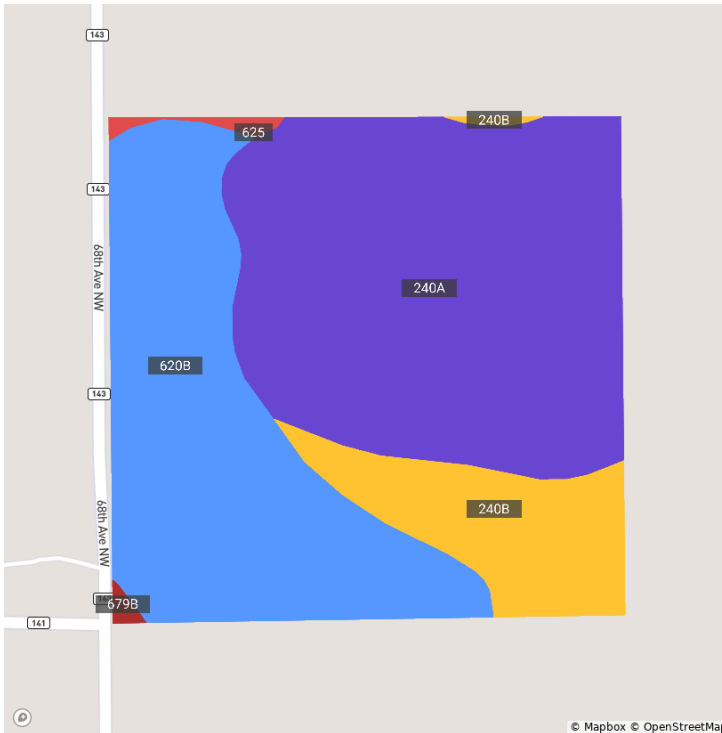
Parcel ID Number
49-017-3300

Soils



Cass, MN • Township: Wilkinson • Location: 17-144N-31W

39.88 acres, 1 selection



Code	Soil Description	Acres	% of Field	Non-IRR Class	IRR Class	CPI
240A	Warba very fine sandy loam, 1 to 3 percent slopes moderately wet	20.0	50.2%	2e	—	93.0
620B	Cutaway loamy sand, 1 to 10 percent slopes	14.3	35.9%	3s	—	56.0
240B	Warba very fine sandy loam, 1 to 8 percent slopes	5.2	13.0%	2e	—	83.0
625	Sandwick loamy sand	0.2	0.6%	3w	—	47.0
679B	Menahga loamy sand, loamy substratum, 2 to 8 percent slopes	0.1	0.3%	4s	—	46.0