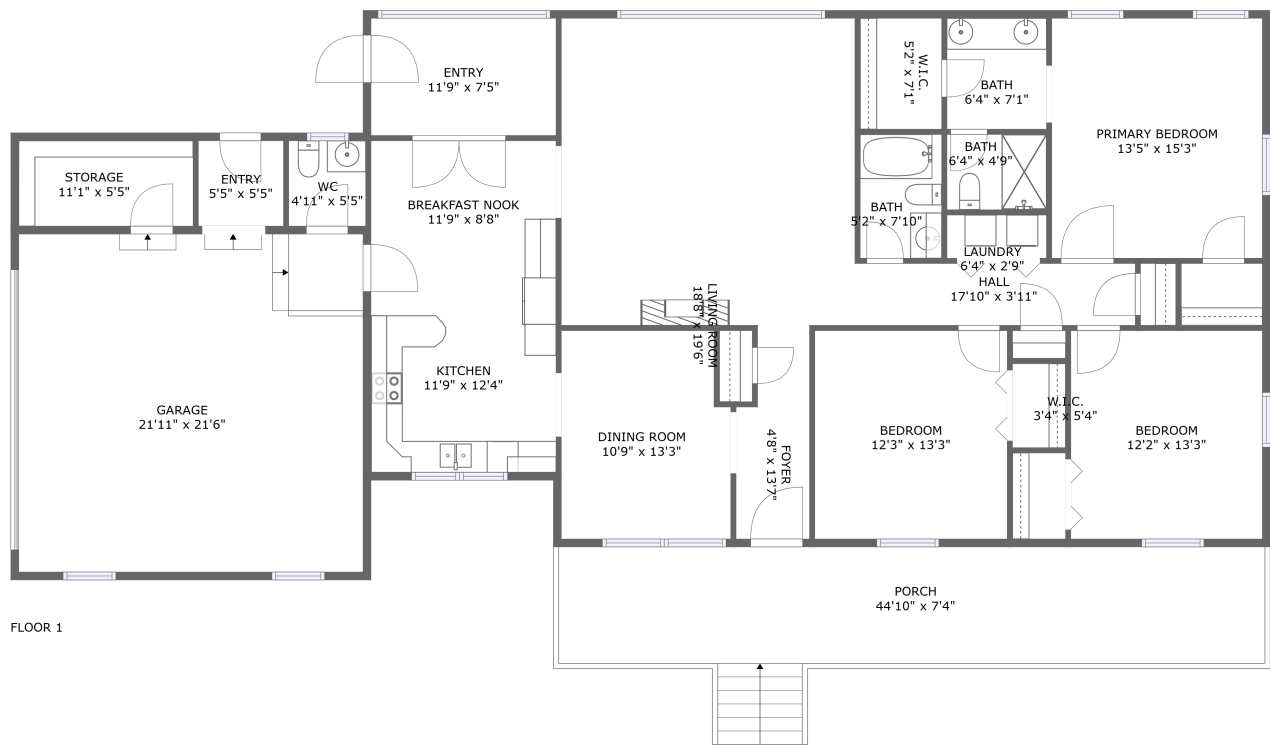




Home report


15120 West Virginia Highway 12, Forest Hill, West Virginia  
24935, United States





Property summary


 **1** Garages


 **3** Bedrooms

 **2** Bathrooms

 **1** Half baths

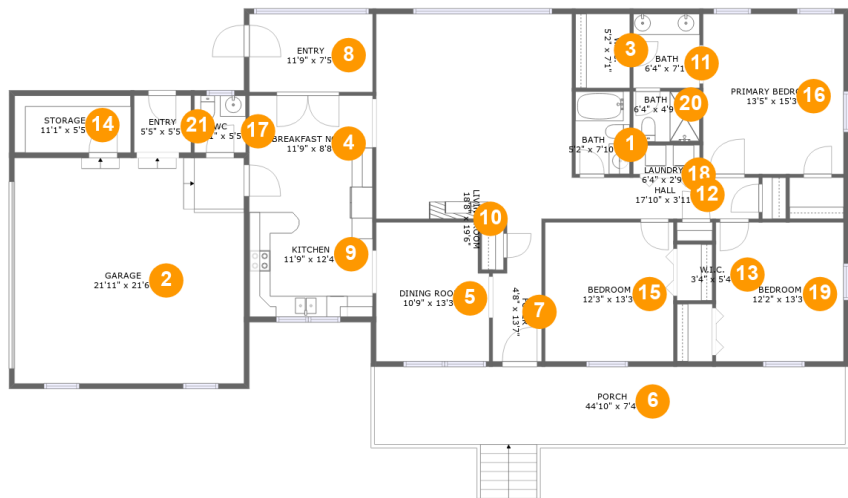
 **1** Floors

 **1,914** Gross living area sqft

 **2,887** Total sqft

Home report

15120 West Virginia Highway 12, Forest Hill, West Virginia  
24935, United States



Room dimensions

Floor 1 Total sqft: 2887 Living area: 1914

#		Dimensions	sqft	Counted as living area
1	Bath	5'2" x 7'10"	41 sq. ft	Yes
2	Garage	21'11" x 21'6"	470 sq. ft	No
3	W.I.C.	5'2" x 7'1"	37 sq. ft	Yes
4	Breakfast Nook	11'9" x 8'8"	103 sq. ft	Yes
5	Dining Room	10'9" x 13'3"	138 sq. ft	Yes
6	Porch	44'10" x 7'4"	332 sq. ft	No
7	Foyer	4'8" x 13'7"	56 sq. ft	Yes
8	Entry	11'9" x 7'5"	88 sq. ft	Yes
9	Kitchen	11'9" x 12'4"	145 sq. ft	Yes
10	Living Room	18'8" x 19'6"	364 sq. ft	Yes
11	Bath	6'4" x 7'1"	45 sq. ft	Yes

## Home report

**15120 West Virginia Highway 12, Forest Hill, West Virginia  
24935, United States**

#		Dimensions	sqft	Counted as living area
12	Hall	17'10" x 3'11"	70 sq. ft	Yes
13	W.I.C.	3'4" x 5'4"	18 sq. ft	Yes
14	Storage	11'1" x 5'5"	60 sq. ft	No
15	Bedroom	12'3" x 13'3"	162 sq. ft	Yes
16	Primary Bedroom	13'5" x 15'3"	204 sq. ft	Yes
17	WC	4'11" x 5'5"	27 sq. ft	No
18	Laundry	6'4" x 2'9"	17 sq. ft	Yes
19	Bedroom	12'2" x 13'3"	161 sq. ft	Yes
20	Bath	6'4" x 4'9"	30 sq. ft	Yes
21	Entry	5'5" x 5'5"	29 sq. ft	No

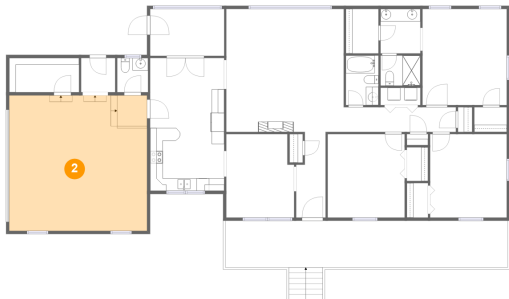
1 Floor 1 - Bath



Dimensions: 5'2" x 7'10"  
Area: 41 sq. ft  
Counted as living area: Yes

Heated: Yes  
Finished: Yes  
Enclosed: Yes  
Contiguous: Yes  
Permitted: Yes  
Wet space: Yes  
Addition: No  
Conversion: No

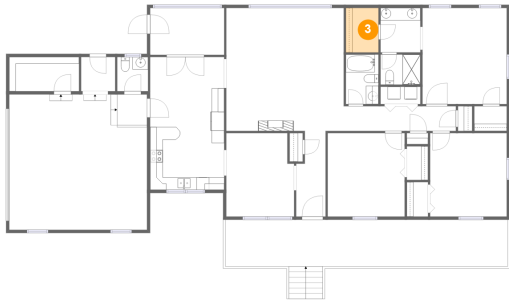
2 Floor 1 - Garage



Dimensions: 21'11" x 21'6"  
Area: 470 sq. ft  
Counted as living area: No

Heated: No  
Finished: No  
Enclosed: Yes  
Contiguous: Yes  
Permitted: Yes  
Wet space: No  
Addition: No  
Conversion: No

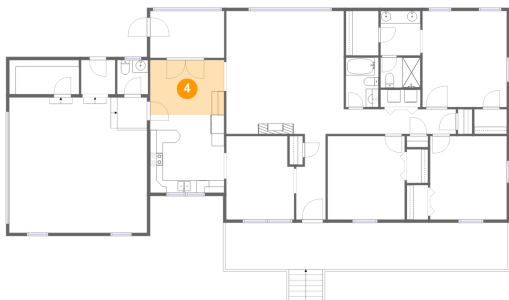
3 Floor 1 - W.I.C.



Dimensions: 5'2" x 7'1"  
Area: 37 sq. ft  
Counted as living area: Yes

Heated: Yes  
Finished: Yes  
Enclosed: Yes  
Contiguous: Yes  
Permitted: Yes  
Wet space: No  
Addition: No  
Conversion: No

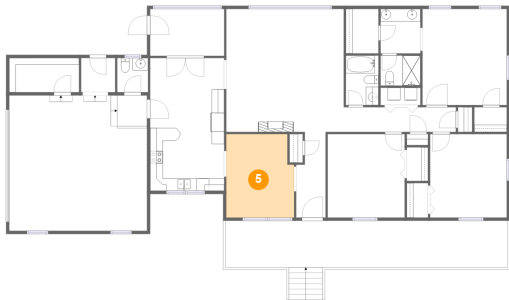
4 Floor 1 - Breakfast Nook



Dimensions: 11'9" x 8'8"  
Area: 103 sq. ft  
Counted as living area: Yes

Heated: Yes  
Finished: Yes  
Enclosed: Yes  
Contiguous: Yes  
Permitted: Yes  
Wet space: No  
Addition: No  
Conversion: No

5 Floor 1 - Dining Room



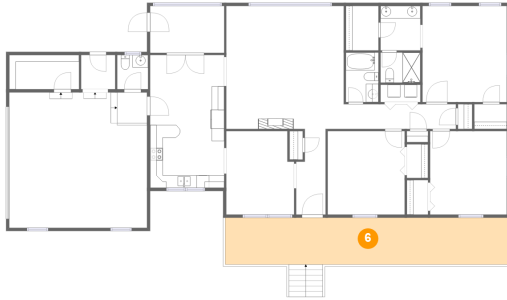
Dimensions: 10'9" x 13'3"  
Area: 138 sq. ft  
Counted as living area: Yes

Heated: Yes  
Finished: Yes  
Enclosed: Yes  
Contiguous: Yes  
Permitted: Yes  
Wet space: No  
Addition: No  
Conversion: No

## Home report

15120 West Virginia Highway 12, Forest Hill, West Virginia  
24935, United States

### 6 Floor 1 - Porch



Dimensions: 44'10" x 7'4"  
Area: 332 sq. ft  
Counted as living area: No

Heated: No  
Finished: Yes  
Enclosed: No  
Contiguous: Yes  
Permitted: Yes  
Wet space: No  
Addition: No  
Conversion: No

### 7 Floor 1 - Foyer



Dimensions: 4'8" x 13'7"  
Area: 56 sq. ft  
Counted as living area: Yes

Heated: Yes  
Finished: Yes  
Enclosed: Yes  
Contiguous: Yes  
Permitted: Yes  
Wet space: No  
Addition: No  
Conversion: No

### 8 Floor 1 - Entry



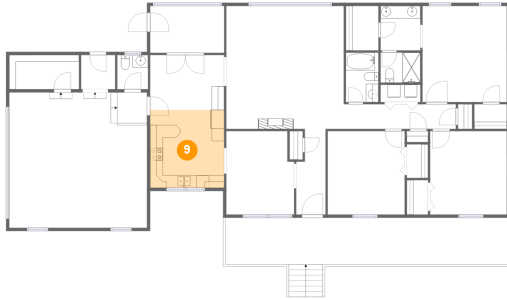
Dimensions: 11'9" x 7'5"  
Area: 88 sq. ft  
Counted as living area: Yes

Heated: Yes  
Finished: Yes  
Enclosed: Yes  
Contiguous: Yes  
Permitted: Yes  
Wet space: No  
Addition: No  
Conversion: No

## Home report

15120 West Virginia Highway 12, Forest Hill, West Virginia  
24935, United States

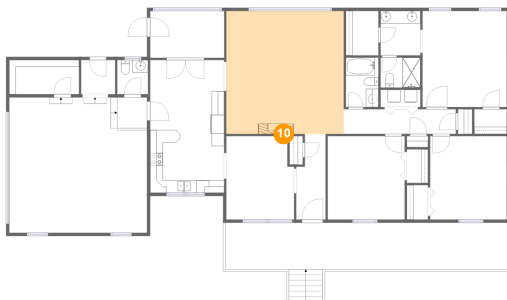
### 9 Floor 1 - Kitchen



Dimensions: 11'9" x 12'4"  
Area: 145 sq. ft  
Counted as living area: Yes

Heated: Yes  
Finished: Yes  
Enclosed: Yes  
Contiguous: Yes  
Permitted: Yes  
Wet space: No  
Addition: No  
Conversion: No

### 10 Floor 1 - Living Room



Dimensions: 18'8" x 19'6"  
Area: 364 sq. ft  
Counted as living area: Yes

Heated: Yes  
Finished: Yes  
Enclosed: Yes  
Contiguous: Yes  
Permitted: Yes  
Wet space: No  
Addition: No  
Conversion: No

### 11 Floor 1 - Bath



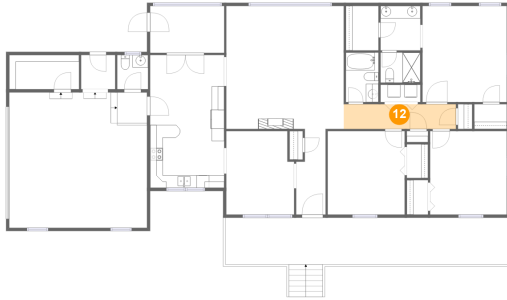
Dimensions: 6'4" x 7'1"  
Area: 45 sq. ft  
Counted as living area: Yes

Heated: Yes  
Finished: Yes  
Enclosed: Yes  
Contiguous: Yes  
Permitted: Yes  
Wet space: Yes  
Addition: No  
Conversion: No

## Home report

15120 West Virginia Highway 12, Forest Hill, West Virginia  
24935, United States

### 12 Floor 1 - Hall



Dimensions: 17'10" x 3'11"  
Area: 70 sq. ft  
Counted as living area: Yes

Heated: Yes  
Finished: Yes  
Enclosed: Yes  
Contiguous: Yes  
Permitted: Yes  
Wet space: No  
Addition: No  
Conversion: No

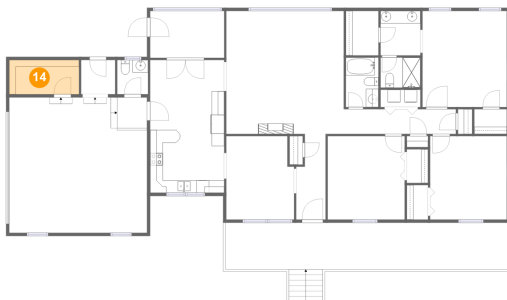
### 13 Floor 1 - W.I.C.



Dimensions: 3'4" x 5'4"  
Area: 18 sq. ft  
Counted as living area: Yes

Heated: Yes  
Finished: Yes  
Enclosed: Yes  
Contiguous: Yes  
Permitted: Yes  
Wet space: No  
Addition: No  
Conversion: No

### 14 Floor 1 - Storage



Dimensions: 11'1" x 5'5"  
Area: 60 sq. ft  
Counted as living area: No

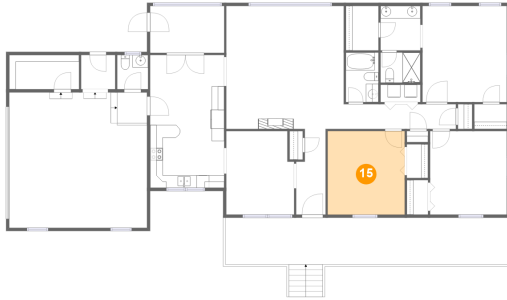
Heated: No  
Finished: No  
Enclosed: No  
Contiguous: Yes  
Permitted: Yes  
Wet space: No  
Addition: No  
Conversion: No



## Home report

15120 West Virginia Highway 12, Forest Hill, West Virginia  
24935, United States

### 15 Floor 1 - Bedroom



Dimensions: 12'3" x 13'3"  
Area: 162 sq. ft  
Counted as living area: Yes

Heated: Yes  
Finished: Yes  
Enclosed: Yes  
Contiguous: Yes  
Permitted: Yes  
Wet space: No  
Addition: No  
Conversion: No

### 16 Floor 1 - Primary Bedroom



Dimensions: 13'5" x 15'3"  
Area: 204 sq. ft  
Counted as living area: Yes

Heated: Yes  
Finished: Yes  
Enclosed: Yes  
Contiguous: Yes  
Permitted: Yes  
Wet space: No  
Addition: No  
Conversion: No

### 17 Floor 1 - WC



Dimensions: 4'11" x 5'5"  
Area: 27 sq. ft  
Counted as living area: No

Heated: Yes  
Finished: Yes  
Enclosed: Yes  
Contiguous: No  
Permitted: Yes  
Wet space: Yes  
Addition: No  
Conversion: No

## Home report

15120 West Virginia Highway 12, Forest Hill, West Virginia  
24935, United States

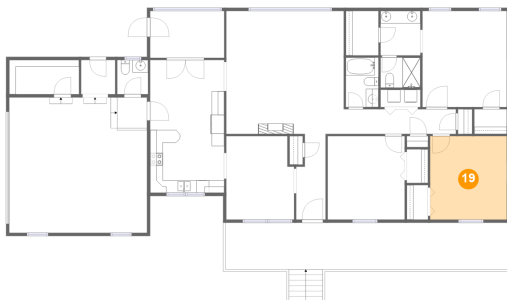
### 18 Floor 1 - Laundry



Dimensions: 6'4" x 2'9"  
Area: 17 sq. ft  
Counted as living area: Yes

Heated: Yes  
Finished: Yes  
Enclosed: Yes  
Contiguous: Yes  
Permitted: Yes  
Wet space: No  
Addition: No  
Conversion: No

### 19 Floor 1 - Bedroom



Dimensions: 12'2" x 13'3"  
Area: 161 sq. ft  
Counted as living area: Yes

Heated: Yes  
Finished: Yes  
Enclosed: Yes  
Contiguous: Yes  
Permitted: Yes  
Wet space: No  
Addition: No  
Conversion: No

### 20 Floor 1 - Bath



Dimensions: 6'4" x 4'9"  
Area: 30 sq. ft  
Counted as living area: Yes

Heated: Yes  
Finished: Yes  
Enclosed: Yes  
Contiguous: Yes  
Permitted: Yes  
Wet space: Yes  
Addition: No  
Conversion: No

Home report

15120 West Virginia Highway 12, Forest Hill, West Virginia  
24935, United States

## 21 Floor 1 - Entry



Dimensions: 5'5" x 5'5"

Area: 29 sq. ft

Counted as living area: No

Heated: Yes

Finished: Yes

Enclosed: Yes

Contiguous: No

Permitted: Yes

Wet space: No

Addition: No

Conversion: No