



SMALLTOWN
HUNTING PROPERTIES
& REAL ESTATESM

124 WESTERLY PLACE
MADISON COUNTY, MS
\$347,000



OFFICE (769) 888-2522 | WWW.SMALLTOWNPROPERTIES.COM

124 WESTERLY PLACE

PROPERTY PROFILE

LOCATION:

- 124 Westerly Place
Madison, MS 39110
- Madison County
- 6.9± Miles NW from
Madison the City
- 3.9± Miles West of Gluckstadt

COORDINATES:

- 32.5238, -90.1562

TAX INFORMATION:

- Parcel # 081F-24-553-00-00
- 2024 Taxes: \$1,855.97

PROPERTY USE:

- Residential

PROPERTY INFORMATION:

- 1,860± SqFt Home
- 3 Bedrooms/2 Baths
- Large Living Room
- Gas Fireplace
- Spacious Kitchen
- Stainless Steel Appliances,
Lots of Cabinets
- Breakfast Bar & Eat-In
Dining Area
- Primary Suite with
a Grand Walk-In Closet
- Separate Office Area
- Two-Car Garage
- Fenced-In Backyard



ADAM HESTER, ALC | ASSOCIATE BROKER
C: 601-506-5058 | adam@smalltownproperties.com

RACHEL BOYD | RESIDENTIAL SPECIALIST
C: 913-212-8419 | rachel@smalltownproperties.com

4848 Main St. - Flora, MS 39071 | O: 769-888-2522 | smalltownproperties.com

Information is believed to be accurate but not guaranteed.

WELCOME TO 124 WESTERLY PLACE

WELCOME TO 124 WESTERLY PLACE IN THE DESIRABLE FIELDSTONE SUBDIVISION IN MADISON, MS! This beautifully maintained home, built in 2015, offers three bedrooms, two baths, and 1,860± square feet of comfortable, functional living space.

Step inside to find an inviting living room that includes a gas fireplace and an additional sitting area, perfect for a cozy reading nook or easily converted into a formal dining area. The spacious kitchen is a chef's dream, featuring granite countertops, ample cabinet storage, a gas range with a decorative vent hood, stainless steel appliances, a breakfast bar, and an eat-in dining area.



ADAM HESTER, ALC | ASSOCIATE BROKER
C: 601-506-5058 | adam@smalltownproperties.com



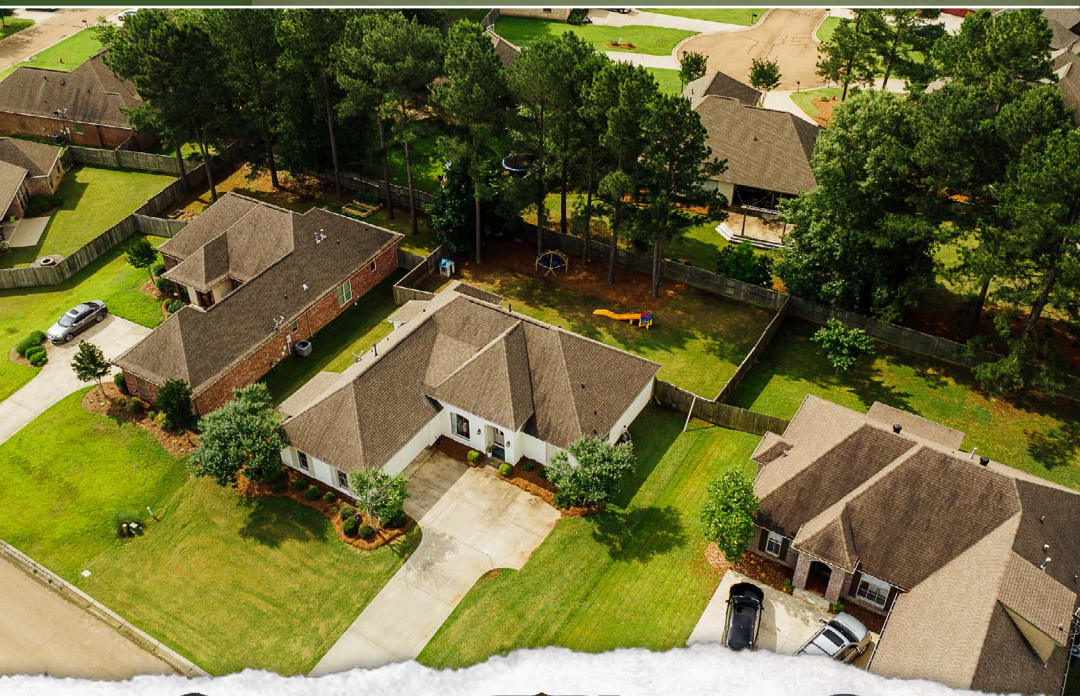
RACHEL BOYD | RESIDENTIAL SPECIALIST
C: 913-212-8419 | rachel@smalltownproperties.com

MORE ABOUT 124 WESTERLY PLACE

The Madison County home also features a dedicated office with built-in cabinetry, ideal for remote work or homework zones. The laundry room includes a convenient sink and extra storage. Step away to your luxurious primary suite, which includes a large walk-in closet with built-ins, an en-suite bath offering double vanities, a relaxing jetted tub, and a separate shower. The two additional bedrooms and full bath are located on the opposite side of the home for added privacy.

Outside, you will enjoy the fully fenced backyard, perfect for entertaining with plenty of space for grilling, outdoor dining, or gathering around a firepit. The home is conveniently located just minutes from shopping, restaurants, all of Madison's top amenities, and I-55.

If you've been looking for a move-in-ready home, call Rachel Boyd or Adam Hester today to schedule your private tour!



ADAM HESTER, ALC | ASSOCIATE BROKER
C: 601-506-5058 | adam@smalltownproperties.com

RACHEL BOYD | RESIDENTIAL SPECIALIST
C: 913-212-8419 | rachel@smalltownproperties.com

4848 Main St. - Flora, MS 39071 | O: 769-888-2522 | smalltownproperties.com

Information is believed to be accurate but not guaranteed.



ADAM HESTER, ALC | ASSOCIATE BROKER
C: 601-506-5058 | adam@smalltownproperties.com

RACHEL BOYD | RESIDENTIAL SPECIALIST
C: 913-212-8419 | rachel@smalltownproperties.com

4848 Main St. - Flora, MS 39071 | O: 769-888-2522 | smalltownproperties.com

Information is believed to be accurate but not guaranteed.

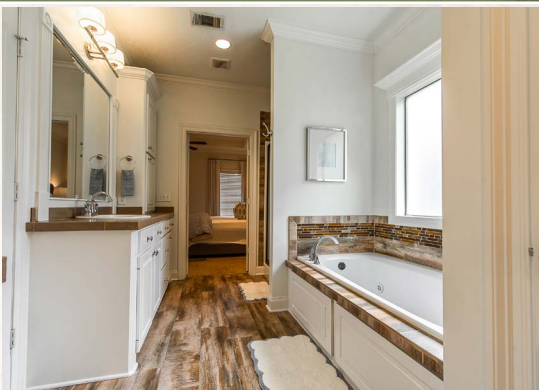


ADAM HESTER, ALC | ASSOCIATE BROKER
C: 601-506-5058 | adam@smalltownproperties.com

RACHEL BOYD | RESIDENTIAL SPECIALIST
C: 913-212-8419 | rachel@smalltownproperties.com

4848 Main St. - Flora, MS 39071 | O: 769-888-2522 | smalltownproperties.com

Information is believed to be accurate but not guaranteed.



SMALLTOWN
HUNTING PROPERTIES
& REAL ESTATESM

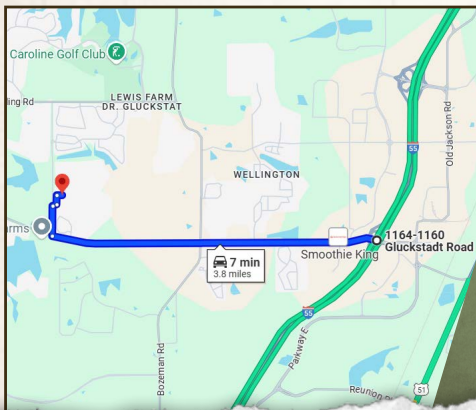


RACHEL BOYD | RESIDENTIAL SPECIALIST
C: 913-212-8419 | rachel@smalltownproperties.com

ADAM HESTER, ALC | ASSOCIATE BROKER
C: 601-506-5058 | adam@smalltownproperties.com

4848 Main St. - Flora, MS 39071 | O: 769-888-2522 | smalltownproperties.com

Information is believed to be accurate but not guaranteed.

124 WESTERLY PLACE**MADISON COUNTY, MISSISSIPPI****land id. LINK**

Directions from I-55 in Gluckstadt, MS: Travel 3.3 miles west on Gluckstadt Road. Turn right on Dewees Road and continue 0.3 miles. Turn right on Fieldstone Lane and then take the first left on toward Westerly Place. Continue onto Westerly Place to the property on the right. 124 Westerly Place, Madison, MS 39110

LINK TO GOOGLE MAP DIRECTIONS

ADAM HESTER, ALC | ASSOCIATE BROKER
C: 601-506-5058 | adam@smalltownproperties.com



SMALLTOWN
HUNTING PROPERTIES
& REAL ESTATESM



RACHEL BOYD | RESIDENTIAL SPECIALIST
C: 913-212-8419 | rachel@smalltownproperties.com