



# SPRING 2025 AUCTION

*No Hidden Reserves or Starting Bids!*

**Four Timber Tracts with Well-Stocked 31 to 35 year old  
and 4.6 million board feet of Douglas-fir**

*Douglas and Curry Counties, Oregon*



- Proximity to log markets in Eugene, Cottage Grove, Roseburg, Dillard, Riddle, Glendale, Rogue City, Medford, North Bend, Coquille and Brookings
- Tracts from 43 to 322± acres. One with homesite approval near Eugene
- Prices start at \$1,240 per acre

*Broker Cooperation Invited*

**SEALED BIDS DUE JUNE 25, 2025**

**Color Catalog #2502 and Bid Packages #5 through #8**

**1-800-845-3524**



Auction Conducted By:

**Realty Marketing/Northwest**

2310 NW Everett St. Suite 250, Portland, Oregon 97210

Washington Auction License #1917





# SPRING 2025 AUCTION

*No Hidden Reserves or Starting Bids!*

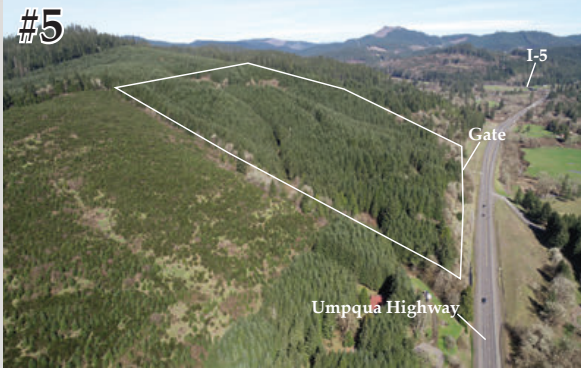


**GreenGold Timberland in Douglas and Curry Counties, Oregon. Well-stocked 31-35 Year Old and 4.6 Million Board Feet of Douglas-Fir. Prices start at less than \$1,250 per Acre!**



## Douglas County – Strategic Location to Competitive Log Markets from Eugene to Medford

#5



43± acre Umpqua Highway Timber Tract near I-5. 36± acres of 31 year old Douglas-fir and Conditional Use Approval for home. \$315,000 / \$7,325 per acre



T21S, R5W  
Section 25

#6



194± acre Tiller Trail Tree Farm. 35 minutes from I-5/Canyonville with 346± MBF and 79 acres of 35 year old Douglas-fir. South Umpqua River Frontage, meadow, and potential homesite. \$700,000 / \$3,608 per acre



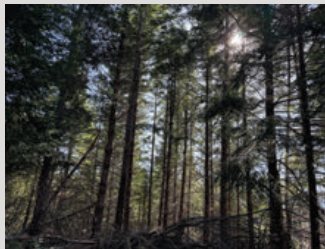
T30S, R2W  
Sections 29 and 30

## Curry County – Proximity to South Oregon Coast Log Markets

#7



322± acre Silver Creek Timber Tract adjacent to Manulife Tree Farm, north of Rogue River. 2,240± MBF of 50 to 60 year old Douglas-fir. \$585,500 / \$1,818 per acre



T35S, R13W  
Sections 14 and 15

#8



320± acre Fritsche Recreation and Timber Tract within Rogue River-Siskiyou National Forest, south of Rogue River. 2,381± MBF of 41 to 50 year old Douglas-fir. \$397,000 / \$1,240 per acre



T36S, R13W  
Sections 13 and 24

**1-800-845-3524**

**SEALED BIDS DUE JUNE 25, 2025**

Auction Conducted By:

**Realty Marketing/Northwest**

Washington Auction License #1917

2310 NW Everett St. Suite 250, Portland, Oregon 97210