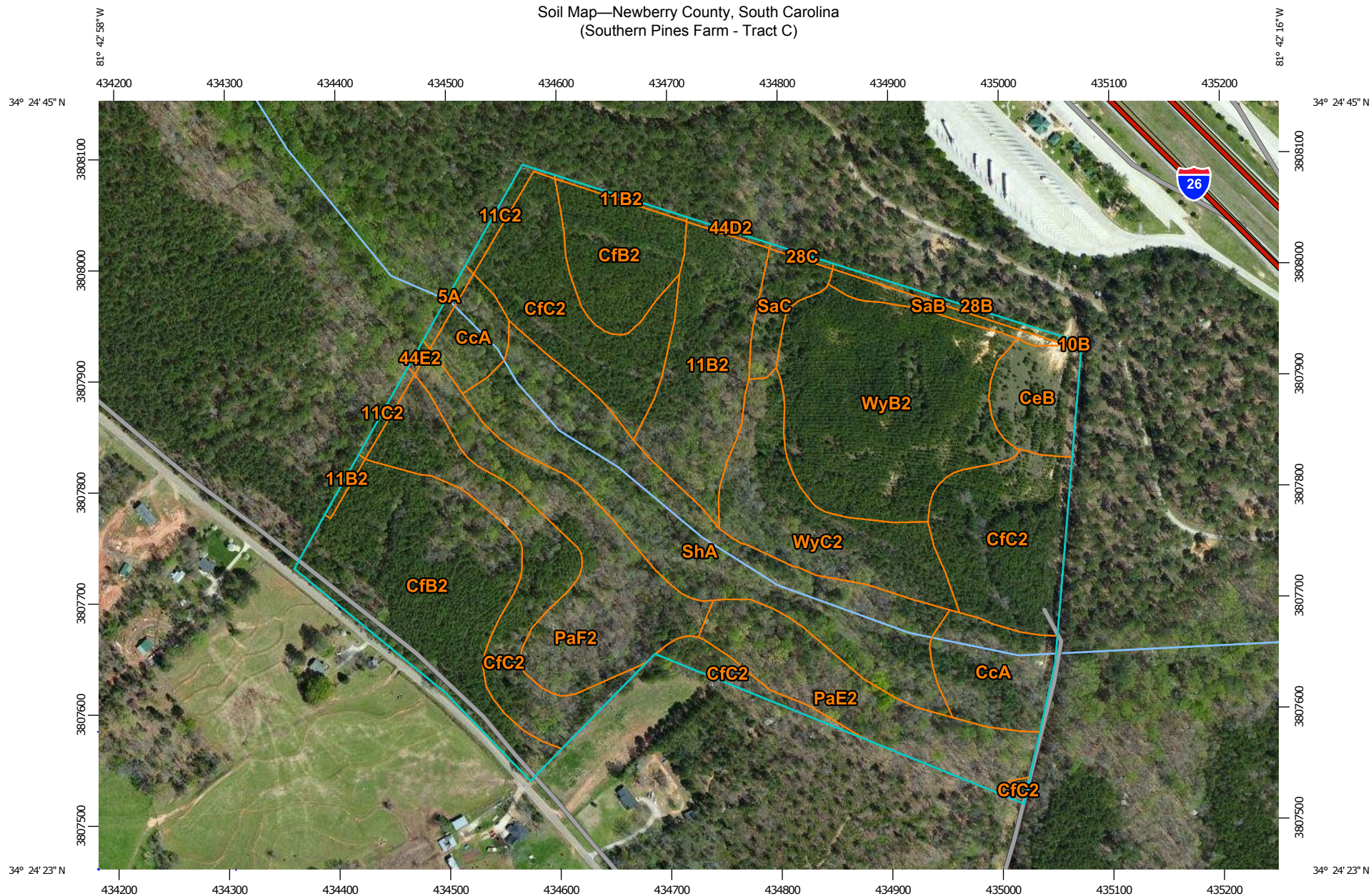


Soil Map—Newberry County, South Carolina  
(Southern Pines Farm - Tract C)



Map Scale: 1:4,880 if printed on A landscape (11" x 8.5") sheet.

0 50 100 200 300 Meters

0 200 400 800 1200 Feet

Map projection: Web Mercator Corner coordinates: WGS84 Edge tics: UTM Zone 17N WGS84



Natural Resources  
Conservation Service

Web Soil Survey  
National Cooperative Soil Survey

12/9/2014  
Page 1 of 4

Soil Map—Newberry County, South Carolina  
(Southern Pines Farm - Tract C)

## MAP LEGEND

### Area of Interest (AOI)

 Area of Interest (AOI)

### Soils

 Soil Map Unit Polygons

 Soil Map Unit Lines

 Soil Map Unit Points

### Special Point Features



Blowout



Borrow Pit



Clay Spot



Closed Depression



Gravel Pit



Gravelly Spot



Landfill



Lava Flow



Marsh or swamp



Mine or Quarry



Miscellaneous Water



Perennial Water



Rock Outcrop



Saline Spot



Sandy Spot



Severely Eroded Spot



Sinkhole



Slide or Slip



Sodic Spot



Spoil Area



Stony Spot



Very Stony Spot



Wet Spot



Other



Special Line Features

### Water Features



Streams and Canals

### Transportation



Rails



Interstate Highways



US Routes



Major Roads



Local Roads

### Background



Aerial Photography

## MAP INFORMATION

The soil surveys that comprise your AOI were mapped at 1:24,000.

Warning: Soil Map may not be valid at this scale.

Enlargement of maps beyond the scale of mapping can cause misunderstanding of the detail of mapping and accuracy of soil line placement. The maps do not show the small areas of contrasting soils that could have been shown at a more detailed scale.

Please rely on the bar scale on each map sheet for map measurements.

Source of Map: Natural Resources Conservation Service  
Web Soil Survey URL: <http://websoilsurvey.nrcs.usda.gov>  
Coordinate System: Web Mercator (EPSG:3857)

Maps from the Web Soil Survey are based on the Web Mercator projection, which preserves direction and shape but distorts distance and area. A projection that preserves area, such as the Albers equal-area conic projection, should be used if more accurate calculations of distance or area are required.

This product is generated from the USDA-NRCS certified data as of the version date(s) listed below.

Soil Survey Area: Newberry County, South Carolina  
Survey Area Data: Version 13, Sep 20, 2014

Soil map units are labeled (as space allows) for map scales 1:50,000 or larger.

Date(s) aerial images were photographed: Feb 26, 2010—Apr 3, 2011

The orthophoto or other base map on which the soil lines were compiled and digitized probably differs from the background imagery displayed on these maps. As a result, some minor shifting of map unit boundaries may be evident.



## Map Unit Legend

Newberry County, South Carolina (SC071)			
Map Unit Symbol	Map Unit Name	Acres in AOI	Percent of AOI
5A	Cartecay sandy loam, 0 to 2 percent slopes, occasionally flooded	0.2	0.3%
10B	Cecil sandy loam, 2 to 7 percent slopes	0.0	0.0%
11B2	Cecil sandy clay loam, 2 to 7 percent slopes, moderately eroded	4.6	7.0%
11C2	Cecil sandy clay loam, 7 to 15 percent slopes, moderately eroded	0.5	0.7%
28B	Santuc loamy coarse sand, 2 to 7 percent slopes	0.3	0.5%
28C	Santuc loamy coarse sand, 7 to 15 percent slopes	0.1	0.1%
44D2	Pacolet sandy clay loam, 15 to 25 percent slopes, moderately eroded	0.1	0.1%
44E2	Pacolet sandy clay loam, 25 to 50 percent slopes, moderately eroded	0.1	0.1%
CcA	Cartecay sandy loam, 0 to 2 percent slopes, frequently flooded	3.4	5.2%
CeB	Cecil sandy loam, 2 to 6 percent slopes	1.8	2.7%
CfB2	Cecil sandy clay loam, 2 to 6 percent slopes, moderately eroded	9.9	15.0%
CfC2	Cecil sandy clay loam, 6 to 10 percent slopes, moderately eroded	13.2	20.0%
PaE2	Pacolet sandy clay loam, 15 to 25 percent slopes, moderately eroded	4.1	6.2%
PaF2	Pacolet sandy clay loam, 25 to 50 percent slopes, moderately eroded	5.3	8.0%
SaB	Santuc loamy coarse sand, 2 to 6 percent slopes	0.6	0.9%
SaC	Santuc loamy coarse sand, 6 to 10 percent slopes	1.0	1.5%
ShA	Shellbluff silty clay loam, 0 to 2 percent slopes, frequently flooded	8.4	12.7%

Newberry County, South Carolina (SC071)			
Map Unit Symbol	Map Unit Name	Acres in AOI	Percent of AOI
WyB2	Wynott-Winnsboro complex, 2 to 6 percent slopes, moderately eroded	8.4	12.7%
WyC2	Wynott-Winnsboro complex, 6 to 10 percent slopes, moderately eroded	4.2	6.4%
<b>Totals for Area of Interest</b>		<b>66.1</b>	<b>100.0%</b>