



FOR SALE

±6.51-±19.94 Acre Residential Home Sites in Union, SC

Parcel Overview

Elford Grove Road
Jonesville, SC 29353



Executive Summary

Elford Grove Road

REEDY

Property Highlights

- Mixture of pines and hardwoods
- Creek
- Rolling topography
- Unrestricted
- Close to town

Location Highlights

- ±15 min to Union
- ±25 min to Gaffney
- ±30 min to Spartanburg
- ±55 min to Rock Hill
- ±60 min to Greenville

Offering Summary

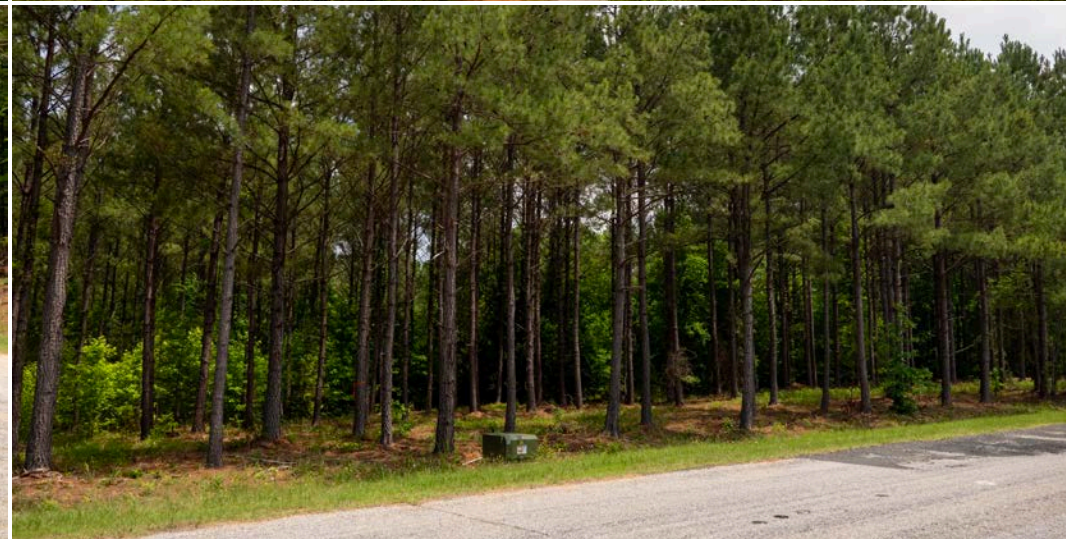
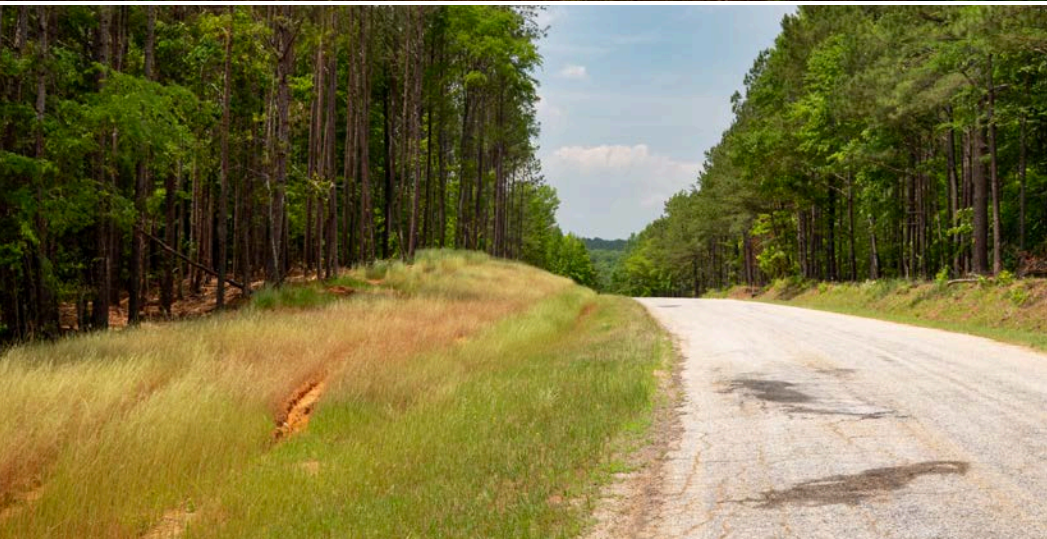
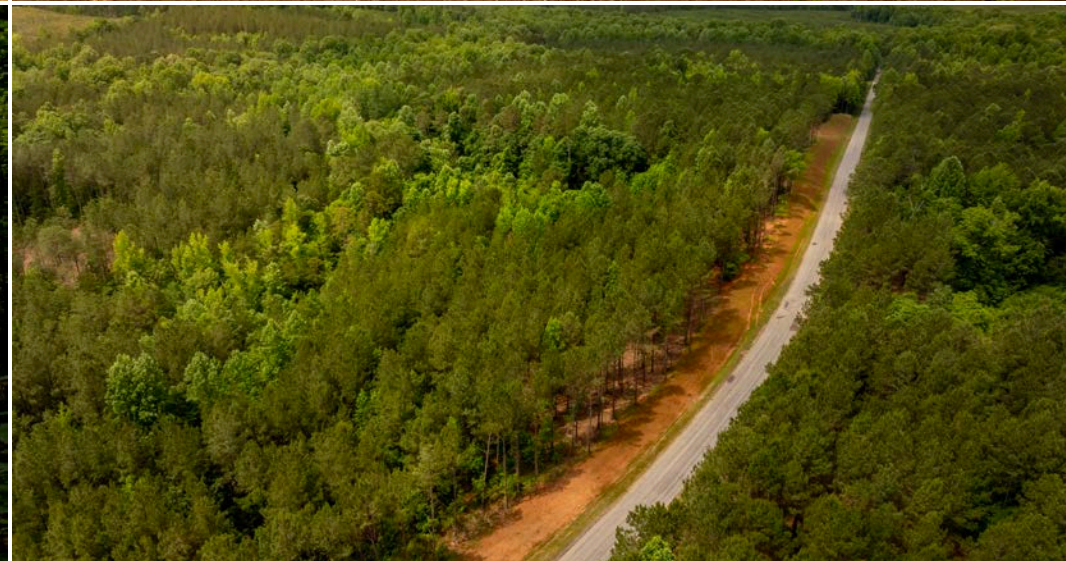
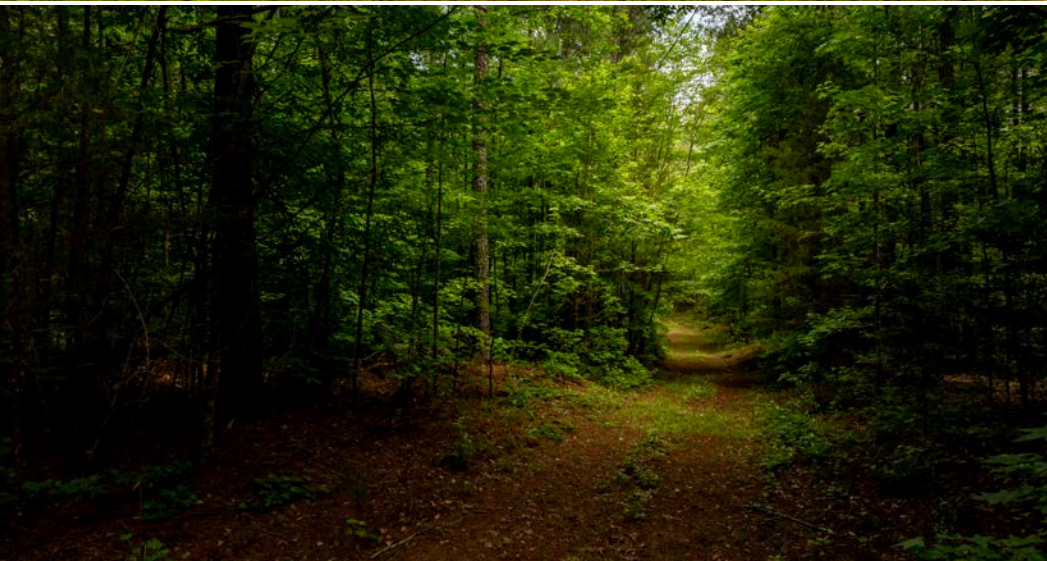
Lot 1:	±19.94 Acres \$185,000
Lot 2:	±11.29 Acres \$105,000
Lot 3:	±7.76 Acres SOLD
Lot 4:	±7.66 Acres \$77,000
Lot 5:	±6.51 Acres SOLD
Lot 6:	±13.49 Acres \$125,000
Lot 7:	±8.81 Acres \$89,000
Lot 8:	±8.81 Acres SOLD
Lot 9:	±10.11 Acres \$105,000
Lot 10:	±7.05 Acres SOLD
Lot 11:	±7.05 Acres SOLD

Acreage, taxes, utilities and lot dimensions to be verified by Buyer and/or Buyers agent



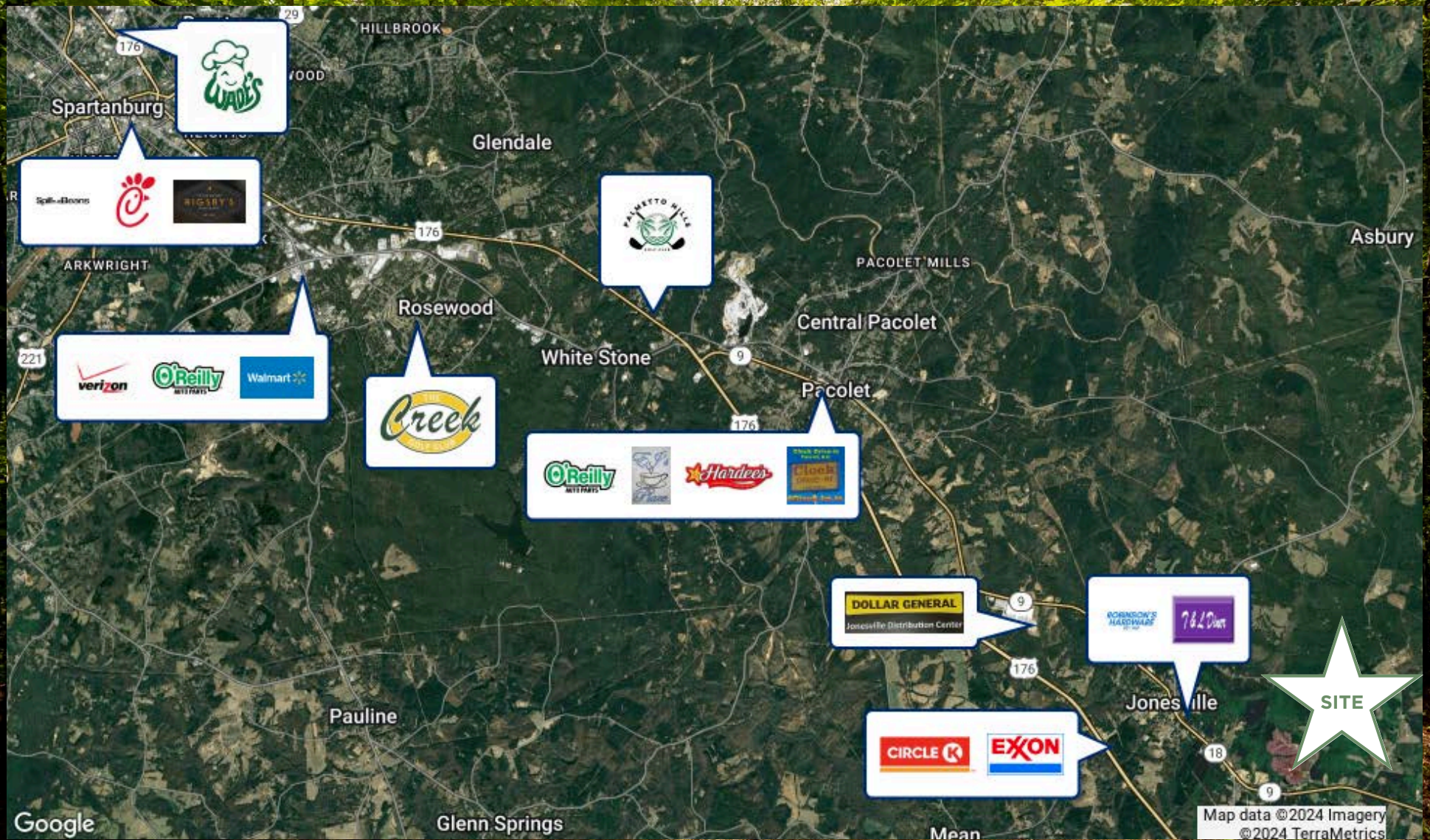
Property Photos

Elford Grove



Local Amenities & Retailers

Jonesville, SC



Contact Information

Reedy Land Co

REEDY

Anderson Drake

865.546.0342

adrake@reedypg.com



Josh Hester

336.567.7186

jhester@reedypg.com

