

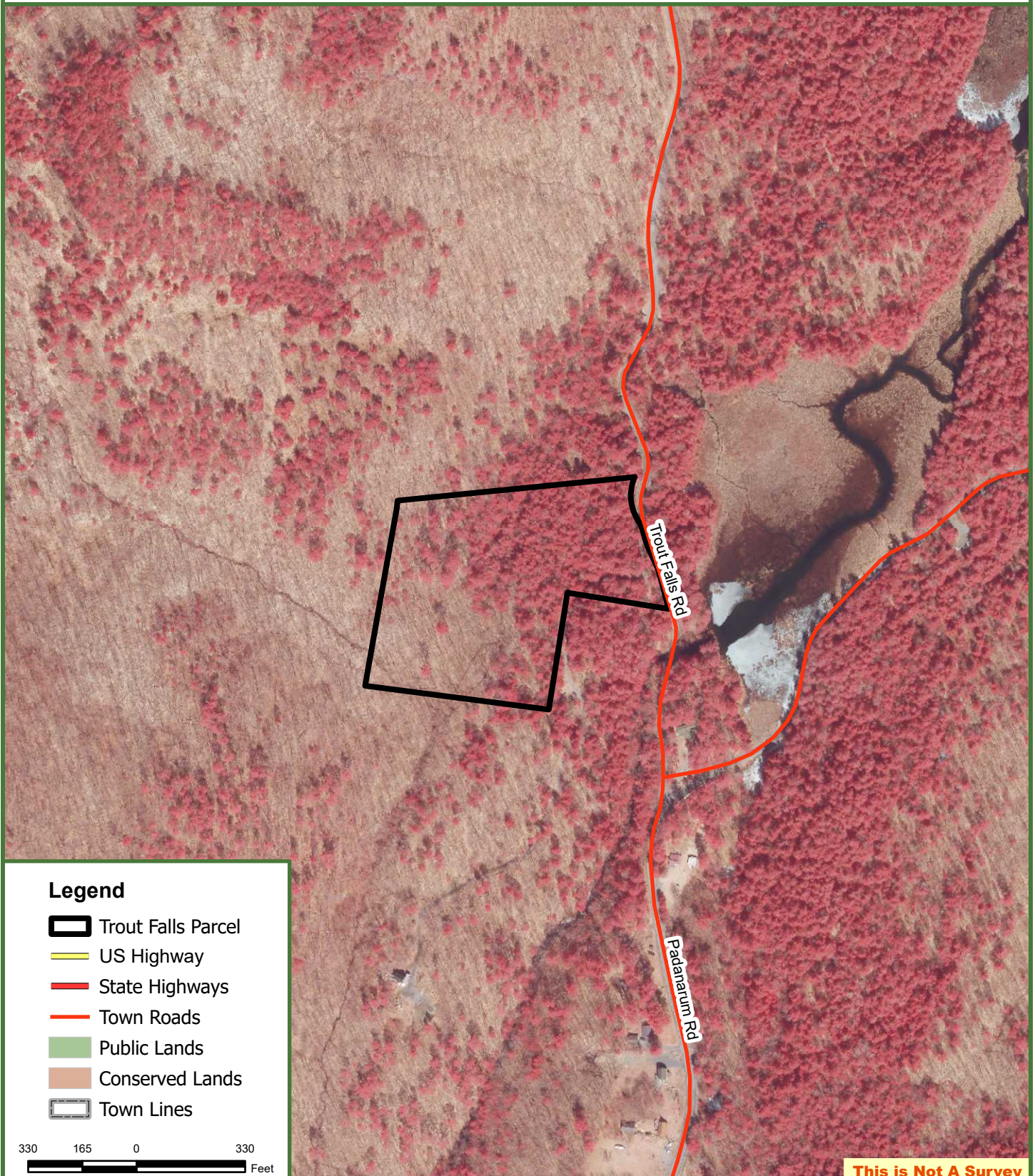


# Trout Falls Parcel

9.82 Tax Acres  
Bolton, Warren County, New York



**Fountains  
Land**  
AN F&W COMPANY



Map produced from the best available information including town tax maps, hand held GPS data, aerial photography and reference information obtained from publicly available GIS sources, and the owner. Boundary lines portrayed on this map are approximate and could be different than the actual location of boundaries found in the field.