



**FARM & RANCH**

# **19+ ACRE TRACT WITH MULTIPLE POTENTIAL HOMESITES**

**TBD Ellis Road – Weatherford, TX**



**STEPHEN  
REICH GROUP**  
WILLIAMS TREW REAL ESTATE

**Williamstrew**   
A DIVISION OF EBBY HALLIDAY REAL ESTATE, INC.

LISTED BY **STEPHEN REICH GROUP** OF WILLIAMS TREW REAL ESTATE



# PROPERTY SUMMARY

## DESCRIPTION

This rare 19+ acre property offers a prime opportunity to own a private slice of Texas just minutes from Weatherford. Featuring multiple potential homesites, this stunning tract is graced with mature live oaks, hardwoods, and breathtaking views that provide a serene and secluded retreat. With a water well and electricity already in place, you can start enjoying the property right away. There are no restrictions on housing type, so you can live in an RV or mobile home now while planning and building your dream home in the future. Please note, the property cannot be subdivided, and commercial use is not permitted. While RVs and mobile homes are allowed, RV or mobile home parks are prohibited. Don't miss this unique chance to make this property your own, and create the lifestyle you've been dreaming of!

## LOCATION

City	Weatherford
County	Parker
Schools	Weatherford ISD
Driving Directions	Take the Dennis exit on IH-20. Go north on Dennis. Left on Ellis. The property will be on the right.

## OFFER SUMMARY

List Price	\$499,900
Lot Size	19.62 acres
Utilities	Electric Connected, Well

## HIGHLIGHTS

- 19.62 ACRES
- WATER WELL
- AG EXEMPT
- ELECTRICITY ALREADY ESTABLISHED
- GREAT HOME SITES
- NO RESTRICTIONS ON HOUSING TYPE

## LISTING PRESENTED BY:



**STEPHEN REICH**  
**817-597-8884**  
stephen.reich@williamstrew.com



**PROPERTY WEBSITE LINK:**  
**[stephenreichgroup.com/20782024](http://stephenreichgroup.com/20782024)**





# PROPERTY PHOTOS



STEPHEN REICH – 817.597.8884





# PROPERTY PHOTOS



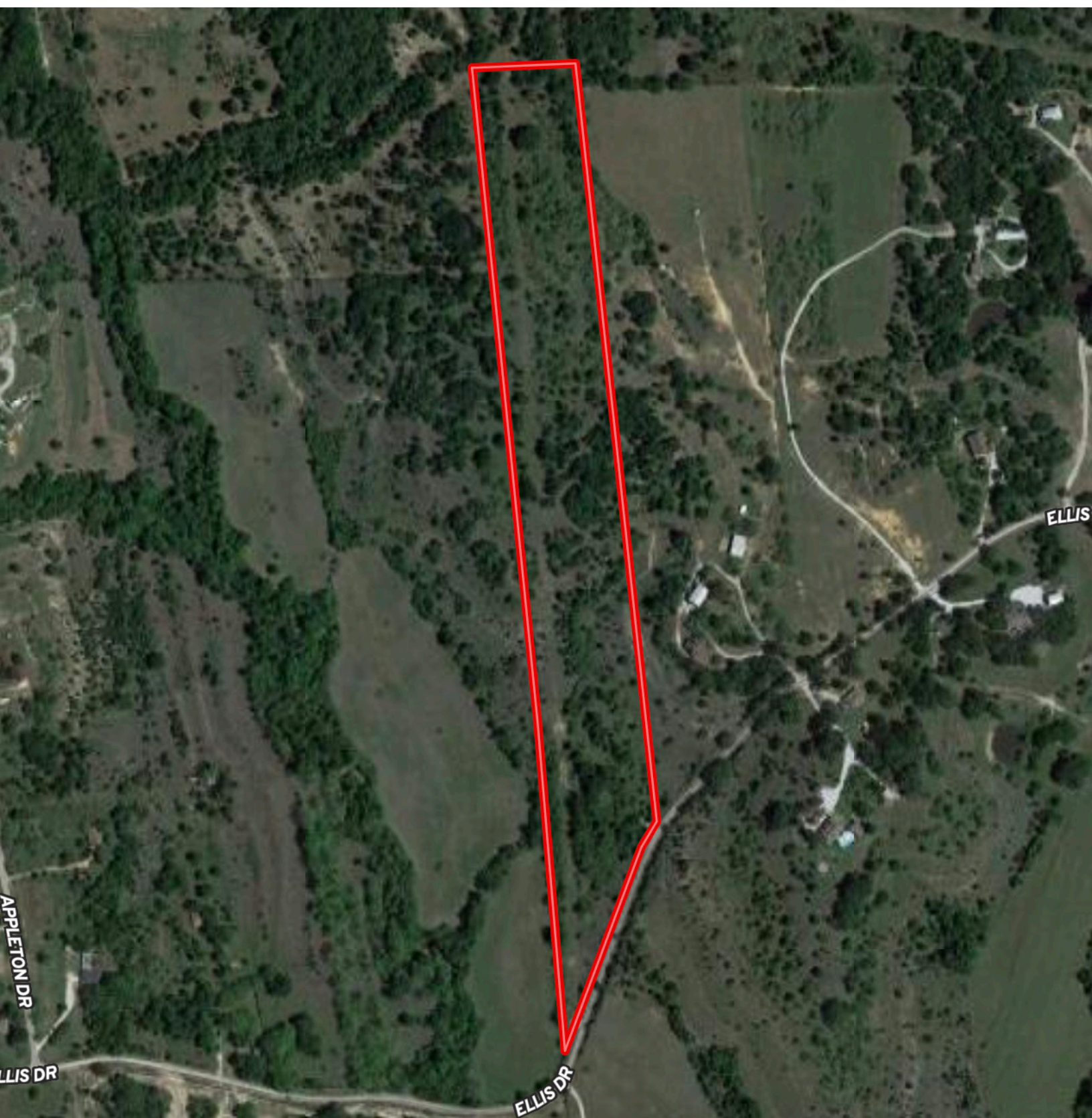
STEPHEN REICH – 817.597.8884



WilliamsTrew  
A DIVISION OF EBBY HALLIDAY REAL ESTATE, INC.



# AERIAL MAP



STEPHEN REICH – 817.597.8884



WilliamsTrew   
A DIVISION OF EBBY HALLIDAY REAL ESTATE, INC.



# CONTOUR LINES & FLOODPLAIN

