



FARM & RANCH

GATED BARNDO RETREAT ON 8.442 SCENIC ACRES

Lot 79 Cartwright Rd. – Weatherford, TX



STEPHEN
REICH GROUP
WILLIAMS TREW REAL ESTATE

WilliamTrew[☆]
A DIVISION OF EBBY HALLIDAY REAL ESTATE, INC.

LISTED BY STEPHEN REICH GROUP OF WILLIAMS TREW REAL ESTATE

PROPERTY SUMMARY

DESCRIPTION

Breathtaking views and incredible sunsets await at this gated barndo retreat on 8.442 scenic acres between Granbury and Weatherford! Just minutes from the iconic Tin Top Bridge at the Brazos River, this 2-bedroom, 1-bath getaway offers stained concrete floors, copper ceiling accents, and over 1,300 sq ft of covered porches. The impressive 59x60 insulated shop features five 14x14 roll-up doors, a mezzanine for added storage, and a 60x20 carport perfect for extra parking or RV storage. Ideal as a weekend escape, a workshop, or a full-time home base with room to expand—or live comfortably while you build your dream home. And TWO private water wells, open land, and secure gated entrance make this property the perfect blend of function and serenity. End each day sitting on the porch, taking in the most incredible views Parker County has to offer.

LOCATION

CITY	Weatherford
County	Parker
Schools	Weatherford ISD
Driving Directions	South on 51 from I 20. Take a slight right on Granbury Hwy. Right on FM 1708. Left on Tin Top. Right on Cartwright. GPS friendly.

OFFER SUMMARY

List Price	\$949,000
Lot Size	8.442 acres
Utilities	Septic, 2 Private Wells

HIGHLIGHTS

1,521 SQ FT | 2 BEDS | 1 BATH

SECURE GATED ENTRANCE

1,300 SQ FT OF COVERED PORCHES

60X20 CARPORT FOR EXTRA PARKING OR RV

59X60 INSULATED SHOP

FIVE 14X14 ROLL-UP DOORS

LISTING PRESENTED BY:



STEPHEN REICH
817-597-8884
stephen.reich@williamstrew.com



TAMMY ROKUS
817-694-8019
tammy.rokus@williamstrew.com



PROPERTY WEBSITE LINK:
stephenreichgroup.com/20900369



PROPERTY PHOTOS



STEPHEN REICH – 817.597.8884
TAMMY ROKUS – 817.694.8019



WilliamsTrew
A DIVISION OF EBBY HALLIDAY REAL ESTATE, INC.

PROPERTY PHOTOS



STEPHEN REICH – 817.597.8884
TAMMY ROKUS – 817.694.8019



WilliamsTrew 
A DIVISION OF EBBY HALLIDAY REAL ESTATE, INC.

AERIAL MAP

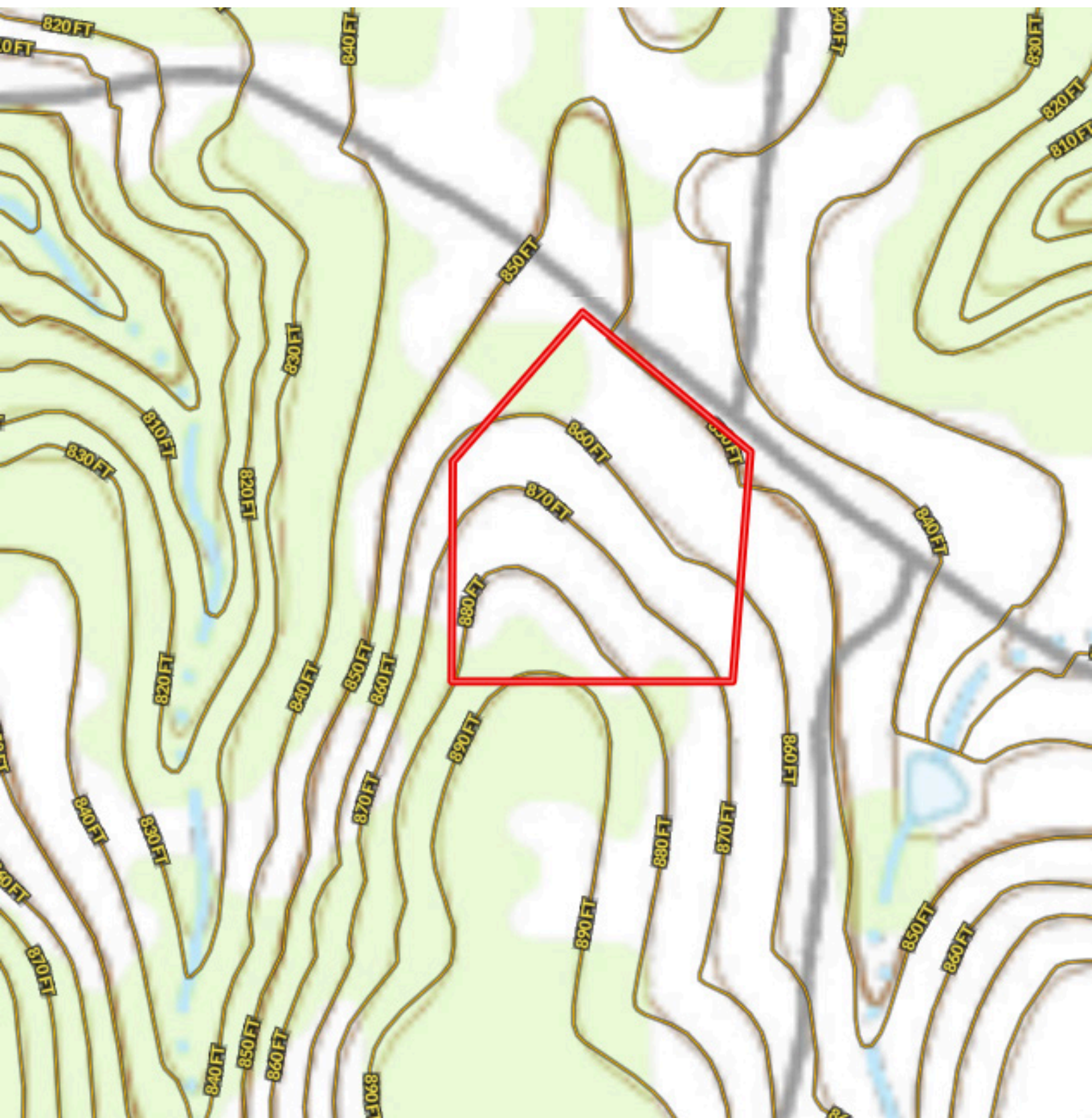


STEPHEN REICH – 817.597.8884
TAMMY ROKUS – 817.694.8019



WilliamsTrew[☆]
A DIVISION OF EBBY HALLIDAY REAL ESTATE, INC.

CONTOUR LINES & FLOODPLAIN



STEPHEN REICH – 817.597.8884
TAMMY ROKUS – 817.694.8019

