

72± Acre Marion County Ranchette

Unassigned NW 27th St, Dunnellon, Florida 34432

Zane Mueller
352-303-9322
zane@saundersrealestate.com

Shea R. Booster
541-771-1177
shea@saundersrealestate.com

PROPERTY OVERVIEW



Sale Price

\$1,305,000

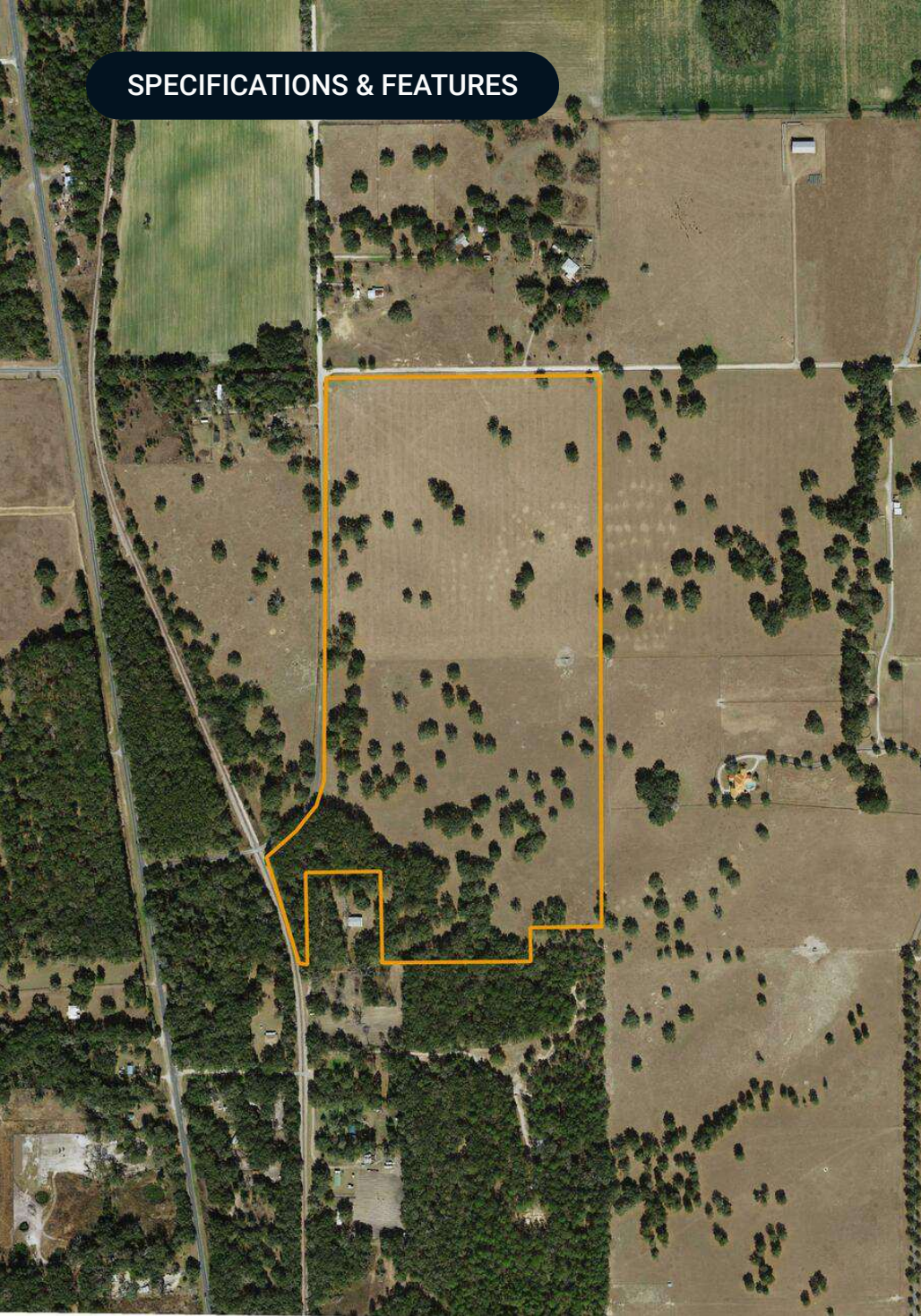
Offering Summary

Acreage:	72.5 Acres
Price / Acre:	\$18,000
State:	Florida
City:	Dunnellon
County:	Marion
Property Type:	Land

Property Overview

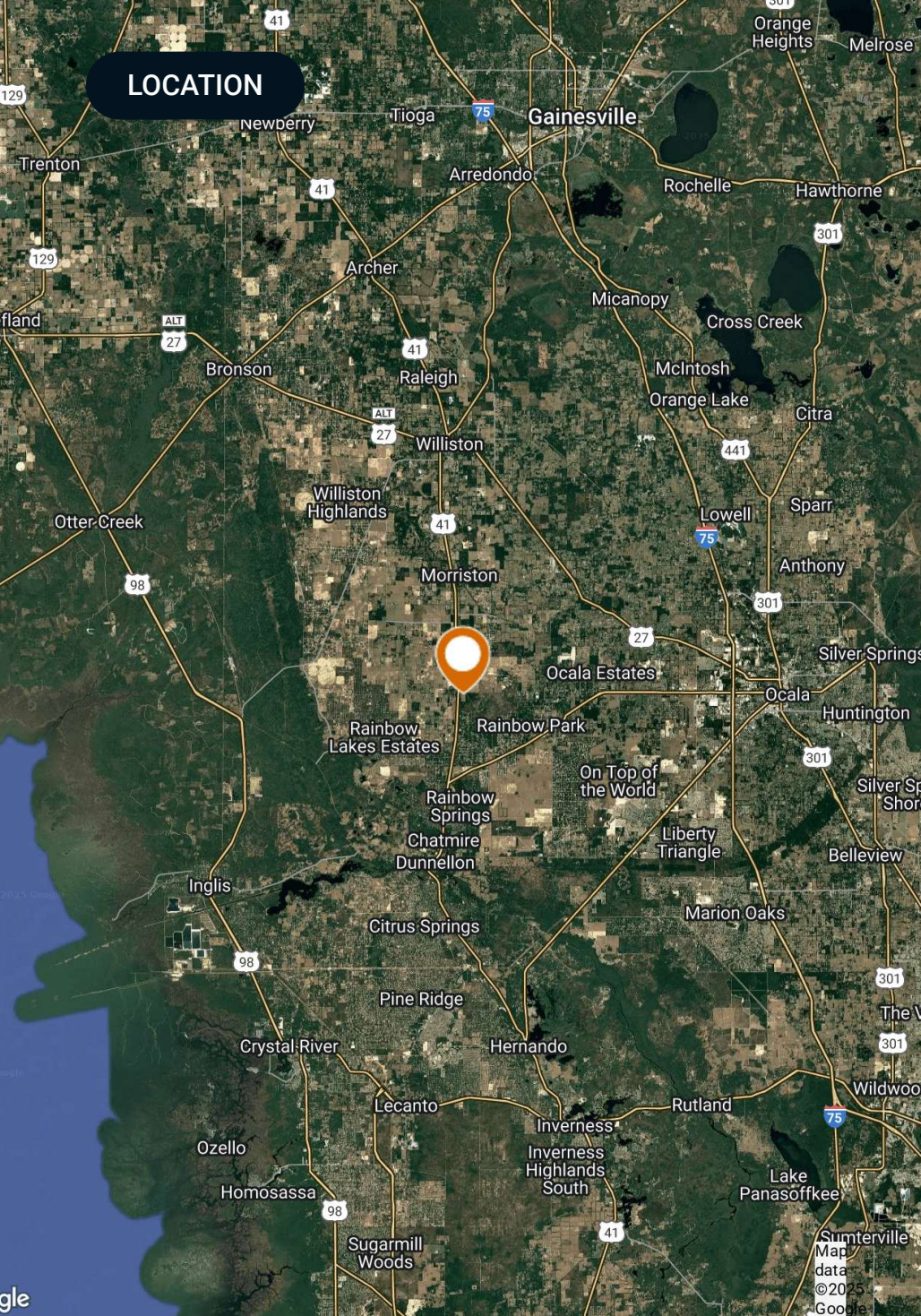
Located in the rural Romeo community just outside Dunnellon, this 72± acre ranchette offers a versatile setup for equestrian, cattle, or agricultural use. The land consists of open pasture and natural timber and offers a mix of high, dry ground ideal for a homestead. Its location is just 20 minutes from the World Equestrian Center in Ocala and under 10 minutes to Dunnellon, providing a balance of seclusion and accessibility to major amenities and equine infrastructure.

SPECIFICATIONS & FEATURES



Specifications & Features

Uplands / Wetlands:	100% Uplands
Soil Types:	<ul style="list-style-type: none">• Candler Sand• 0 To 5 Percent Slopes
Taxes & Tax Year:	209.35 - 2024
Zoning / FLU:	A-1/RL
Fencing:	Perimeter Fencing



LOCATION

Location & Driving Directions

Parcel: 19955-001-01

GPS: 29.21281, -82.434624

Driving Directions: Contact Shea Booster (541-771-1177) or Zane Mueller (352-303-9322)

Showing Instructions: Contact Shea Booster (541-771-1177) or Zane Mueller (352-303-9322)



ADDITIONAL PHOTOS





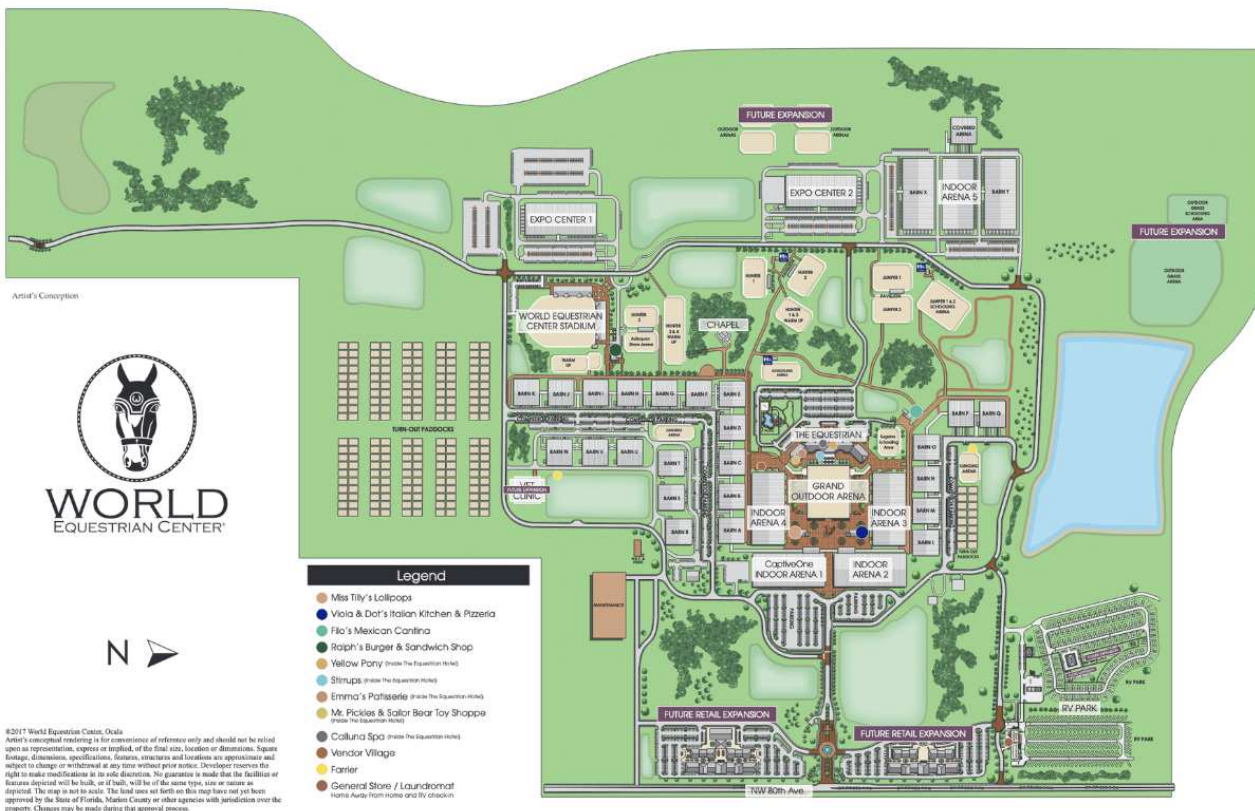
LOCATED LESS THAN 20
MINUTES FROM THE LISTING



NEARBY POINTS OF INTEREST

World Equestrian Center

Named one of TIME's 2024 World's Greatest Places, the World Equestrian Center is a premier destination for equestrian and multidisciplinary events, with venues in Ocala, Florida, and Wilmington, Ohio. Committed to excellence, the center provides an unparalleled experience for exhibitors, spectators, vendors, sponsors, and retailers. With a focus on quality, class, and distinction, it offers world-class facilities designed to support top-tier competition in a welcoming, family-friendly environment. Whether hosting elite equestrian events or diverse sporting and entertainment gatherings, the World Equestrian Center stands out as a leader in its field.





ACROSS FROM THE LISTING



NEARBY POINTS OF INTEREST

HITS Post Time Farm

Spanning 500 acres in the heart of the Horse Capital of the World, HITS Post Time Farm in Ocala is one of the most expansive and horse-friendly showgrounds in the nation. Known for hosting USEF-rated hunter/jumper competitions each winter, the facility offers a world-class experience for equestrians and spectators alike. With modern barns, competition rings, and hospitality amenities, it's a seasonal home for riders from around the country. Just 16 miles from downtown Ocala and surrounded by Florida's natural beauty, it's more than a venue—it's an equestrian lifestyle hub.

On Top of the World

LOCATED LESS THAN 30
MINUTES FROM THE LISTING



NEARBY POINTS OF INTEREST

On Top of the World Community



Neighborhoods

- Candler Hills
- Indigo East
- Weybourne Landing
- Windsor
- Avalon
- Providence
- Williamsburg
- Friendship Colony
- Friendship Park
- Friendship Village
- Crescent Ridge
- Americana Village
- Crescent Green
- Renaissance Park
- Longleaf Ridge

Circle Square Commons

- The Ranch Fitness Center & Spa
- Circle Square Cultural Center
- The Town Square
- On Top of the World
- Real Estate of Marion, LLC
- Bridgenet Communications
- Master the Possibilities
- Sid's Coffee Shop & Deli
- Bay Laurel Center CDD
- The World News
- Accounting
- Colen Built Design Studio

Amenities

- Ⓜ Restricted Access
- Ⓜ Mailboxes
- Ⓜ Recycling
- Ⓜ Compactor/Garbage
- Ⓜ Cardboard
- Ⓜ Playground/Basketball
- Ⓜ Gate

On Top of the World is a premier 55+ active adult community located in Ocala, Florida, known for its resort-style amenities and vibrant lifestyle. Spanning thousands of acres, the community offers a variety of home styles, from single-family residences to maintenance-free villas, designed for comfortable and modern living. Residents enjoy an impressive range of amenities, including multiple golf courses, fitness centers, swimming pools, tennis and pickleball courts, and miles of walking and biking trails. The community also features numerous social clubs, lifelong learning programs, and entertainment options, fostering an engaging and active environment. Conveniently located near Ocala's shopping, dining, and medical facilities, On Top of the World provides a well-rounded, community-focused lifestyle.



For more information visit www.saundersrealestate.com

Headquarters

1723 Bartow Road
Lakeland, FL 33801
863.648.1528

Orlando

605 E Robinson Street
Suite 410
Orlando, FL 32801
407.516.4300

North Florida

356 NW Lake City
Avenue
Lake City, FL 32055
352.364.0070

Georgia

203 E Monroe Street
Thomasville, GA 31792
229.299.8600

Arkansas

112 W Center St, Suite
501
Fayetteville, AR 72701
479.582.4113

