



# WHERE NATURE LEADS ...AND LEGACY FOLLOWS



Cedar Creek Ranch  
Leelanau County, MI

Life. Wonder. Wild.



## Limitless possibilities:

- ◆ Private Family Retreat
- ◆ Boutique Winery
- ◆ Bed & Breakfast Escape
- ◆ Clamping Adventures
- ◆ Equestrian Estate
- ◆ Luxury Wilderness Retreat
- ◆ Nature Filled Event Venue
- ◆ Timber Management

# Life, Land, and Wonder---

## An Invitation to Dream Bigger

Every so often, a property comes along that doesn't just check boxes...It speaks to the soul. It opens doors. To freedom. To vision. To something entirely your own. Where nature leads, imagination follows, and possibility stretches as far as the ridgeline.

Cedar Creek Ranch isn't just a property. It's a feeling. A rare stretch of Northern Michigan land where the wild whispers, the sky stretches wide, and the horizon is filled with possibility. Here, you don't step onto a parcel, you step into potential.

The landscape is the star: a thoughtfully preserved mix of open meadows, wooded ridges, and trails—a Jurassic Park of the North. Here, sunlight dapples the forest floor. Deer pass quietly in the early morning. It's a place where you can breathe deeply, think clearly, and move at your own rhythm.

This land doesn't come with pre-written plans. It comes with permission to dream big—and the kind of quiet that helps you hear those dreams more clearly. Whether you envision a private retreat,

a modern homestead, a basecamp for Northern Michigan adventures, or a legacy to pass down, Cedar Creek Ranch is ready to evolve with you.

Located in the heart of Leelanau County, just minutes from the charming town of Cedar, this property offers the perfect blend of seclusion and connection. You're close to local markets, boutique shops, inland lakes, and the timeless draw of Lake Michigan's shoreline. World-class trails, vineyards, and dining are all nearby—but never in the way.

Properties like this don't come along often—not with this much privacy, this much character, and this much raw potential. Cedar Creek Ranch is not for the follower—it's for the founder. And now, it's ready for its next chapter.

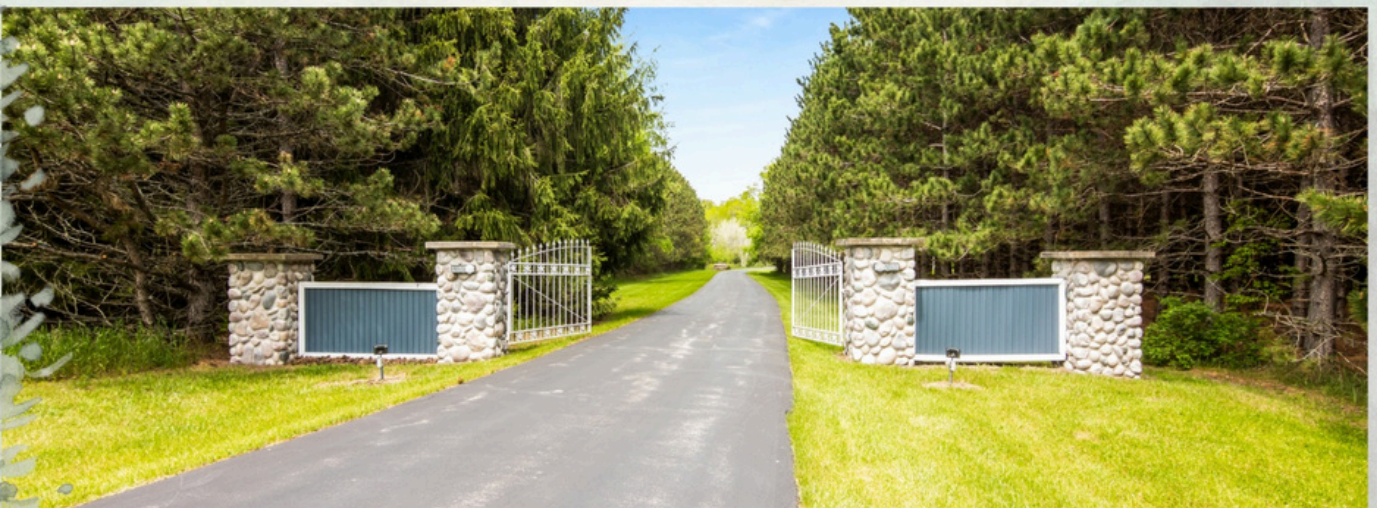
For the dreamer.

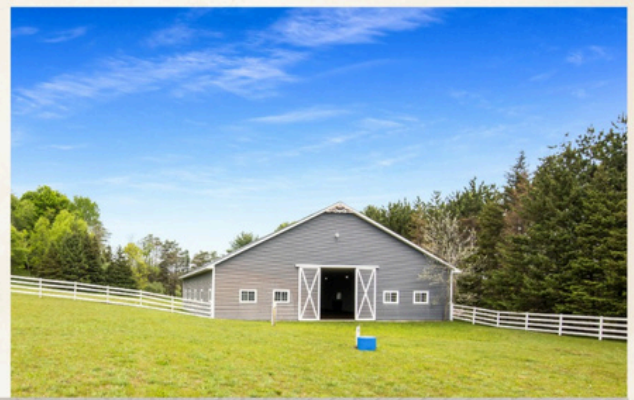
The doer.

The one who hears the call of the wild—and is ready to answer it.



## Opportunity awaits here...





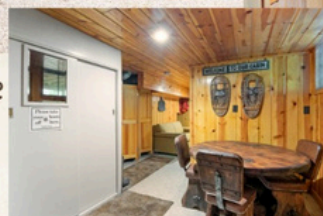
### 50'x56' Five Stall Horse Barn

- 72'x80' Indoor Riding Arena
- Feed Storage, Indoor Wash/Groom Area
- Spacious Outdoor Pasture
- 40'x40' Heated Workshop



### Hunting Lodge/Guest House

- 3 bed, 1 bath, 1,400 sq ft
- Kitchen w/ built in dining
- Fireplace
- Large deck w/ overlook views

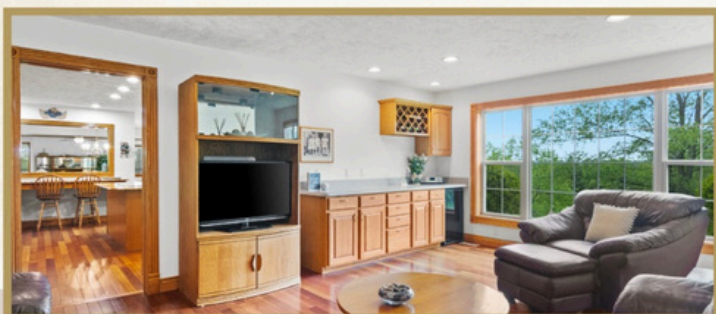




## Custom Home

6,200 sq ft  
4 bed | 4 bath

Set high above the landscape and surrounded by towering hardwoods, the custom-built main home is a reflection of the care and legacy that define Cedar Creek Ranch. Spacious, sun-filled rooms are wrapped in rich oak and cherry finishes, with views that stretch across the countryside and the estate below. A wide porch surrounds the home, offering sunrise moments, wildlife sightings, and a front-row seat to the beauty of the land in every direction. Built with intention and meticulously maintained, this home is both a sanctuary and a statement—rooted in privacy, framed by nature, and ready for the next chapter to begin.







# Estate Overview



- 400 +/- acres in beautiful Leelanau County
- 6,200 sq ft 4 bed/4 bath custom built main house
- 1,400 sq ft 3 bed/1 bath hunting/guest lodge
- Beautiful 50'x56' 5 stall heated barn
- 72'x80'x14' indoor riding arena (connected to barn)
- 40'x40' heated workshop (connected barn)
- Custom "Elk" Building 40'x30' with 16'x30' 2<sup>nd</sup> floor office; trophy displays; antler product workshop, heated
- 80'x40' heated storage building, finished interior
- 24'x24' equipment pole building / feed storage
- 24'x24' accessory building with 32' lean-to extension
- 60'x10' hay/feed, implements storage building
- 24'x24' insulated workshop
- 60'x24' equipment storage (1/2 heated with water)
- Rifle range hut with target
- Multiple raised deer blinds
- Multiple deer feeders
- Victoria Creek (Cedar Creek) flows through property with numerous small creeks
- 200 acre elk/deer enclosure with 10' fence. Michigan DNR/Department of Agriculture permits in place; transfers with sale of property; set to renew in 2027
- Maple, Cherry, Poplar, Beech, and Cedar standing timber





30'x40' Elk Building &  
Trophy Building & Office



60'x24' Storage Building

- 300 gallon gas tank
- 500 gallon diesel
- Track vehicles for wetlands



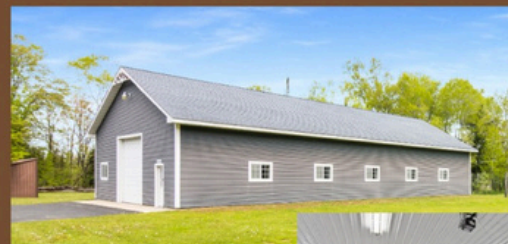
#1: 60'x10' Feed Storage

#2: 20'x24' Equipment Storage

#3: 24'x24' Building w/ 30' Lean-to Storage



24'x24' Insulated Wood  
Workshop

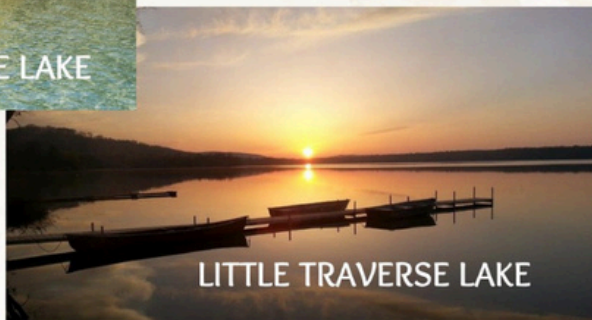


80'x40' Heated  
Storage Building  
w/ Batting Cage



Hunting Blinds,  
Deer Feeders, &  
More...

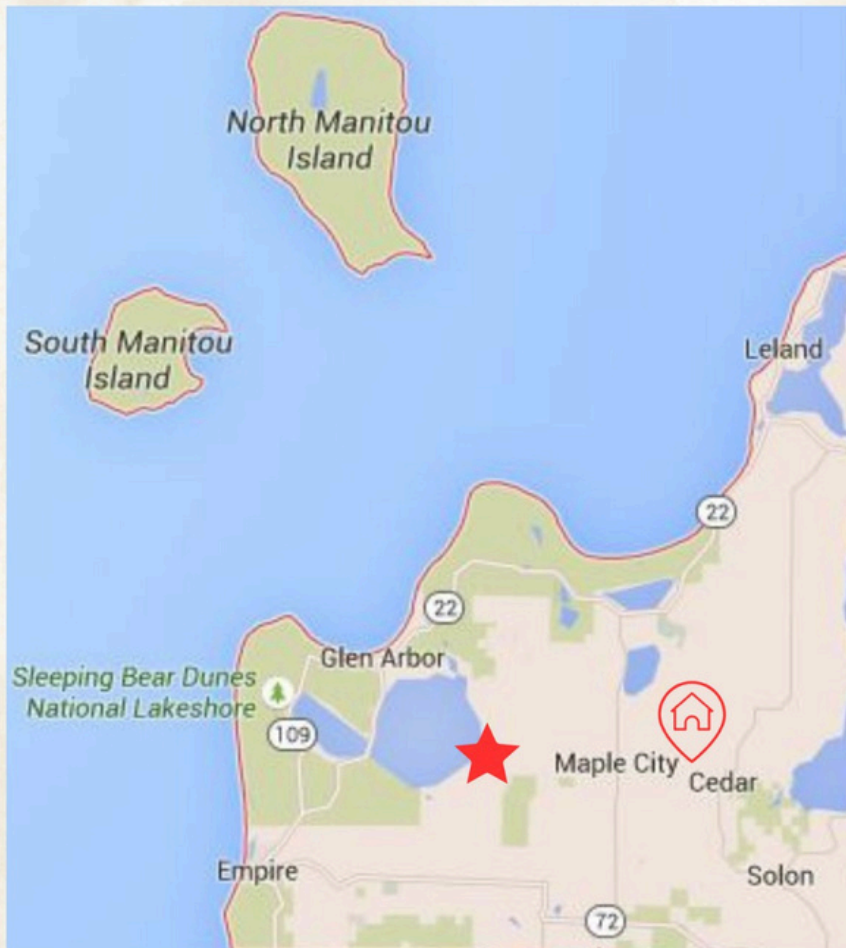
# CEDAR



Tucked in the heart of Leelanau County, Cedar is a small town with big character. Known for its Polish roots and annual Polka Fest, Cedar brings locals and visitors together through celebration, tradition, and small-town charm. This welcoming community is home to hardworking families, local farmers, and small businesses that keep downtown humming—from a favorite local watering hole, to the hometown essentials at Buntings Cedar Market, fresh produce at the corner stand, and a seasonal scoop from Blue Moon Ice Cream. You'll also find unique shops, cozy eateries, and plenty of northern hospitality. Just minutes from Maple City, Lake Leelanau, and a short drive to Traverse City, Cedar offers the perfect blend of community, culture, and countryside.



# GLEN LAKE COMMUNITY SCHOOLS

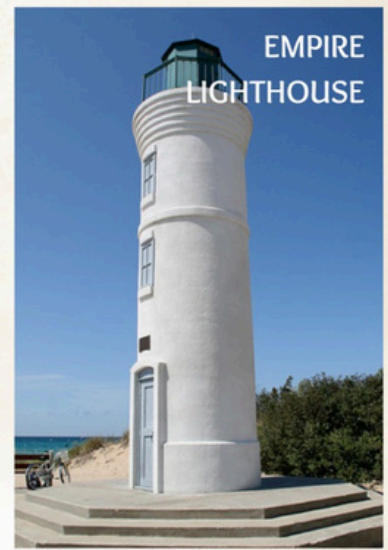
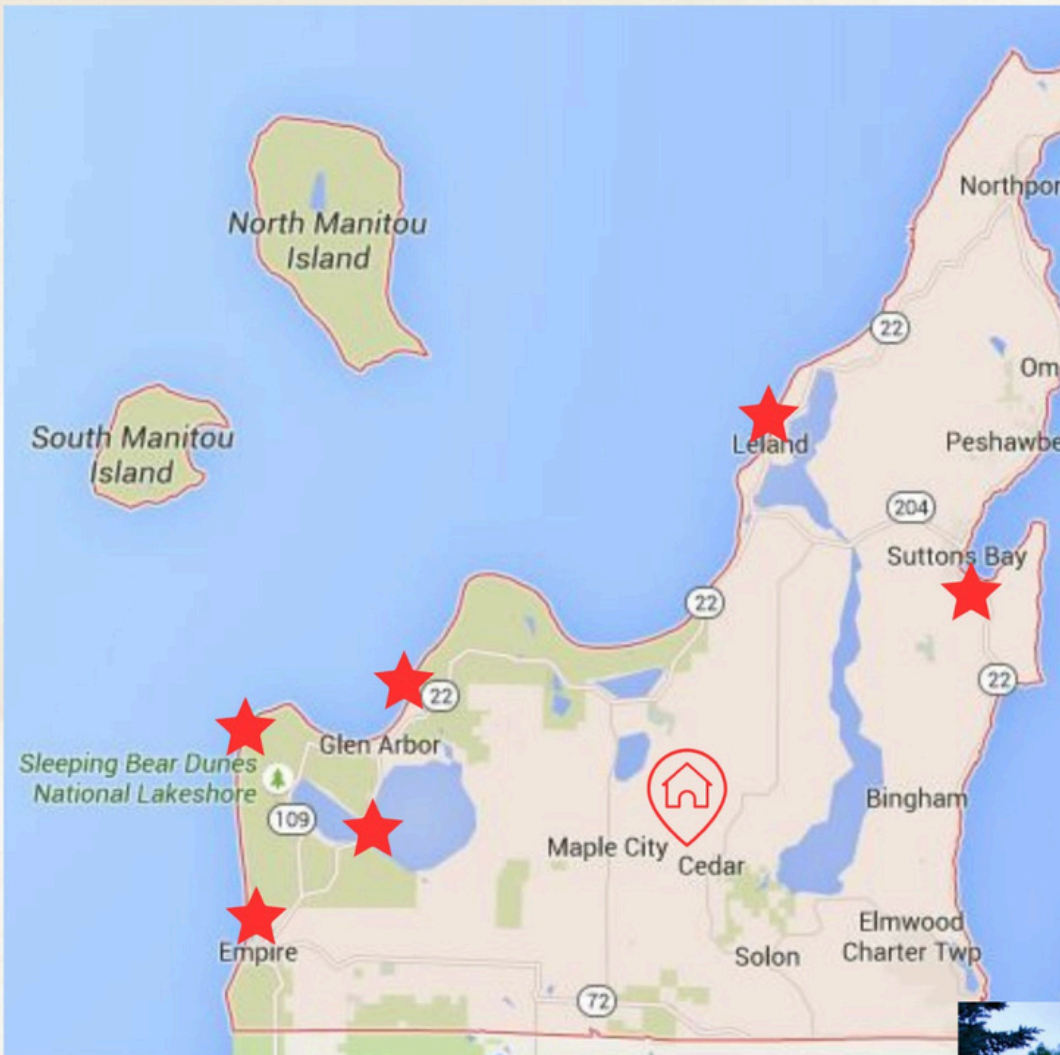


Welcome to Glen Lake Community Schools, home of the Lakers. Glen Lake prides itself in a top notch education for grades preschool-twelfth. The teachers, support staff, administration, and professional services all work together to create a conducive environment where learning happens and student achievement is attained.

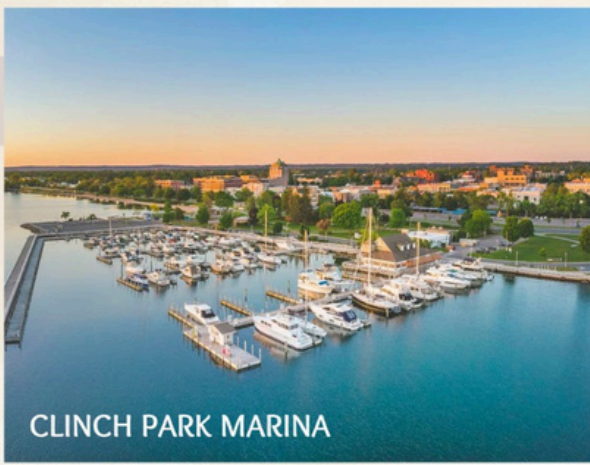


3375 W Burdickville Road  
Maple City, MI  
(231)334-3061

# LEELANAU COUNTY & ITS MANY OFFERINGS



# TRAVERSE CITY



CLINCH PARK MARINA



SANDY BEACHES



GOLFING



WINERIES



THE VILLAGE  
AT GRAND TRAVERSE COMMONS

Welcome to Traverse City, MI, harbored along the pristine waters of Grand Traverse Bay, an inlet of Lake Michigan. Each season in Traverse City offers unique experiences for residents and visitors alike. In spring, the cherry orchards bloom, reaffirming the city's title as the "Cherry Capital of the World." Summer invites you to relax on sandy beaches and partake in the renowned National Cherry Festival. Autumn showcases vibrant foliage tours through the countryside's hardwoods, and winter provides opportunities for skiing and snowshoeing, followed by indulgence in locally crafted beverages and the diverse culinary delights of Traverse City's eateries.

Yet Traverse City is more than just a seasonal destination—it's a thriving place to live, work, and grow. Recently reclassified as a Metropolitan Statistical Area, the region has seen record-high employment and steady population growth. With strong support from organizations like Traverse Connect, the local economy continues to evolve—from its 19th-century roots in timber to today's blend of tourism, tech, agriculture, and entrepreneurship.

Innovative projects like the Freshwater Research & Innovation Center are shaping the future, while state grants and workforce initiatives are helping attract and retain talent.



Whether you're an entrepreneur, a professional seeking new opportunities, or someone looking to enjoy the natural beauty and community spirit of northern Michigan, Traverse City offers the perfect blend of natural beauty, year-round adventure, and opportunity.



CULINARY STANDOUTS



TRAVERSE CITY  
HORSE SHOWS

