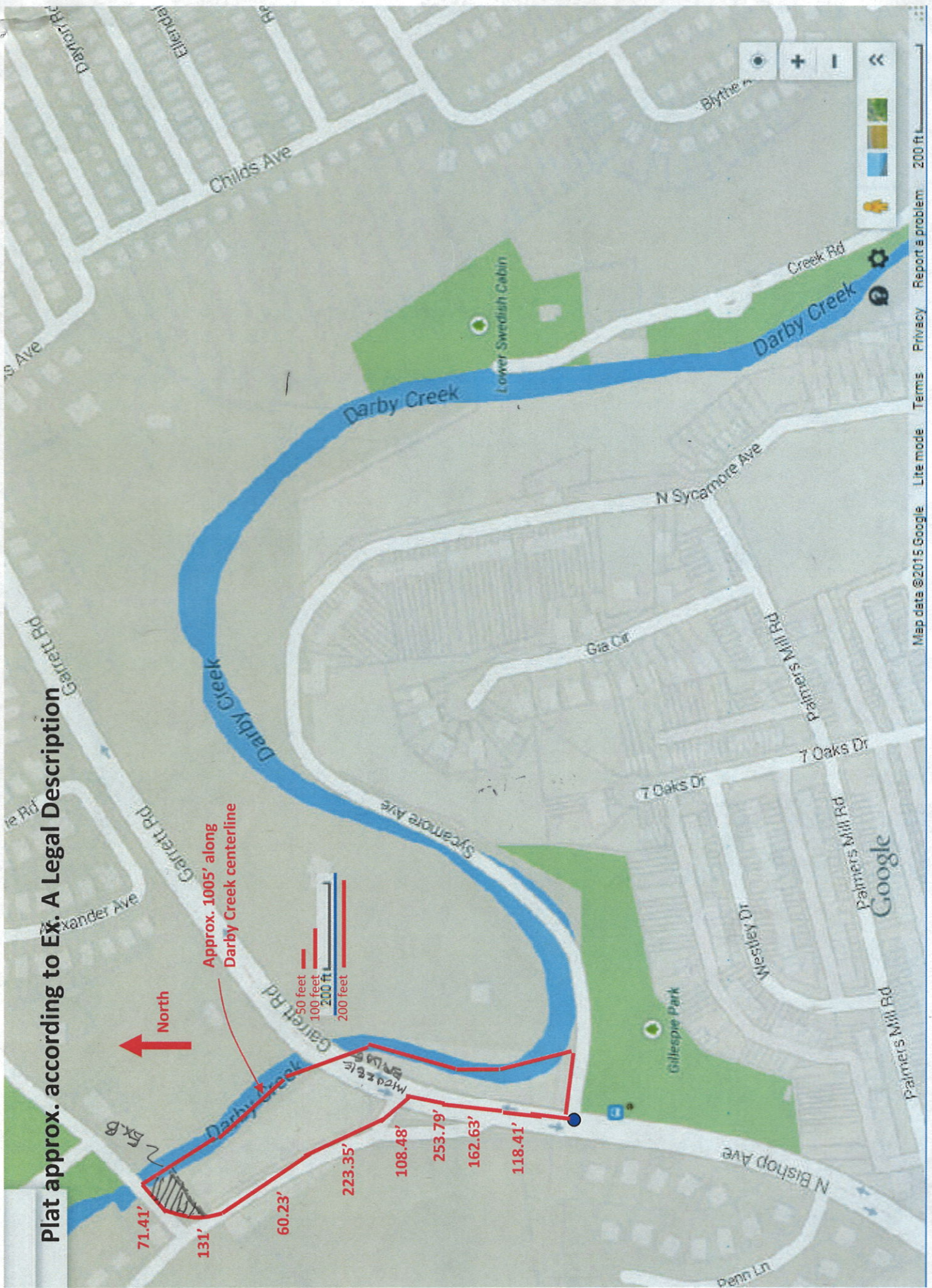
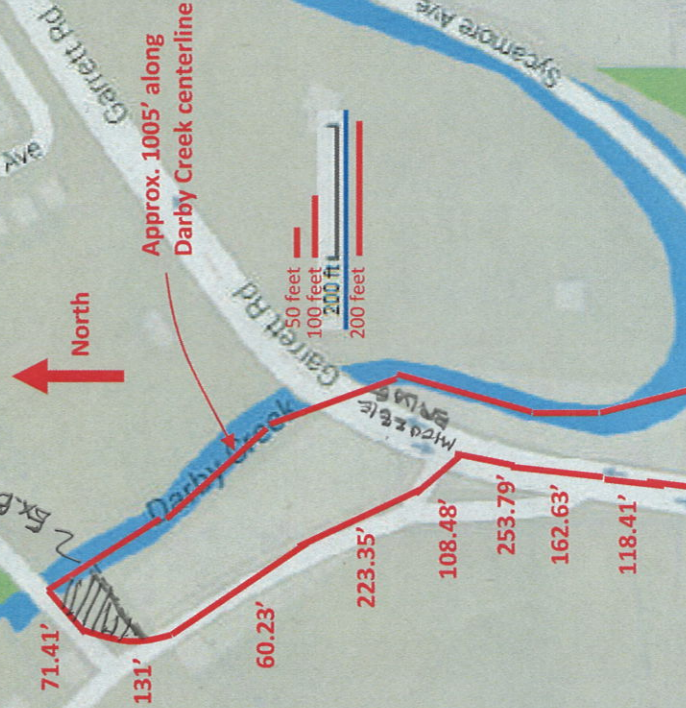
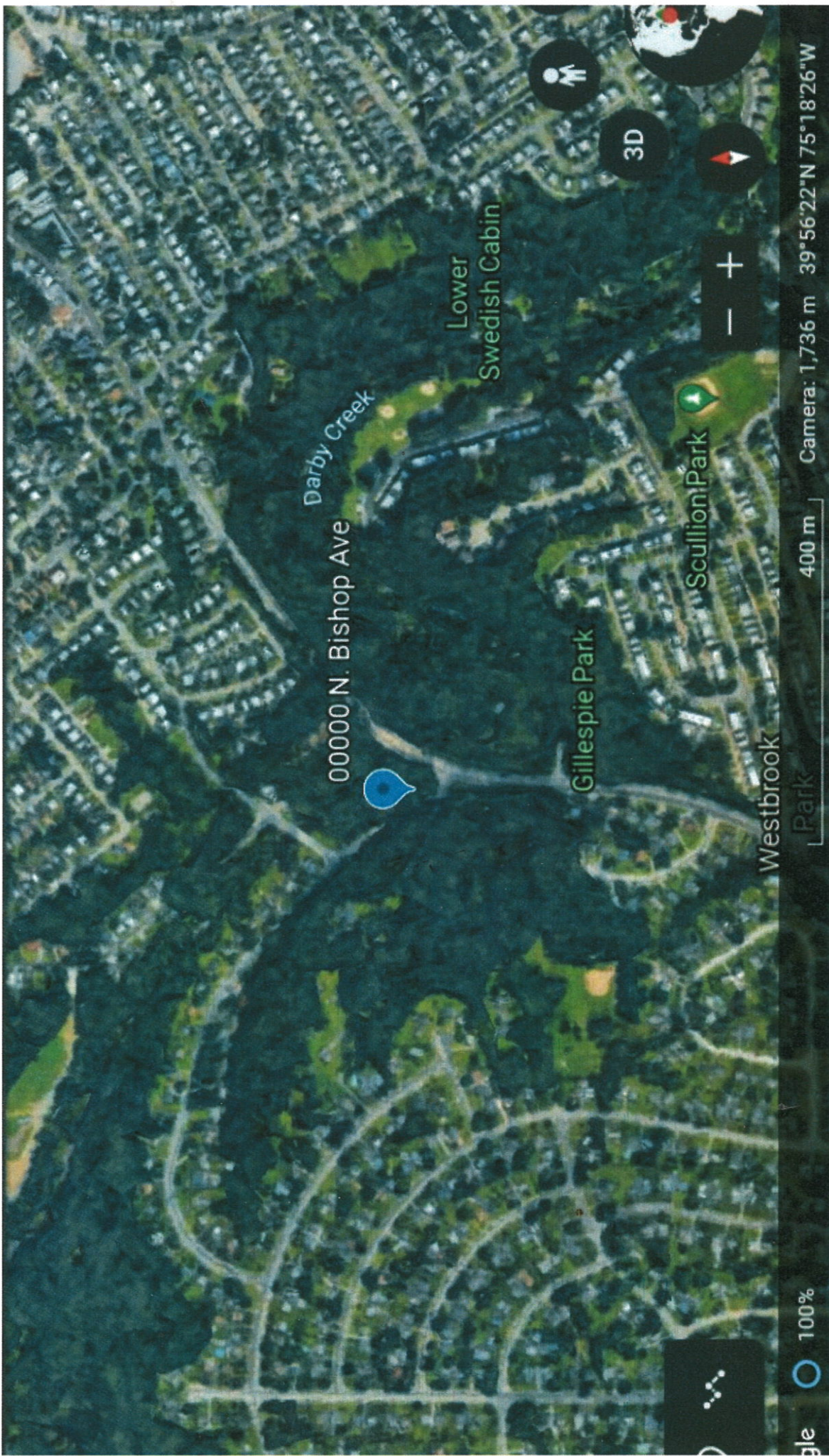


Plat approx. according to Ex. A Legal Description





gle 100%

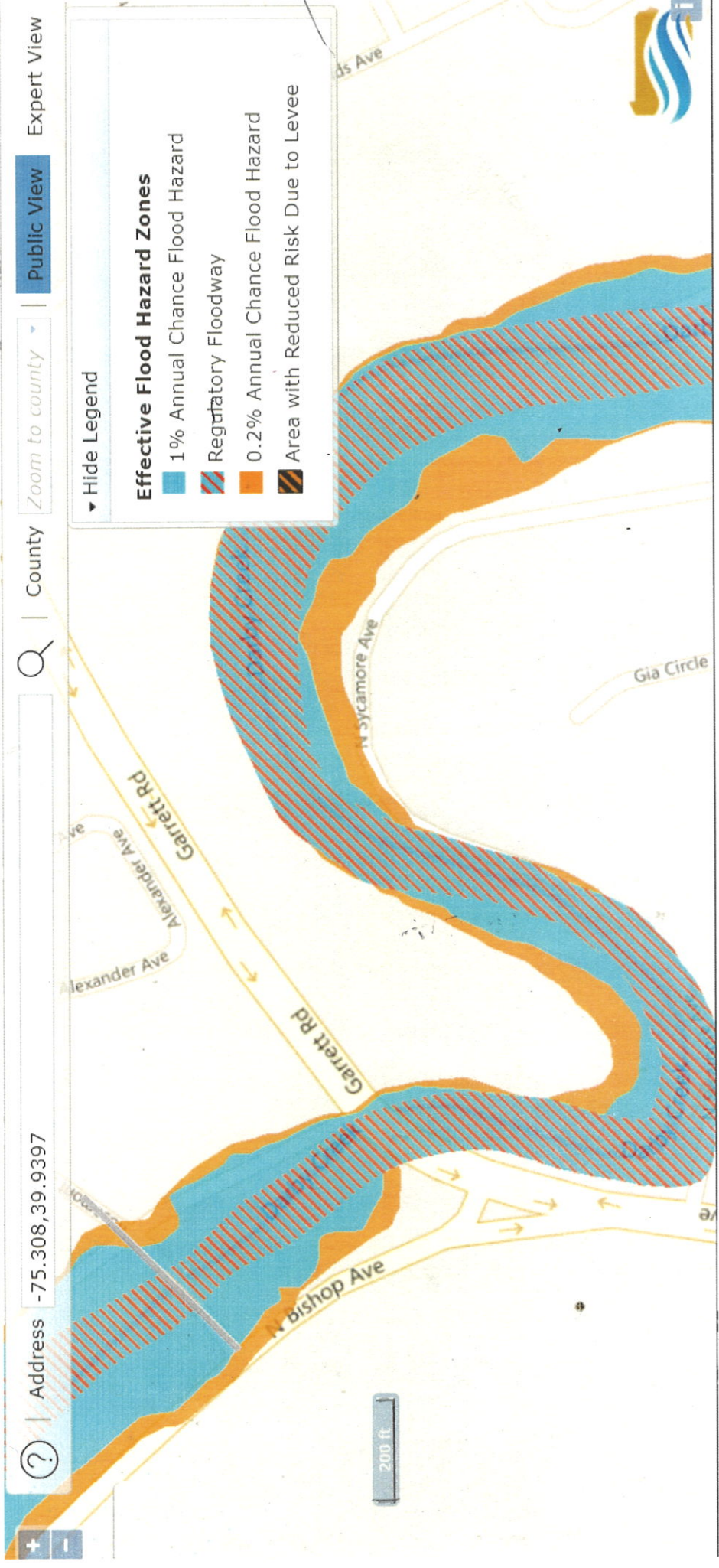
400 m

Camera: 1,736 m 39°56'22"N 75°18'26"W

▼ Hide Legend

Effective Flood Hazard Zones

- 1% Annual Chance Flood Hazard
- Regulatory Floodway
- 0.2% Annual Chance Flood Hazard
- Area with Reduced Risk Due to Levee



National Wetlands Inventory

surface waters and wetlands

ABOUT GET DATA PRINT Q FIN

BASEMAPS >

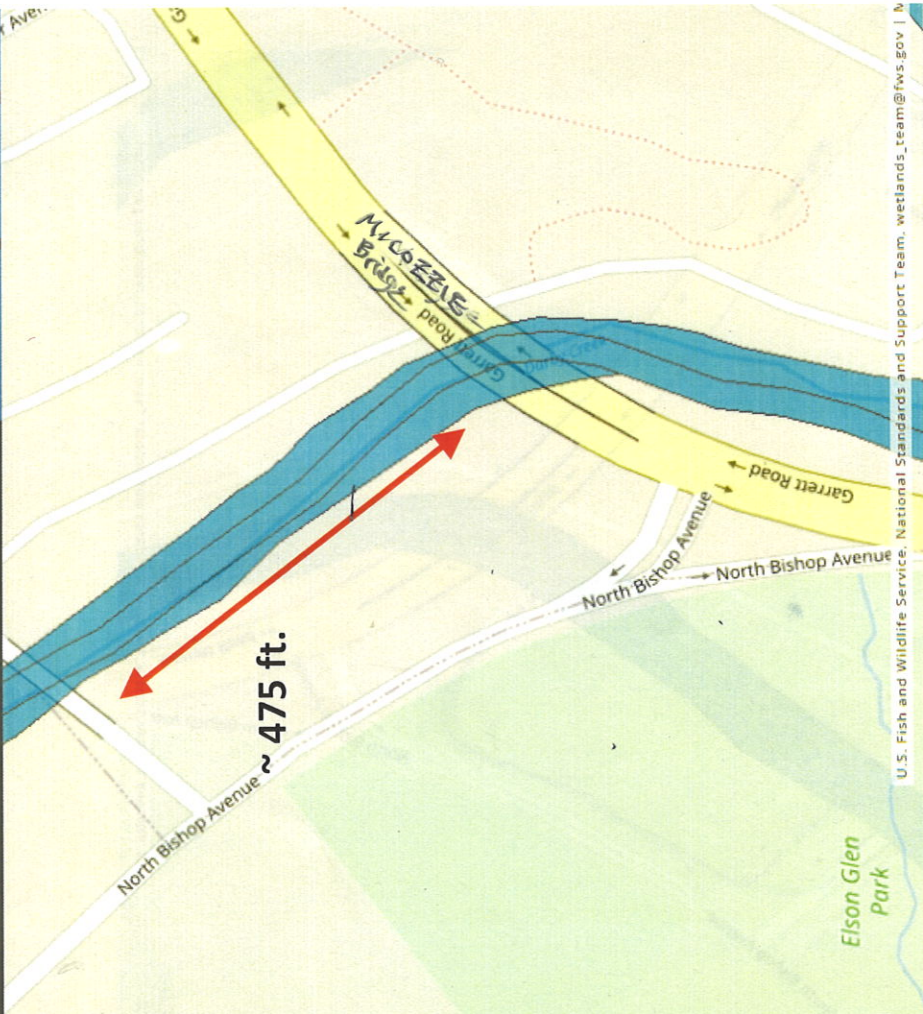
- STREETS
- SATELLITE
- HYBRID
- TOPO
- TERRAIN
- GRAY
- OPEN STREET MAP
- NATGEO
- USGS TOPO
- NAT'L MAP

MAP LAYERS >

- Wetlands
- Riparian
- Riparian Mapping Areas
- Data Source

Measure

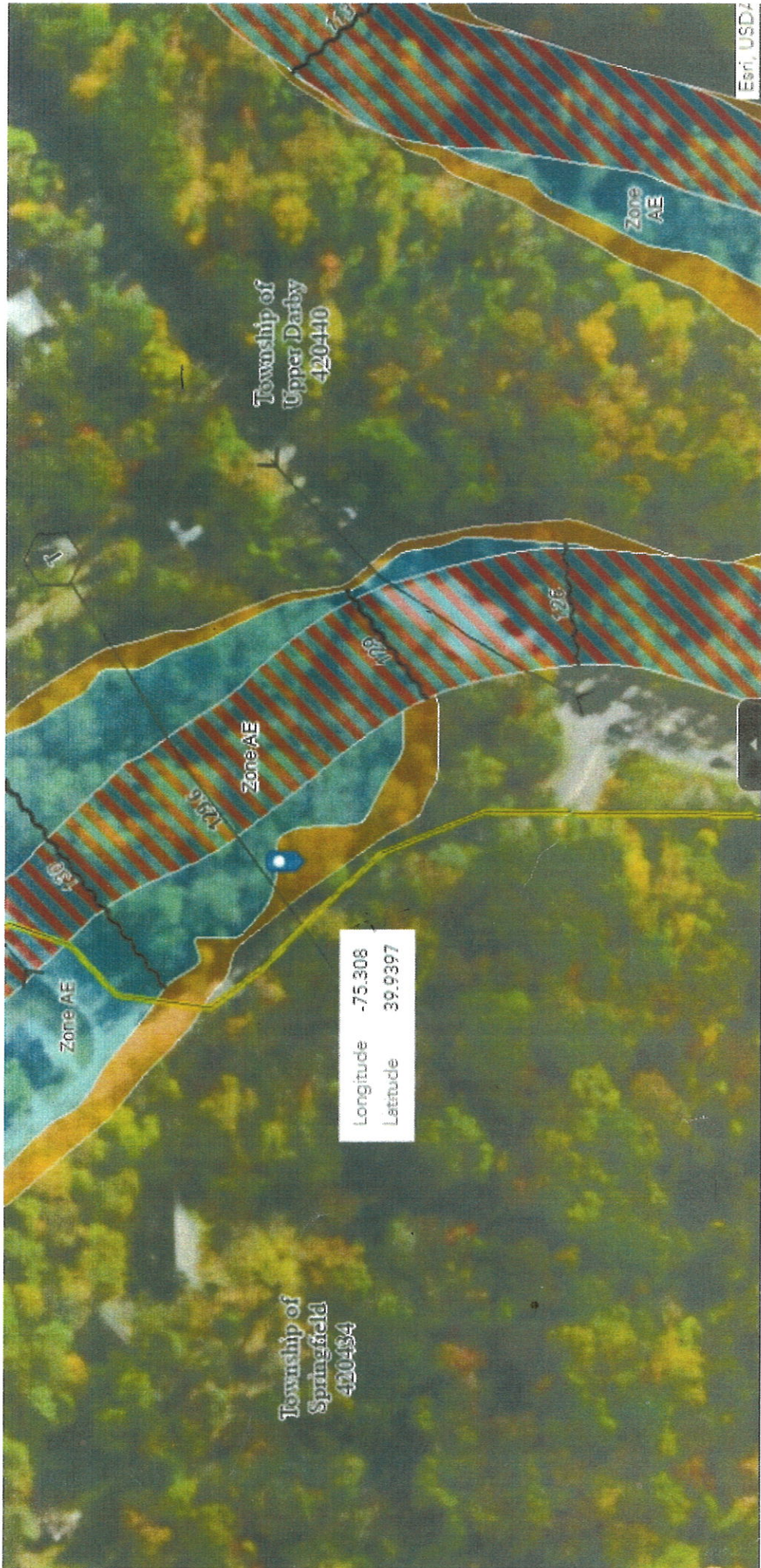
Measurement Result



U.S. Fish and Wildlife Service, National Standards and Support Team, wetlands_team@fws.gov | N

FEMA's National Flood Hazard Layer (Official)

Data from Flood Insurance Rate Maps (FIRMs) where available digitally. New NFHL FIRMette Print app available:
<http://tinyurl.com/fj4xwp5e>





View of Derby Creek through trees


LS

PEDESTAL HOUSE FOR FLOODPLAIN INSTALLATION

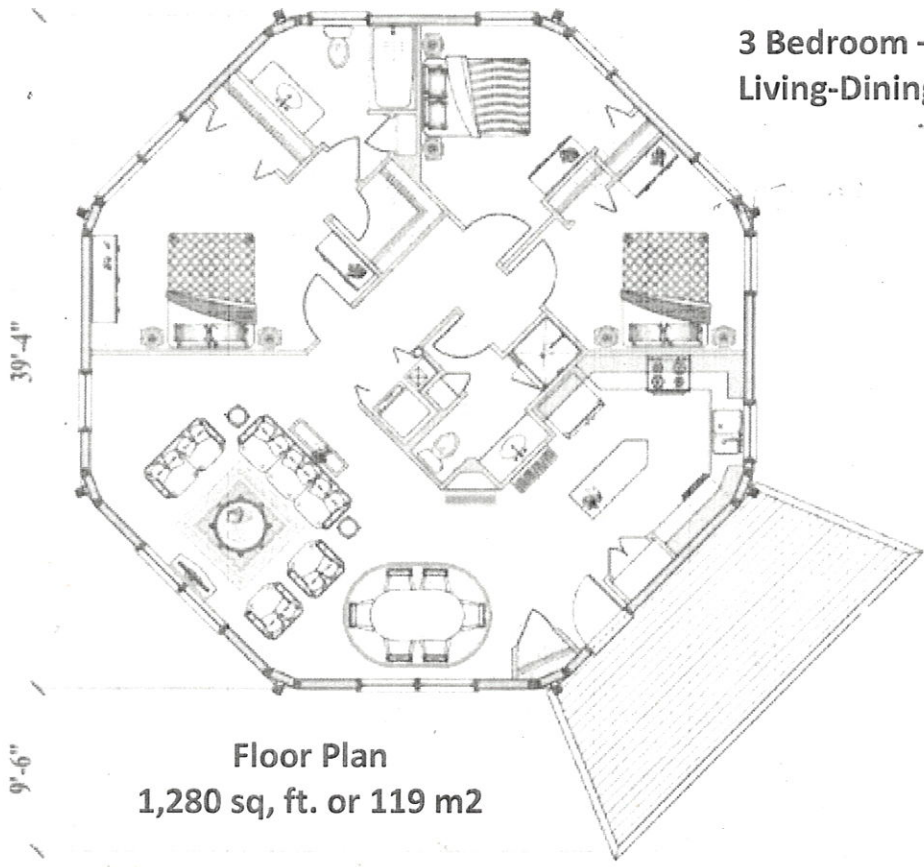
Lawrence Silverman

1,430 sq. ft. 3 BR, 2 bath

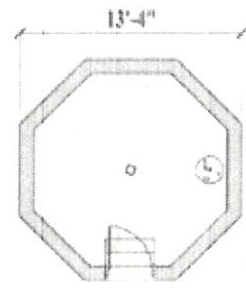


 pedestal
pilings

3 Bedroom – 2 Baths
Living-Dining-Kitchen-Laundry



Floor Plan
1,280 sq. ft. or 119 m2



Pedestal Plan
150 sq. ft.

CONCEPT - Topsider Pedestal Homes



This double pedestal home near Victoria, British Columbia, Canada was built on an earthquake-prone coastal hillside. It was custom designed and engineered to be seismic-resistant while also providing incredible panoramic views of the ocean inlet below.

TOPSIDER
HOMES.
→



Engineered for Maximum Safety

This Topsider stilt house is elevated 18 feet and was built on the Gulf Coast of Mississippi. It replaced a home destroyed by Hurricane Katrina. Topsider engineers each hurricane-area home to include extreme high-wind structural capacity and high impact glass for maximum protection.



HOMES

&
Land

OF THE DELAWARE & LEHIGH VALLEYS
OF PENNSYLVANIA



Vol 43#06 HOMESANDLAND.COM

HONEY HOLLOW HIDEAWAY
6 ACRES PERCHED ON TOP OF A HILL

Presented by Nick Esser, Addison Wolfe Real Estate | See page 5

