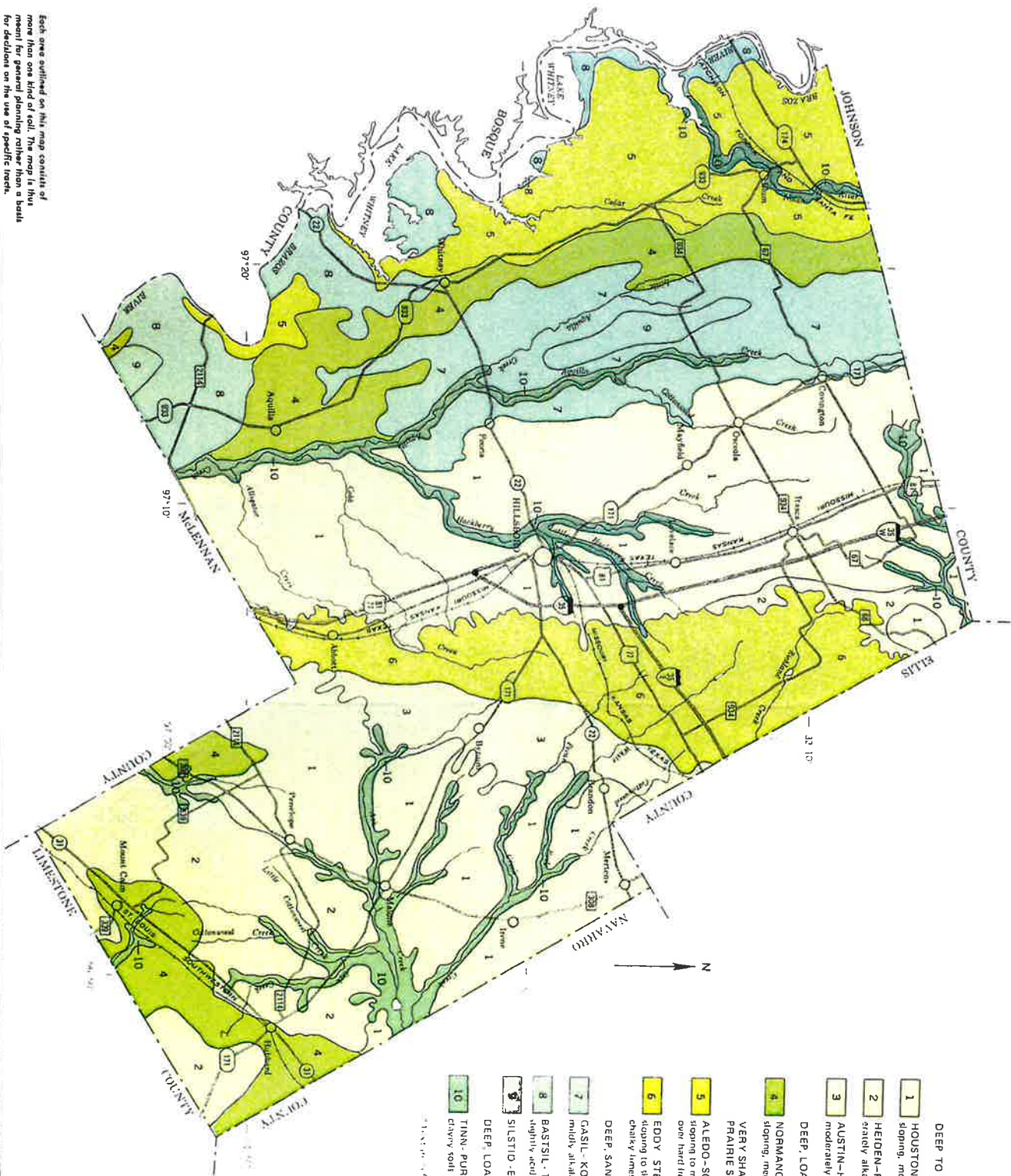


Each area outlined on this map consists of more than one kind of soil. The map is thus meant for general planning rather than a basis for decisions on the use of specific tracts.



LEGEND*

DEEP TO MODERATELY DEEP, CLAYEY PRAIRIE SOILS

- 1 HOUSTON BLACK-HEIDEN-ALTOGA: Deep, nearly level to gently sloping, moderately alkaline clayey soils.
- 2 HEIDEN-FERRIS: Deep, gently sloping to moderately sloping, moderately alkaline clayey soils.
- 3 AUSTIN-HOUSTON BLACK: Moderately deep to deep, gently sloping, moderately alkaline clayey soils.

DEEP, LOAMY, PRAIRIE SOILS

- 4 NORMANGE-WILSON-CROCKETT: Deep, nearly level to moderately sloping, medium acid to mildly alkaline loamy soils.

VERY SHALLOW TO MODERATELY DEEP, LOAMY AND CLAYEY PRAIRIE SOILS

- 5 ALEDO-SOMERVELL-BOLAR: Shallow to moderately deep, gently sloping to moderately steep, moderately alkaline loamy and clayey soils over hard limestone.
- 6 EDDY STEPHEN-AUSTIN: Very shallow to moderately deep, gently sloping to sloping, moderately alkaline loamy to clayey soils over chalk or chalky limestone.

DEEP, SANDY AND LOAMY SAVANNAH SOILS

- 7 GASIL-KONSIL-CROSTELL: Deep, nearly level to strongly sloping, mildly alkaline to slightly acid loamy soils.

- 8 BASTIL-TRAVIS-AQUILLA: Deep, nearly level to gently sloping, slightly acid to mildly alkaline sandy to loamy soils.

- 9 SILSTID-EUFALUA: Deep, gently sloping, slightly acid sandy soils.

DEEP, LOAMY AND CLAYEY ALLUVIAL SOILS

- 10 TINN-PURSLEY: Deep, nearly level, moderately alkaline loamy and clayey soils.

*Based on 1:250,000 scale map of the major 10-5

Comp. Dec. 1955

U. S. DEPARTMENT OF AGRICULTURE
SOIL CONSERVATION SERVICE
TEXAS AGRICULTURAL EXPERIMENT STATION
GENERAL SOIL MAP
HILL COUNTY TEXAS

Scale 1:250,000
0 1 2 3 4 Miles