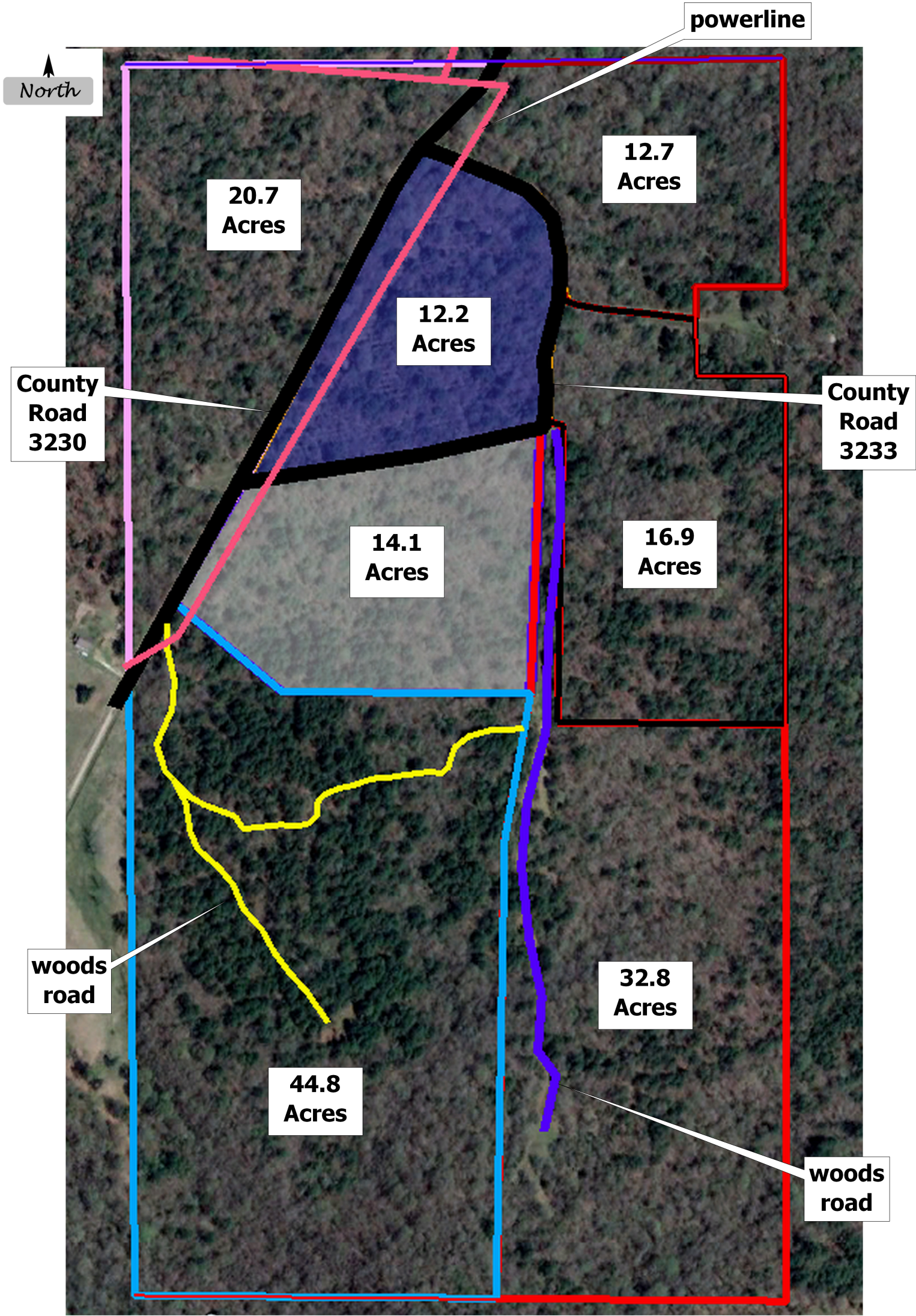


Thornton Estate - Red River County, Texas - Proposed Parcel Mapping

- Acreages are Approximate and Not Guaranteed
- Interior Parcel Lines are at Centerline of Public Roads as Applicable



Map is Illustration of Parcels being offered - Parcel Boundaries Not Yet Surveyed

Access to 32.8 Acres to be approximately 75 feet wide

Thornton Estate 154.2 Acres - Parcel Pricing Table

Approximate Acres	Listed Price Per Acre	Total Parcel Price
44.8	\$ 5,500	\$ 246,400
12.2	\$ 10,500	\$ 128,100
20.7	\$ 9,000	\$ 186,300
14.1	\$ 9,000	\$ 126,900
16.9	\$ 7,000	\$ 118,300
32.8	\$ 6,000	\$ 196,800
12.7	\$ 9,000	\$ 114,300

This map is provided for illustration purposes only, and no warranties are given or implied concerning the accuracy of the data presented. This map is not a survey plat. All boundary line locations and acreage calculations are approximations only. Users are strongly advised to independently verify all geographic and legal information.