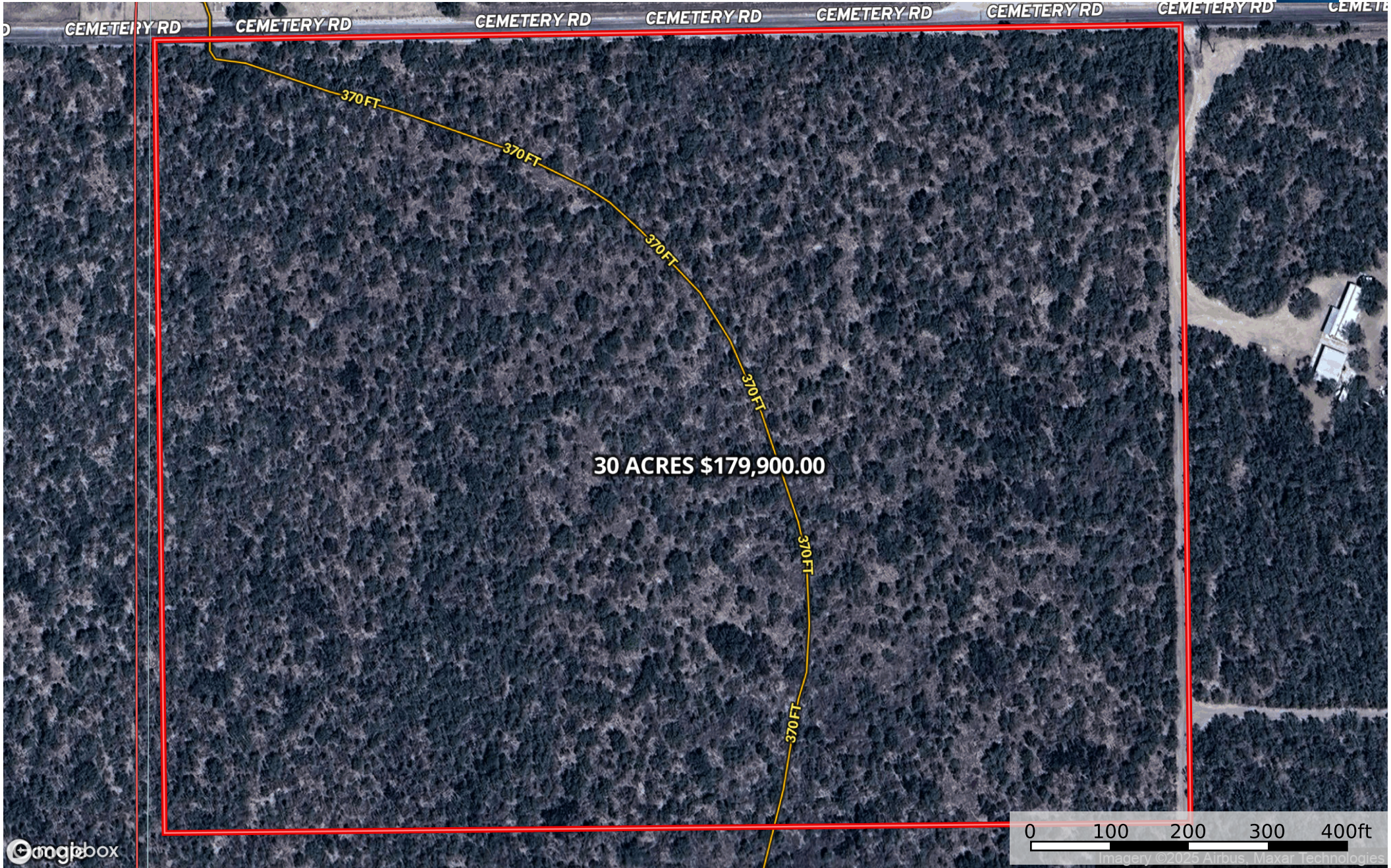


30 ACRES CEMETERY ROAD
Texas, AC +/-



- Boundary
- Wetlands
- Riparian
- Elementary Sch. Dist.
- Crude Oil
- Natural Gas
- Other
- Stream, Intermittent
- River/Creek
- Water Body
- Unified Sch. Dist.
- Secondary Sch. Dist.