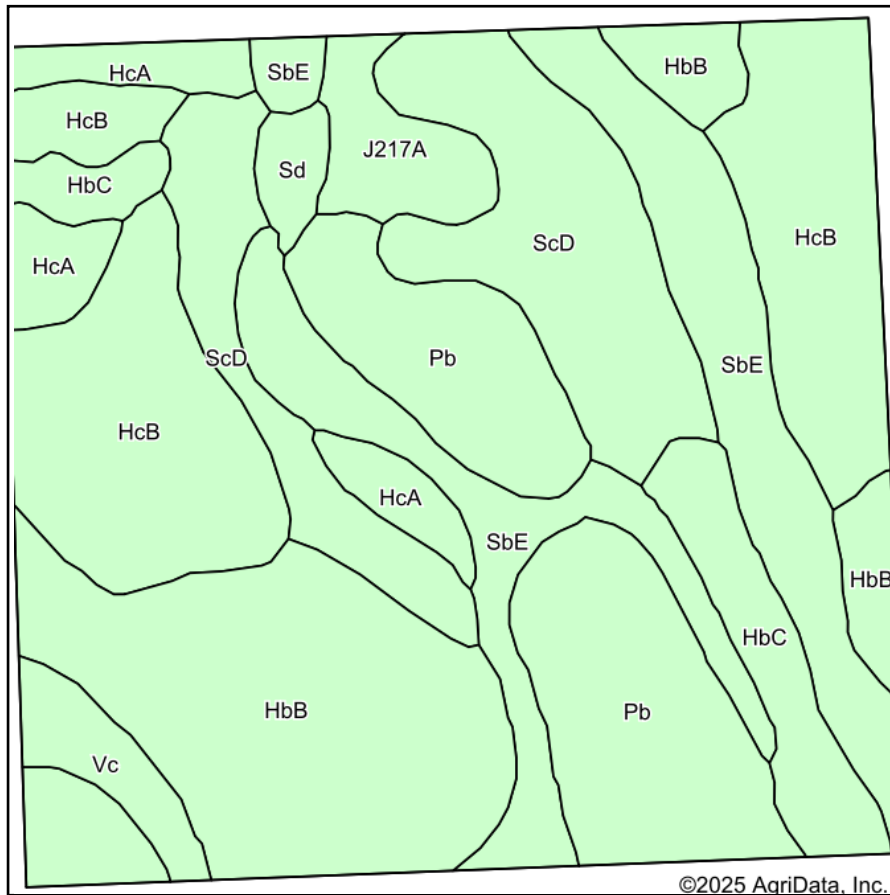
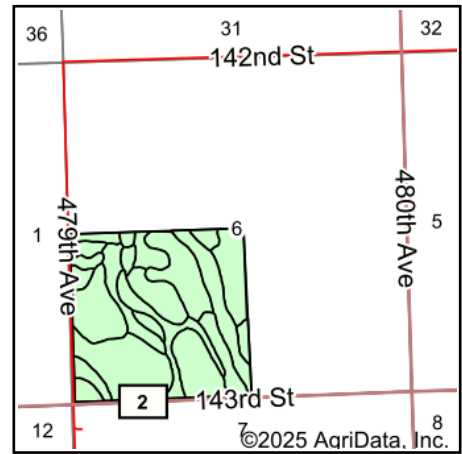


# Soils Map



Soils data provided by USDA and NRCS.



State: **South Dakota**  
 County: **Grant**  
 Location: **6-121N-47W**  
 Township: **Melrose**  
 Acres: **160**  
 Date: **6/12/2025**

**ADVANTAGE**  
*Land Co.*

Maps Provided By:  
  
 CUSTOMIZED ONLINE MAPPING  
 © AgriData, Inc. 2023 www.AgriDataInc.com



Area Symbol: SD051, Soil Area Version: 26

Code	Soil Description	Acres	Percent of field	Non-Irr Class *c	Productivity Index
HbB	Esmond-Heimdal-Sisseton complex, 2 to 6 percent slopes	31.99	20.2%	IIIe	81
HcB	Heimdal-Svea loams, 2 to 6 percent slopes	30.11	18.8%	IIe	82
SbE	Sisseton-Esmond complex, 12 to 40 percent slopes	25.83	16.1%	VIIe	23
ScD	Sisseton-Esmond-Heimdal, complex, 6 to 20 percent slopes, moderately eroded	23.89	14.9%	IVe	43
Pb	Southam silty clay loam, 0 to 1 percent slopes	22.86	14.3%	VIIIw	10
HbC	Esmond-Sisseton-Heimdal, complex, 2 to 12 percent slopes, moderately eroded	8.72	5.4%	IVe	58
HcA	Heimdal-Svea loams, 0 to 2 percent slopes	6.87	4.3%	Iw	87
J217A	Parnell silty clay loam, frequently ponded, 0 to 1 percent slopes	4.56	2.8%	Vw	31
Vc	Vallers-Tonka complex	3.42	2.1%	IVw	52
Sd	Svea loam, 1 to 3 percent slopes	1.75	1.1%	IIe	96
<b>Weighted Average</b>				<b>4.36</b>	<b>53.1</b>

\*c: Using Capabilities Class Dominant Condition Aggregation Method

Soils data provided by USDA and NRCS.