

🌿 Soil Report



- Acres
- Capabilities
- WAPI

📐 All Polygons: 40.02 ac

Code	Description	Acres	%	CPI	NCCPI	CAP	?
FrB	Freestone fine sandy loam, 1 to 3 percent slopes	37.66	94.1%	-	72	3e	?
DrA	Derly, frequently ponded-Raino complex, 0 to 1 percent slopes	1.19	2.97%	-	37	4w	?
W	Water	1.17	2.92%	-	-	8	?
Totals 40.02 ac ?		0 CPI Average		68.85 NCCPI Average		3.18 Cap. Average	

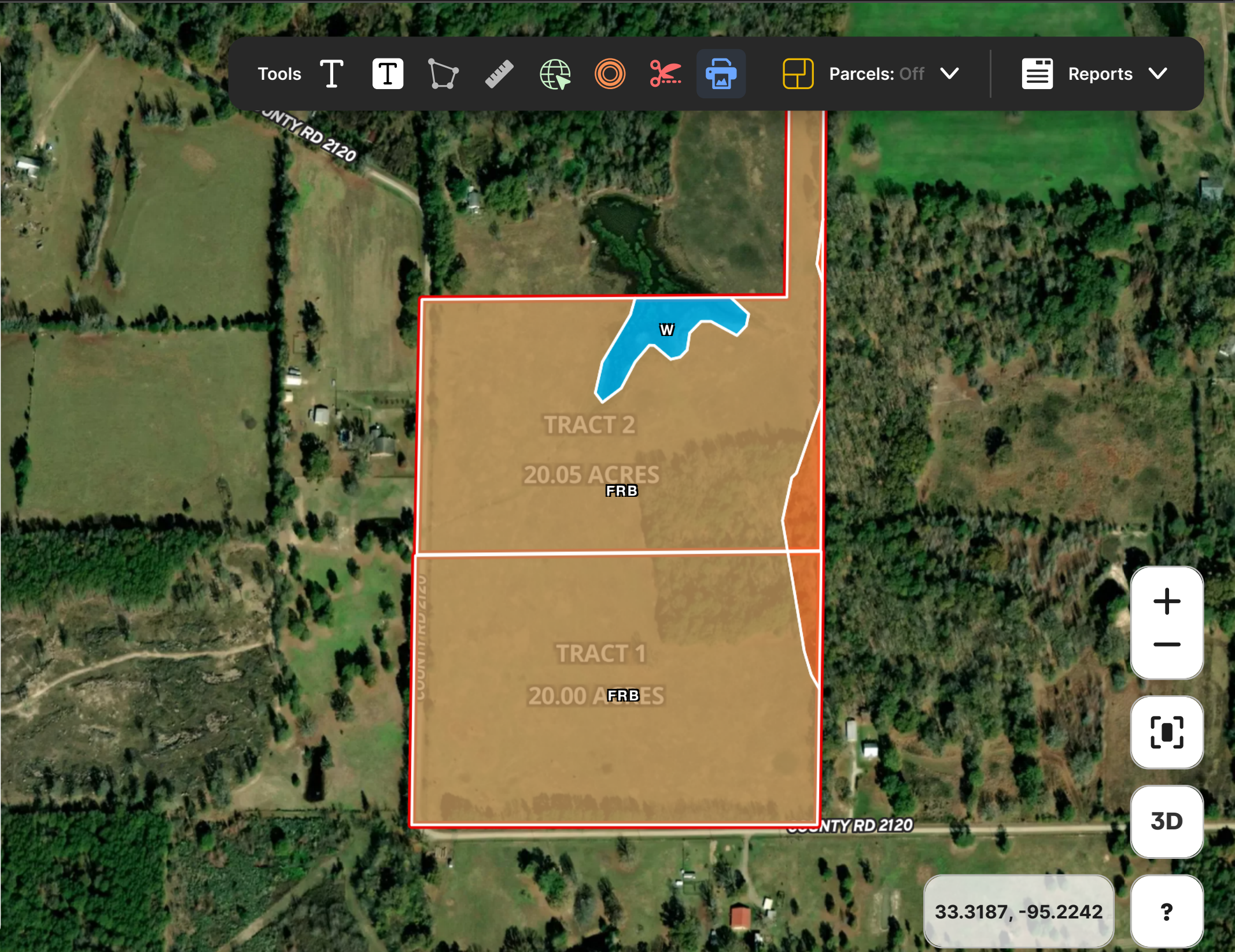
- Print 🖨️
- Delete 🗑️

Tools

T T

Parcels: Off ▼

Reports ▼



+

-

3D

?

33.3187, -95.2242