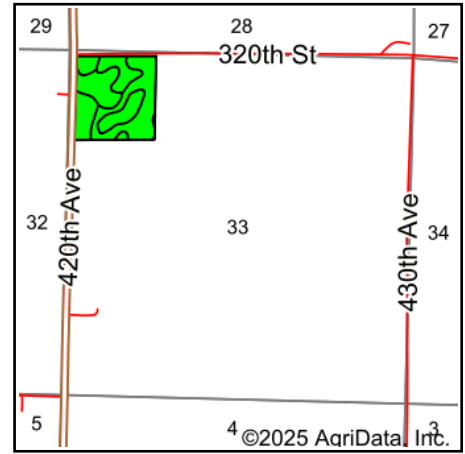
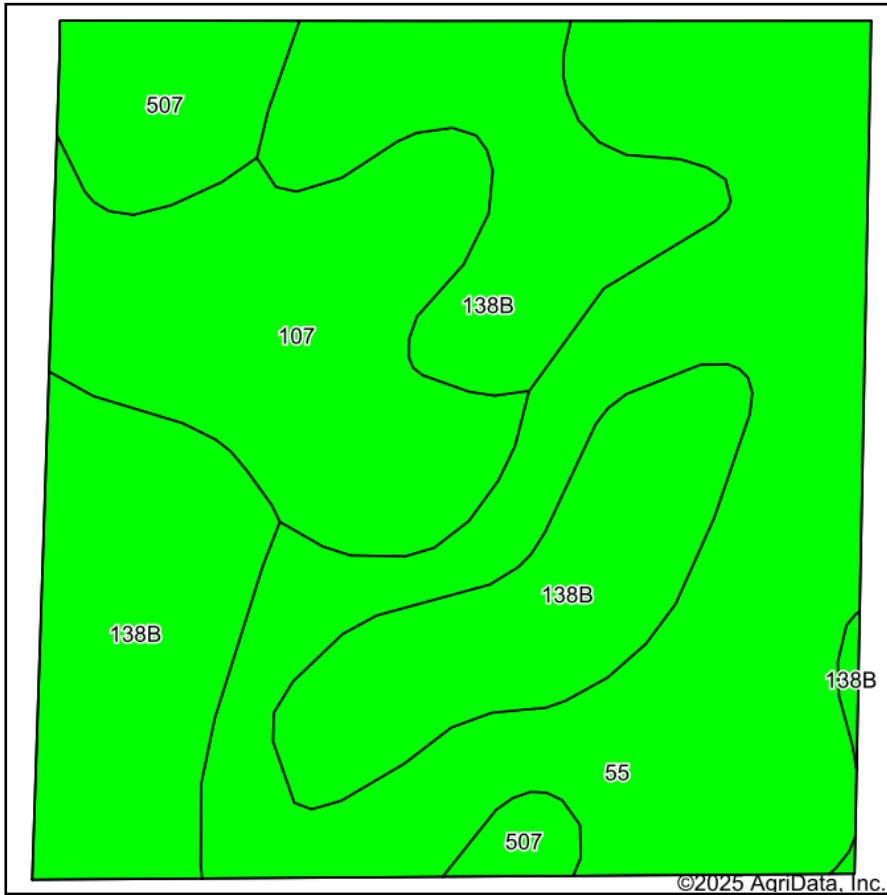


# Soils Map



State: **Iowa**  
 County: **Palo Alto**  
 Location: **33-97N-33W**  
 Township: **Walnut**  
 Acres: **36.08**  
 Date: **5/21/2025**



Maps Provided By:  
  
 CUSTOMIZED ONLINE MAPPING  
 © AgriData, Inc. 2023 www.AgriDataInc.com



Area Symbol: IA147, Soil Area Version: 31

Code	Soil Description	Acres	Percent of field	CSR2 Legend	Non-Irr Class *c	CSR2**	CSR
55	Nicollet clay loam, 1 to 3 percent slopes	13.85	38.4%		Iw	89	84
138B	Clarion loam, 2 to 6 percent slopes	13.27	36.8%		Ile	89	76
107	Webster clay loam, 0 to 2 percent slopes	6.65	18.4%		Ilw	86	79
507	Canisteo clay loam, 0 to 2 percent slopes	2.31	6.4%		Ilw	84	74
Weighted Average					1.62	88.1	79.5

\*\*IA has updated the CSR values for each county to CSR2.

\*c: Using Capabilities Class Dominant Condition Aggregation Method