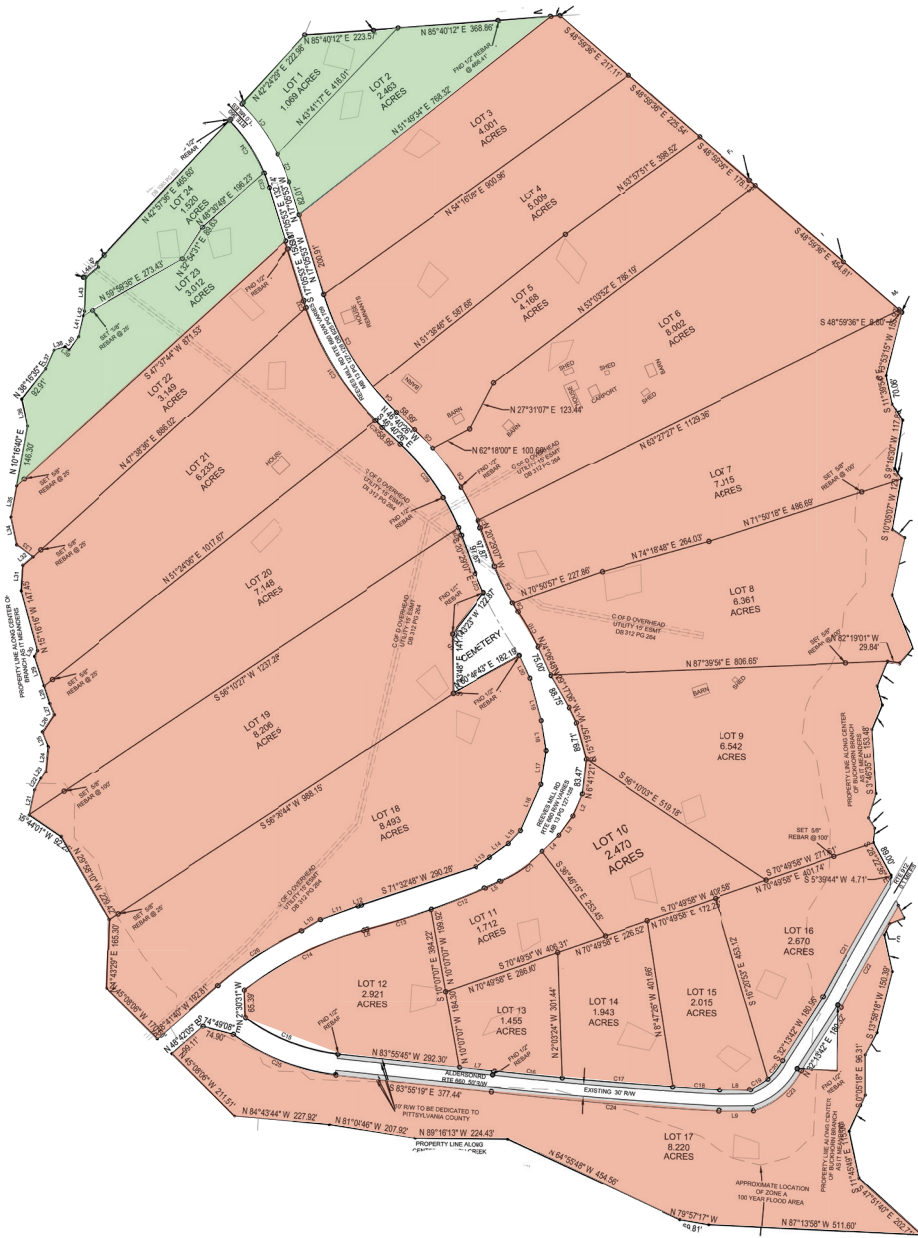


# REEVES MILL FARM

## BEAUTIFUL ACREAGE IN PITTSYLVANIA COUNTY



|    |             |          |
|----|-------------|----------|
| 1  | 1.06 acres  | \$24,900 |
| 2  | 2.463 acres | \$29,900 |
| 3  | 4.001 acres | SOLD     |
| 4  | 5.001 acres | SOLD     |
| 5  | 4.157 acres | SOLD     |
| 6  | 8.005 acres | SOLD     |
| 7  | 7.000 acres | SOLD     |
| 8  | 6.356 acres | SOLD     |
| 9  | 6.539 acres | SOLD     |
| 10 | 2.473 acres | SOLD     |
| 11 | 1.741 acres | SOLD     |
| 12 | 2.836 acres | SOLD     |
| 13 | 1.473 acres | SOLD     |
| 14 | 2.001 acres | SOLD     |
| 15 | 2.067 acres | SOLD     |
| 16 | 2.815 acres | SOLD     |
| 17 | 8.673 acres | SOLD     |
| 18 | 8.530 acres | SOLD     |
| 19 | 8.216 acres | SOLD     |
| 20 | 7.105 acres | SOLD     |
| 21 | 6.285 acres | SOLD     |
| 22 | 3.176 acres | SOLD     |
| 23 | 3.012 acres | \$28,900 |
| 24 | 1.503 acres | \$25,900 |

06/06/2025

**COUNTRYSIDE LAND COMPANY, LC**  
 (540) 886-6155 | LAND@COUNTRYSIDEINC.BIZ | VIRGINIALANDDIRECT.COM



**Covenants**

- No Single-wide Mobile Homes
- No Unlicensed Vehicles Visible from the Street
- No Intensive Agriculture

**OFFERED BY MEADESIDE, LLC.**

[virginalanddirect.com](http://virginalanddirect.com) | [land@countrysideinc.biz](mailto:land@countrysideinc.biz) | 540.886.6155