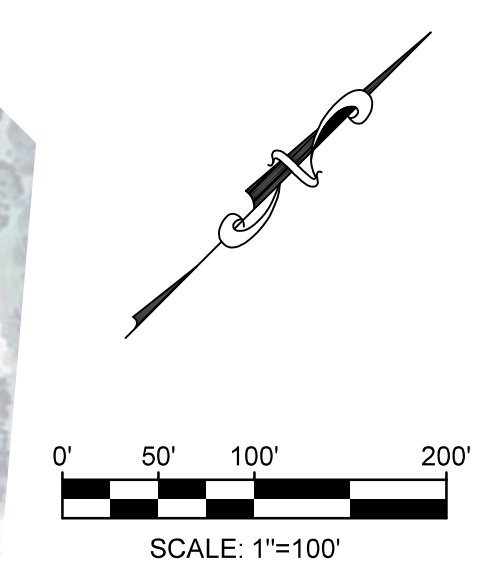
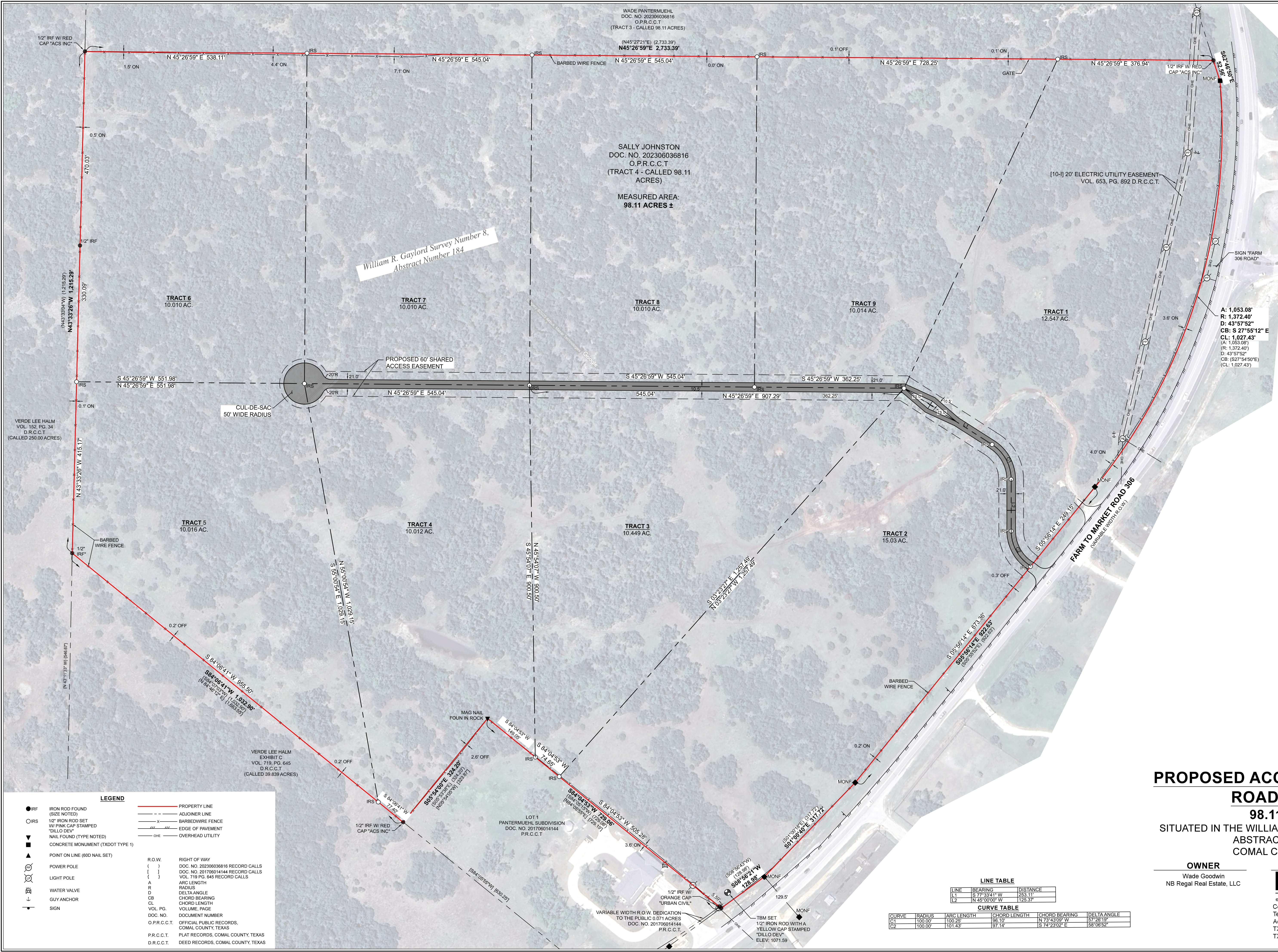


DILLO DEV SERVICES, LLC
 C:\Users\jv\OneDrive - Dillo Development Services, LLC\Documents\2025\25027_58 Acres Pl. 306\03_Survey\03_CAD\25027_58 Acres Pl. 306\UPRINTED_7-25.dwg Aug 07:20:05 - 12:00pm dls



LEGEND

● IRF	IRON ROD FOUND (SIZE NOTED)	—	PROPERTY LINE
○ IRS	1/2" IRON ROD SET	- - -	ADJOINER LINE
○	1/2" IRON ROD SET WITH PINK CAP STAMPED "DILLO DEV"	- x -	BARBED WIRE FENCE
▼	NAIL FOUND (TYPE NOTED)	—	EDGE OF PAVEMENT
■	CONCRETE MONUMENT (TXDOT TYPE 1)	—	OVERHEAD UTILITY
▲	POINT ON LINE (60D NAIL SET)		
⊙	POWER POLE		
⊙	LIGHT POLE		
⊙	WATER VALVE		
⊙	GUY ANCHOR		
⊙	SIGN		

R.O.W.	RIGHT OF WAY
()	DOC. NO. 202306036816 RECORD CALLS
[]	DOC. NO. 201706014144 RECORD CALLS
{ }	VOL. 719, PG. 645 RECORD CALLS
A	ARC LENGTH
R	RADIUS
D	DELTA ANGLE
CB	CHORD BEARING
CL	CHORD LENGTH
VOL. PG.	VOLUME, PAGE
DOC. NO.	DOCUMENT NUMBER
O.P.R.C.C.T.	OFFICIAL PUBLIC RECORDS, COMAL COUNTY, TEXAS
P.R.C.C.T.	PLAT RECORDS, COMAL COUNTY, TEXAS
D.R.C.C.T.	DEED RECORDS, COMAL COUNTY, TEXAS

LINE TABLE

LINE	BEARING	DISTANCE
L1	S 77° 33' 41" W	253.17'
L2	N 45° 26' 59" E	125.37'

CURVE TABLE

CURVE	RADIUS	ARC LENGTH	CHORD LENGTH	CHORD BEARING	DELTA ANGLE
C1	100.00'	100.25'	96.10'	N 73° 43' 09" W	57° 26' 19"
C2	100.00'	101.43'	97.14'	S 74° 23' 02" E	68° 08' 52"

PROPOSED ACCESS EASEMENT & ROAD LAYOUT

98.11 ACRES
 SITUATED IN THE WILLIAM R. GAYLORD SURVEY NO. 8,
 ABSTRACT NUMBER 184
 COMAL COUNTY, TEXAS

OWNER
 Wade Goodwin
 NB Regal Real Estate, LLC

SURVEYOR
DILLO DEV
 engineering | surveying | planning
 Contact: Seth Reichenau, RPLS
 Tel: (830) 282-0333 Email: info@dillodev.com
 Address: 967 Broadway, New Braunfels, TX 78130
 TX Engineering Firm No. F-22833
 TX Surveying Firm No. 10194711

JOB NO. 25027
 SHEET 1 OF 1