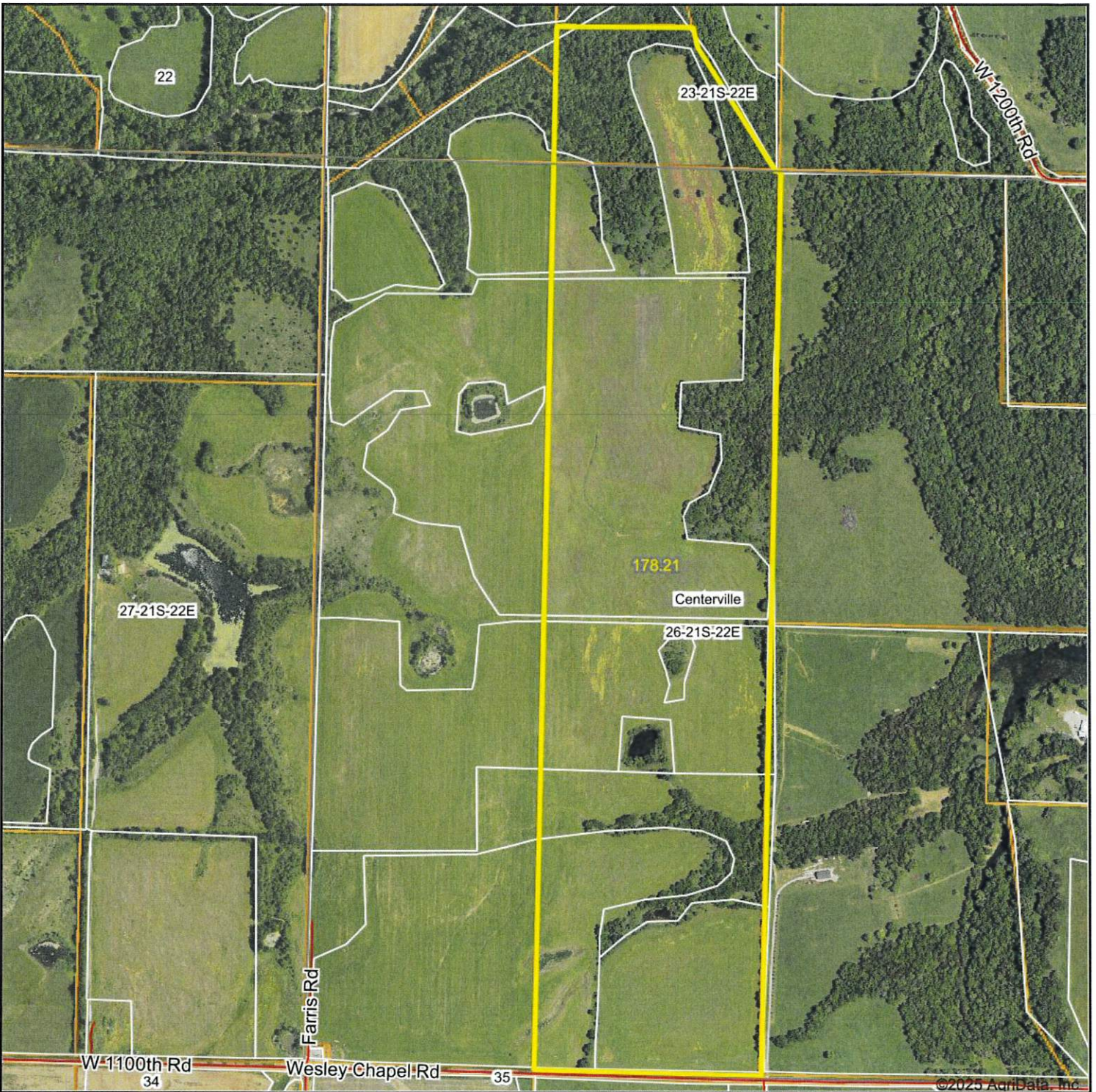


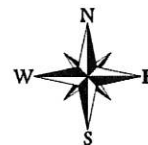
Aerial Map



Boundary Center: 38° 11' 27.26, -94° 57' 47.52



26-21S-22E
Linn County
Kansas

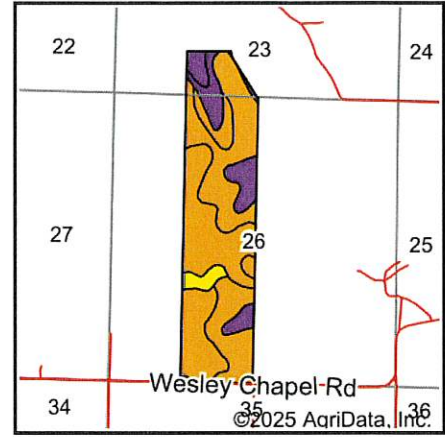
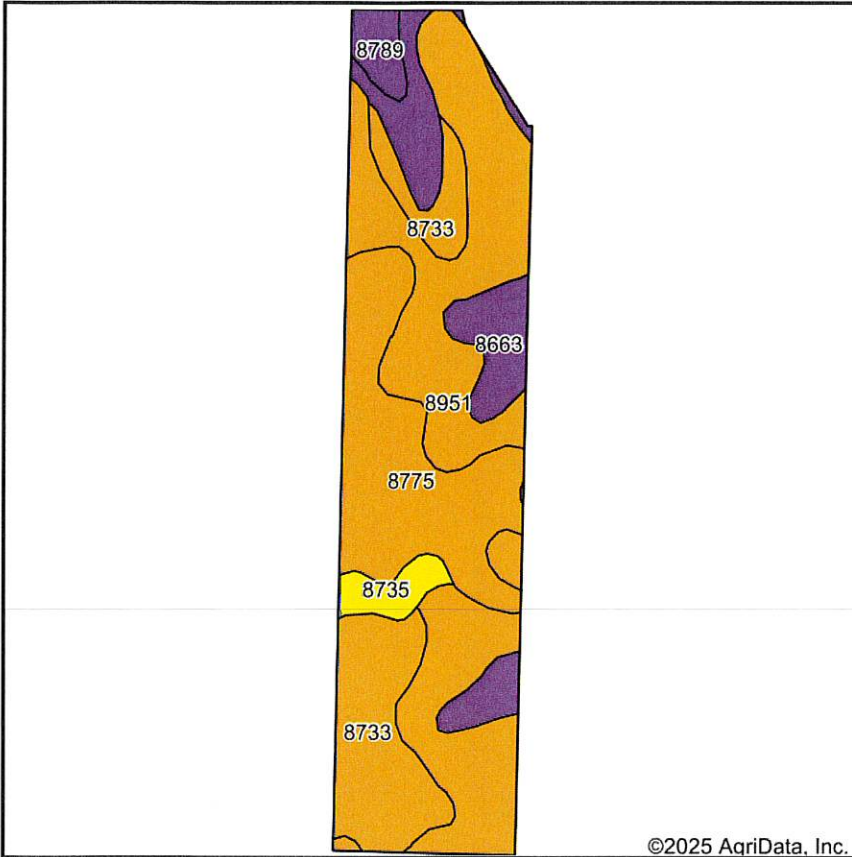


Maps Provided By:
 **surety**
CUSTOMIZED ONLINE MAPPING
© AgriData, Inc. 2023 www.AgriDataInc.com

8/26/2025

Field borders provided by Farm Service Agency as of 5/21/2008.

Soils Map



State: **Kansas**
 County: **Linn**
 Location: **26-21S-22E**
 Township: **Centerville**
 Acres: **178.21**
 Date: **8/26/2025**



Maps Provided By:



Soils data provided by USDA and NRCS.

©2025 AgriData, Inc.

Area Symbol: KS107, Soil Area Version: 24

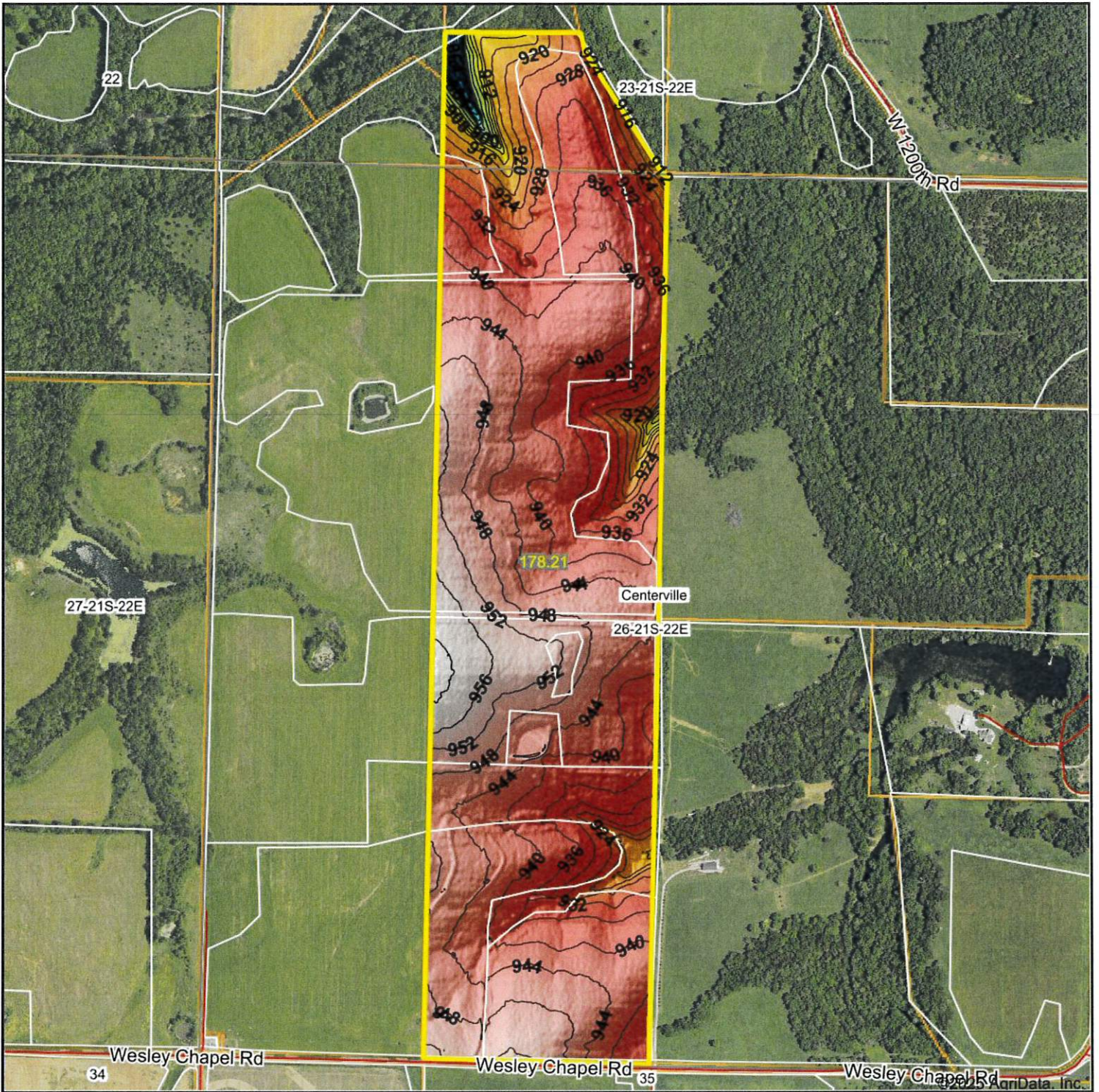
Code	Soil Description	Acres	Percent of field	Non-Irr Class Legend	Non-Irr Class *c	Range Production (lbs/acre/yr)	*n NCCPI Soybeans
8951	Wagstaff silty clay loam, 1 to 3 percent slopes	73.90	41.4%		IIIe	4968	43
8775	Kenoma silt loam, 1 to 3 percent slopes	40.10	22.5%		IIIe	3888	59
8733	Eram silty clay loam, 1 to 3 percent slopes	31.12	17.5%		IIIe	4100	39
8663	Clareson-Rock outcrop complex, 3 to 15 percent slopes	23.45	13.2%		VIe	3398	27
8735	Eram silty clay loam, 3 to 7 percent slopes	5.19	2.9%		IVe	4116	41
8789	Lebo channery silty clay loam, 15 to 30 percent slopes	4.45	2.5%		VIe	4755	22
Weighted Average					3.50	4336.7	*n 43.2

*n: The aggregation method is "Weighted Average using all components"

*c: Using Capabilities Class Dominant Condition Aggregation Method

Soils data provided by USDA and NRCS.

Topography Hillshade



Low Elevation High



Maps Provided By:



© AgriData, Inc. 2023 www.AgriDataInc.com

Field borders provided by Farm Service Agency as of 5/21/2008.

Source: USGS 3 meter dem

Interval(ft): 4

Min: 849.1

Max: 961.3

Range: 112.2

Average: 939.0

Standard Deviation: 11.71 ft

0ft 915ft 1829ft

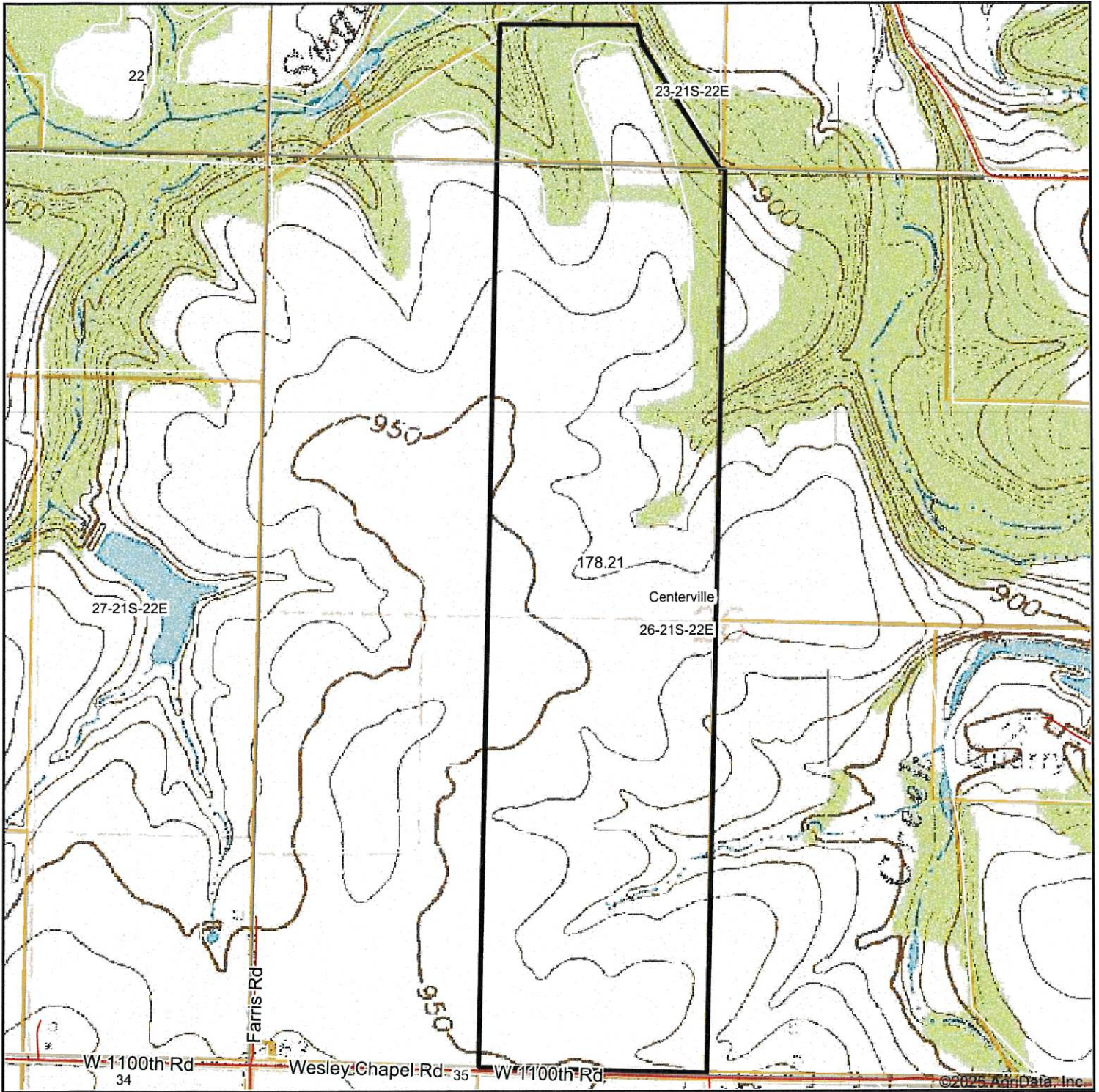


8/26/2025

26-21S-22E
Linn County
Kansas

Boundary Center: 38° 11' 27.26, -94° 57' 47.52

Topography Map



©2025 AgriData, Inc.

Map Center: 38° 11' 27.26, -94° 57' 51.58



Maps Provided By:



© AgriData, Inc. 2023 www.AgridataInc.com

26-21S-22E
Linn County
Kansas



8/27/2025

Field borders provided by Farm Service Agency as of 5/21/2008.