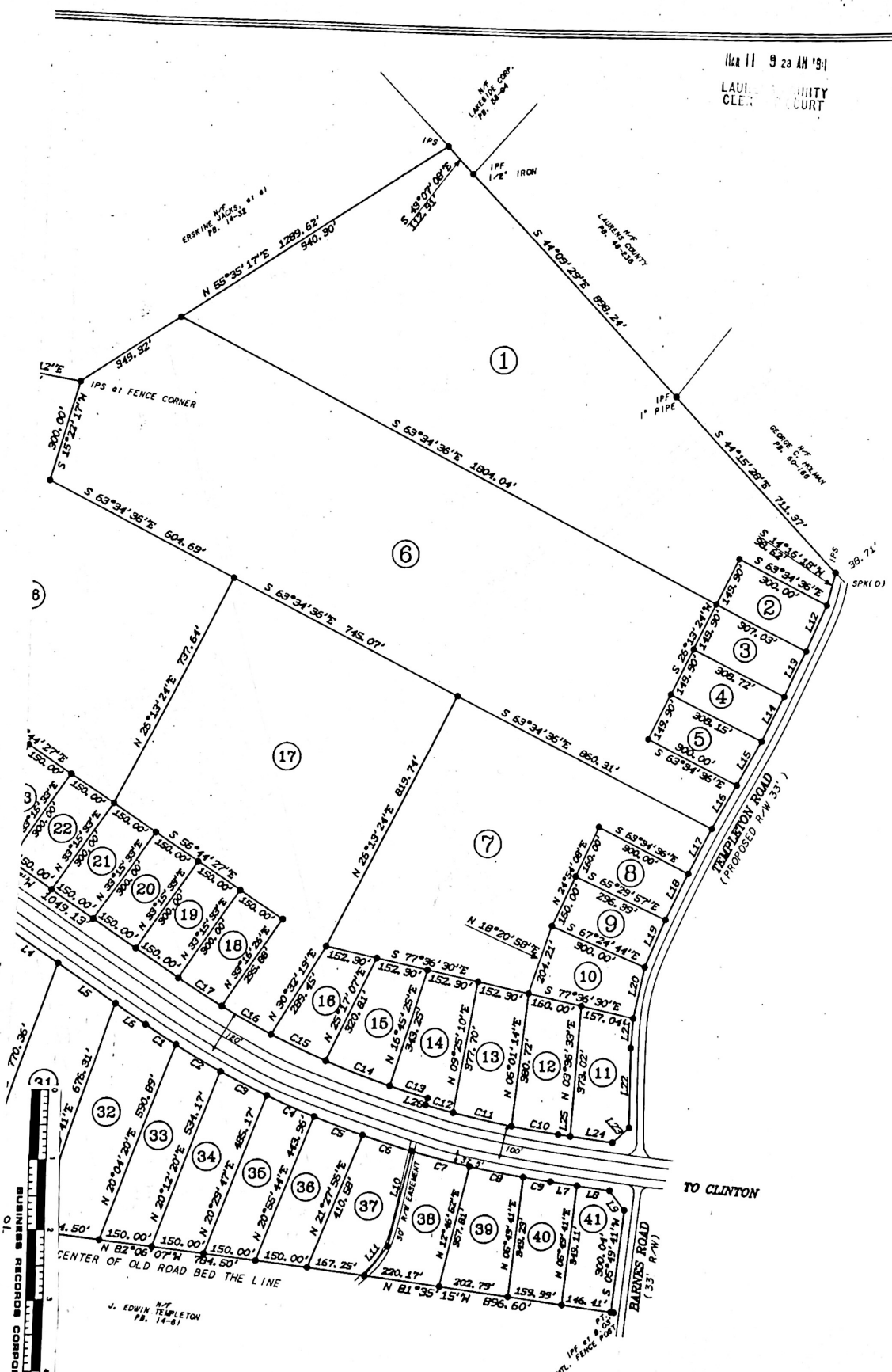


Jan 11 9 23 AM '84
 LAURENS COUNTY
 CLERK OF COURT

Magnetic 1961
 (PB. 8, pg. 141)



In the best of my knowledge, information, and belief, the above survey was made in accordance with the Minimum Standards Manual for Land Surveying in South Carolina, and meets the requirements for a Class B survey as defined in the said manual.

- LEGEND**
- IPF IRON PIN FOUND
 - IPF IRON PIN SET, 5/8" REBAR
 - SPK SPIKE
 - N/C NAIL & CAP
 - C.M. CONC. MONUMENT
 - PK "PK" NAIL
 - E- OVERHEAD UTILITIES
 - X- FENCE

* ALL CORNERS MONUMENTED WITH 5/8" REBAR EXCEPT AS NOTED.

SEAL SOUTH CAROLINA PROFESSIONAL LAND SURVEYOR No. 1072 H. TARBERN FEB 4 1984 SC Reg N 11072	SURVEY FOR: M.A. RAMAGE ESTATE		
	STATE OF SOUTH CAROLINA		COUNTY: LAURENS
	DATE: 29 JANUARY 1984	TMS: 304-00-00-003	Dwg. No. 93426 B
	Ref PB VARIOUS	Ref DB PF 395-4	Part Chief F.M.T.
ADTECH SURVEYING, INC. Professional Land Surveyor 101 East Fifth Street Clinton, SC 29325			So. Car. CQA C00392