

# 0 County Road 79 | 61.8 Acres



## For Sale

\$225,000

## About the Property

Just in time for hunting season, 61.8 acres of rolling ridges and a hardwood bottom provide a secluded recreational tract ready for you to make it your own. Approximately 45 acres have been replanted in pine, while the remaining natural regeneration gives wildlife a secluded place to bed and reason to stay on the property. A wet weather branch winds through the middle of the property shaded by hardwoods that form a natural travel corridor for game. A network of 4x4 trails makes it easy to navigate to the multiple green fields and two shooting houses. Beyond its recreational appeal, the tract holds a touch of history as well. It lies only a short distance from the legendary Natchez Trace, a travel route used by Native Americans, traders, and pioneers moving through the region. Owning land near such a storied passage adds both character and a sense of heritage to the property. For those who love to fish, Waterloo Boat Ramp is only an 8-mile drive and Florence, AL, with its shopping, dining, and conveniences, is only 30 minutes away.

Set just under  $\frac{3}{4}$  of a mile down a well-kept gravel county road, the tract is easy to reach while still offering the peace and quiet of the countryside. For those seeking a private getaway with strong recreational value, this property checks all the boxes.

## Facts and Features

Lauderdale County, Alabama

0 County Road 79 Waterloo, AL 35677

61.8 ± Acres

Best Use: Recreational, Investment

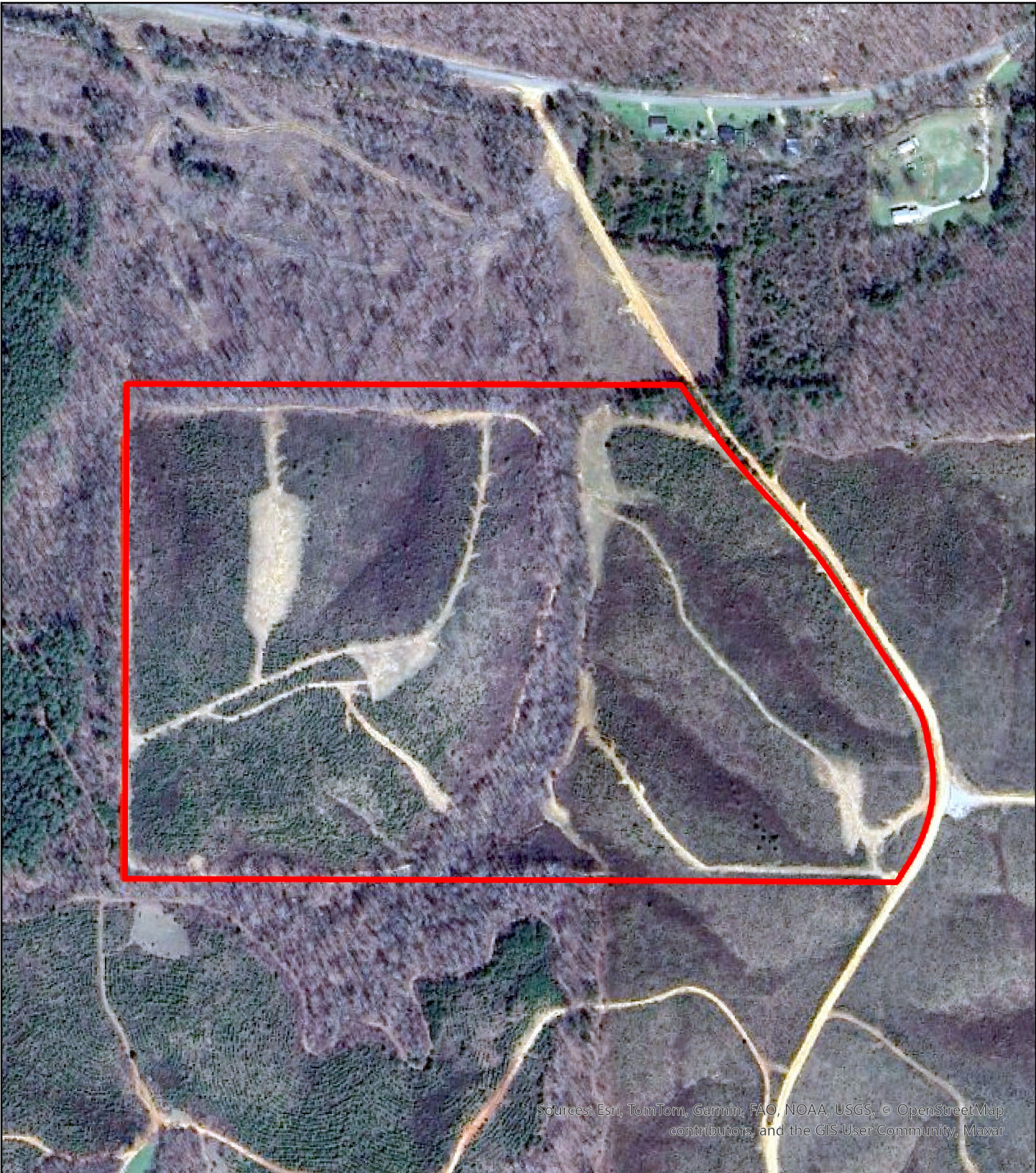


**SOUTH MAIN  
LAND REALTY**

**Stephan Tomlinson**

Broker

Office: (256) 383-8990  
srt@southmainrealty.com



Sources: Esri, TomTom, Garmin, FAO, NOAA, USGS, © OpenStreetMap contributors, and the GIS User Community, Maxar

**Legend**

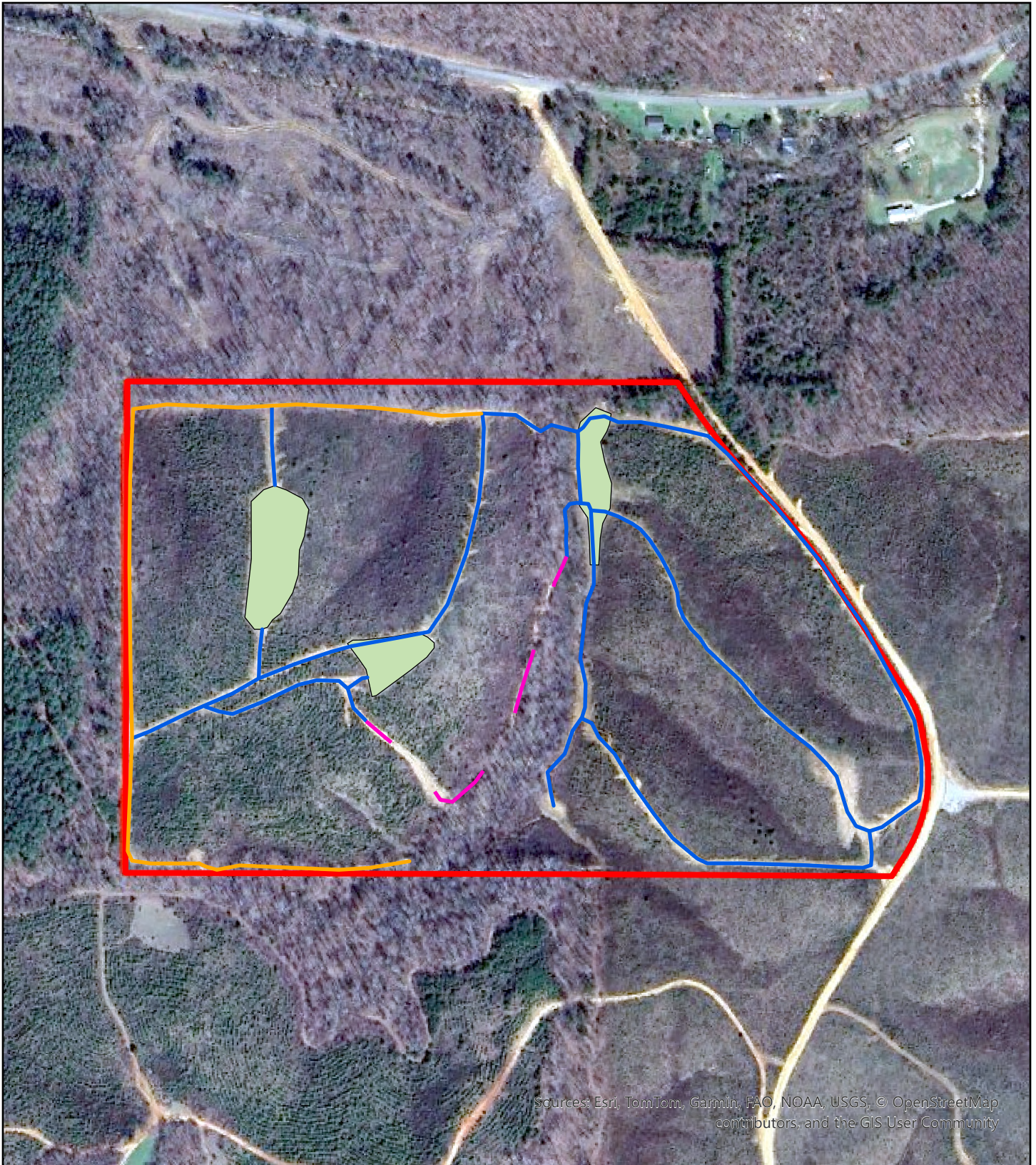
 GUT01

**GUT01**  
**Lauderdale County, AL**  
**Aerial**



South Main Realty | (256) 383-2990

0 325 650 Feet



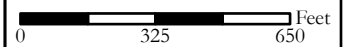
Sources: Esri, TomTom, Garmin, FAO, NOAA, USGS, © OpenStreetMap contributors, and the GIS User Community

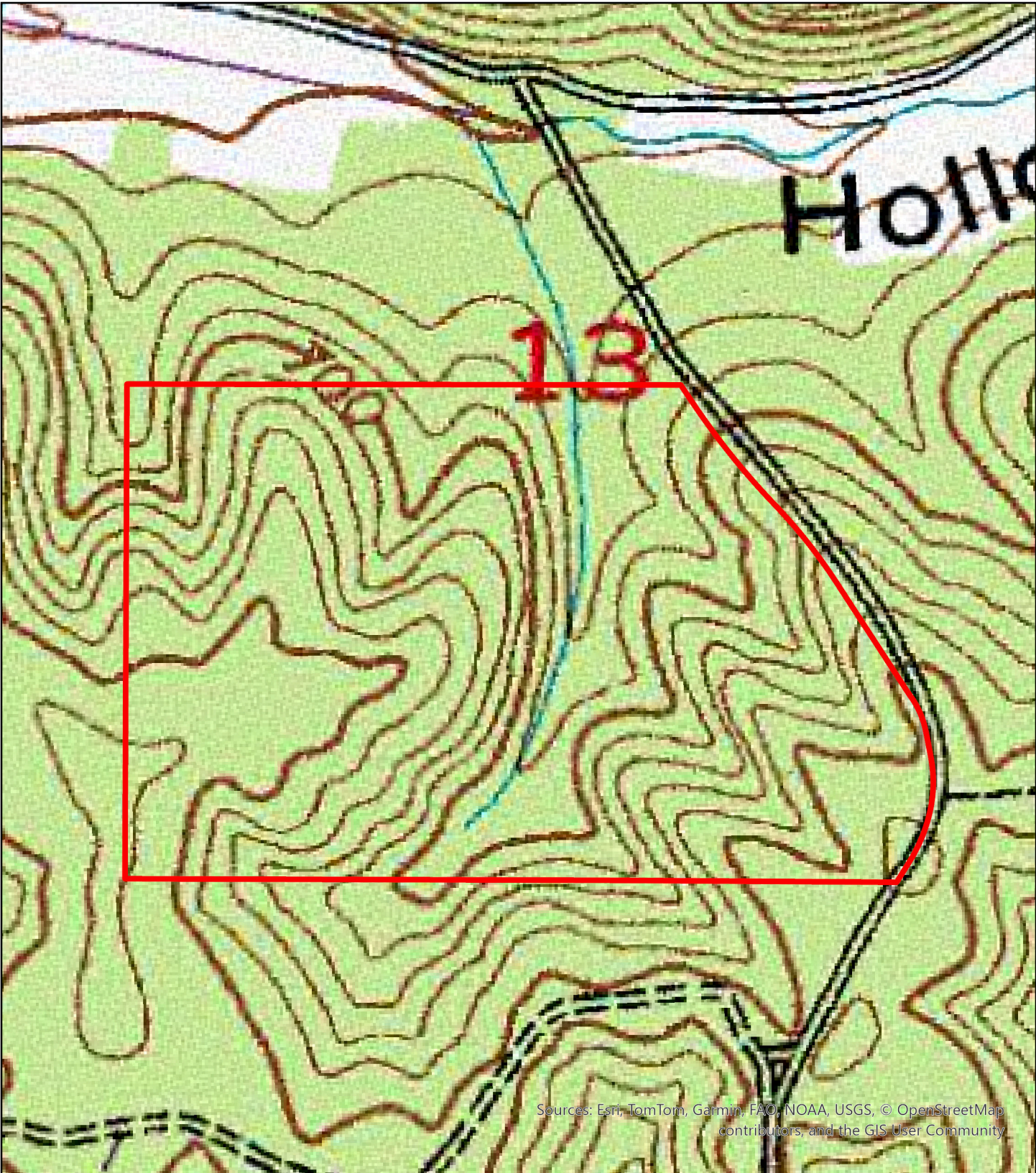
### Legend

- ▭ GUT01
- Trails
- Fireline
- - Walkable Trail
- Food Plots

## GUT01 Lauderdale County, AL Trails - Aerial

South Main Realty | (256) 383-2990





Sources: Esri, TomTom, Garmin, FAO, NOAA, USGS, © OpenStreetMap contributors, and the GIS User Community

**Legend**

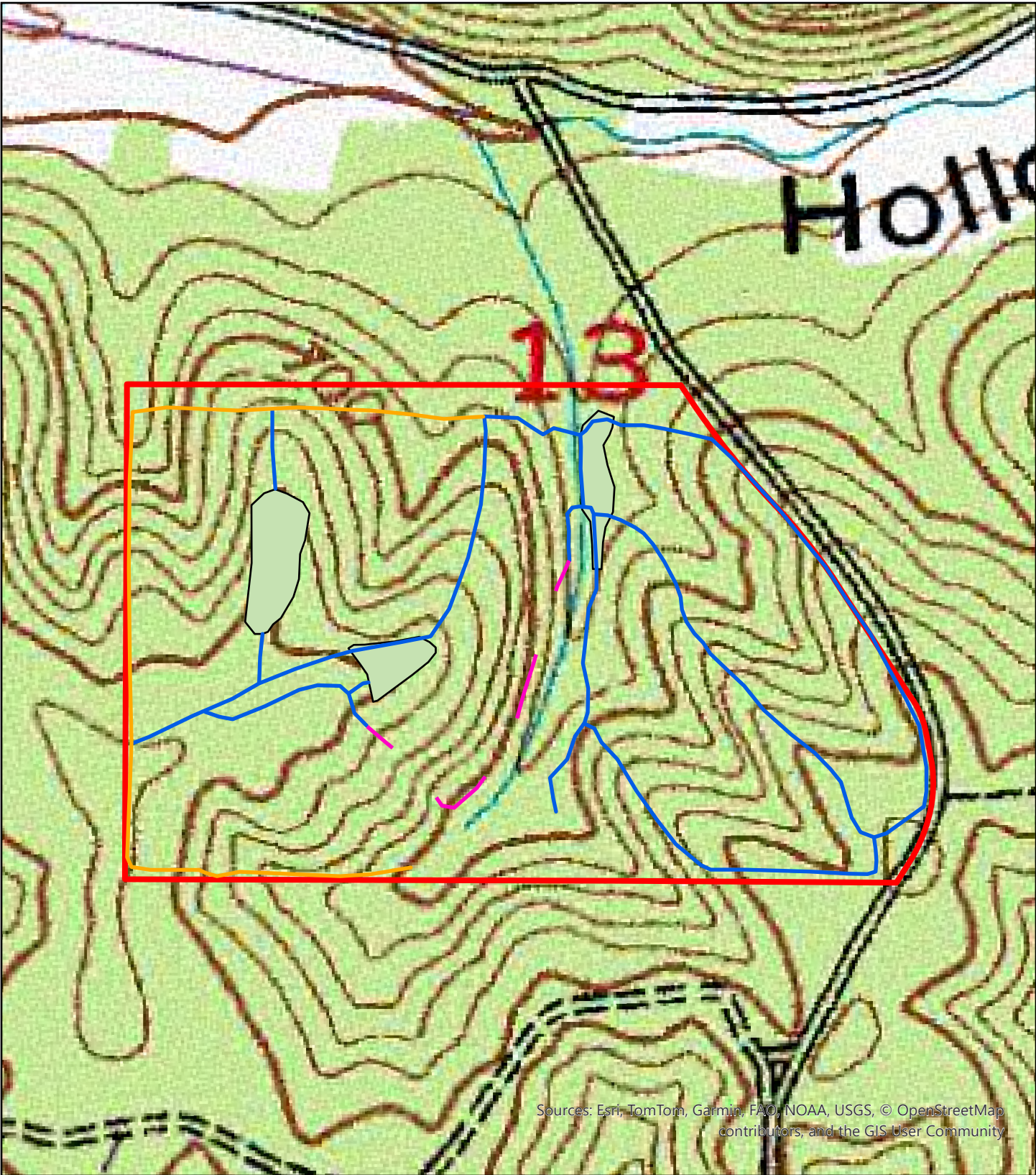
 GUT01

**GUT01**  
**Lauderdale County, AL**  
**Topography**



South Main Realty | (256) 383-2990

0 325 650 Feet



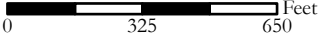
Sources: Esri, TomTom, Garmin, FAO, NOAA, USGS, © OpenStreetMap contributors, and the GIS User Community

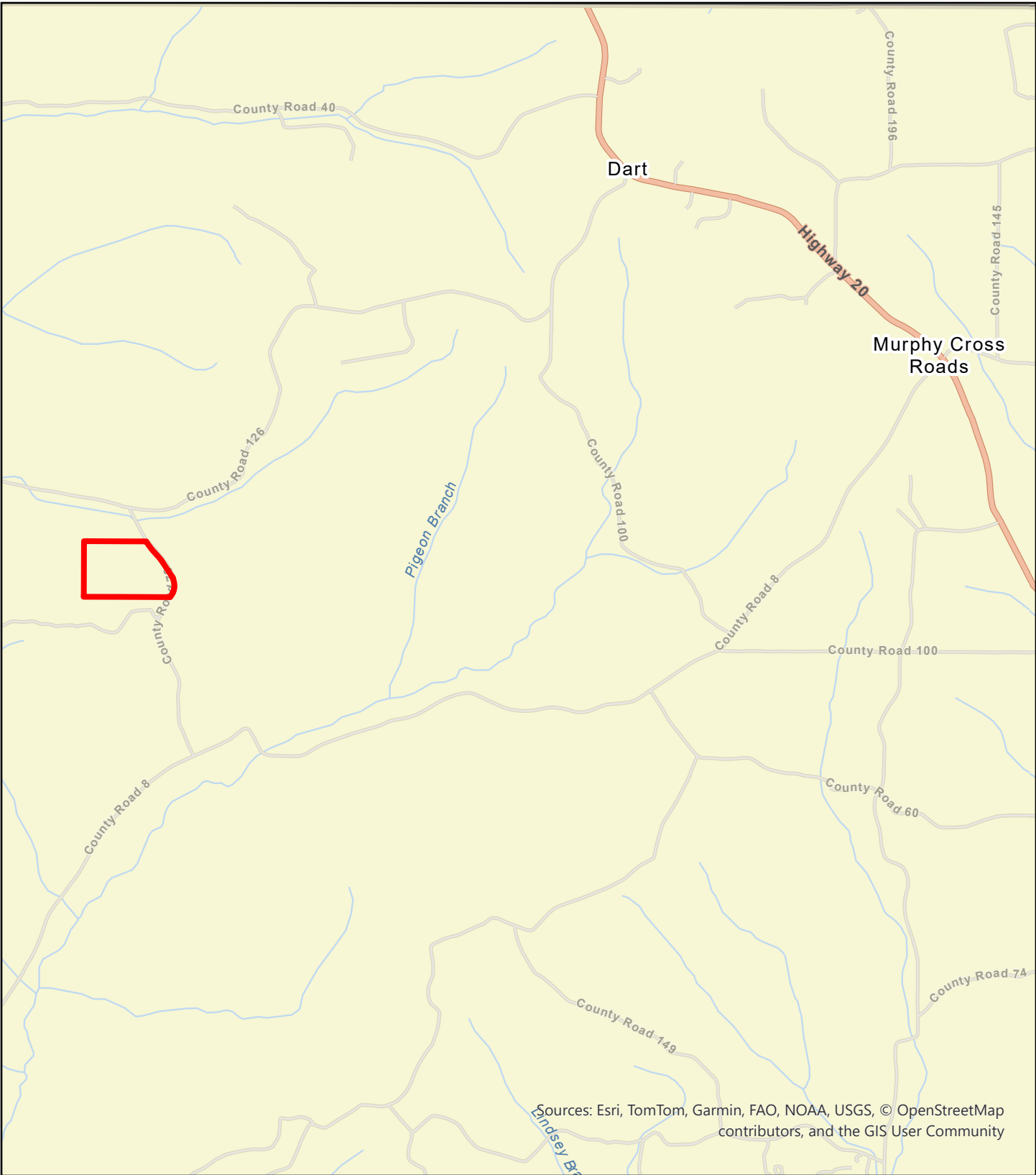
**Legend**

-  GUT01
-  Trails
-  Fireline
-  Walkable Trail
-  Food Plots

**GUT01**  
**Lauderdale County, AL**  
**Trails - Topo**

South Main Realty | (256) 383-2990





Sources: Esri, TomTom, Garmin, FAO, NOAA, USGS, © OpenStreetMap contributors, and the GIS User Community

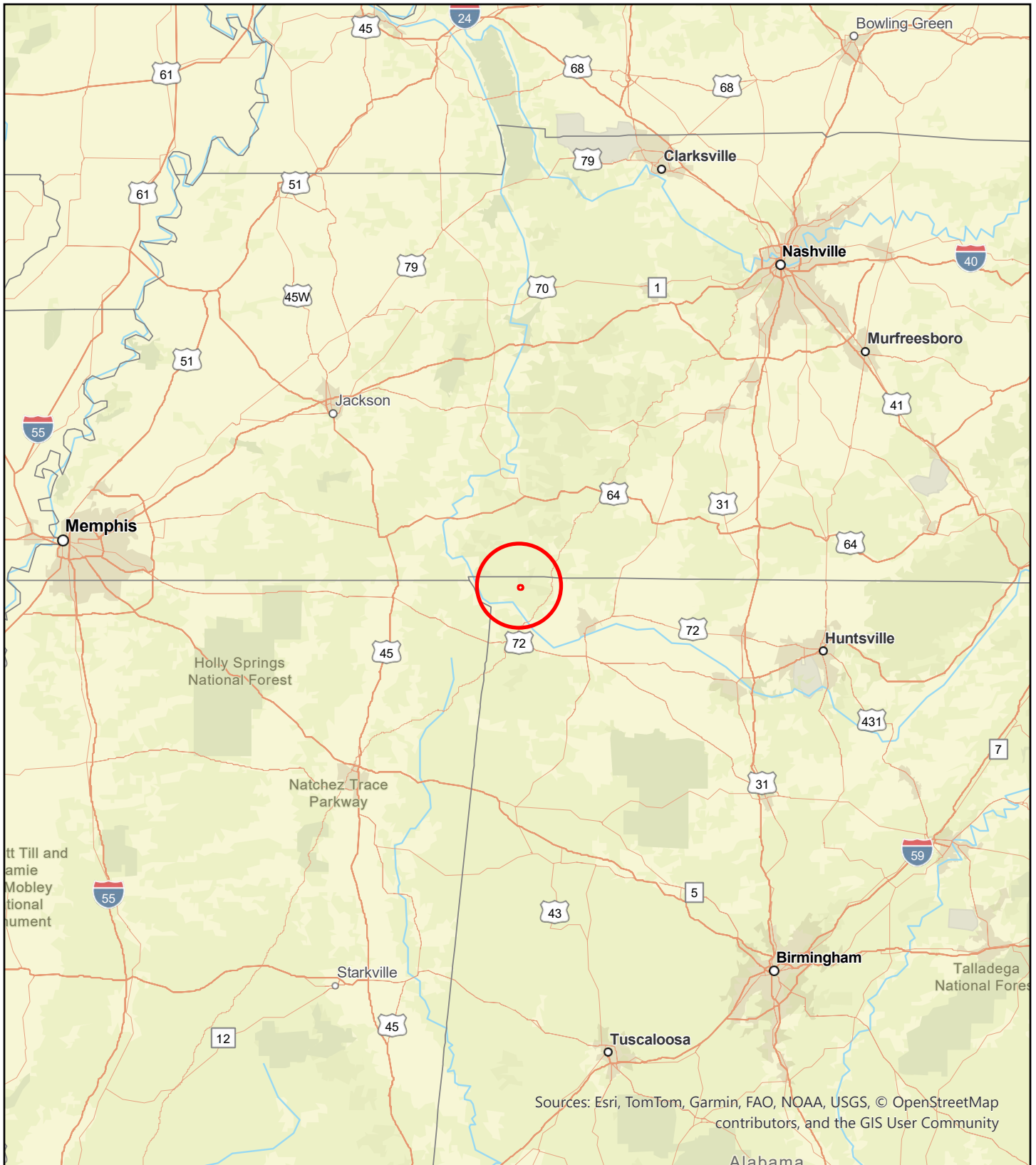
**Legend**

 GUT01

**GUT01  
Lauderdale County, AL  
Local Roads**

South Main Realty | (256) 383-2990





Sources: Esri, TomTom, Garmin, FAO, NOAA, USGS, © OpenStreetMap contributors, and the GIS User Community

**Legend**

 GUT01

**GUT01  
Lauderdale County, AL  
General Area**

South Main Realty | (256) 383-2990



 Miles