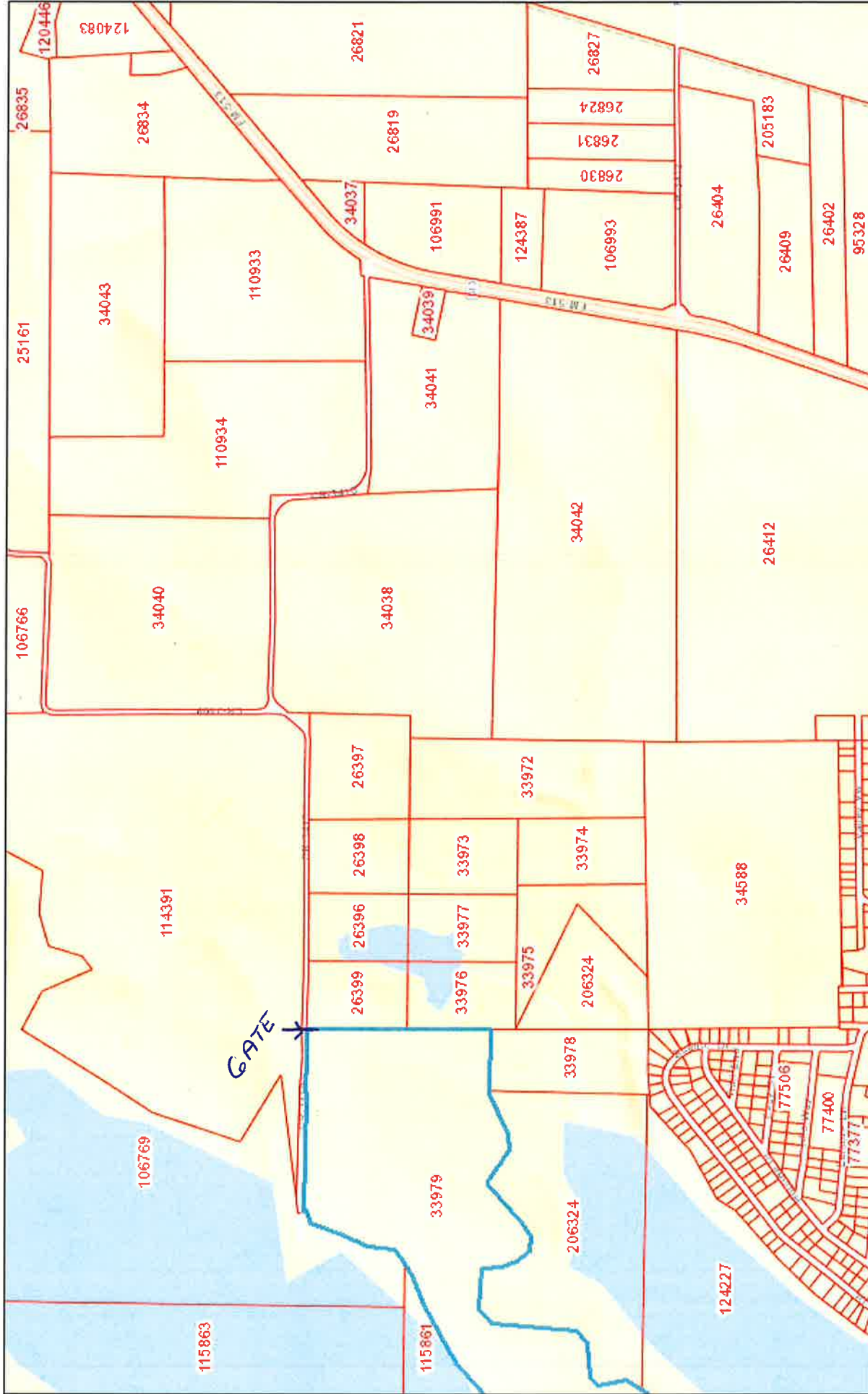


Map Title

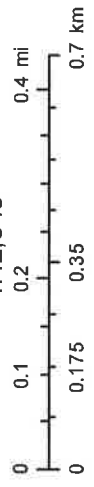


September 30, 2015

Parcels

Disclaimer: This product is for informational purposes only and has not been prepared for or be suitable for legal, engineering, or surveying purposes. It does not represent an on-the-ground survey and represents only the approximate relative location of boundaries.

1:12,846



Sources: Esri, HERE, DeLorme, USGS, Intermap, increment P Corp., NRCAN, Esri Japan, METI, Esri China (Hong Kong), Esri (Thailand).

This product and related contents are the property of the preparer of the information and are not to be used for any other purpose without the written permission of the preparer. Use is restricted for official purposes.

Hunt County Appraisal District & BIS Consulting - www.bisconsultants.com

