

**LOGS CABINS & LAND
±160 ACRES - FOR SALE**

140040 VINCENT FIRE ROAD,
TOLLHOUSE, CA 93667

PURCHASE PRICE REDUCED:

~~\$1,180,000~~
\$1,050,000



TRI *Outdoor Properties*

LAND BROKERAGE | Recreational · Agricultural · Conservation

A Division of TRI Commercial Real Estate Services, Inc.

The information in this document was obtained from sources we deem reliable; however, no warranty or representation, expressed or implied, is made as to the accuracy of the information contained herein.

Property Info ~ Logs Cabins & Land, Fresno County, CA

Address: 140040 Vincent Fire Road,
Tollhouse, Ca 93667

APN: 140-040-05

Zoning: Rc40 Residential and Recreational Land
40 acre minimum.

Elevation: Approximately 1,800 to 2,100 feet

Latitude: 36.986496 degrees North

Longitude: -119.324365 degrees West

MLS #: 225031569

Acres: **±160 Acres**

Price: **\$1,050,000**

Improvements: 2 very nice log cabins 864 sq. feet &
720 sq. feet plus many other amenities.

Terms: Cash or submit.



Description: One of the nicest homesites in the entire region located on a large stream that flows all year long most years. Two amazing quaint log cabins adorn the property both private and both overlooking the stream. Wildflowers galore and many local resident wildlife including deer, pig, ducks, geese, quail, coyote & dove. Ideal for the hunting enthusiast that likes to have his own place with a second residence for either a caretaker or second guest to stay in. Surrounded on 3 sides by government land adds to the overall hunting and recreation experience. Many amenities such as additional storage, campfire site and swimming holes. This is a property that you will impress your friends and guests as a beautiful setting. Very peaceful!

Directions: Approximately 10 Miles Southeast of Prather, near the town of Tollhouse. Call Listing Agent for directions.

Interior Property Photos ~ Logs Cabins & Land, Fresno County, CA



Property Photos ~ Logs Cabins & Land, Fresno County, CA

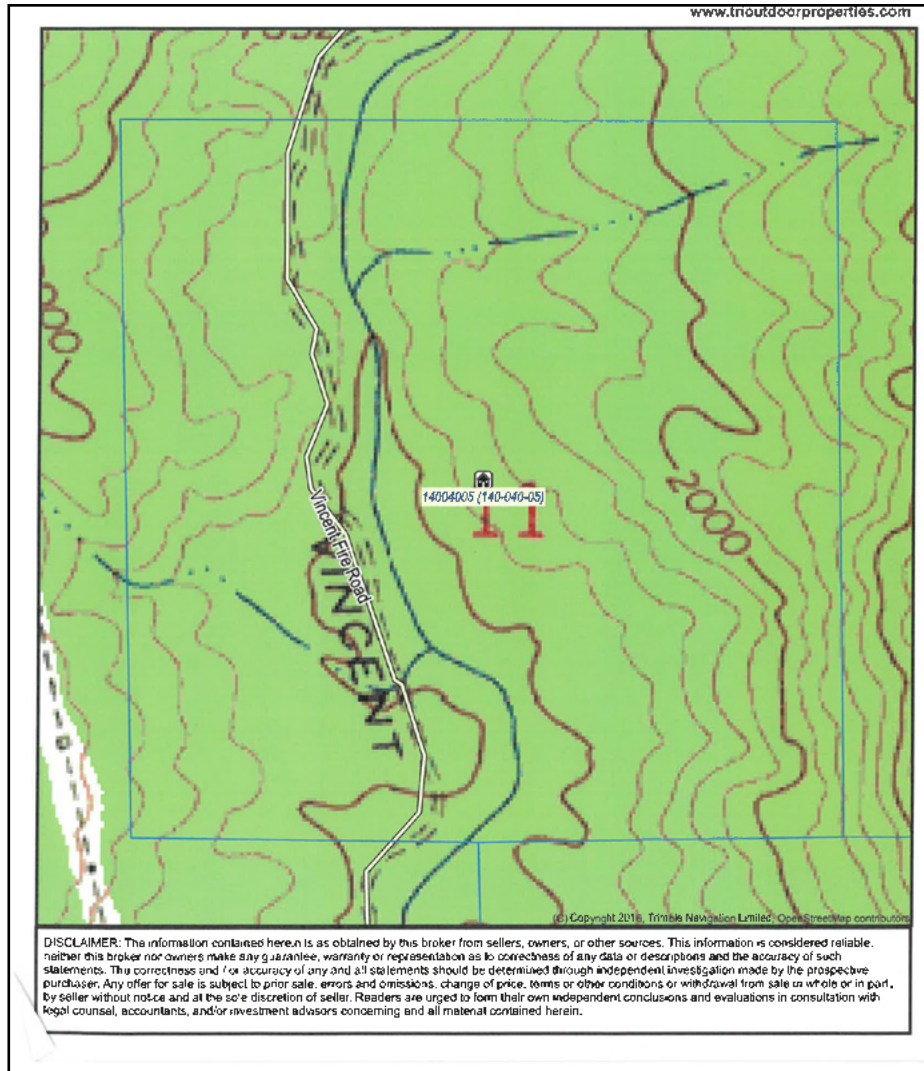


Property Photos ~ Logs Cabins & Land, Fresno County, CA

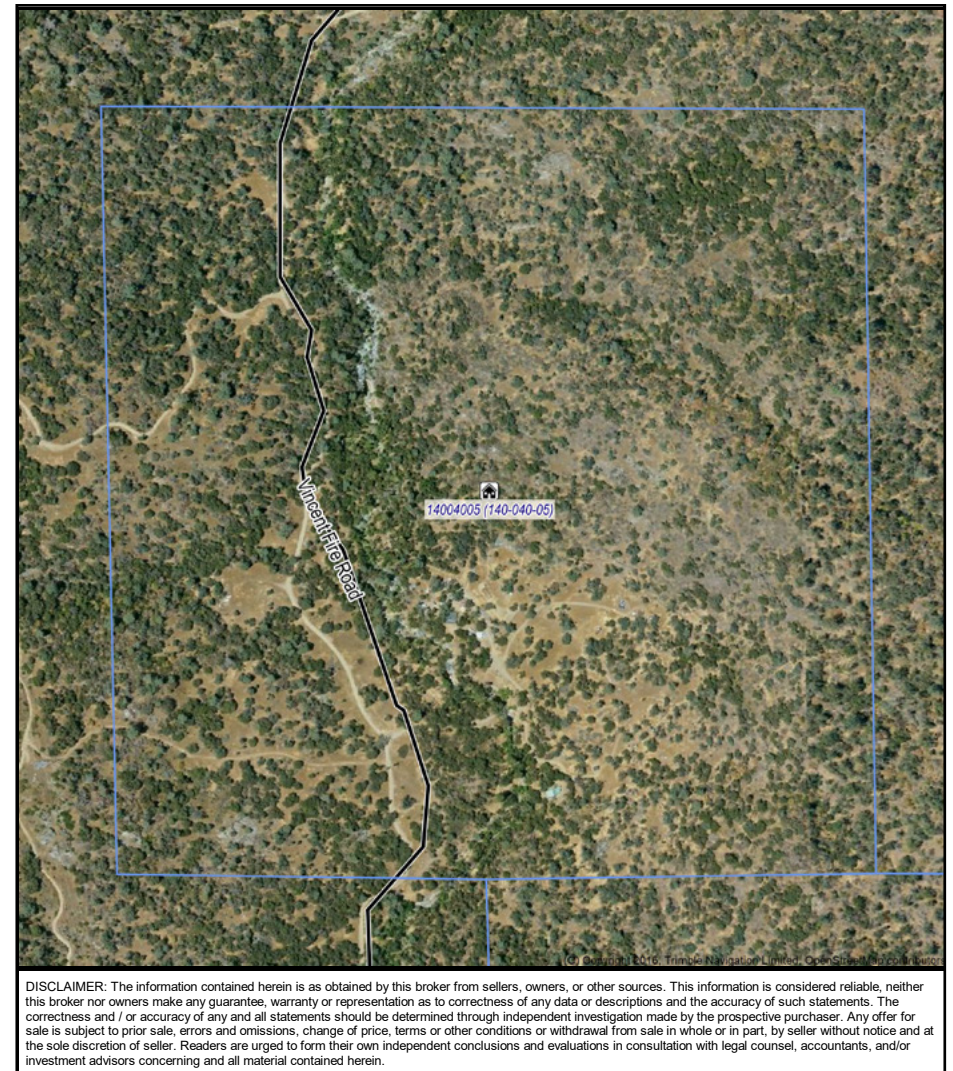


Property Maps ~ Logs Cabins & Land, Fresno County, CA

Topo Map



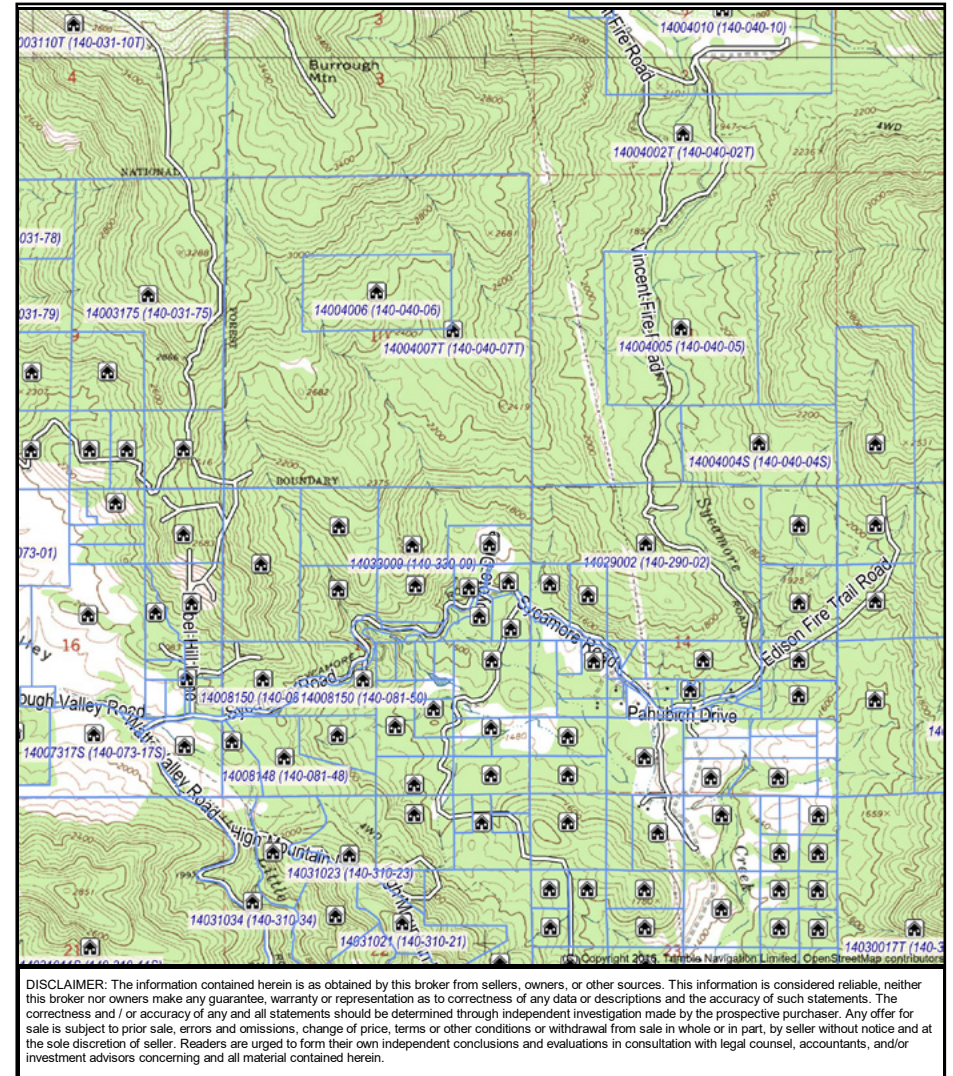
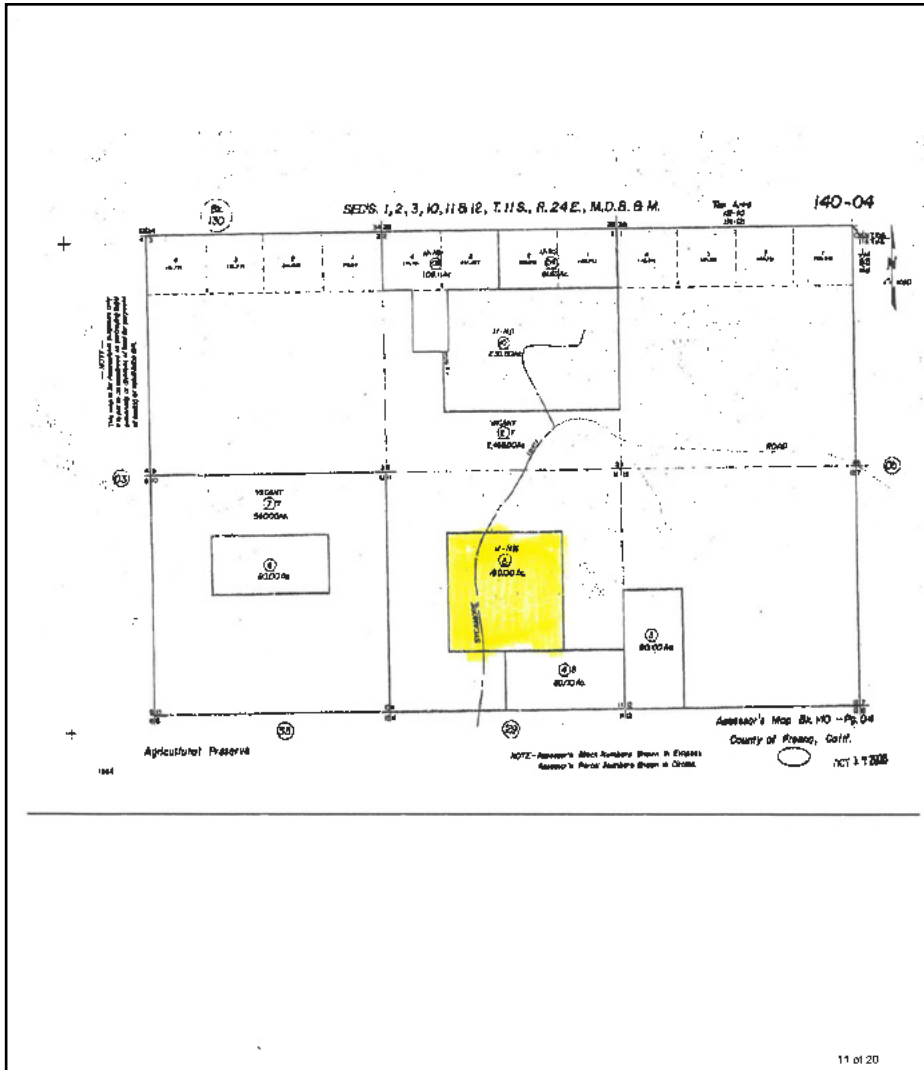
Aerial Map



Property Maps ~ Logs Cabins & Land, Fresno County, CA

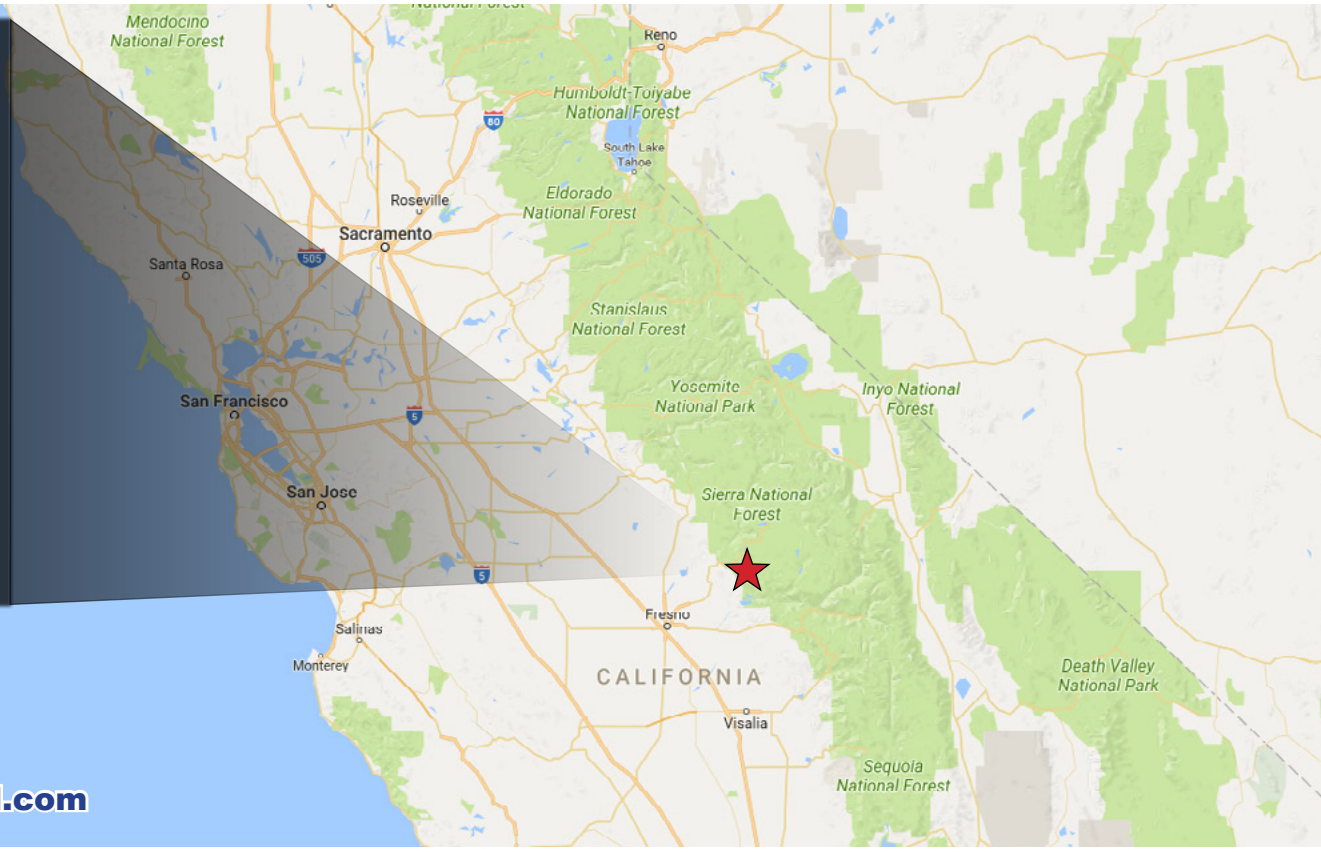
APN: 140-040-05

Street Map



DISCLAIMER: The information contained herein is as obtained by this broker from sellers, owners, or other sources. This information is considered reliable, neither this broker nor owners make any guarantee, warranty or representation as to correctness of any data or descriptions and the accuracy of such statements. The correctness and / or accuracy of any and all statements should be determined through independent investigation made by the prospective purchaser. Any offer for sale is subject to prior sale, errors and omissions, change of price, terms or other conditions or withdrawal from sale in whole or in part, by seller without notice and at the sole discretion of seller. Readers are urged to form their own independent conclusions and evaluations in consultation with legal counsel, accountants, and/or investment advisors concerning and all material contained herein.

Property Summary ~ Logs Cabins & Land, Fresno County, CA



**For Sale: ±160 AC
\$1,050,000**

For Additional information visit www.Land.com

For More Information Contact:



Mike Kuppenbender, ALC, CCIM, SIOR
DRE License #: 00811112
mkupp@tricommercial.com
916.960.5709

TRI Outdoor Properties

532 Gibson Drive, Suite 200, Roseville, CA 95678

LAND BROKERAGE | Recreational · Agricultural · Conservation

A Division of TRI Commercial Real Estate Services, Inc.

The information in this document was obtained from sources we deem reliable; however, no warranty or representation, expressed or implied, is made as to the accuracy of the information contained herein.