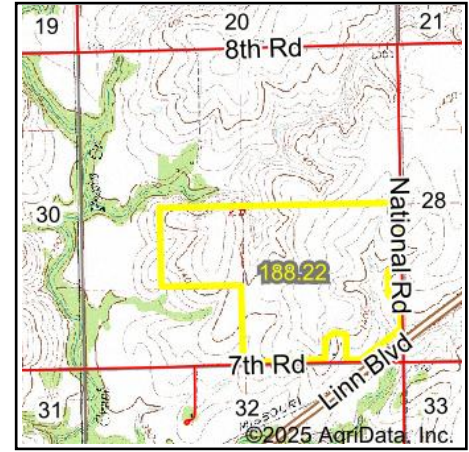
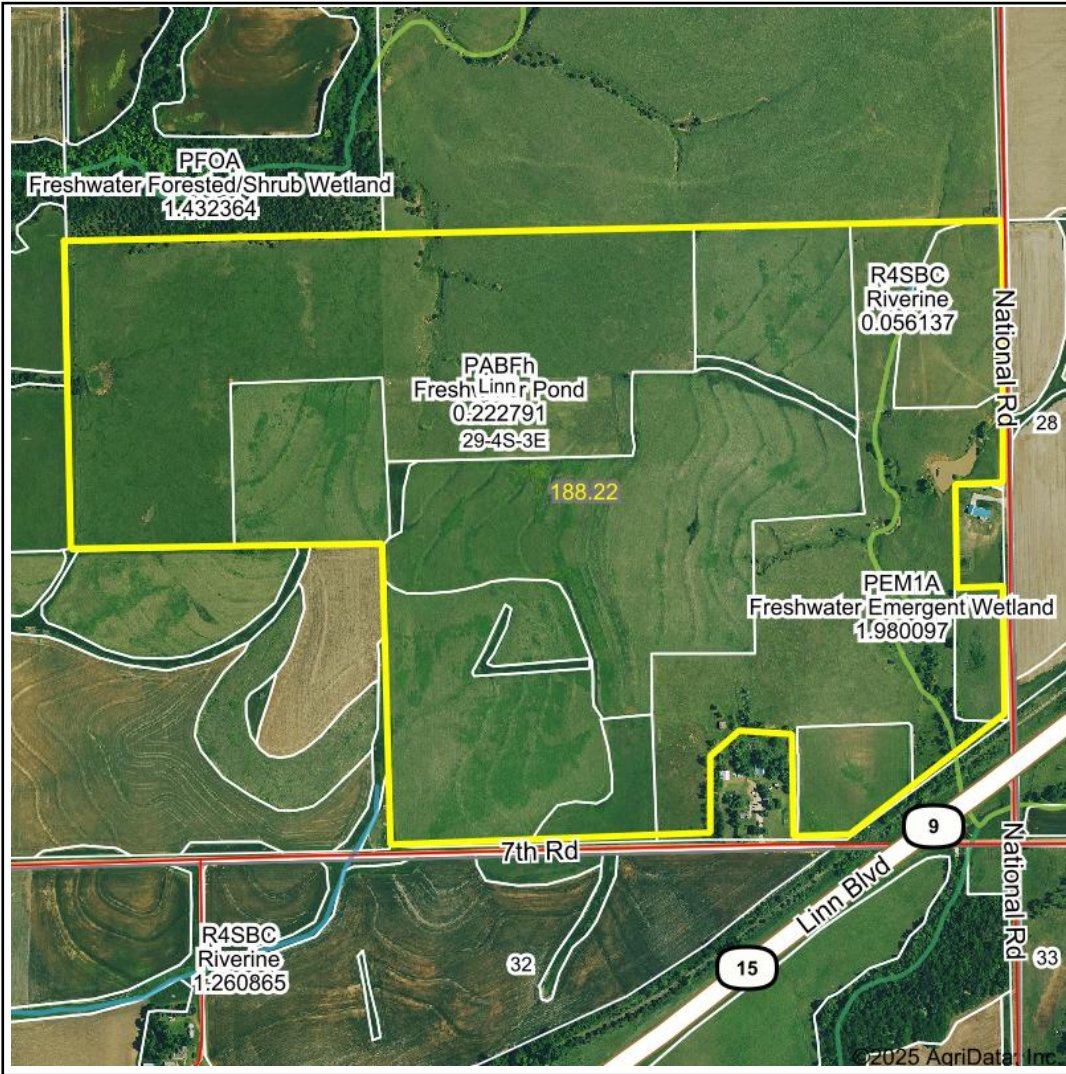


Wetlands Map



State: **Kansas**
 Location: **29-4S-3E**
 County: **Washington**
 Township: **Linn**
 Date: **4/3/2025**



Maps Provided By:



© AgriData, Inc. 2023 www.AgriDataInc.com



0ft 938ft 1876ft

Classification Code	Type	Acres
PEM1A	Freshwater Emergent Wetland	0.97
PABFh	Freshwater Pond	0.22
R4SBC	Riverine	0.06
Total Acres		1.25

Data Source: National Wetlands Inventory website. U.S. DoI, Fish and Wildlife Service, Washington, D.C. <http://www.fws.gov/wetlands/>