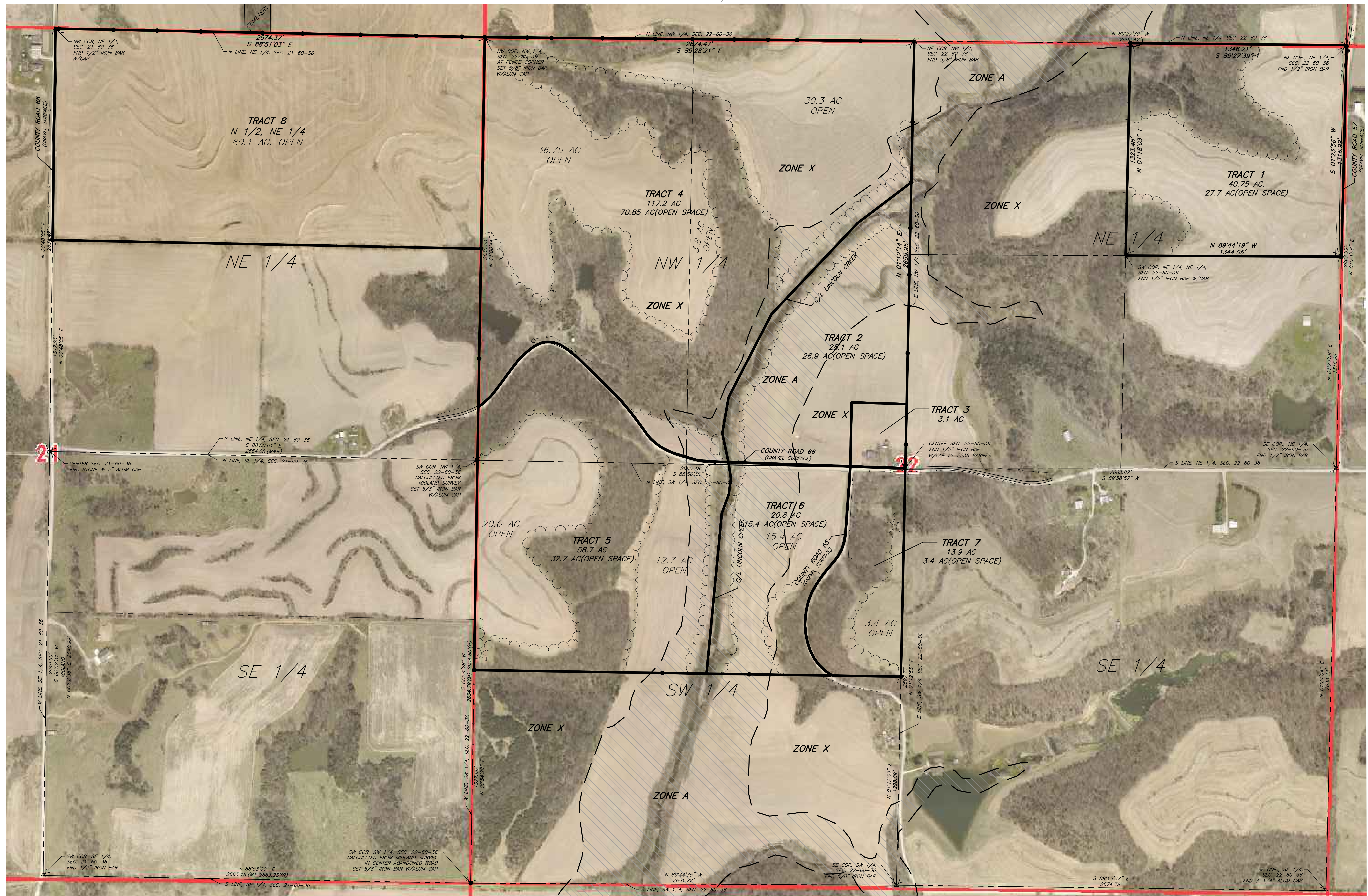
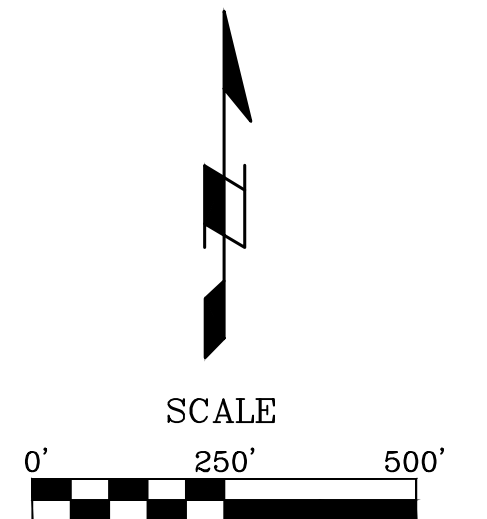


# EXHIBIT SURVEY

NE 1/4, SECTION 21 & SECTION 22, TOWNSHIP 60 NORTH, RANGE 36 WEST  
ANDREW COUNTY, MISSOURI



TRACT AREA		
TRACT NO.	OPEN SPACE	TOTAL ACRES
TRACT 1	27.7 ACRES	40.75 ACRES
TRACT 2	26.9 ACRES	28.1 ACRES
TRACT 3	3.1 ACRES	3.1 ACRES
TRACT 4	70.85 ACRES	117.2 ACRES
TRACT 5	32.7 ACRES	58.7 ACRES
TRACT 6	15.4 ACRES	20.8 ACRES
TRACT 7	3.4 ACRES	13.9 ACRES
TRACT 8	80.1 ACRES	80.1 ACRES



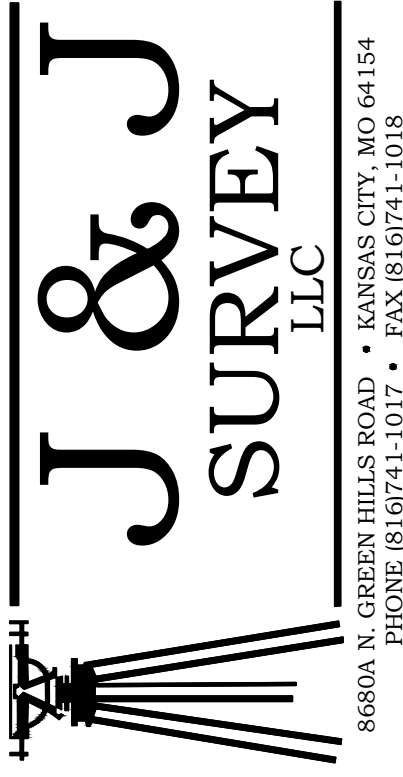
- LEGEND**
- △ - SECTION CORNER AS NOTED
  - - MONUMENT FOUND AS NOTED
  - - SET MONUMENT AS NOTED
  - - FOUND 1/2" IRON BAR AT CORNER UNLESS OTHERWISE NOTED
  - - SET 1/2" IRON BAR AT CORNER W/ J & J CAP
  - (M) - MEASURED DISTANCE
  - (R) - RECORD DISTANCE
  - - - - - WIRE FENCE

**CLIENT:**  
Eric Craig Real Estate Team  
Eric Craig  
email: ericscraig@gmail.com

**PROPERTY LOCATION:**  
6471 County Road 66  
Andrew County, Missouri

**GENERAL SURVEY NOTE:**  
1.) Tree lines and open acreages shown and calculated by aerial imagery. Accuracy is not certified.

3-26-25  
Date  
John B. Young PLS-2006016647

  
**J & J**  
**SURVEY**  
 LLC

8680A N. GREEN HILLS ROAD • KANSAS CITY, MO 64154  
PHONE: (816) 941-1107 • FAX: (816) 941-1016

Location: S:\25-008 - 360 acres on County Rd 66\25-008B - Marketing Exhibit\DRAWINGS\2025-03-17 - EXH\25-008-EXH.dwg-Mar 26, 2025-11:06am

INITIAL SUBMITAL	DATE	DESCRIPTION
1	02-28-25	AREA CORRECTIONS
2	03-07-25	MARKETING EXHIBIT
3	03-26-25	