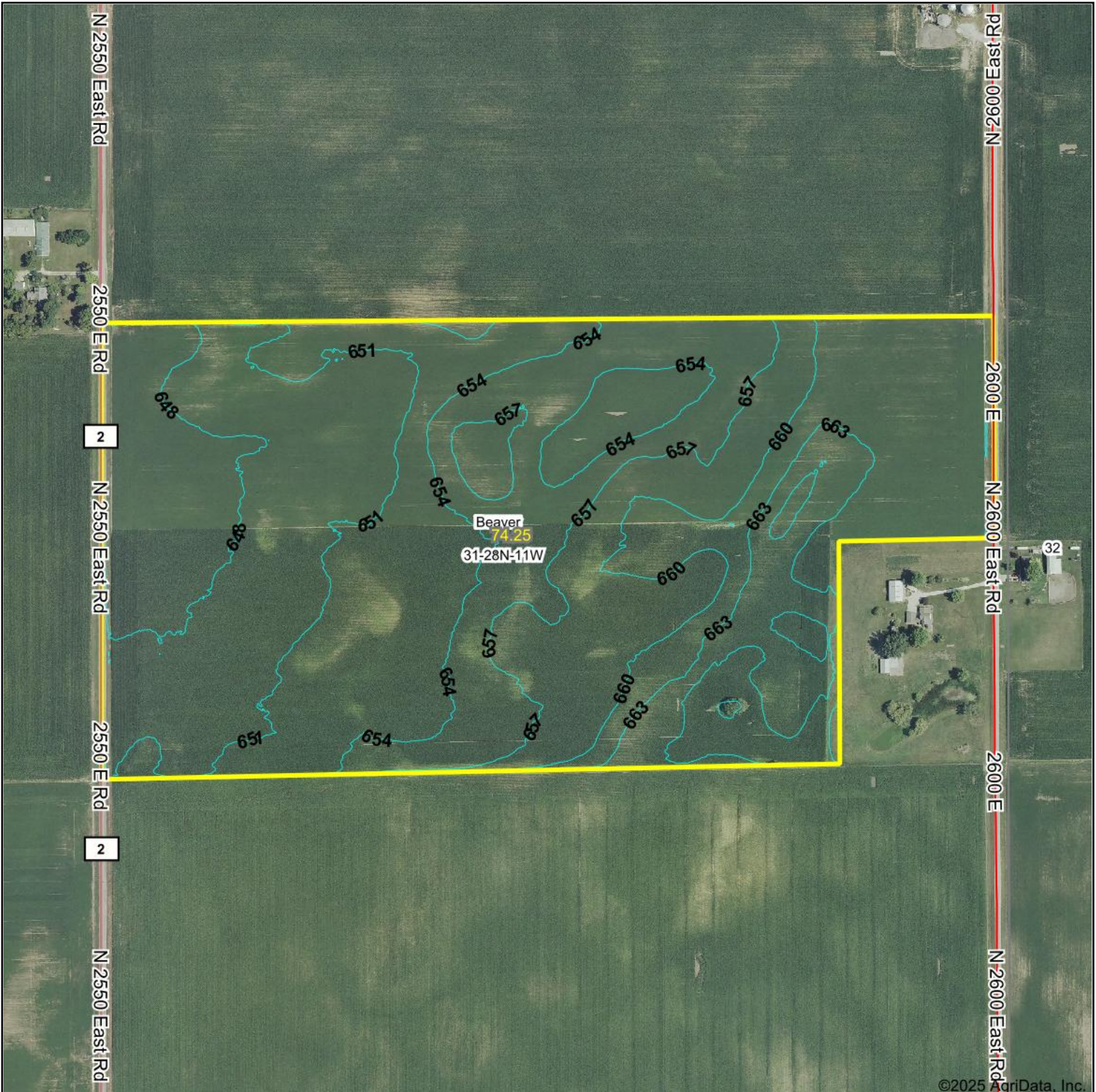


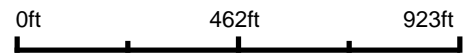
Topography Contours



©2025 AgriData, Inc.



Source: USGS 1 meter dem
 Interval(ft): 3.0
 Min: 645.5
 Max: 666.9
 Range: 21.4
 Average: 655.2
 Standard Deviation: 5.31 ft



10/1/2025

31-28N-11W
Iroquois County
Illinois

Boundary Center: 40° 52' 17.98, -87° 38' 26.18

