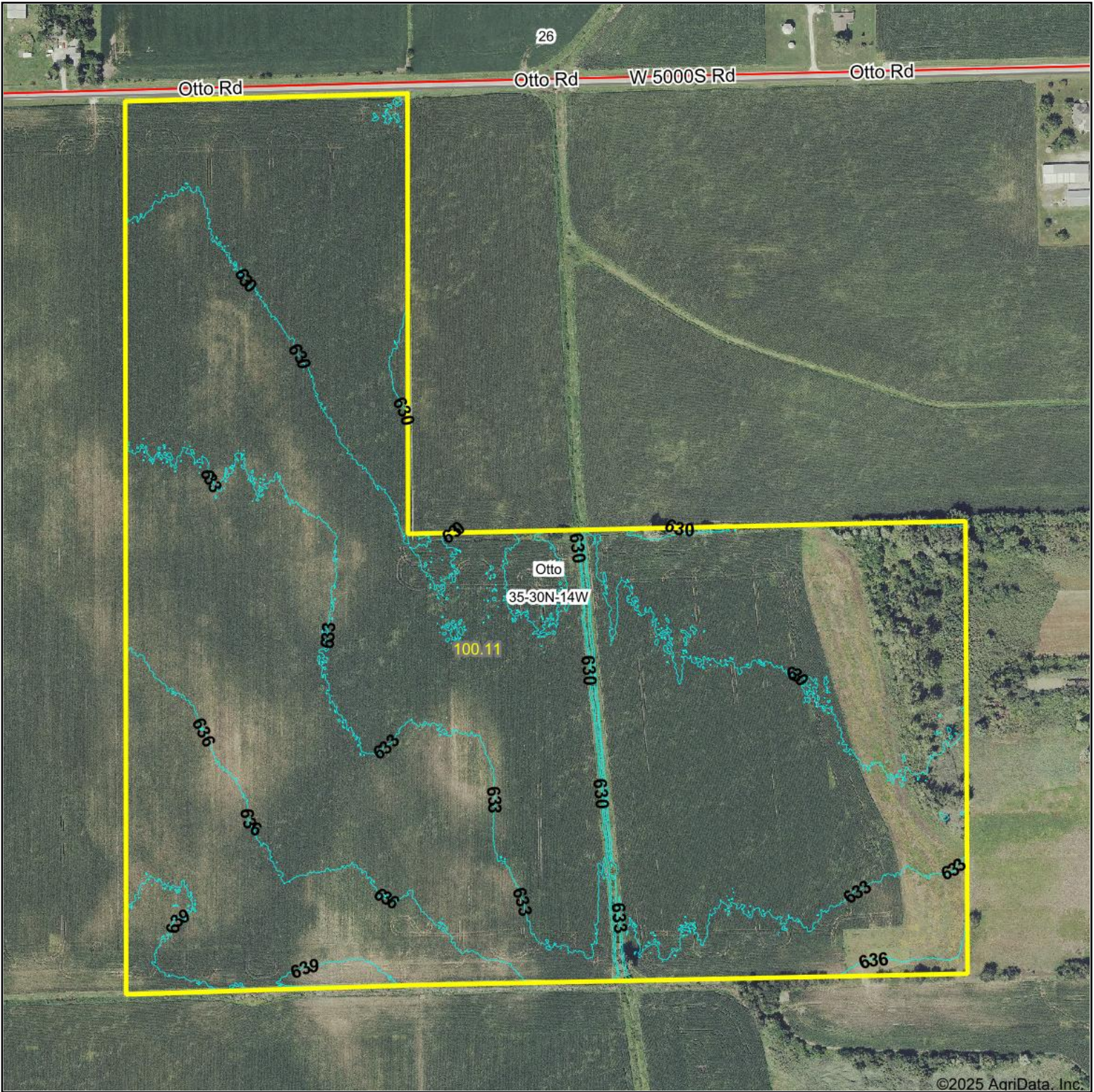


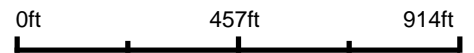
Topography Contours



©2025 AgriData, Inc.



Source: USGS 1 meter dem
 Interval(ft): 3.0
 Min: 624.8
 Max: 641.5
 Range: 16.7
 Average: 632.2
 Standard Deviation: 2.85 ft



10/1/2025

35-30N-14W
Kankakee County
Illinois

Boundary Center: 41° 2' 34.81, -87° 54' 51.32