



**AMERICAN
LEGACY
LAND CO**

FOR SALE

MOUNTAIN VIEWS

Glenwood, AR

118 +/- Acres

OFFERED AT:

\$500,000

ABOUT THIS PROPERTY:

Welcome to Skyline Ridge Tract, one-of-a-kind 118 +/- acres of mountain country where you will want to stop and take it all in. It has natural and scenic views that go on for miles. These views stretch for miles in every direction, and the property captures everything people dream of when they think of owning their own piece of the mountain. Whether you're searching for a private family retreat, a cabin community development, or a long-term investment in land that truly stands apart, Skyline Ridge offers it all — elevation, access, and unmatched scenery. Imagine yourself sitting on the back porch watching the sunrise over the ridgeline, then slide your chair over a few feet that evening to watch it settle behind the hills.



More About this Property:

The property features a mix of mature hardwoods, pine, and open ridgelines, all tied together by a thought out road system that winds through the heart of the tract. Several ideal building sites sit along the ridge, each offering breathtaking views and the quiet seclusion you only find in the high country. With utilities on site, a clean interior layout, and enough space to build multiple structures or subdivide, this property is ready to bring your vision to life — whether that's a mountaintop lodge, individual cabins, or your forever home.

If you've been searching for a place to slow down, breathe in the mountain air, and create something lasting, this is it. A place where every ridge tells a story, and the kind of seclusion you can't just find anywhere.

Gather your family, bring your friends, and claim your place among the ridgelines of Skyline Ridge.

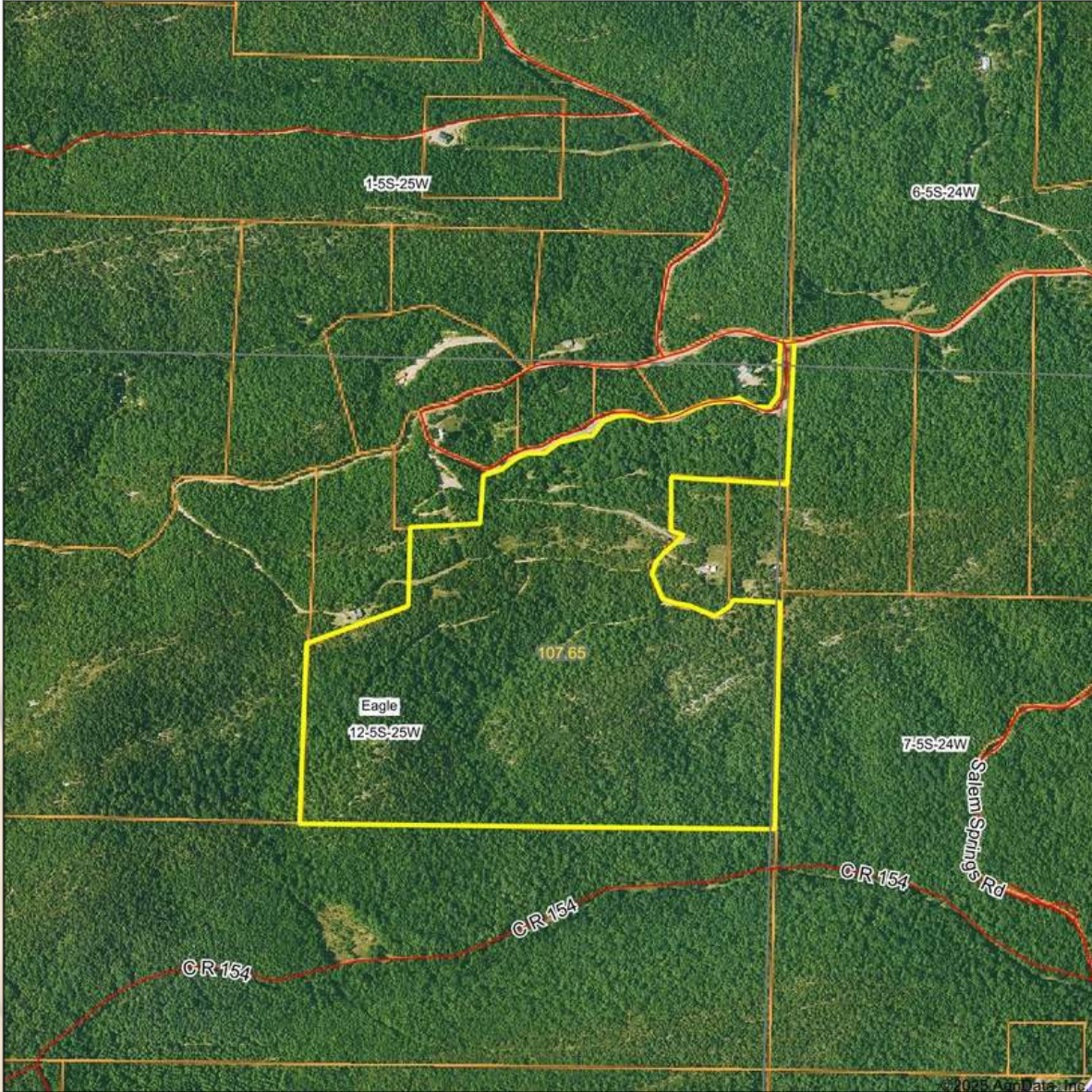
Legal Description: 01-05S-12W; 12-05S-25W Pike County, AR

Income Potential: Retreat center, cabin rentals, home retreat, recreational

FEATURES:

- 118 +/- acres
- Elevated mountain views
- Electric installed
- County road access
- Well laid interior road system
- Multiple cabin or lodge sites
- Minutes from Glenwood, Arkansas
- Excellent wildlife habitat

Aerial Map



Boundary Center: 34° 19' 32.23, -93° 37' 26.76



**12-5S-25W
Pike County
Arkansas**



Maps Provided By:

CUSTOMIZED ONLINE MAPPING
© AgriData, Inc. 2023 www.AgriDataInc.com

7/28/2025

Field borders provided by Farm Service Agency as of 5/21/2008.



AMERICAN LEGACY LAND CO





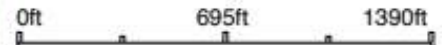
Wetlands Map



State: **Arkansas**
 Location: **12-5S-25W**
 County: **Pike**
 Township: **Eagle**
 Date: **7/28/2025**

Maps Provided By:

CUSTOMIZED ONLINE MAPPING
 © AgriData, Inc. 2023 www.AgriDataInc.com



Classification Code	Type	Acres
Total Acres		0.00

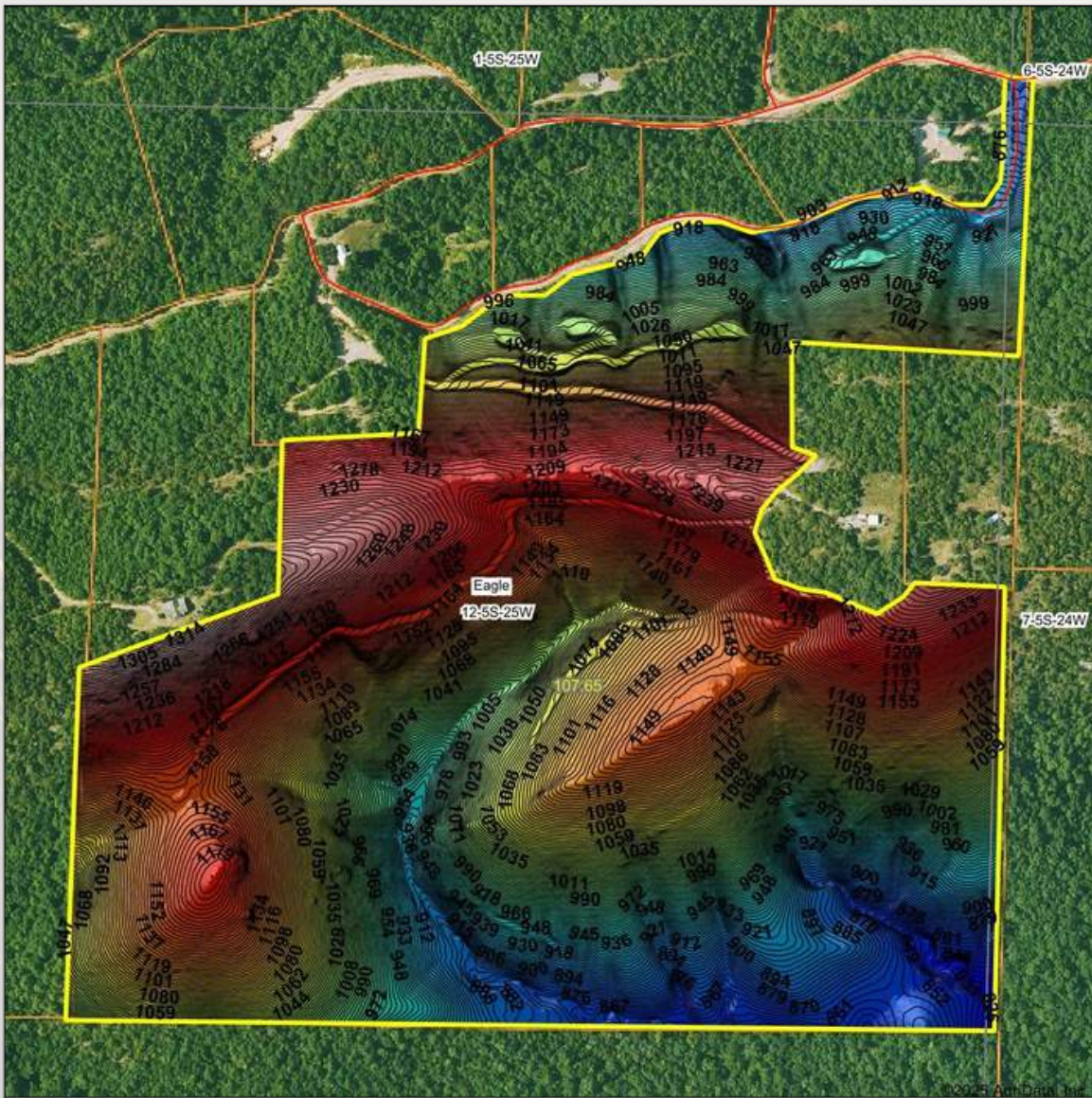
Data Source: National Wetlands Inventory website. U.S. DoI, Fish and Wildlife Service, Washington, D.C. <http://www.fws.gov/wetlands/>



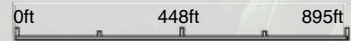
FARM • RANCH • RECREATION
HUNTING • DEVELOPMENT



Topography Hillshade



Source: USGS 1 meter dem
 Interval(ft): 3
 Min: 822.8
 Max: 1,320.9
 Range: 498.1
 Average: 1,068.6
 Standard Deviation: 113.19 ft



7/28/2025

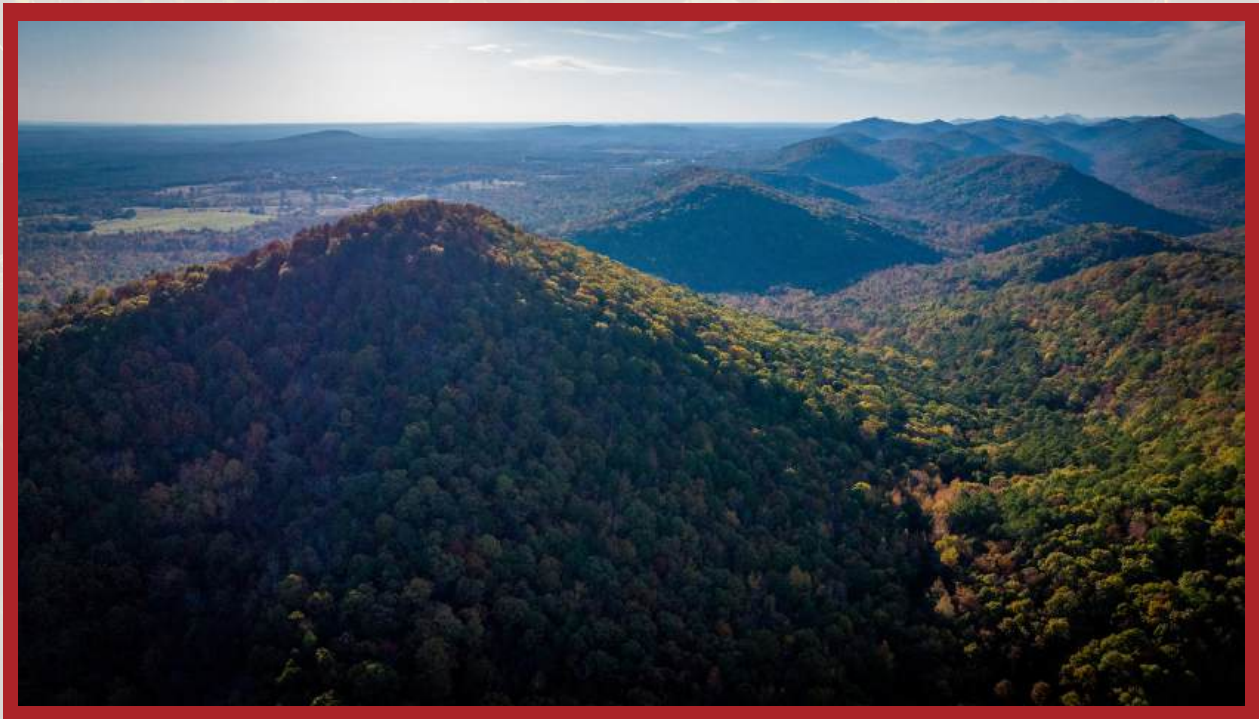
12-5S-25W
Pike County
Arkansas

Boundary Center: 34° 19' 32.23, -93° 37' 26.76



© AgriData, Inc. 2023 www.AgridataInc.com
 Field borders provided by Farm Service Agency as of 5/21/2008.





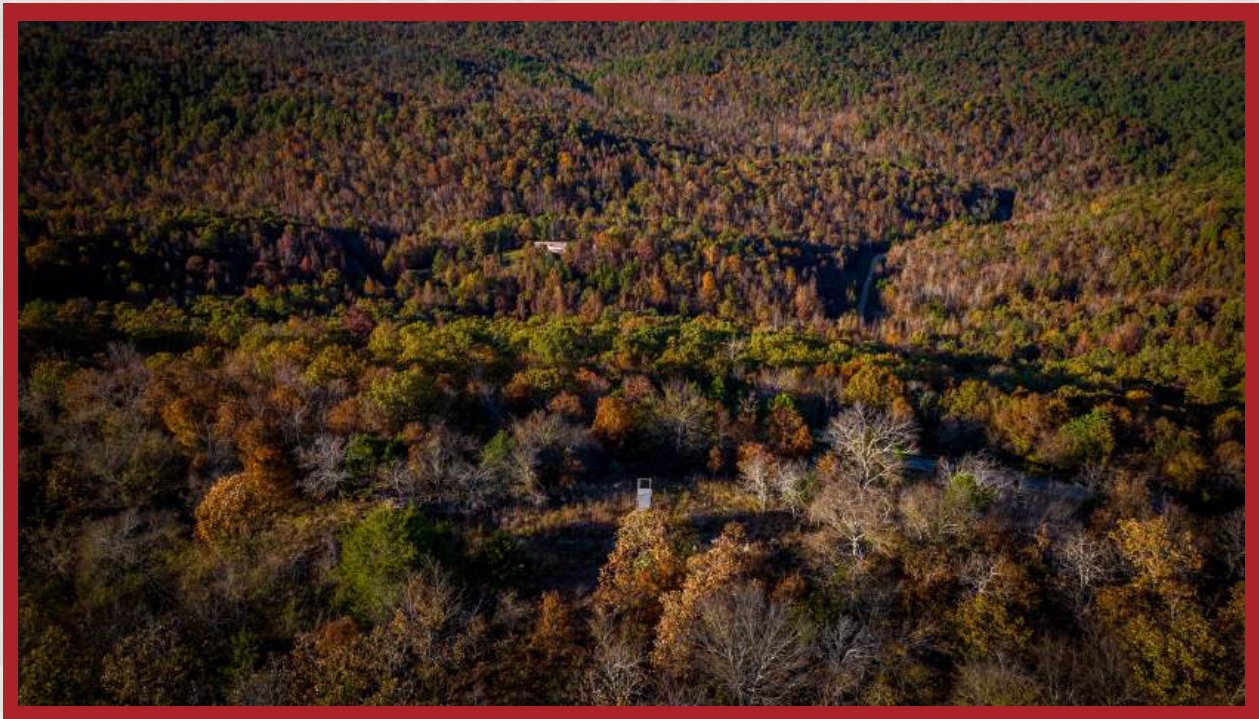
AMERICAN
LEGACY
LAND CO

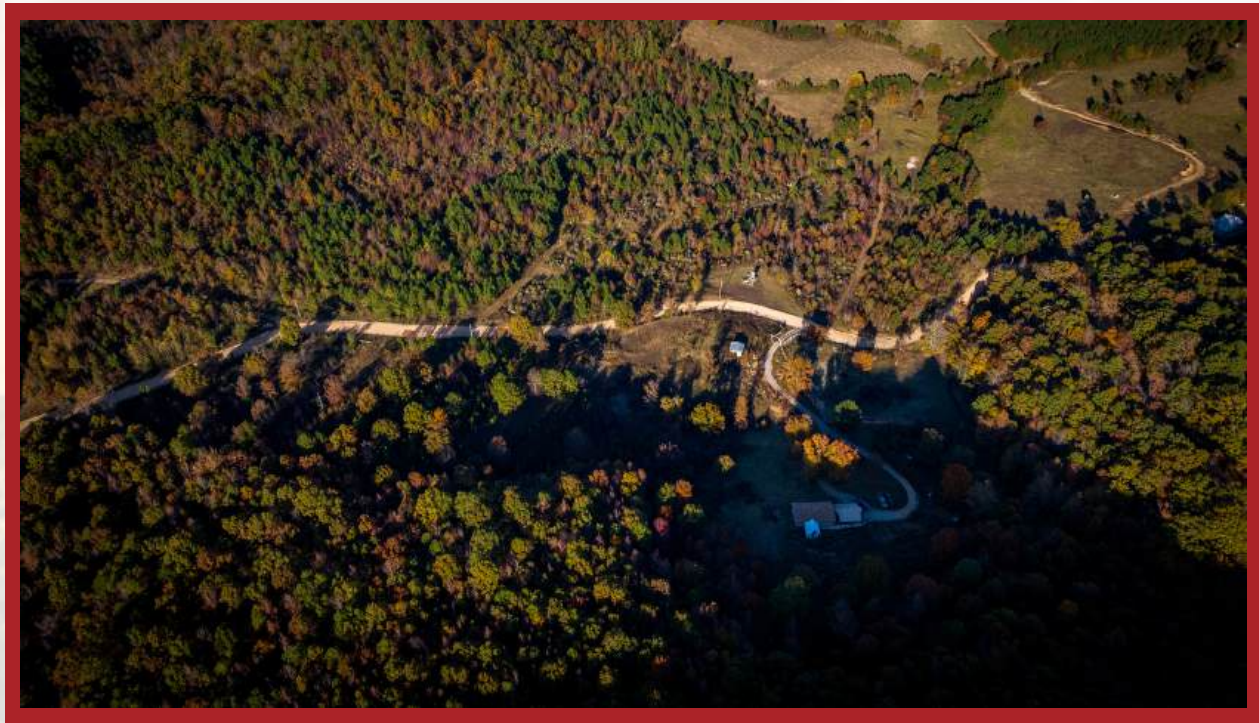
COMMITTED • DETERMINED
TRUSTED



AMERICAN LEGACY

LAND CO



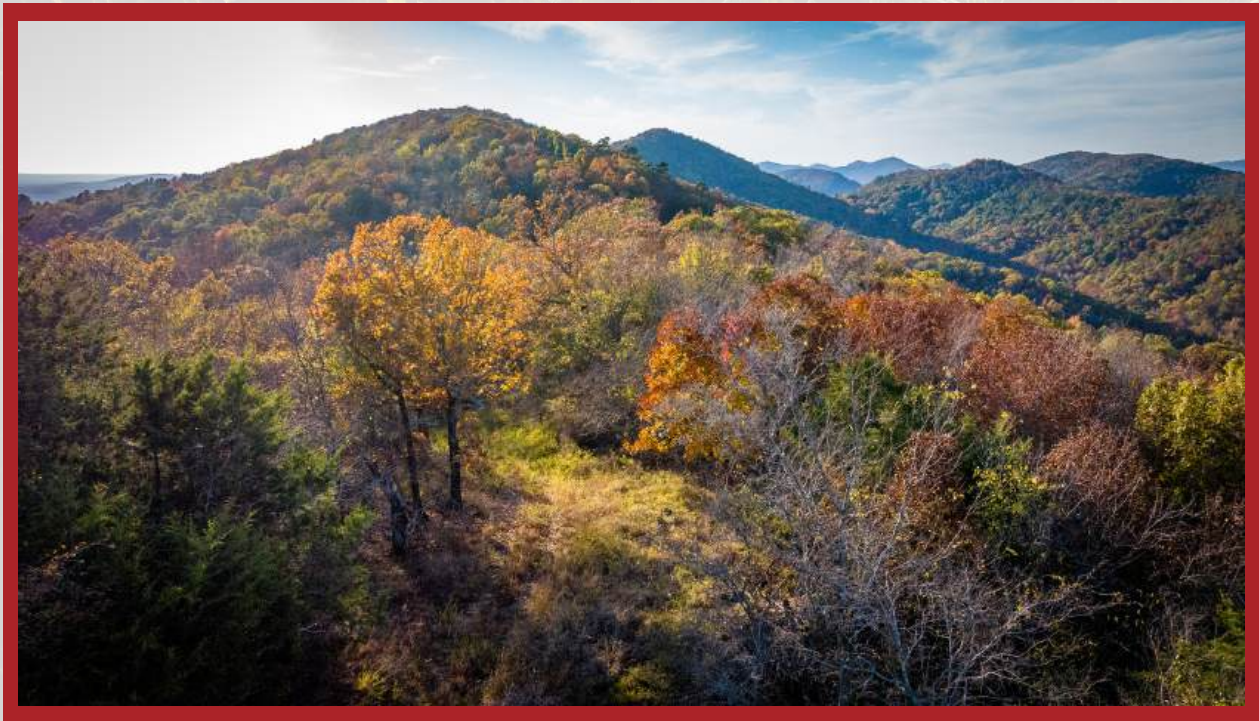


**AMERICAN
LEGACY**
LAND CO

HELPING YOU BUY
AND SELL LAND



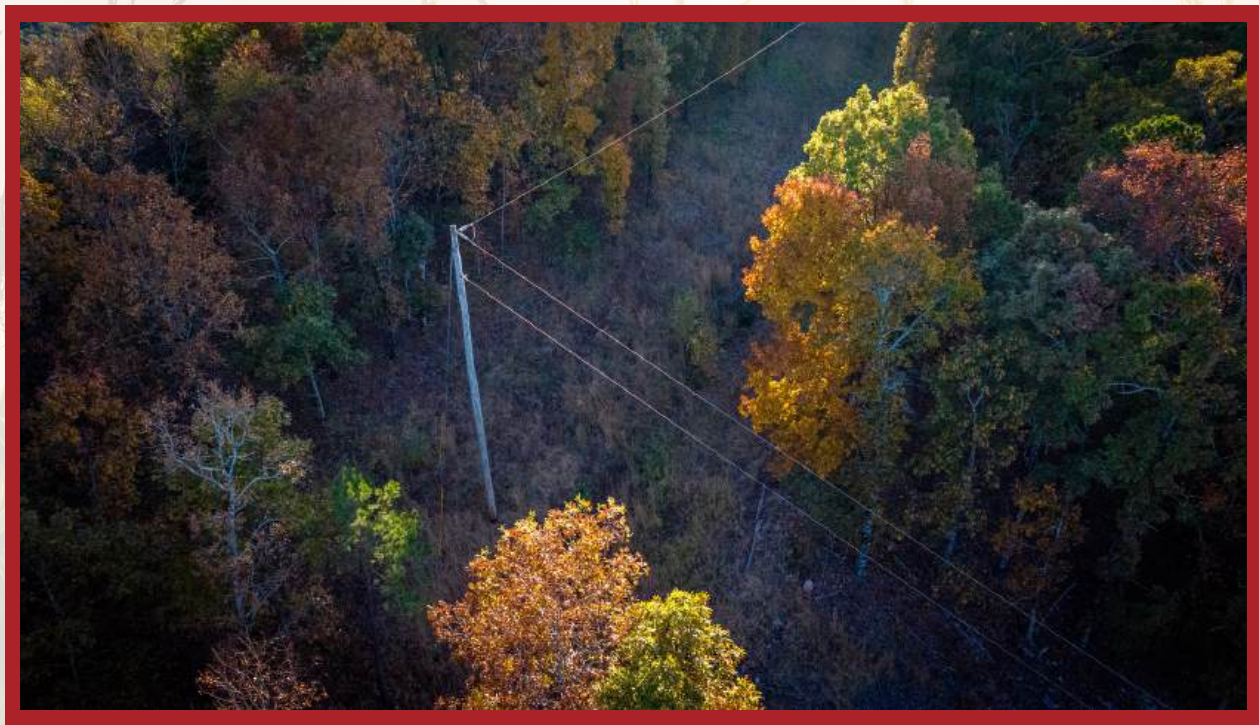
AMERICAN LEGACY LAND CO



**AMERICAN
LEGACY
LAND CO**

**BUYING • SELLING
AUCTIONS**





AMERICAN
LEGACY
LAND CO

FARM • RANCH • RECREATION
HUNTING • DEVELOPMENT



About the Agent:

Growing up on a dairy farm, Jeff developed a deep-rooted connection to the land and a profound respect for those who work it. His passion for helping others unlock the potential in their property comes from years of working alongside farmers in the Delta and personally understanding the value of hard work and stewardship. Jeff's hands-on experience extends beyond row crops to encompass wildlife management, hunting leases, and habitat enhancement—ensuring landowners can maximize every acre.

As a licensed land specialist broker at American Legacy Land Company with a background in both Arkansas and Missouri, Jeff is committed to helping families and farmers alike make the most of their land. Whether it's a lifelong farm, a new home site, or a hunting property, Jeff strives to match people with land where memories can be built, dreams can take root, and investments can grow.

For Jeff, land isn't just an asset—it's an opportunity to cultivate something lasting. Whether you're looking to sell your land for top dollar or establish a forever home where generations can thrive, Jeff offers personalized guidance every step of the way, rooted in a deep understanding of land and the families who love it.

JEFF WATSON, PRINCIPAL BROKER



870-224-1144



Jeff@AmericanLegacyLandCo.com

