

# Big Cypress Mitigation Bank

22305 Shoults Gr, Immokalee, Florida 34142

---

Nick Dabbelt  
937-903-1489  
nick@saundersrealestate.com

Zane Mueller  
352-303-9322  
zane@saundersrealestate.com

## PROPERTY OVERVIEW



### Sale Price

\$5,392,500

### Offering Summary

Acreage:	2,157 Acres
Price / Acre:	\$2,500
State:	Florida
City:	Immokalee
County:	Hendry
Property Type:	Conservation Easements Hunting and Recreational Land

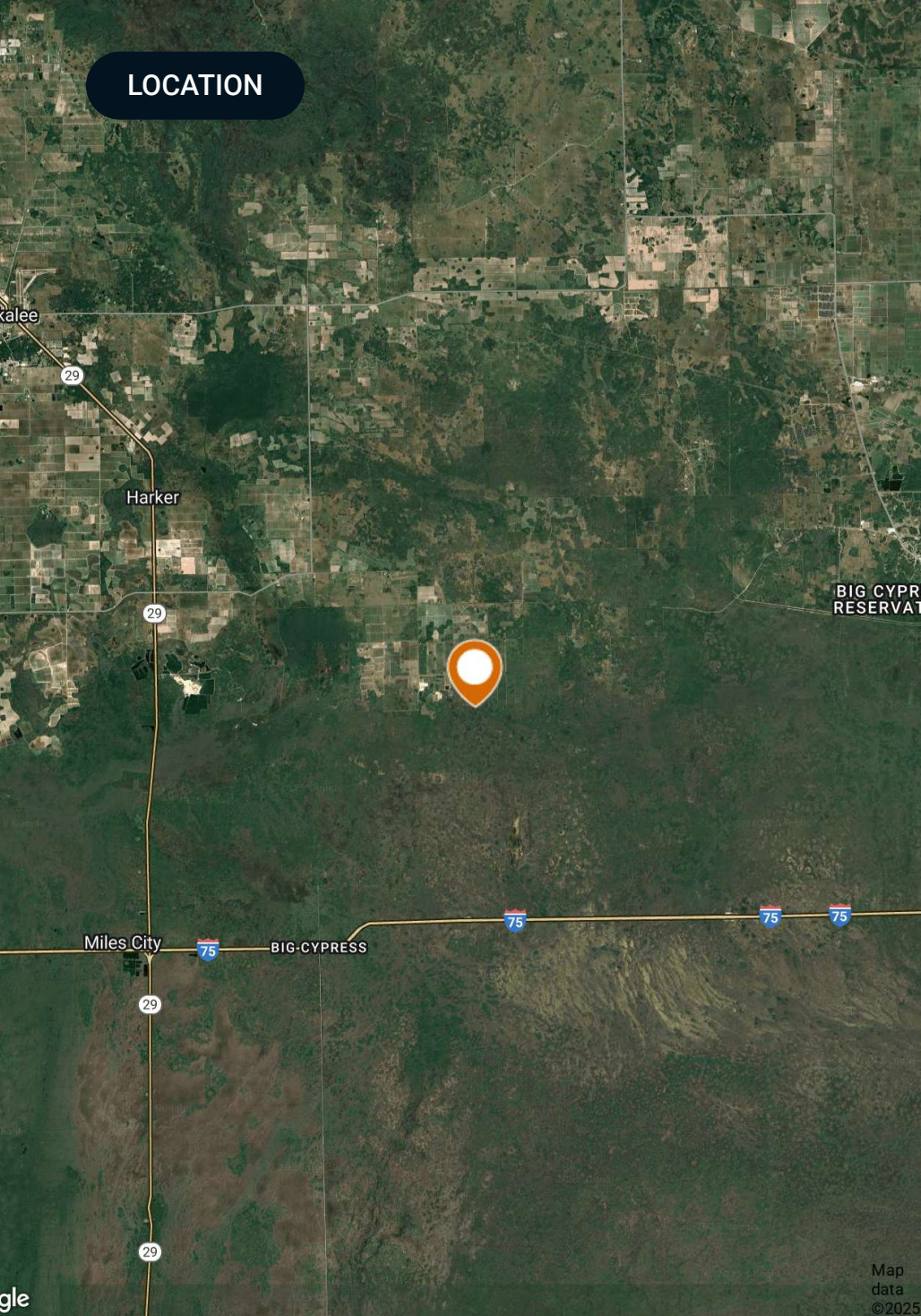
### Property Overview

Big Cypress Mitigation Bank encompasses 2,157± acres of recreational and protected conservation land in the heart of Southwest Florida's Big Cypress Basin, a region known for its exceptional ecological significance. The property is safeguarded in perpetuity by a recorded conservation easement held by the South Florida Water Management District, ensuring the long-term preservation of its wetlands, wildlife habitat, and natural hydrologic systems.

Currently operated as an approved mitigation bank, the property has undergone extensive professional restoration and ongoing ecological management. Today, it provides high-quality habitat that supports regional conservation priorities and contributes meaningfully to the ecological health of the Big Cypress landscape. The perfect escape for hunters and wildlife enthusiasts, this property is home to multiple species, including turkeys, alligators, deer, coyotes, feral hogs, black bears, bobcats, and panthers.



## LOCATION



## Location & Driving Directions

**Parcel:** 1 31 48 35 A00 0001.0000; 1 31 48 26 A00 0001.0000; 1 32 48 30 A00 0001.0000; 1 32 48 31 A00 0001.0000

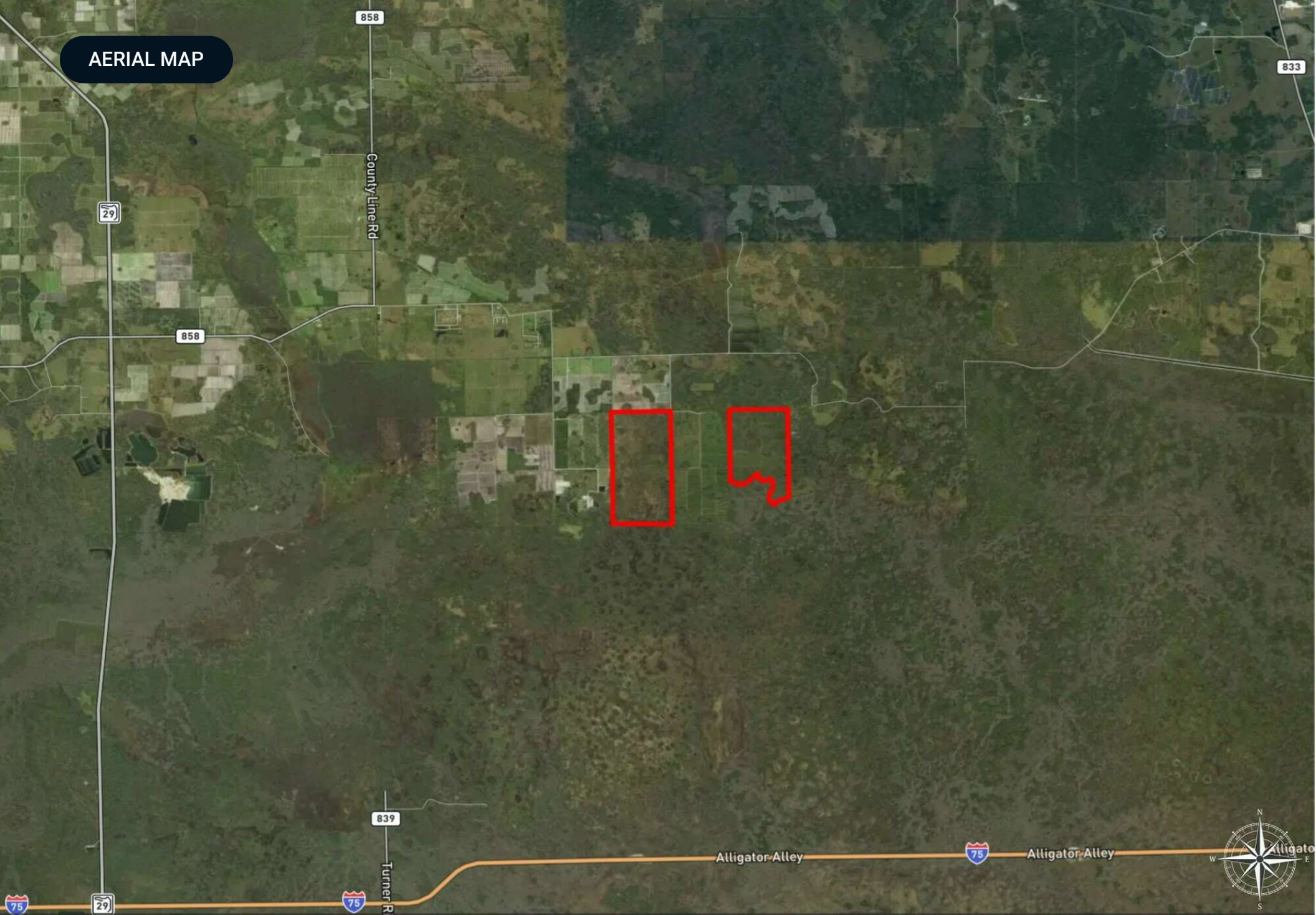
**GPS:** 26.269671332, -81.1946135118

**Driving Directions:** Contact Nick Dabbelt

**Showing Instructions:** Contact Nick Dabbelt

Map  
data  
©2025

AERIAL MAP





ADDITIONAL PHOTOS







WILDLIFE





**SAUNDERS**  
REAL ESTATE



**SAUNDERS**  
LAND



**SAUNDERS**  
COMMERCIAL

## Serving the Southeast

At Saunders Real Estate, we deliver full-service real estate solutions across the Southeast, built on more than 30 years of trusted experience. Our dedicated teams—experts in both land and commercial real estate—offer tailored guidance backed by deep regional insight and a proven track record. We believe that successful outcomes start with strong relationships built on trust and a shared commitment to your goals.



**877-518-5263 • [info@saundersrealestate.com](mailto:info@saundersrealestate.com)**