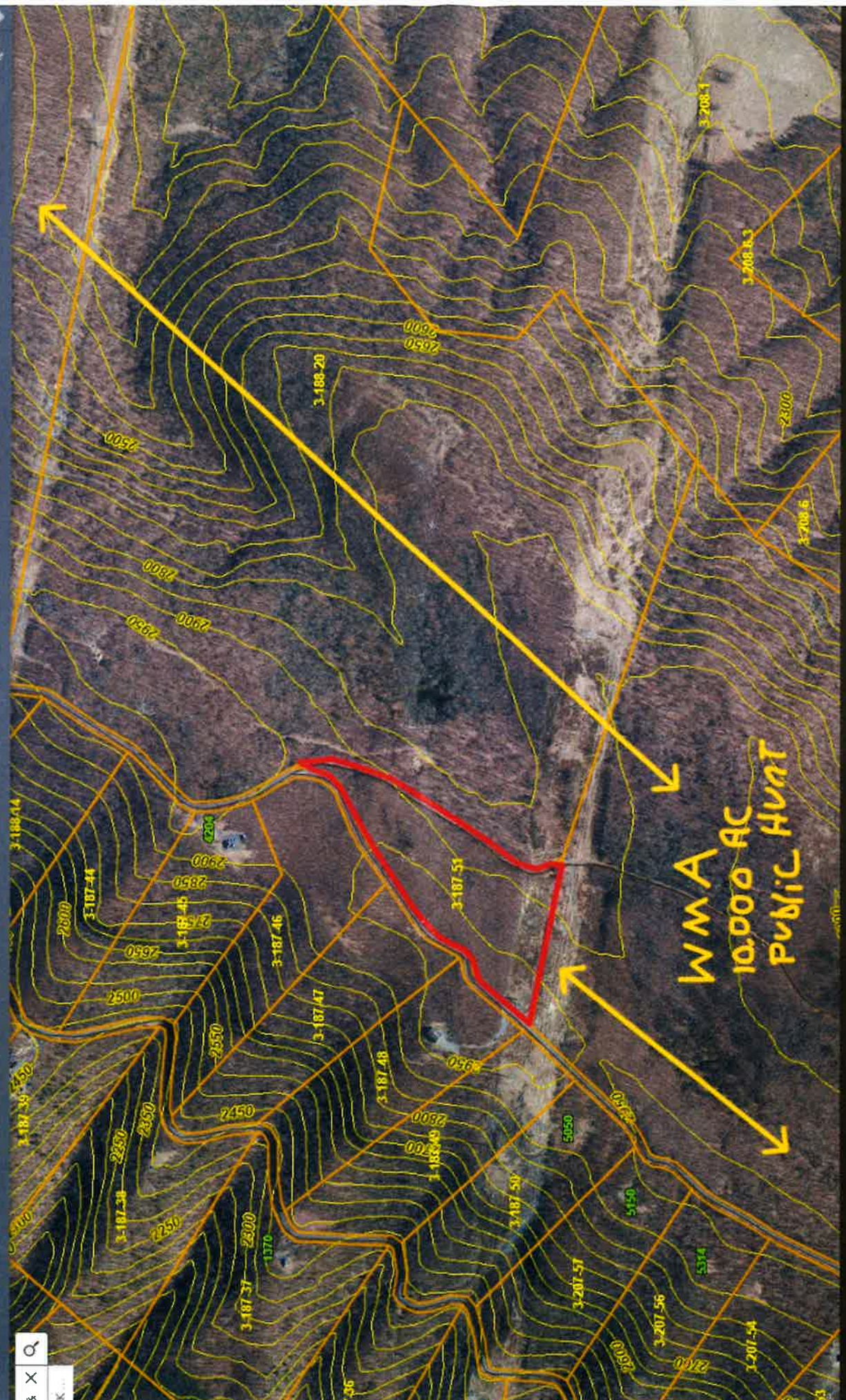
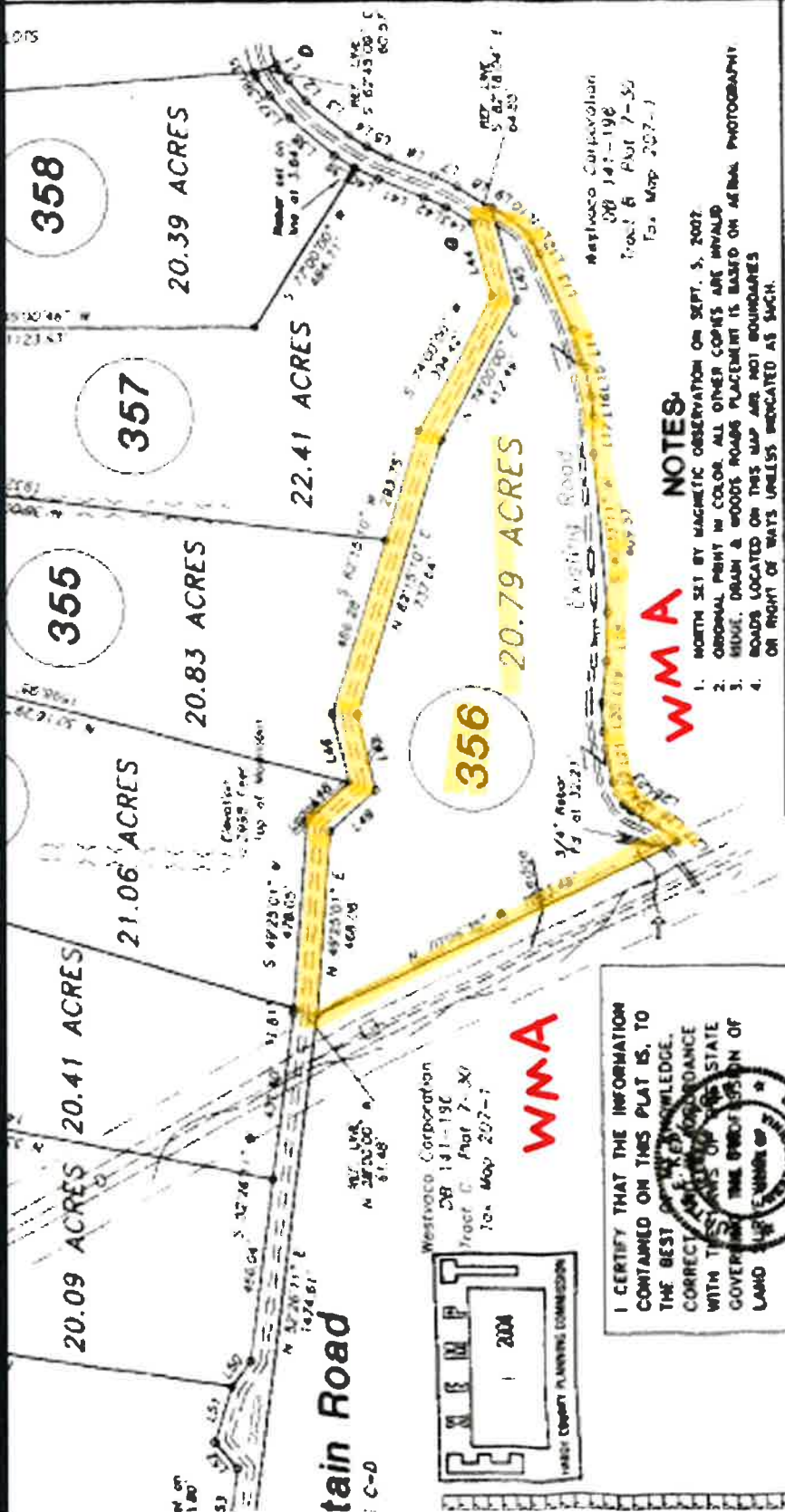


NATHANIEL MTN
WMP
10,000 ACRES

Pond





Westvaco Corporation
 SB 141-196
 Tract 6 Plat 7-55
 Tax Map 207-1

WMA

I CERTIFY THAT THE INFORMATION CONTAINED ON THIS PLAT IS, TO THE BEST OF MY KNOWLEDGE, CORRECT AND IN ACCORDANCE WITH THE REQUIREMENTS OF THE STATE GOVERNMENT. THE OFFICE OF LAND SURVEYING AND MAPPING



Curtis E. Heplerger
 CURTIS E. HEPLERGER, P.S. NO. 518
 FOR L & W ENTERPRISES, INC.

LEGEND

- PROPERTY LINE ORIGINAL BOUNDARY
- PROPERTY LINE DIVISIONS
- SUBDIVISION ROAD
- PROPERTY LINE ROAD RIGHT-OF-WAY
- REFERENCE LINE
- ADJOINER PROPERTY LINE
- WITH
- DRAIN
- APPROXIMATE RIDGE LINES
- TRAIL
- POWER LINE R/W
- CAPPED 5/8" x 50" REBAR SET AS CORNER OR REFERENCE TO CORNER
- POINT OR CORNER NOT SET
- 3/4" REBAR FOUND AS CORNER
- FOUND STONE ON STONE PILE

WMA NOTES:

1. NORTH SET BY MAGNETIC OBSERVATION ON SEPT. 5, 2002.
2. ORIGINAL POINT IN COLOR. ALL OTHER COPIES ARE INVAID.
3. HIGHLIGHT, DRAIN & WOODS ROADS PLACEMENT IS BASED ON AERIAL PHOTOGRAPHY.
4. ROADS LOCATED ON THIS MAP ARE NOT BOUNDARIES OR RIGHT OF WAYS UNLESS INDICATED AS SUCH.

**PLAT OF SURVEY FOR
 WV HUNTER, LLC**

1800 West King Street
 Martinsburg, WV 25401
 304-262-2770

8.5 Miles Northeast of Moorefield, WV
 Moorefield Dist., Hardy County, West Virginia

Being part of the land from Westvaco Corp. to WV Hunter LLC
 With Reference to Deed Book 270 Page 329, October 16, 2002
 877.94 Total Acres - Part of Tax Map 207-1
 846.00 Acres in Lots & 31.94 Acres in Road R/W

Date: June 16, 2004
 Surveyed May 2004 By
 L & W Enterprises, Inc.
 Drawn By: CEK